



WWW.CABLEJOINTS.CO.UK
THORNE & DERRICK UK
TEL 0044 191 490 1547 FAX 0044 477 5371
TEL 0044 117 977 4647 FAX 0044 977 5582
WWW.THORNEANDDERRICK.CO.UK

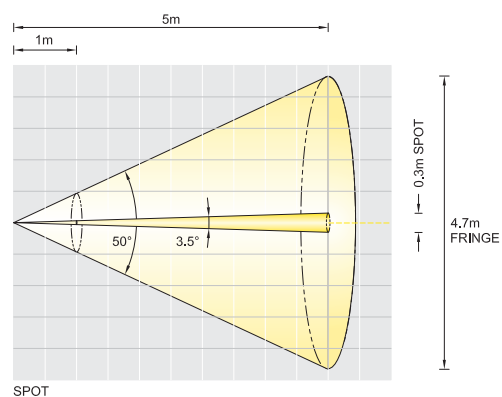
WOLFLITE XT RECHARGEABLE LED HANDLAMP



- ATEX and IECEx certified for use in Zone 1 hazardous areas
- Ultra bright high power LED light
- Spot and flood switchable beam options
- Up to 9 hours duration on full power, 18 hours in powersave mode
- IP66 dust tight and water resistant
- Integral stand for hands free beam direction
- Quick charge, from 2 hours
- Emergency illumination power fail mode
- Zone 0 version available

XT-50, XT-70, XT-90

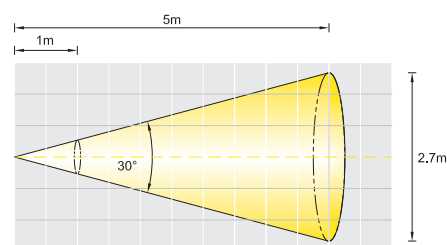
Spot Beam (approx 3.5°), with a low power Fringe beam (approx 50°),
Peak luminous intensity, high power at 1m **13130 lux**, at 5m **620 lux**
Peak luminous intensity, 'powersave' at 1m **8050 lux**, at 5m **370 lux**



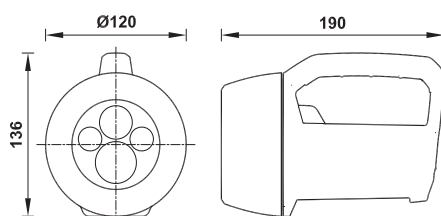
SPOT

XT-70, XT-90

Flood Beam (approx 30°)
Peak luminous intensity, high power at 1m **260 lux**, at 5m **14 lux**
Peak luminous intensity, 'powersave' at 1m **150 lux**, at 5m **9 lux**



FLOOD



The highly innovative ATEX approved Wolfliite XT rechargeable Handlamp exploits advanced technology to deliver excellent performance, robustness, reliability and versatility in the harshest environments. Available in a range of models, the Wolfliite XT range offers differing functional and duration options for many applications.

The Wolfliite XT Handlamp is CE marked to the ATEX Directive and IECEx Certified, for safe use in Zone 1 potentially explosive gas atmospheres, where a T4 temperature class permits. A Zone 0 version is also available.

Bespoke optics coupled with the highest performance LED light sources deliver an outstanding light output from the high intensity spot beam, switchable to a wide-angle flood on performance models. The XT-90 performance+ has additional signal LEDs with colours and function to suit numerous applications where indication is critical. The Wolfliite XT is configured for easy single handed

switching, even with gloved hands, allowing straightforward function selection.

Battery duration varies with model, from 3 hours of high output light on the XT-50 standard model, to 9 hours on the XT-90; selecting powersave doubles this duration. State of battery charge is indicated with a bar of high intensity red LEDs, which go out as battery charge diminishes. Towards the end of discharge, the beam flashes off repeatedly, warning recharging is required. Use of the latest lithium-ion battery technology improves reliability and eliminates 'memory' affect.

The Wolfliite XT is the most compact and lightweight high performance ATEX Handlamp available. The high strength torch body has proven impact resistance even at sub zero temperatures; enhanced by the rubber armoured lens ring, handle and side panels giving improved grip and shock protection. The lens is resistant to scratches and chemical attack; the enclosure is electrostatic non-hazardous and is sealed dust tight

and protected from water ingress with a certified IP66 enclosure. An integral stand is provided for easy Handlamp positioning and beam direction; ideal for using the Handlamp in 'stand-alone' applications.

The XT-200 'quick' charger base can fully recharge the Handlamp in 2 hours, dependent on model, and is configured as a Handlamp holder with 'snap-in / snatch-out' function, for quick release but secure retention. The charger operates from 12 – 24V DC vehicle voltage, and when combined with a mains power supply the charger will operate from 90 – 254V AC mains voltage. Emergency illumination function is selectable and allows the Handlamp to be used as an escape light, automatically illuminating if power to the charger is cut.

Very low maintenance and quick component replacement are key benefits of this product range. The LED light source is expected to last the product lifetime. All models are supplied with shoulder carrying straps.

Wolfliite XT Safety Handlamp Technical Specification				
Product Reference		XT-50	XT-70	XT-90
Description		Rechargeable Safety Handlamp		
Code		Standard	Performance	Performance+
Equipment Category		2G		
Type of protection		"ib" intrinsic safety		
Area of classification (Gases)		Zones 1 and 2, Gas groups IIA, IIB and IIC		
Temp Classification (Gases)		T4		
Temp ambient		-20°C to +40°C		
Certificate		Baseefa09ATEX0326		
Enclosure		Impact resistant thermoplastic, electrostatic non-hazardous		
Lens		Toughened glass		
Beam type		Spot	Spot/Flood	Spot/Flood/Signal
Light Source	Type	High power LED		
	Quantity	1 x white	2 x white	2 x white, 2 x coloured
	Output	200+ lm		
	Life	25000+ hours		
Power Source	Type	Rechargeable battery, Lithium-Ion		
	Version	XT-202	XT-204	XT-206
	Life	Up to 500 recharge cycles		
Light duration full/half		3.0/6.0 hours	6.0/12.0 hours	9.0/18.0 hours
Ingress protection		IP66 to EN60529: 1992		
Weight (incl cells)		1.2 Kg		
Compatible charger		XT-200:12-24Vdc XT-200 + RC300:90-254Vac		
Recharge time		2.0 hours	3.5 hours	4.5 hours

Changes to the above specifications available on request.

All information has been gathered under laboratory conditions, the user must regard the values given as approximate



WWW.CABLEJOINTS.CO.UK
THORNE & DERRICK UK
 TEL 0044 191 490 1547 FAX 0044 477 5371
 TEL 0044 117 977 4647 FAX 0044 977 5582
 WWW.THORNEANDDERRICK.CO.UK

