

Ridgiduct lighting

Ridgiduct lighting is a twin wall low weight flexible cable protection system, specially manufactured in orange for use in street lighting and traffic signal applications. A full range of access and junction boxes, bends, reducers and adaptors completes the system.

Ridgiduct Lighting				
Nom. Size	OD mm	Length m	Code	Pack Qty
94	110	6	RB94X6O(SL or TS)	95
100	118	6	RB100X6O(SL or TS) ▲	85
150	178	6	RB150X6O(SL or TS)	36

▲ Made to order and subject to lead times.
 Available with street lighting (SL) or traffic signal (TS) print. Please specify with order.



Key benefits

- Complies with BS EN 61386-24 : Type 450N, normal duty impact resistance
- BBA approved
- Impact resistance, even at low temperatures
- Flexible in application, with a minimal requirement for special bends
- Available with print options for traffic signals and street lighting



Polyduct lighting

Polyduct lighting is a single wall alternative to twin wall cable protection. Manufactured in orange MDPE or HDPE. It can be used in either open trench or trenchless applications.

Polyduct Lighting					
OD mm	ID mm	Wall Thickness	Length m	Code	Pack Qty
60	50	5	6	PD5060X6O(TS or SL)	250
63	56	3.5	6	PD5663X6O(TS or SL)	250
107	100	3.5	6	PD100107X6O(TS or SL)	85
107	97	5	6	PD97107X6O(TS or SL)	85

Available with street lighting (SL) or traffic signal (TS) print. Please specify with order.

Polyduct Lighting Bends				
OD mm	Angle	Radius mm	Code	Pack Qty
60	45°	350	PDB60X45O	25
60	90°	225	PDB60X90O	25
63	45°	350	PDB63X45O	25
63	90°	225	PDB63X90O	25
107	45°	450	PDB107X45O	1
107	90°	450	PDB107X90O	1

Lighting

Key benefits

- Compliance with BS EN 61386-24: Type 450N, normal duty impact resistance
- Long coil lengths for reduced jointing
- Factory installed Polypropylene twine and coupling

Ridgicoil lighting

Ridgicoil's flexibility eliminates the need for special bends and the smooth bore has a low co-efficient of friction for ease of cable installation.

Ridgicoil Lighting			
OD mm	ID mm	Length m	Code
63	50	50	RC63X50O(SL or TS)
110	94	50	RC110X50O(SL or TS)

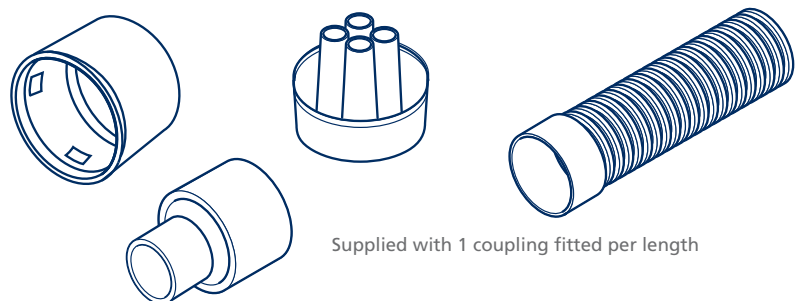
Available with street lighting (SL) or traffic signal (TS) print. Please specify with order.

Lighting in Scotland

Lighting in Scotland has specific requirements and for this purpose Polypipe manufacture a single wall cable protection range.

Scottish Lighting Purple Cable Protection & Fittings			
Description	Size mm	ID mm	Code
SINGLE WALL CORRUGATED			
100m coil	60	53	SSL60X100P ▲
40m coil	100	90	SSL100X40P ▲
JUNCTION BOXES			
	100		SSLJB100 ▲
CONNECTORS			
	60		SSLC60 ▲
	100		SSLC100 ▲
REDUCERS			
Slotted	100 x 60		SSLR100X60Slot ▲
Unslotted	100 x 60		SSLR100X60 ▲
END CAP			
			SSLEC4PIN

▲ Made to order and subject to lead times. Purple as standard. Other colours available on request. Minimum order 50 coils.



Access Boxes

Code	Description	Height mm	Opening		External	
			Width mm	Depth mm	Width mm	Depth mm
AC2902751	290 x 275	307	320	310	385	375
AC4503001	450 x 300	305	485	330	550	395
AC4504501	450 x 450	330	475	475	545	545
AC6004501	600 x 450	320	635	485	700	550
AC6006001	600 x 600	320	635	635	700	700

The clear opening for boxes is greater than the clear opening for frames.
See the relevant tables for details of clear opening frames.



Pole boxes

The range of 4 pole boxes is available in 290 x 275mm and 450 x 450mm sizes, incorporating integral housings for 114 and 140mm poles and are manufactured from polyethylene. The pole box provides 450mm depth of cover as standard, extendable if required using modular access boxes as rising sections.

Pole Boxes

Code	Description	Height mm	Opening		External		Pole Box
			Width mm	Depth mm	Width mm	Depth mm	ID
PB2902751	290 x 275 ▲	615	320	305	690	415	114
PB2902752	290 x 275 ▲	615	320	305	690	415	140
PB4504501	450 x 450 ▲	605	465	465	875	600	114
PB4504502	450 x 450 ▲	605	465	465	875	600	140

The clear opening for boxes is greater than the clear opening for frames.

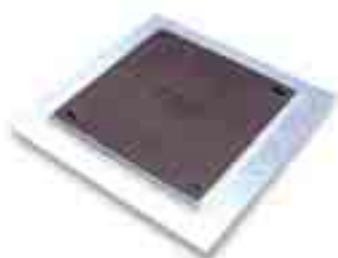
▲ Made to order and subject to lead times.



Key benefits

- Robust, single-piece injection or rotational mouldings
- High strength, structured wall construction
- Manufactured in impact resistant polyethylene for installation in all conditions
- Corrosion free and chemical resistant material
- Ultraviolet light resistant material, suitable for extended storage periods
- Light, easy to handle, transport and install
- Modular construction, allowing access boxes to be used as rising sections as required
- Pre-trepanned points of entry to accommodate 54, 63, 110 and 118mm outside diameter ducting
- Can also be stacked

Lighting



Composite covers

Advanced skid resistance composite covers are available for the range of access, pole and signal boxes. Manufactured in high strength, fibre-reinforced polyester resin and to BS EN 124 Class B 125.

Composite Covers	
Code	Nominal Size mm
CC290275	290 x 275
CC450300	450 x 300
CC450450	450 x 450
CC600450	600 x 450
CC600600	600 x 600

Composite Cover Frames	
Code	Nominal Size mm
CCF290275L	290 x 275
CCF450300L	450 x 300
CCF450450L	450 x 450
CCF600450L	600 x 450
CCF600600L	600 x 600

A locking frame is required and must be ordered separately.

Galvanised steel covers

Galvanised steel covers and frames are manufactured to the FACTA (Fabricated Access Cover Trade Association) Class B specification, equivalent to BS EN 124 Class B 125.



Galvanised Steel Covers & Frames	
Code	Nominal Size mm
GCF290275	290 x 275
GCF450300	450 x 300
GCF450450	450 x 450
GCF600450	600 x 450
GCF600600	600 x 600

Typical places of installation include areas subject to slow moving wheel loads, including footways, pedestrian areas, car parks and verges.

Ductile iron covers and frames

Ductile iron access box covers are manufactured to BS EN 124 Class B125.



Ductile Iron Covers & Frames	
Code	Clear Opening mm
DCF450450 ▲	450 x 450
DCF600450 ▲	600 x 450
DCF600600 ▲	600 x 600

▲ Made to order and subject to lead times.