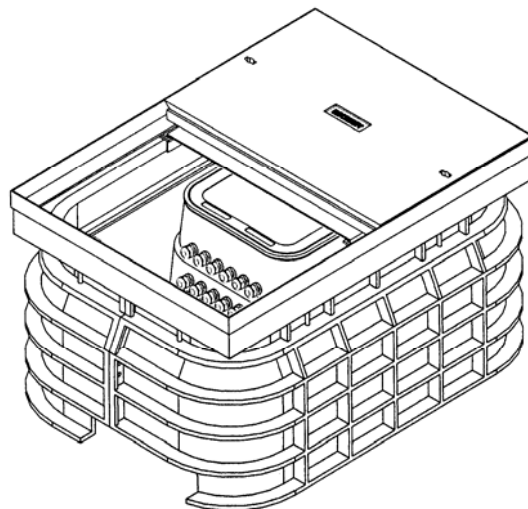


LVD/12S LV 12-WAY UNDERGROUND SERVICE DISTRIBUTION UNIT

LVD/12S	SERVICES	
TYPE	SINGLE PHASE	THREE PHASE
A	12	0
B	9	1
C	6	2
D	3	3
E	0	4
F	0	0



Application

LV Underground Distribution Unit (re-enterable) suitable for up to 12 connections with a combination of 3 phase, single phase and street light services.

Range

- | | |
|---------|--|
| Mains | - 70/185mm ² PVC Insulated, 600/1000V cables.
- 3 core solid aluminium |
| Service | - 4/35mm ² PVC Insulated, concentric service cable.
- circular solid aluminium
- circular stranded copper |

Features

- An easy to install, fully insulated, factory fitted connection unit with a BSEN124 (Grade B125) pavement access arrangement assembly.
- A re-enterable and inherently safe unit which facilitates a 'one man, one stop' visit for disconnection and re-connection of services, fault finding and fault repair.
- All phase and service connectors factory fitted and utilise the shear head bolt technology for consistent and reliable performance.
- All service glands are factory fitted. (IP68)
- Fully waterproofed connection unit (1 meter head of water) with lightweight re-sealable (rubber gasket) lid.
- The underground installation provides a vandal proof product, unobtrusive to the environment and, therefore, aesthetically acceptable to Building Developers.
- Eliminates the requirement for multiple, on-site, excavations by providing a marshalling point for connecting services.

Accessories

- Mains Breech Joint Kits
Ref: BMJ95W/EE, BMJ185W/EE, BMJ300W/EE



CABLE JOINTS, CABLE TERMINATIONS, CABLE GLANDS, CABLE CLEATS
FEEDER PILLARS, FUSE LINKS, ARC FLASH, CABLE ROLLERS, CUT-OUTS

11KV 33KV CABLE JOINTS & CABLE TERMINATIONS

FURSE EARTHING
www.cablejoints.co.uk

Thorne and Derrick UK

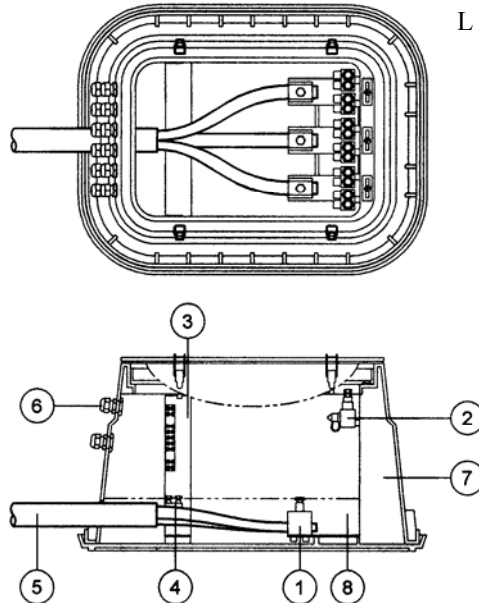
Tel 0044 191 490 1547 Fax 0044 191 477 5371
Tel 0044 117 977 4647 Fax 0044 117 9775582

LVD/12S

Product Features / Physical Dimensions

- Connection Unit (re-enterable)

h = 400mm
w = 560mm
L = 730mm



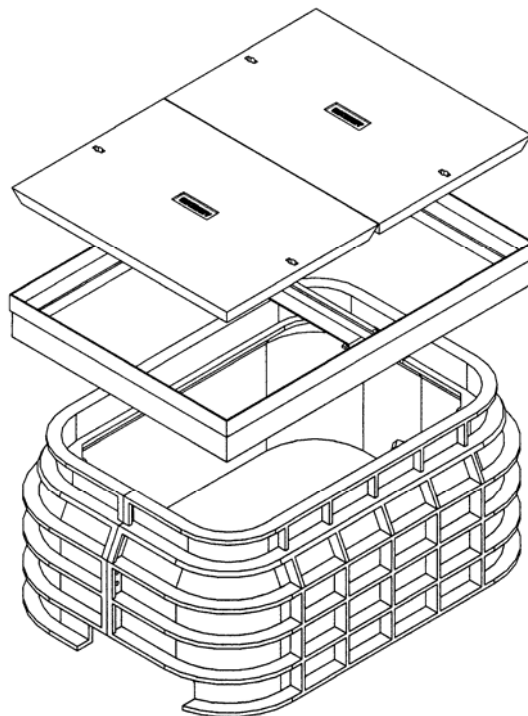
Material

- High Density
- Polyethelene (HDPE) - 31 kg

Key

1. Phase Connectors
2. Insulated Connector
3. Neutral/Earth Busbar
4. Neutral/Earth Connector
5. LV Mains Cable
6. Service Cable Ports
7. Factory Resin Fill
8. Customer Resin Fill (approx. 24 litres)

- Access Chamber Assembly



OPTION 1 (as shown)

Manhole Covers (2 off)

- Galvanised steel tray (concrete filled) - 44 kg each
- Galvanised steel frame (including cross arm) - 15 kg

Access Chamber

- High density polyethylene (HDPE) - 25 kg

OPTION 2

Block Paviers (3 off)

- Galvanised steel tray (75mm deep) 17.2 kg each
- Galvanised steel frame (including cross arm x 2) 52 kg

Access Chamber

- High density polyethylene (HDPE) - 25 kg