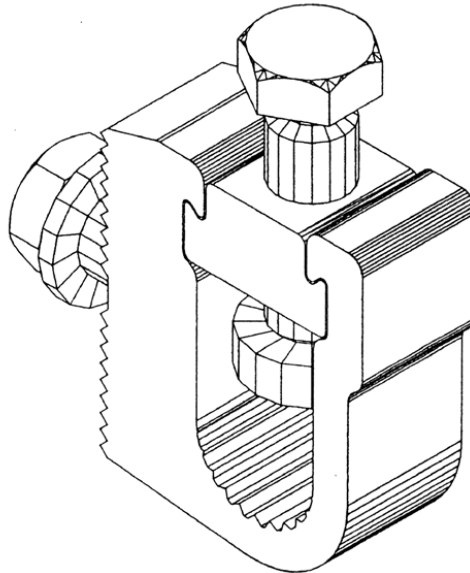


NET/1 Connectors



Principle Application

The connection of consac cable (aluminium sheath) to waveform cable neutral/earth wires.

Range

Product Reference	Conductor c.s.a. (mm ²)		Approx. Unit Weight (grammes)
	min	max	
NET/1	40	240	200

The Hepworth Neutral/Earth Connector has been designed to connect either stranded copper or stranded aluminium neutral/earth conductors of CNE (waveform) mains distribution cables to the aluminium sheath of CONSAC cable.

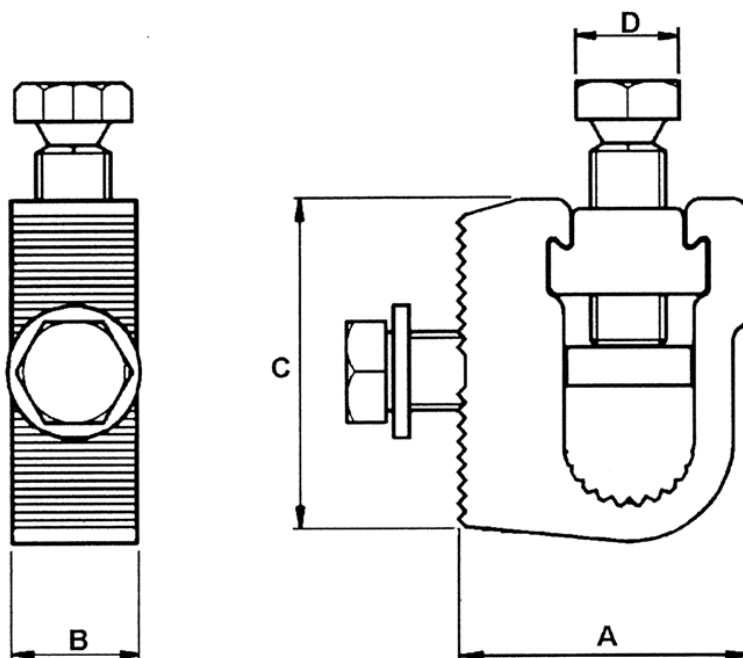
All joint configurations can be accommodated dependant on the total cross sectional area of neutral/earth conductor to be jointed.

Consac to Waveform,
Neutral / Earth
Connectors

MECHANICAL CONNECTORS

NET/1 Connectors

Physical Dimensions



Ref. Code	Dimensions (mm)			
	A	B	C	D
NET/1	37	16	44	13

Material

CZ121 Copper Alloy to BS2874

Fitting Instructions

1. Punch a M10 clearance hole in consac aluminium sheath and assemble connector to sheath.
2. Arrange the CNE conductors into a bunch and where necessary cut the conductors to length.
3. Thoroughly abrade all conductors around the assembly area.
4. Fit the conductors into the yoke, insert the bridge piece and tighten the screw until positive location is achieved.
5. Due to the connector employing a shear head system check for even distribution of the conductors before finally tightening the screw until the head shears.



WWW.CABLEJOINTS.CO.UK
THORNE & DERRICK UK
TEL 0044 191 490 1547 FAX 0044 477 5371
TEL 0044 117 977 4647 FAX 0044 977 5582
WWW.THORNEANDDERRICK.CO.UK