

INDUSTRIAL PLUGS AND SOCKETS TO BS196-1961



The Easigo series of industrial plugs and sockets BS196.1961 is now in the professional hands of Scame limited.

For over 40 years this range continues to provide a comprehensive choice of protected type non-reversible single phase plugs, sockets and switches interlocked sockets in current ratings from 5, 15 and 30 amperes.

The Easigo series also includes 3-phase fittings rated from 15 to 60 amperes using the same principal of construction and safety as defined in BS196.

The robust design combines cast metal and high performance moulded materials making them suited for the most arduous of environments – typical industries where this product is well entrenched are Power Stations, Steel Mills, Distilleries and Breweries, Chemical Plants, Railways and Airports not only in the United Kingdom but also overseas.

EASIGO - FEATURES

Range of protected type non-reversible plugs and sockets with scraping earth connections 5-60 Amperes.

The EASIGO range comprises single phase plugs and sockets to BS196 and also three-phase with our own arrangement of pin centres. The fittings have die cast zinc alloy casings and insulated materials are used for the back casings of the angle entry plugs and the spring flap covers of the 5 and 15 ampere 2 pole flush sockets. These materials have been specifically selected to withstand the arduous conditions encountered in industrial applications.



The EASIGO range provides a complete system of connections from the socket outlet on the wall to the appliance inlet mounted on apparatus.

REFERENCE STANDARDS

BS 196: 1961

Industrial Plugs & Sockets

BS196 FITTINGS (5-30 AMPERES)

In 1930, BS196 was issued as the first British Standard covering industrial plugs and sockets. The standard was revised in 1961 at which time many of the innovations introduced by ourselves since 1930 were included e.g. keys and keyways for voltage discrimination and fused plugs. The standard covers single phase fittings in current ratings of 5, 15 and 30 amperes.

SCAME UK THREE PHASE FITTINGS (15-60 AMPERES)

Until 1968, when BS4343 was issued, no British Standard existed to cover the requirement for three-phase plugs and sockets. SCAME UK, in similar manner to other manufacturers, produced fittings with their own unique pin configurations. The SCAME UK three-phase range was developed using the same principles of construction and safety as specified in BS196.

DEGREES OF INGRESS PROTECTION

The accessories supplied by SCAME UK conform to the ingress protection requirements specified by Clause 27, Section 5 of British Standard 196: 1961. Flush sockets 5 – 15 ampere, single phase have increased ingress protection to IP55. However, if fittings are being used in exposed outdoor installations, it is recommended that additional means of protection, such as canopies or enclosures, should be provided.

The SCRAPING EARTH feature provided by permanently resilient tongues fitted to the socket and connector casings ensures that the earth connection is made before and breaks after the main circuit connections and eliminates the need for a separate earth pin and tube.

Only BS196 offers the facility of industrial ring socket outlets which will prevent the insertion of an unfused plug. A range of appropriate fused plugs is available.

The EASIGO range of switch sockets incorporates mechanical interlocks which are designed so that the socket contacts are never accessible when live. The plug can only be withdrawn from the socket with the switch in the OFF position and the switch cannot be closed until the plug is fully inserted. Some of the switch sockets can be provided with RCCB protection.

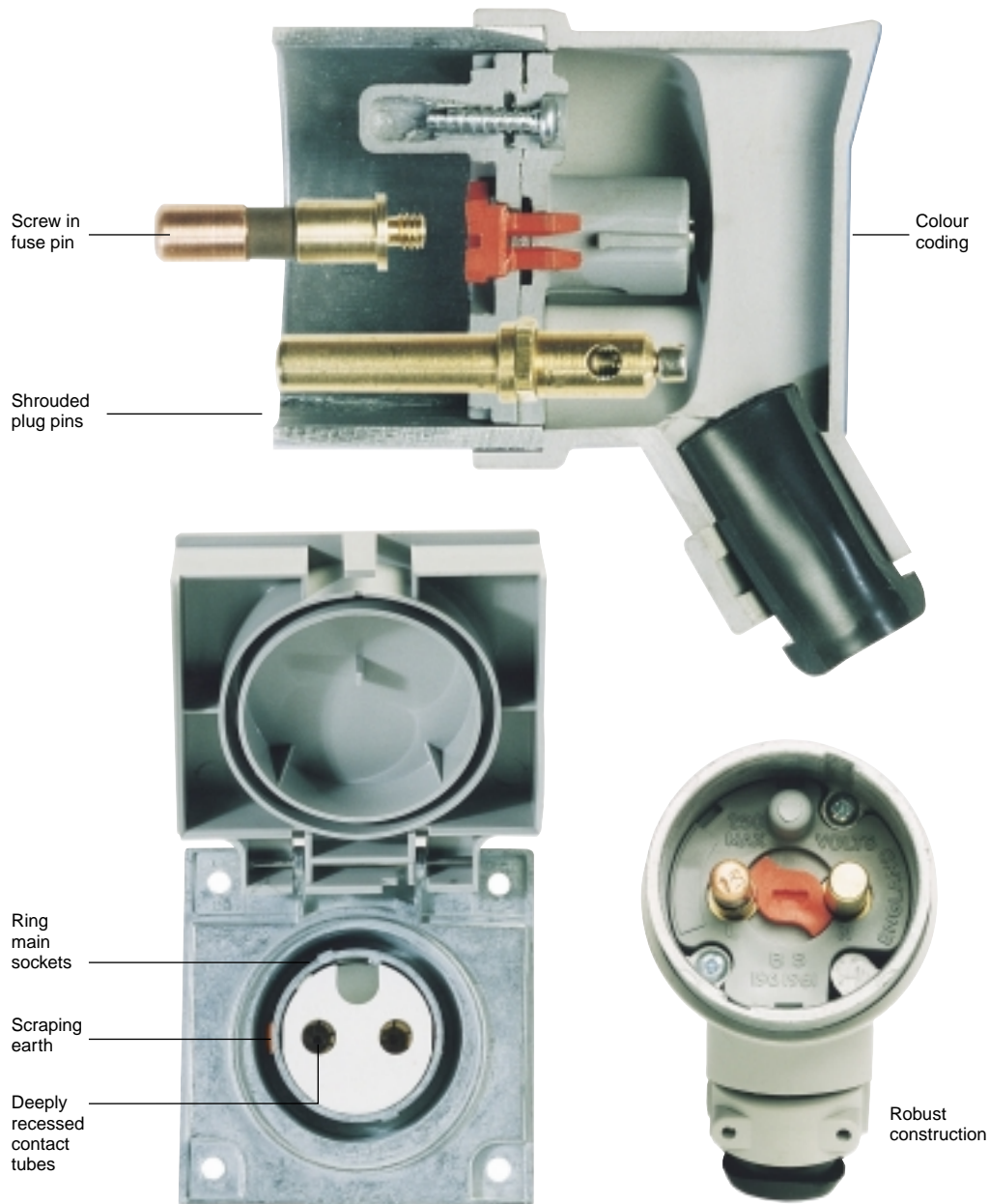
The pilot contacts provided are intended for use with continuously monitored earth proving devices, but they can be used with any protective system requiring an insulated contact. The pilot contact pin in the plugs is shorter in length than the phase pins and so makes after and breaks before the phase contacts. The current carrying capacity of the pilot contact is:

- 15 amp size – 10 amps
- 30 amp size – 25 amps

The pilot contact is not the earth contact of the fitting. Switch sockets can be supplied incorporating a pilot contact for use in multi-outlet earth monitoring

systems which require the monitoring circuit to be maintained when the plug is removed. These have an auxiliary contact on the rotary switch which opens before the main contacts close and closes after the main contacts open.

All switch sockets incorporate double pole or triple pole double break switches. The 5 and 15 ampere 2 pole switches are suitable for A.C. and D.C. while the remainder are suitable for A.C. systems only. The units containing mercury switches are suitable for A.C. and D.C. systems and must be mounted vertically.



1 **PLUG & SOCKETS**

IEC309
EUREKA
ADAPTORS
EASIGO
HEAVY DUTY
CEE60

2 **COMBINATION UNITS**

OMNIA
ADVANCE
QUADRA
Distribution assemblies
MEGA
MASTERBOX
DOMINO
BLOCK
GOMMA
PDU

3 **ENCLOSURES & BOXES**

EASYBOX
DOMINO
BLOCK
SCABOX
ALUBOX
ACCESSORIES

4 **INSTALLATION ACCESSORIES**

TRUNKINGS
LUMINAIRES
CABLE REELS
FUSES
SWITCHES
CONNECTORS

INDEX

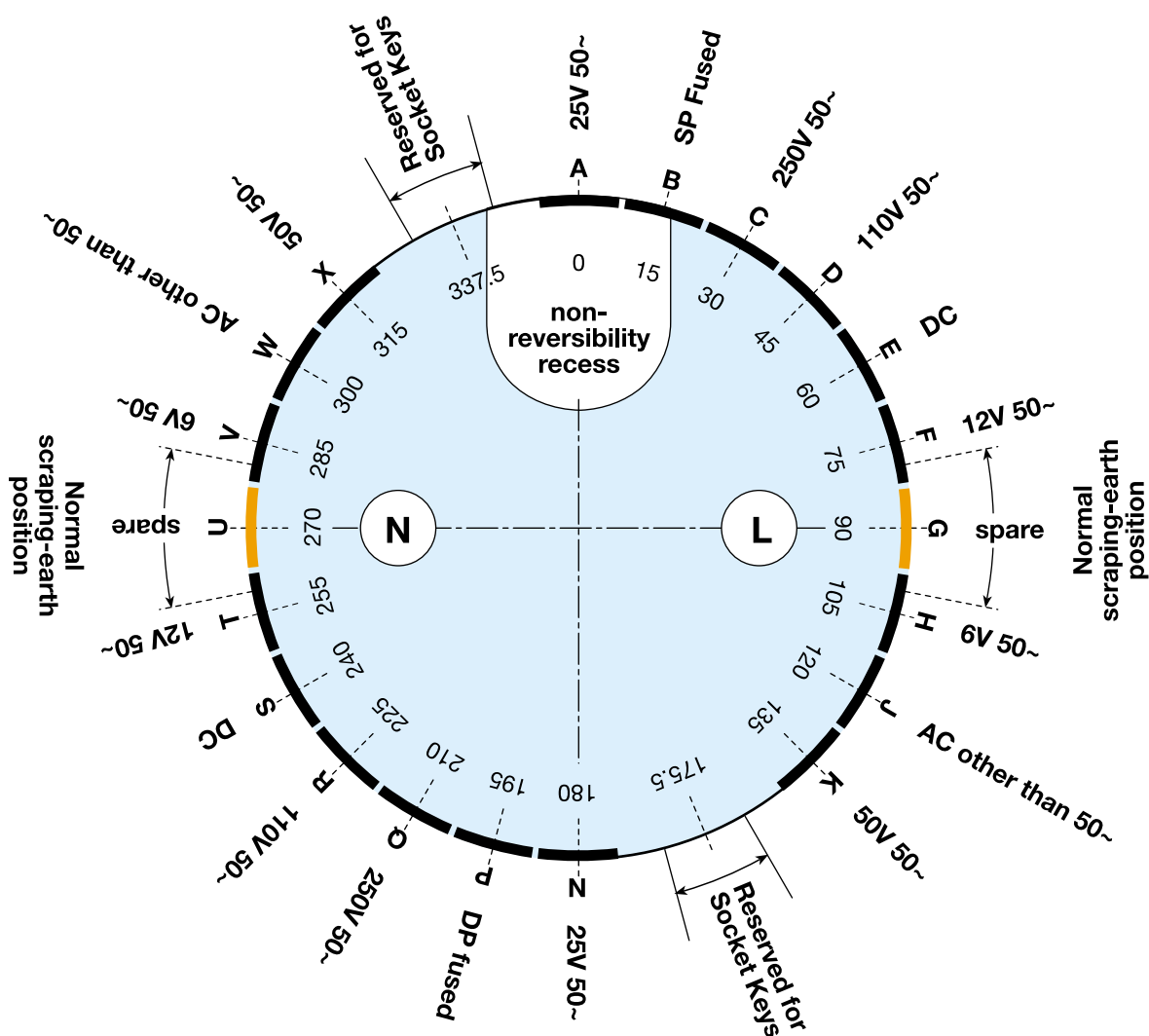
EASIGO Series

EASIGO - FEATURES

Plug and socket key and keyway positions for non-interchangeability.

In addition to the differences in the size of the casings and the size and position of the contact pins, BS196: 1961 requires that undesirable interchangeability between accessories shall also be prevented by the use of key and keyways on the plug and socket casings.

The key and keyway combinations which have been established for different systems are as shown overleaf and the diagram below. The corresponding key positions of the plug or appliance inlet when looked at from the front are the opposite to those shown below.



View looking at the front face of the socket-outlet or connector.

This catalogue contains products with voltage/frequency discrimination of popular demand. Other variations are available on request.

THREE-PHASE PLUGS AND SOCKETS

In addition to the standard 415 volt arrangements, the three-phase (3 pole) fittings are also available as types AN, XK and DR. In this connection the symbols are used for the purpose of convenience and do not necessarily conform with the appropriate voltage and frequency laid down for single phase fittings in BS196: 1961.

Code AN

Normally for 125V 200Hz systems

Code XK

Normally for 50V 50Hz systems

Code DR

Normally for 110V 50Hz systems

COLOUR CODING

In addition to the above key and keyway system, the 5 and 15 ampere 2 pole fittings are colour coded as follows:

- 240 volt – blue
- 50 volt – white
- 110 volt – yellow
- 25 volt – violet





CURRENT RATINGS

The plugs and sockets can carry currents in excess of their stated capacity. The maximum continuous ratings are as follows, provided that adequate cabling is used:

- 5 ampere
- 10 ampere max
- 15 ampere
- 20 ampere max
- 30 ampere
- 40 ampere max
- 60 ampere
- 80 ampere max

SCHEDULE OF AVAILABLE KEY AND KEYWAY COMBINATIONS

Commonly used configuration

Voltage	Colour	Frequency	Keyway 1	Keyway 2	Keyway 3	Earth	Code
25		50	None	0°	180°	Yes	AN
50		50	None	135°	315°	Yes	XK
110		50	None	45°	225°	Yes	DR
± 240		50	None	None	None	Yes	None

Alternative configurations available:- Contact Sales Hotline

π * 240	50	None	30°	120°	Yes	CQ
π 25	other than 50 (e.g. 60)	0°	120°	300°	Yes	AJW
π 50	other than 50 (e.g. 60)	315°	120°	300°	Yes	XJW
π 110	other than 50 (e.g. 60)	45°	120°	300°	Yes	DJW
π 240	other than 50 (e.g. 60)	30°	120°	300°	Yes	CJW
π ■ 25	D.C.	0°	60°	240°	Yes	AES
π ■ 50	D.C.	315°	60°	240°	Yes	XES
π ■ 110	D.C.	45°	60°	240°	Yes	DES
π ■ 240	D.C.	30°	60°	240°	Yes	CES

* Included for situations where complete non-interchangeability is essential.

± Original design to BS196: 1930.

π Only available with EASIGO flush socket outlets with spring flap covers & angle entry plugs.

■ Fused plugs must not be used in D.C. systems.

1 ?

PLUG & SOCKETS

IEC309

EUREKA

ADAPTORS

EASIGO

HEAVY DUTY

CEEEO

2 ?

COMBINATION UNITS

OMNIA

ADVANCE

QUADRA

Distribution assemblies

MEGA

MASTERBOX

DOMINO

BLOCK

GOMMA

PDU

3 ?

ENCLOSURES & BOXES

EASYBOX

DOMINO

BLOCK

SCABOX

ALUBOX

ACCESSORIES

4 ?

INSTALLATION ACCESSORIES

TRUNKINGS

LUMINAIRES

CABLE REELS

FUSES

SWITCHES

CONNECTORS

INDEX

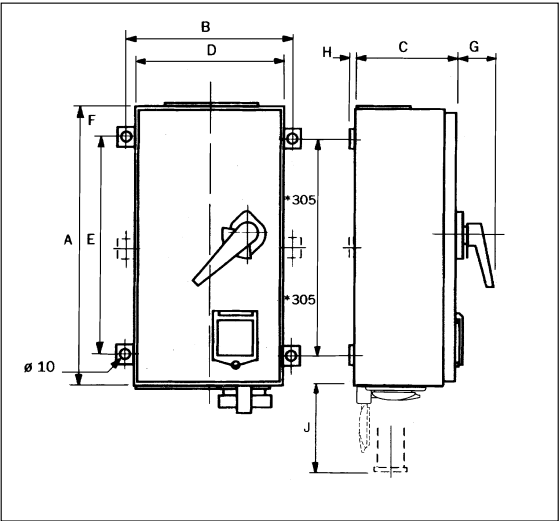
EASIGO Series

FUSE SWITCH SOCKET WITH RCCB PROTECTION

Designed for and approved by the former Central Electricity Generating Board.

Features

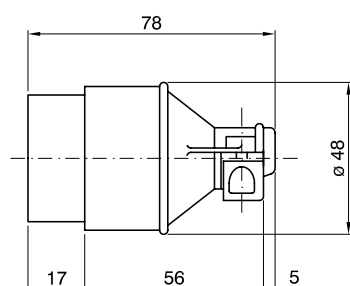
- Sheet steel enclosure with durable dark admiralty grey finish which has been subjected to appropriate environmental tests.
- Units meet IP44 specification.
- The units have undrilled gland plates to top and bottom, facilitating top or bottom cable entry.
- A die cast cover with padlocking facility gives access to the RCCB which has a tripping sensitivity of 30mA operating in a maximum of 30mS.
- The fuse switch is interlocked with the lid and the socket outlet.
- Unit is fully interlocked and cannot be switched on until the correct plug is fully inserted, nor can the plug be withdrawn on load.
- Provision for padlocking the switch handle in the OFF position.
- Units are tested at through fault level of 31.5MVA.
- If necessary, units can be supplied without the RCCB and solid links can be fitted in place of fuses.
- Units can also be provided with an earth monitoring facility in accordance with optional features in CEGB specification.
- Designed to loop up to 35mm² cables.



60 A

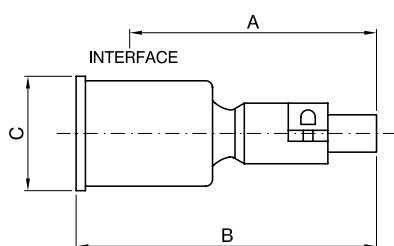
Description	A	B	C	D	E	F	G	H	J	Max cable	Earth Stud	Wt. Kg
										Phase		
60A All types	560	326	205	296	440	60	75	2	155	35 mm ²	M8	23

PLUGS

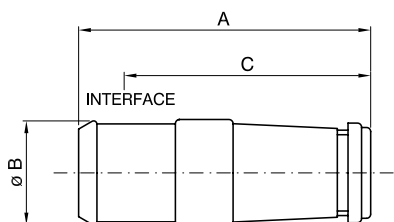


Straight

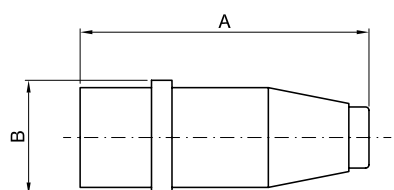
Description	Max. Cable mm ²		Max. Cable Ø	Wt. Kg
5A	L&N PINS	4	11	.12
	EARTH PINS	2.5	11	.12



Description		A	B	C	Max. Cable mm ²		Max. Cable Ø	Wt. Kg
					Phase	Earth		
15A	2POLE + E	83	104	48	6	6	12	.25
	3POLE + E	83	104	57	6	6	13	.33

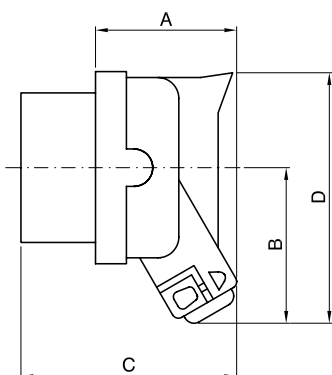


Description		A	B	C	Max. Cable mm ²		Max. Cable Ø	Wt. Kg
					Phase	Earth		
60A	ALL TYPES	200	74	148	25	16	30	1.4



3 pole fused

Description		A	B	Max. Cable mm ²		Max. Cable Ø	Wt. Kg
				Phase	Earth		
15A	3POLE + E	137	58	6	6	16	.29



Angled

Description		A	B	C	D	Max. Cable mm ²		Max. Cable Ø	Wt. Kg
						Phase	Earth		
5A	2POLE + E	48	43	64	65	6	2.5	11	.10
15A	2POLE + E	47	47	70	73	6	6	12	.14
	2POLE + PILOT + E	49	52	75	78	6	6	13	.17
	3POLE + E	49	52	75	78	6	6	13	.17
	3POLE + PILOT + E	63	58	92	93	10	10	18	.32
30A	2POLE + E	63	58	92	93	10	10	18	.32
	2POLE + PILOT + E	63	58	92	93	10	10	18	.32
	3POLE + E	65	65	96	100	10	10	18	.32
	3POLE + PILOT + E	65	65	96	100	10	10	18	.32

1 ?
PLUG &
SOCKETSIEC309
EUREKA
ADAPTORS
EASIGO
HEAVY DUTY
CEEEO2 ?
COMBINATION
UNITSOMNIA
ADVANCE
QUADRA

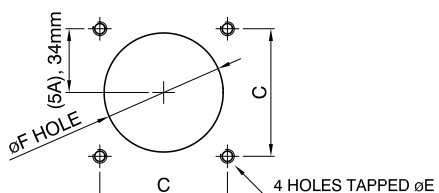
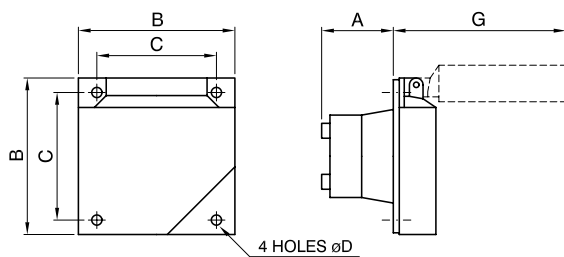
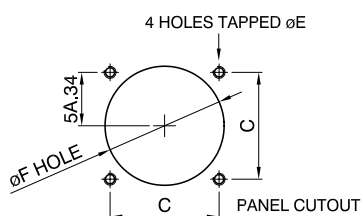
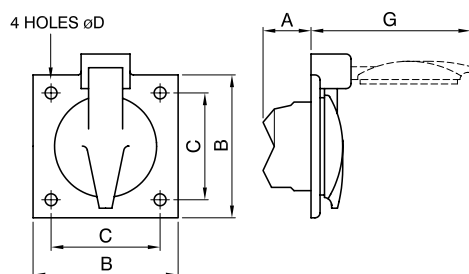
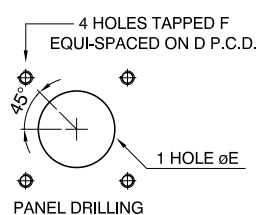
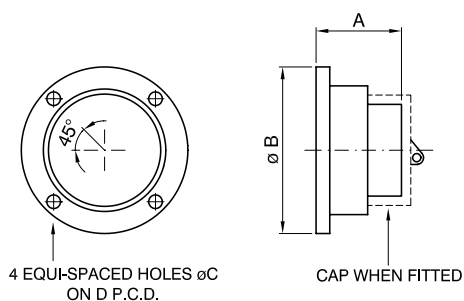
Distribution assemblies

MEGA
MASTERBOX
DOMINO
BLOCK
GOMMA
PDU3 ?
ENCLOSURES
& BOXESEASYBOX
DOMINO
BLOCK
SCABOX
ALUBOX
ACCESSORIES4 ?
INSTALLATION
ACCESSORIESTRUNKINGS
LUMINAIRES
CABLE REELS
FUSES
SWITCHES
CONNECTORS

INDEX ?

EASIGO Series

SOCKETS



Surface

Description	A	B	C	D	E	F	Max. Cable mm ²	Wt. Kg
5A 2POLE + E	27	57	3.5	51	25	M3	6	.12
15A 2POLE + E	38	68	4.5	60.5	36	M3.5	10	.25
15A 2POLE + PILOT + E	42	76	4.5	68	44	M3.5	10	.30
15A 3POLE + E	42	76	4.5	68	44	M3.5	10	.30
15A 3POLE + PILOT + E	56	84	4.5	76	50	M3.5	10	.53
30A ALL TYPES	56	84	4.5	76	50	M3.5	25	.53
60A ALL TYPES	82.5	108	7	95	60	M6	25	1.2

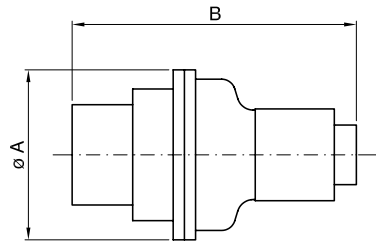
Flush (circular flap)

Description	A	B	C	D	E	F	G	Max. Cable mm ²	Wt. Kg
15A 2POLE + PILOT + E	46	86	68	5.5	M5	73	95	10	.5
15A 3POLE + E	46	86	68	5.5	M5	73	95	10	.48
15A 3POLE + PILOT + E	59	111	85.5	5.5	M5	80	108	10	.88
30A ALL TYPES	59	111	85.5	5.5	M5	80	108	25	.88
60A ALL TYPES	95	100	80	5.8	M5	92	110	25	1.0

Flush (square flap) IP55

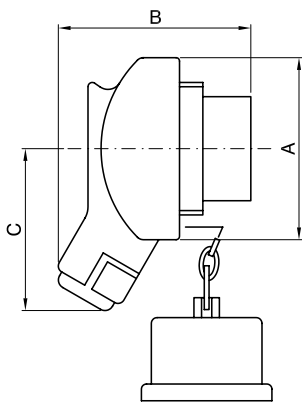
Description	A	B	C	D	E	F	G	Max. Cable mm ²	Wt. Kg
5A 2POLE + E	27	76	57	4.5	M3.5	54	85	6	.17
15A 2POLE + E	40	86	68.3	5.5	M5	73	95	10	.27

CONNECTORS



Straight

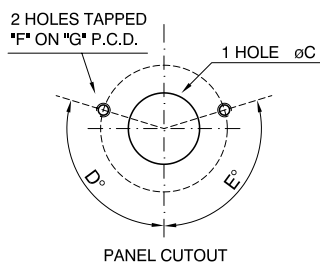
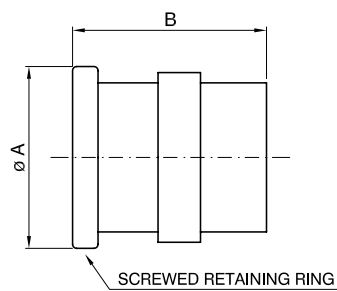
Description		A		Max. Cable mm ²		Max. Cable Ø	Wt. Kg
				Phase	Earth		
15A	3POLE + PILOT + E	84	104	10	6	18	.85
30A	2POLE + E	84	104	25	10	18	.85
	2POLE + PILOT + E	84	104	25	10	18	.85
	3POLE + E	84	104	25	10	18	.85
	3POLE + PILOT + E	84	104	25	10	25	.85



Angled

Description		A		B	C	Max. Cable mm ²		Max. Cable Ø	Wt. Kg
						Phase	Earth		
5A	2POLE + E	64	64	54	6	2.5	11	.17	
15A	2POLE + E	74	77	60	10	2.5	12	.31	
	2POLE + PILOT + E	82	82	64	10	2.5	13	.36	
	3POLE + E	82	82	64	10	2.5	13	.36	

APPLIANCE INLETS



Surface

Description		A		B	C	D	E	F	G	Max. Cable mm ²		Max. Cable Ø	Wt. Kg
										Phase	Earth		
5A	2POLE + E	42	49	20	42	147.5	4BA	29.5		6		2.5	.13
15A	2POLE + E	58	58	26	73	73	M3	35		6		6	.25
	3POLE + E	66	64	26	73	73	M4	48.5		6		6	.34
30A	2POLE + E	70	77	40	90	90	4BA	48.5		10		10	.34
	3POLE + E	71.5	73	90	40	90	4BA	48.5		10		10	.37

1 ?

PLUG & SOCKETS

IEC309
EUREKA
ADAPTORS
EASIGO
HEAVY DUTY
CEEEO

2 ?

COMBINATION UNITS

OMNIA
ADVANCE
QUADRA
Distribution assemblies
MEGA
MASTERBOX
DOMINO
BLOCK
GOMMA
PDU

3 ?

ENCLOSURES & BOXES

EASYBOX
DOMINO
BLOCK
SCABOX
ALUBOX
ACCESSORIES

4 ?

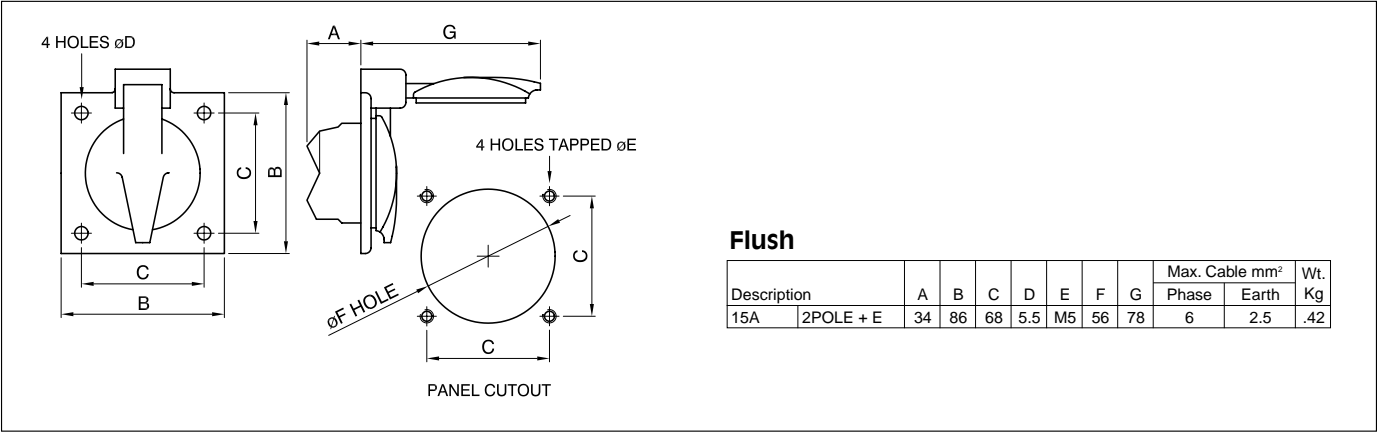
INSTALLATION ACCESSORIES

TRUNKINGS
LUMINAIRES
CABLE REELS
FUSES
SWITCHES
CONNECTORS

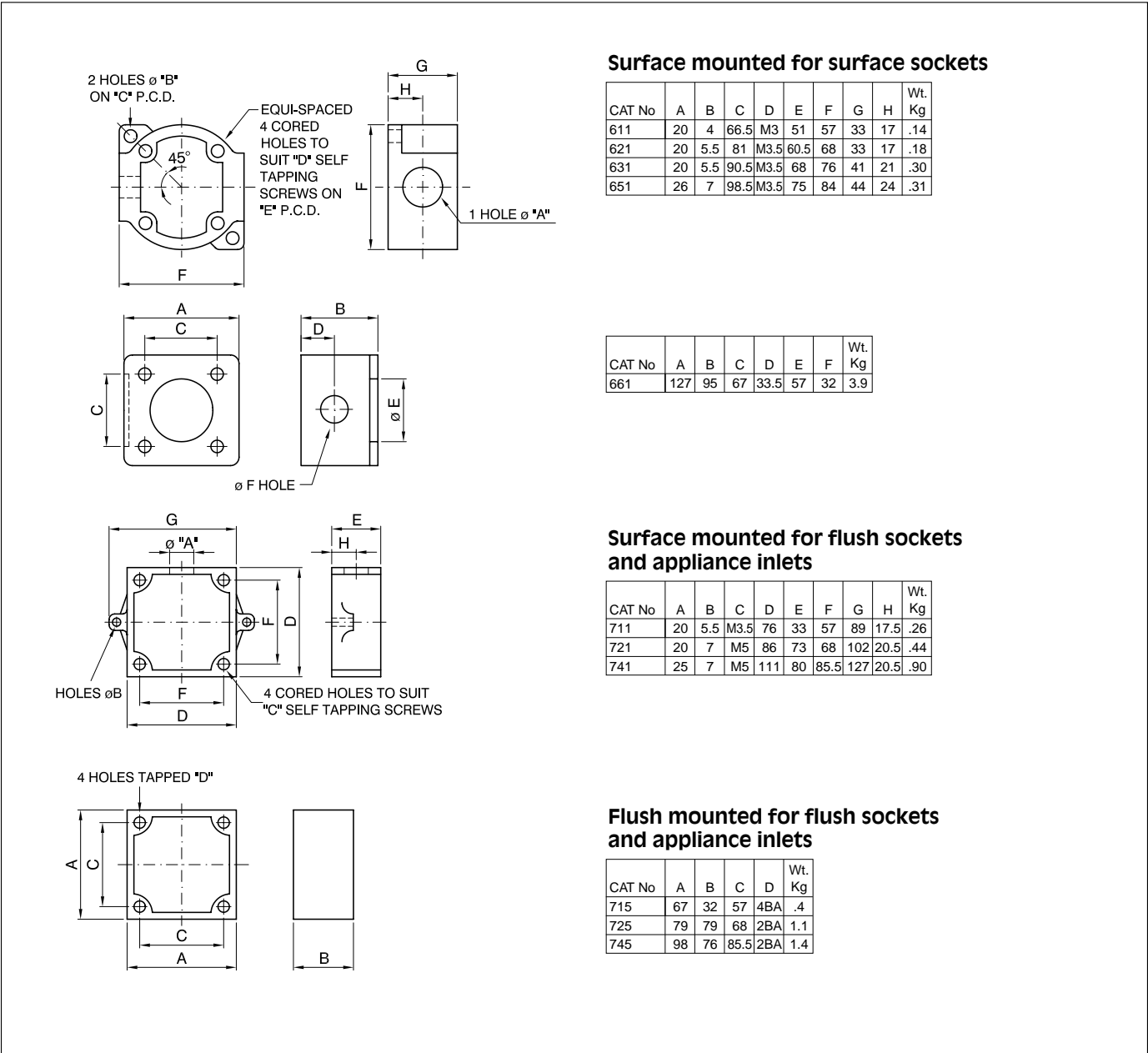
INDEX

EASIGO Series

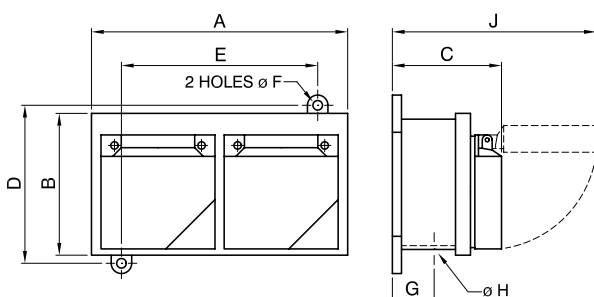
APPLIANCE INLETS



CONDUIT BOXES

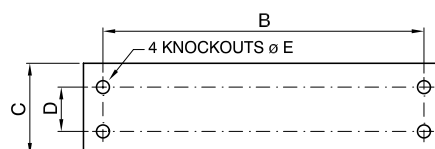
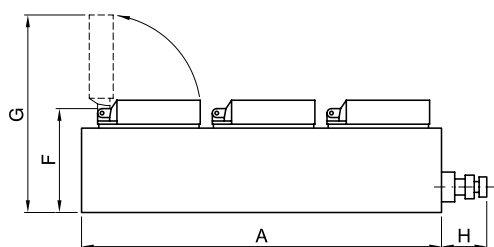


MULTI-SOCKET OUTLETS



Metal housing

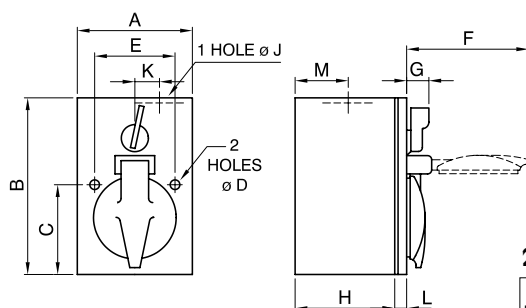
Description	A	B	C	D	E	F	G	H	J	Max. Cable mm ²		Wt. Kg
										Phase	Earth	
5A 2POLE + E	186	113	102	120.5	101.5	7	2	21	165	10	4	1.8
15A 2POLE + E	186	113	102	120.5	101.5	7	2	21	175	10	4	2.0



Insulated housing

Description		A	B	C	D	E	F	G	H	Max. Cable mm ²		Max. Cable Ø	Wt. Kg
										Phase	Earth		
5A	2POLE + E 2 GANG	204	159	91	71	7	104	167	40	10	10	21	1.1
	2POLE + E 3 GANG	360	315	91	71	7	104	167	40	10	10	21	1.5
15A	2POLE + E 2 GANG	204	159	91	71	7	104	177	40	10	10	21	1.3
	2POLE + E 3 GANG	360	315	91	71	7	104	177	40	10	10	21	1.9

INTERLOCKED SWITCHED SOCKETS



2 pole + earth 5 and 15 amperes

Description	A	B	C	D	E	F	G	H	J	K	L	M	Max. Cable mm ²		Wt. Kg
													Phase	Earth	
5A 2POLE + E	76	121	60	5	50.5	73	14	67	21	14.5	5	24	6	6	.95
15A 2POLE + E	86	137	68	5	63.5	76	17	75	21	16	6	24	6	6	1.2

1 ? PLUG & SOCKETS

IEC309
EUREKA
ADAPTORS
EASIGO
HEAVY DUTY
CEEEO

2 ? COMBINATION UNITS

OMNIA
ADVANCE
QUADRA
Distribution assemblies
MEGA
MASTERBOX
DOMINO
BLOCK
GOMMA
PDU

3 ? ENCLOSURES & BOXES

EASYBOX
DOMINO
BLOCK
SCABOX
ALUBOX
ACCESSORIES

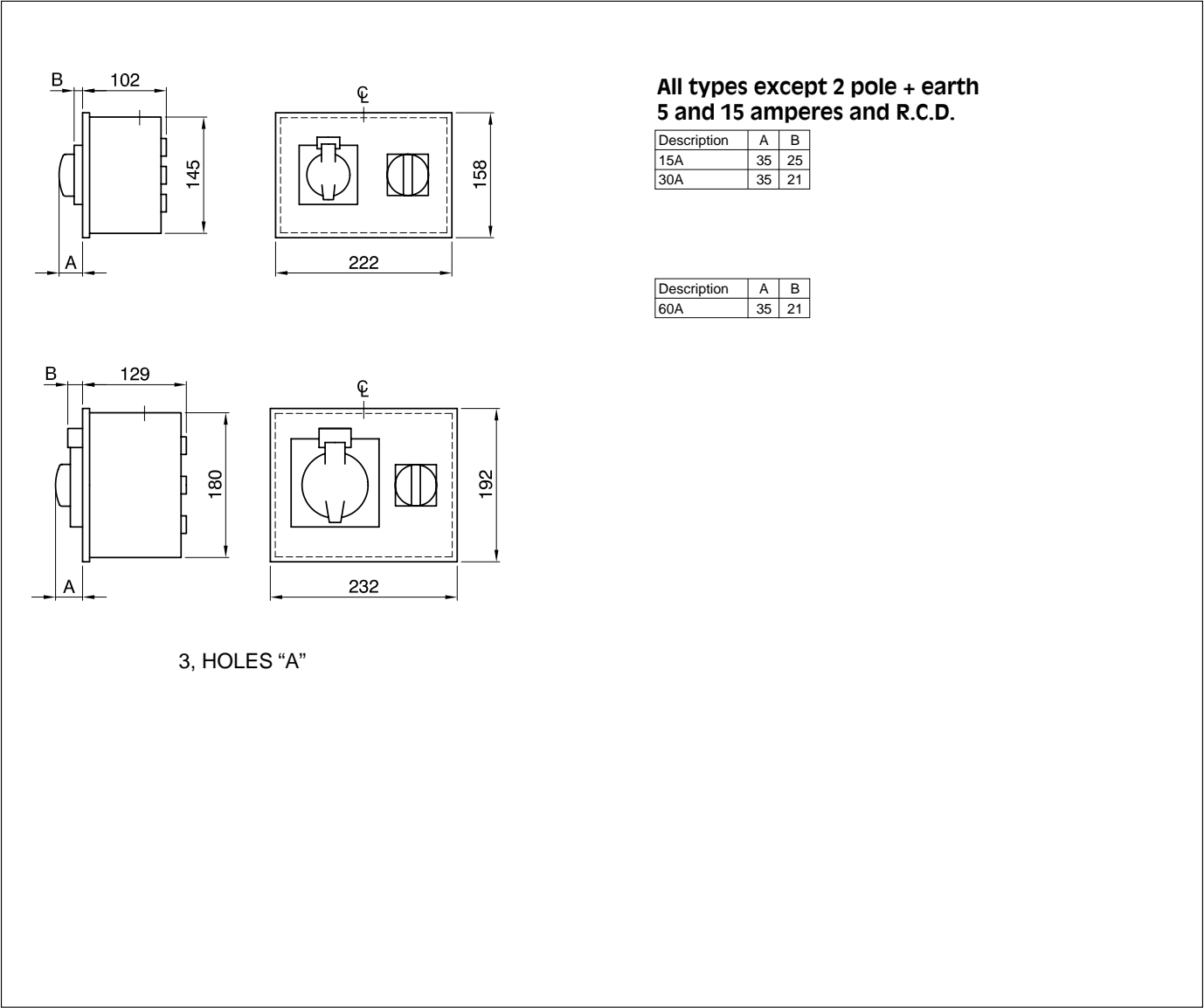
4 ? INSTALLATION ACCESSORIES

TRUNKINGS
LUMINAIRES
CABLE REELS
FUSES
SWITCHES
CONNECTORS

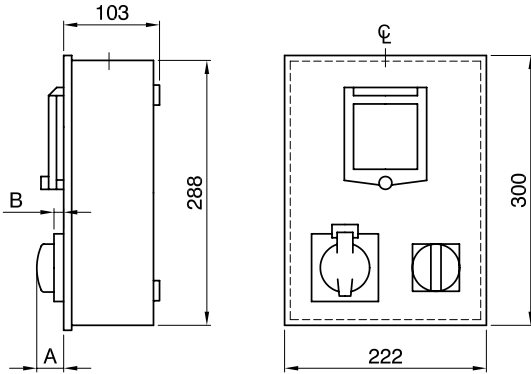
INDEX

EASIGO Series

INTERLOCKED SWITCHED SOCKETS

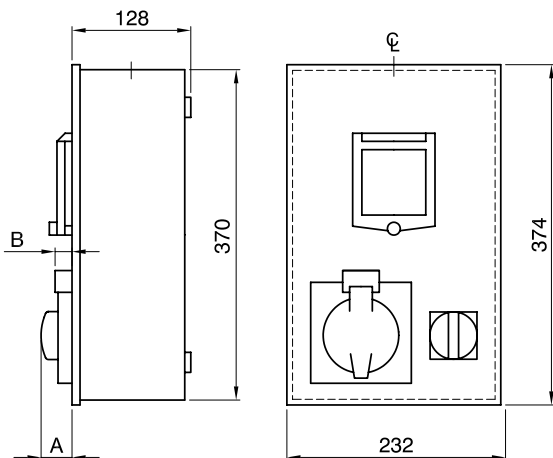


INTERLOCKED SWITCHED SOCKETS



Interlocked switched sockets with R.C.D.

Description	A	B
15A	35	25
30A	35	21



Description	A	B
60A	35	21



CABLE JOINTS, CABLE TERMINATIONS, CABLE GLANDS, CABLE CLEATS
FEEDER PILLARS, FUSE LINKS, ARC FLASH, CABLE ROLLERS, CUT-OUTS

11KV 33KV CABLE JOINTS & CABLE TERMINATIONS
FURSE EARTHING
www.cablejoints.co.uk
Thorne and Derrick UK

Tel 0044 191 490 1547 Fax 0044 191 477 5371
Tel 0044 117 977 4647 Fax 0044 117 9775582

1 PLUG & SOCKETS

IEC309
EUREKA
ADAPTORS
EASIGO
HEAVY DUTY
CEEGO

2 COMBINATION UNITS

OMNIA
ADVANCE
QUADRA
Distribution assemblies
MEGA
MASTERBOX
DOMINO
BLOCK
GOMMA
PDU

3 ENCLOSURES & BOXES

EASYBOX
DOMINO
BLOCK
SCABOX
ALUBOX
ACCESSORIES

4 INSTALLATION ACCESSORIES

TRUNKINGS
LUMINAIRES
CABLE REELS
FUSES
SWITCHES
CONNECTORS

INDEX