



- Royce Thompson, a leading brand in the Thomas & Betts Corporation portfolio, has been synonymous with Photo Electronic controls for the street and amenity lighting market since 1963 and continues to lead the market in quality, innovation and service.
- Extensive investment in R&D and patented features such as 'synchronous switching' combined with our unique 'ASIC' (*Application specific integrated circuit*) ensure that Royce Thompson photocells offer the best in low energy consumption, high reliability and long life - helping you, the user, deliver the lowest carbon footprint.
- Royce Thompson products are RoHS compliant, UMSUG rated where appropriate and comply with EMC emission and immunity standards.

Microstar 2000

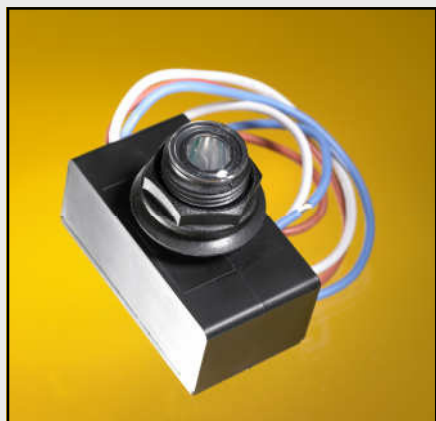
A miniature photocell with the same outstanding performance and accuracy as the Oasis 2000; perfect for street lighting and other applications where aesthetics or vandal resistance require a miniature cell but performance cannot be compromised.

KEY FEATURES

- 25 year life, with 8 years warranty.
- Very low power consumption.
- Filtered Silicon Photodiode.
- Patented ASIC Control.
- Extremely accurate switching.
- 'Zero crossover voltage' switching.
- Compact dimensions.
- RoHS Compliant.

APPLICATIONS

- Arterial Roadway lighting.
- Vandal resistant street lighting.
- Aesthetic / architectural lighting.
- 'High bay' lighting.
- Floodlighting.
- Tunnel and underpass lighting.
- Car Park lighting.

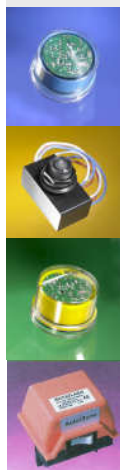


SPECIFICATION

Sensor type	Filtered Silicon Photodiode.
Sensor drift	Zero over 10 years.
Standard switching level	70 Lux 'On', 35 Lux 'Off'.
Switching differential	1:0.5.
Operating voltage	220 / 270 Vac, 50/60 Hz.
Maximum lamp load (HID)	3 x 400W inductive (96µF), 10A.
Switching cycles	20,000 minimum.
Power consumption	< 0.25W.
UMSUG Code	9500000.
Operating temperature range	-20 / +80°C.
Warranty	8 years.
Ingress protection (Lens)	IP65.
Alternative Switching Levels	Set to meet customers requirements.
Options	Positive switching differential, lead lengths to suit application.
Dimensions (mm)	W 31, L 57, D 25, lens diameter 20, lens projection 25.

DESIGN AND TESTING CERTIFICATION

EMC Emissions to EN 50081-1.
EMC Immunity to EN 50081-2.
Vibration to BS2100.
IP rating to BS EN 60529/1992.
Specification to BS 5972—1980, ANSI C136.10 / 1996, ANSI C136.2 / 2004, ESMA 48 / 01.



Thomas&Betts



WWW.CABLEJOINTS.CO.UK
THORNE & DERRICK UK
TEL 0044 191 490 1547 FAX 0044 477 5371
TEL 0044 117 977 4647 FAX 0044 977 5582
WWW.THORNEANDDERRICK.CO.UK