

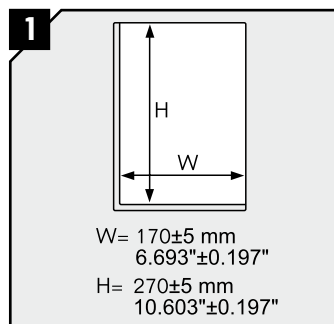


WWW.CABLEJOINTS.CO.UK
THORNE & DERRICK UK
TEL 0044 191 490 1547 FAX 0044 477 5371
TEL 0044 117 977 4647 FAX 0044 977 5582
WWW.THORNEANDDERRICK.CO.UK

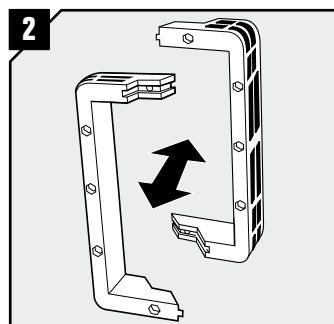


Installation Instructions Roxtec KFO 6x1 with flange

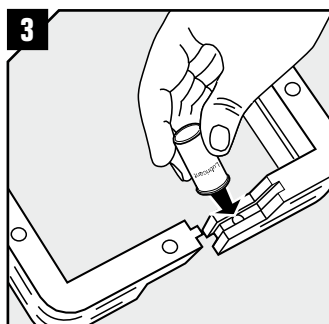
Frame installation



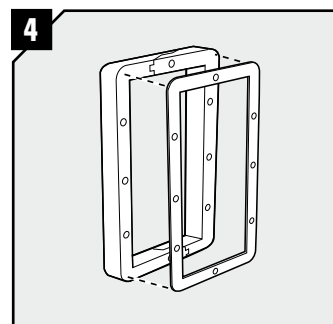
Make an opening in the wall structure for the flange.



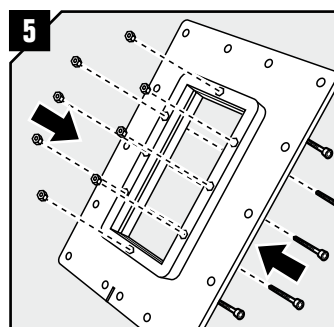
Divide the frame into two frame parts.



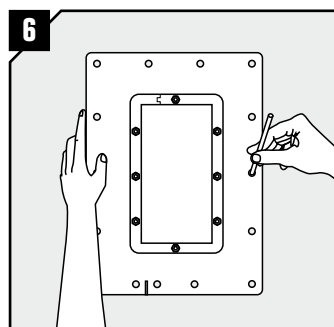
Lubricate all end surfaces of the frame parts with Roxtec Lubricant.



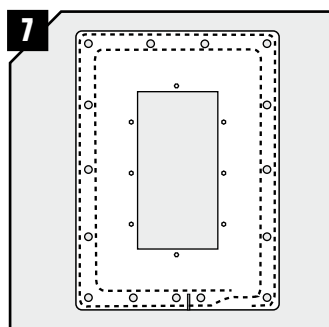
Remove the protection foil from the gasket. Apply the gasket onto the frame part facing the flange.



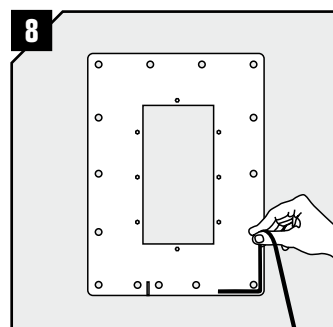
Place one frame part on each side of the flange. Insert all bolts and nuts. Recessed bolt holes must point outwards, away from the flange. Tighten approx 7 Nm.



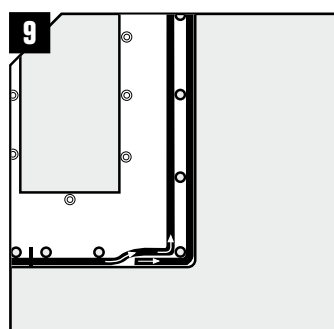
Use the flange to mark where to drill the holes for the flange, and drill the holes.



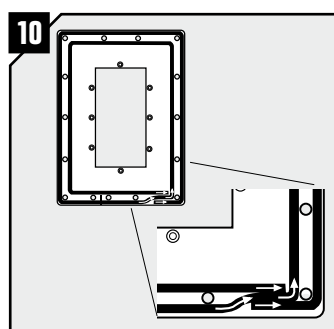
The sealing strip should be attached along the dotted line shown in the illustration.



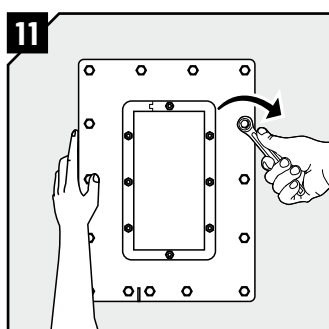
Remove the protecting film from the sealing strip. Fasten the sealing strip. Start on the outer edge at the bottom of the flange.



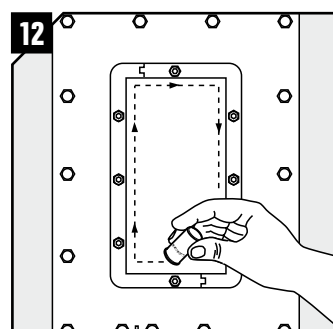
When the outer revolution close to the edge is finished, continue on the inside beside the holes in the flange.



At the end, there will be two revolutions. The sealing strip prevent intrusion of dust and water.

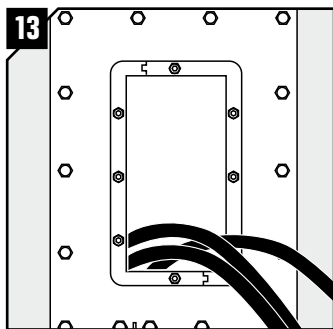


Bolt the flange with the sealing strip against the wall structure.



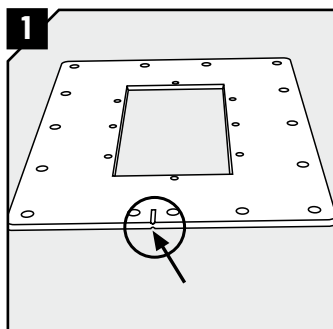
Remove any dirt inside the frame before lubricating the inside surfaces with Roxtec Lubricant. Put an extra amount of lubricant into the corners.



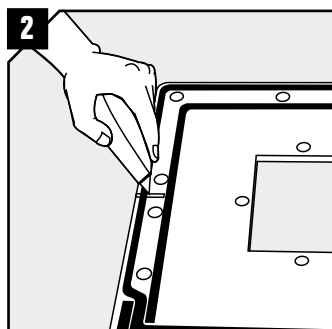


Pull the cables/pipes through and continue to module installation.

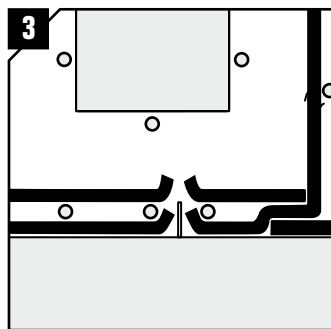
Installation around existing cables



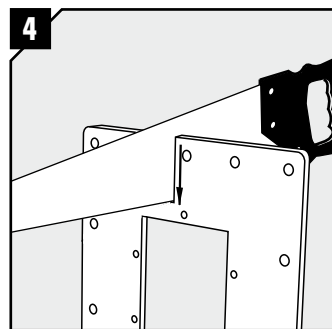
Locate the mark at the bottom of the flange.



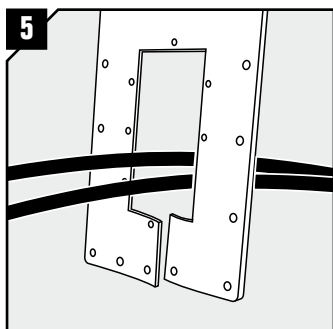
Use a sharp knife and cut the sealing strip.



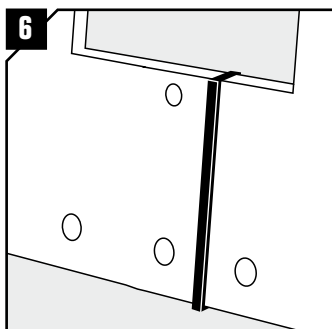
Change the direction of the sealing strip ends. They must not be harmed by the saw in pic. 4.



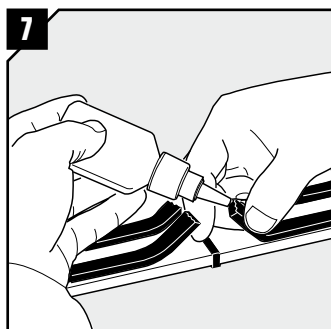
Saw through the short side of the flange where the mark is and where you cut the sealing strip.



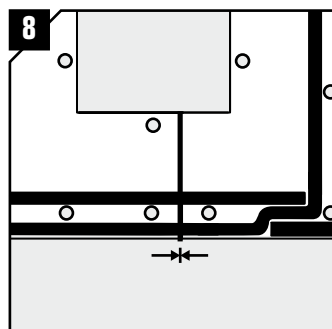
Put the flange around the cables.



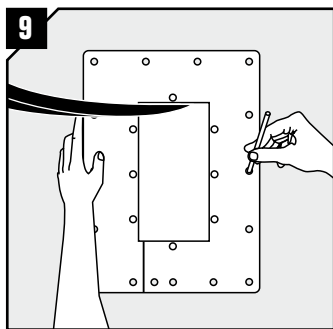
Cut off approx. 10 cm of sealing strip and press it down the cut to seal the flange.



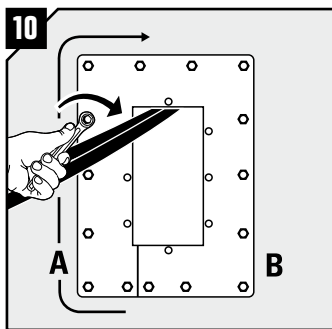
Use glue (not included in the kit) on the cut ends to recover the sealing strip.



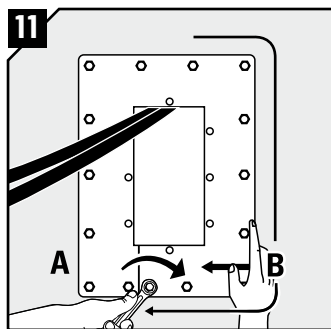
Recover the sealing strip by changing the direction of the sealing strip back to its original gapless position.



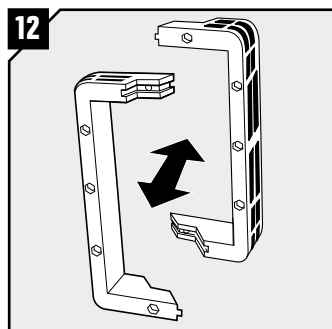
Use the flange to mark where to drill the holes for the flange. Drill the holes.



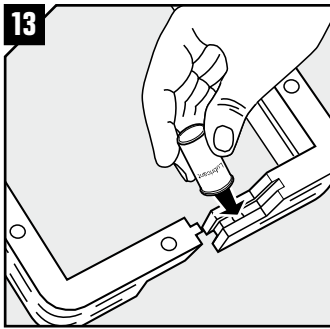
Fasten the bolts on side A.



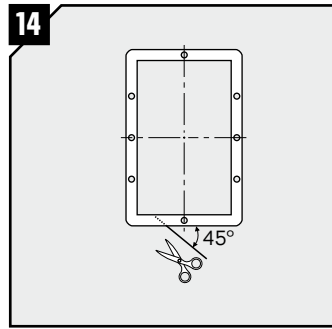
When fastening the bolts on side B, compress the sealing strip in the cut by forcing side B against side A.



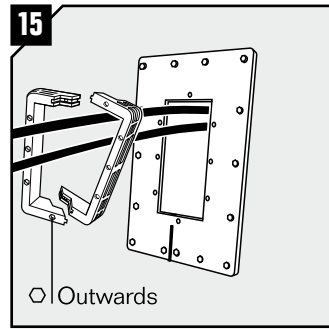
Divide the frame into two frame parts.



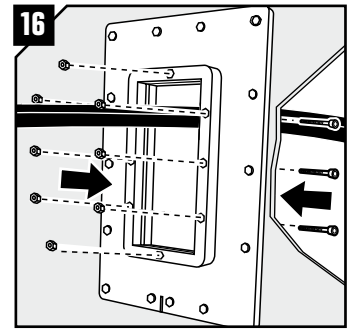
Lubricate all end surfaces of the frame parts.



Cut the gasket according to the picture.

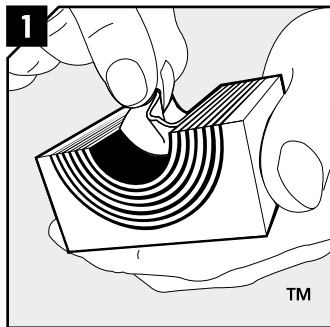


Reconnect the frame parts around the cables. Remove the protection foil from the gasket and apply it onto the frame side facing the flange. Recessed bolt holes must point outwards, away from the flange.

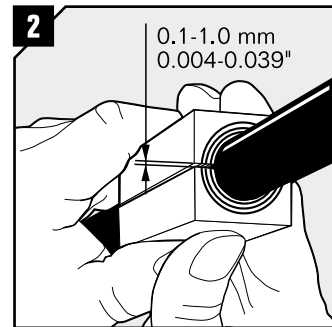


Insert the nuts and bolts. Tighten 7 Nm. Continue to module installation.

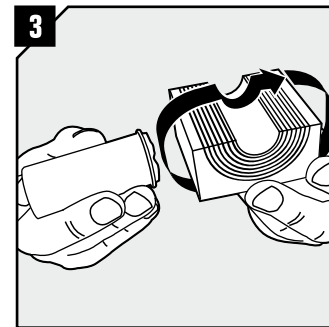
Module installation



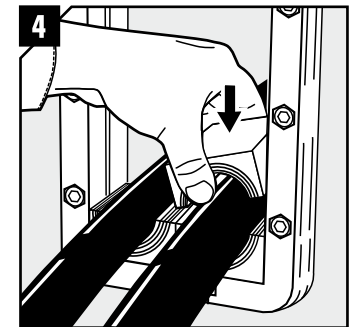
Adapt modules, which are to hold cables or pipes, by peeling off layers until you reach the gap seen in pic. 2. The halves may not differ by more than one layer.



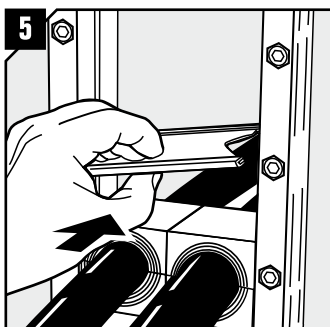
Achieve a 0.1-1.0 mm gap between the two halves when held against the cable/pipe.



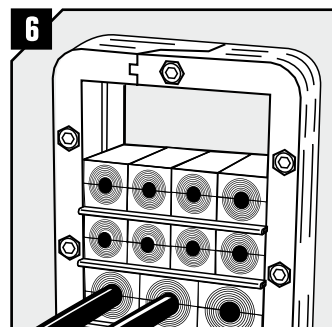
Lubricate all modules for the frame thoroughly, both the inside and the outside surfaces.



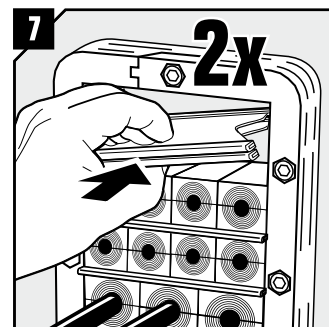
Insert the modules according to your installation plan (transit plan). It is recommended to seal cables/pipes at the bottom of the frame and put spare modules on top.



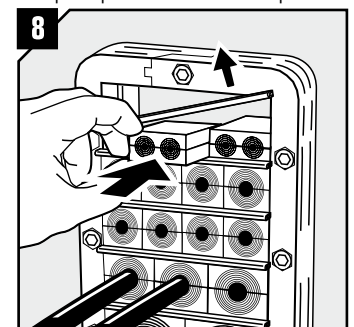
Insert a stayplate on top of every finished row of modules.



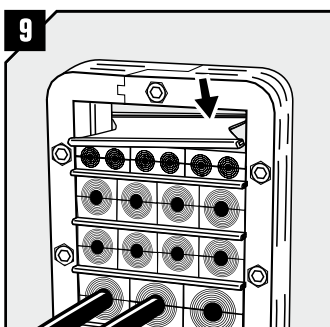
Continue to fill up the packing space of the frame, until one final row is left. See pictures "Packing space" for the full size of the space.



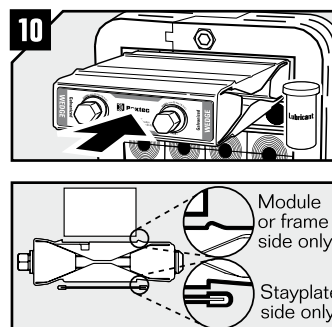
Before inserting the final row of modules, insert two stayplates.



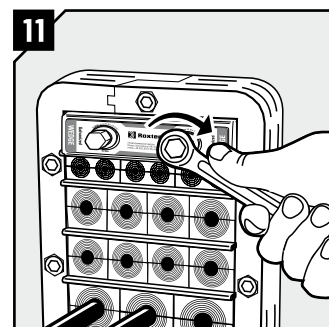
Separate the two stayplates and insert the final row of modules between the stayplates.



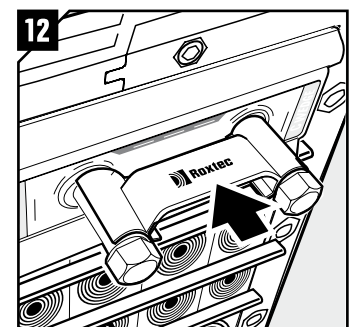
Drop the upper stayplate on top of the modules.



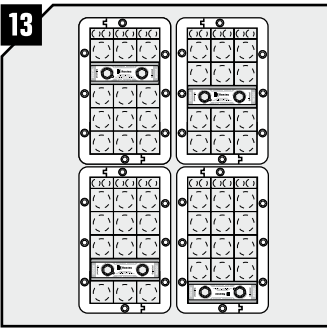
Lubricate all sides of the wedge sparsely, except front and back. Please read the markings on the wedge and turn it correctly before inserting it in the top of the frame (standard position). Face with "Stayplate this side" must always face a stayplate.



Tighten the screws until full stop, approx 20 Nm (15 ft.lb.).



Attach the Wedge Clip to the wedge bolts to check that the wedge is properly tightened.



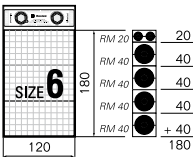
Optional wedge positions
(anywhere within the frame).

Disassembly

Reverse order

Packing space

Frame size 6 accommodates the following height of modules: 180 mm. As example shows for frame size 6, the 180 mm can be the result of 4 rows of RM 40 plus one row of RM 20w40.



Note

- For optimum reliability, wait 24 hours or longer after installation before exposing the cables/pipes to strain or pressure.
- Optional wedge positions. The wedge can be placed anywhere in the frame.
- To be used with RM components.
- Cables/pipes shall go perpendicularly through the frame.

DISCLAIMER

"The Roxtec cable entry sealing system ("the Roxtec system") is a modular-based system of sealing products consisting of different components. Each and every one of the components is necessary for the best performance of the Roxtec system. The Roxtec system has been certified to resist a number of different hazards. Any such certification, and the ability of the Roxtec system to resist such hazards, is dependent on all components that are installed as a part of the Roxtec system. Thus, the certification is not valid and does not apply unless all components installed as part of the Roxtec system are manufactured by or under license from Roxtec ("authorized manufacturer"). Roxtec gives no performance guarantee with respect to the Roxtec system, unless (I) all components installed as part of the Roxtec system are manufactured by an authorized manufacturer and (II) the purchaser is in compliance with (a), and (b), below.

(a) During storage, the Roxtec system or part thereof, shall be kept indoors in its original packaging at a temperature not exceeding +70°C/+158°F and not below -40°C/-40°F.

(b) Installation shall be carried out in accordance with Roxtec installation instructions in effect from time to time.

The product information provided by Roxtec does not release the purchaser of the Roxtec system, or part thereof, from the obligation to independently determine the suitability of the products for the intended process, installation and/or use.

Roxtec gives no guarantee for the Roxtec system or any part thereof and assumes no liability for any loss or damage whatsoever, whether direct, indirect, consequential, loss of profit or otherwise, occurred or caused by the Roxtec systems or installations containing components not manufactured by an authorized manufacturer.

Roxtec expressly excludes any implied warranties of merchantability and fitness for a particular purpose and all other express or implied representations and warranties provided by statute or common law. User determines suitability of the Roxtec system for intended use and assumes all risk and liability in connection therewith. In no event shall Roxtec be liable for consequential, punitive, special, exemplary or incidental damages."



Roxtec International AB
Box 540, 371 23 Karlskrona, SWEDEN
PHONE +46 455 36 67 00, FAX +46 455 820 12
EMAIL info@roxtec.com, www.roxtec.com