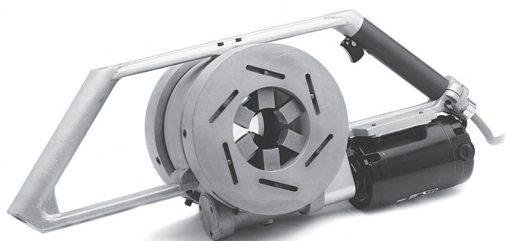




WS 51A

Adjustable Transmission Cable Semi-con Shield Removal



- For solid dielectric transmission cables
- Primarily for cable manufacturers' in-factory use, where different size cables are being used frequently
- Continuously adjustable "chuck-like" clamp locks over the cable with two sets of removable jaws
 - Jaw set A – 1.815 to 3.065 in (46.10 to 77.85 mm) cable O.D.
 - Jaw set B – 2.875 to 4.125 in (73.03 to 104.78 mm) cable O.D.
- Jaws are interchangeable
- Removes semi-con insulation at a rate of 25 inches (635 mm) per minute
- Perfect for preparing long lengths for in-factory cable testing
- 115VAC or 230VAC operation
- Made in the U.S.A.
- Replacement blade: CB 40X-5 (Part No.: 22102)
- Length: 27 in (686 mm)
- Height: 10 in (254 mm)
- Weight: 37 lbs (16.8 Kg)
- WS 51A 115 VAC Part No.: 22100
- WS 51A 230 VAC Part No.: 22140



SECONDARY DIST.

PRIMARY DIST. (OH)

PRIMARY DIST. (URD)

SPECIALTY DIST.

TRANSMISSION