

The MF wedge end fixing facilitates quick and efficient suspension from Composite Metal Flooring (CMF) Met-floor 60 and Met-floor 80 decking profiles.

## ADVANTAGE

- MF wedge is the only fixing product recommended by the decking manufacturer (CMF)
- No need for power tools or to drill
- Maintains the structural integrity of the decking
- Height is adjusted easily using the Gripple
- Can be used to suspend a variety of mechanical and electrical services

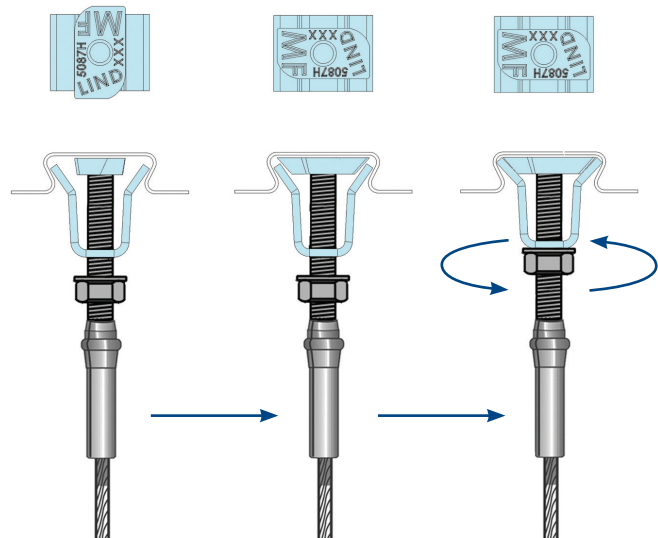
## PRODUCT INFORMATION

- Load rated at 90kg, with a 3:1 safety factor
- Sold as a kit in Gripple sizes No.2 and No.3
- The wedge nut must be locked in place using a nut and washer, or similar locking method to secure the installation
- The MF Wedge should not be used in profiles manufactured by Kingspan Strucutral Products

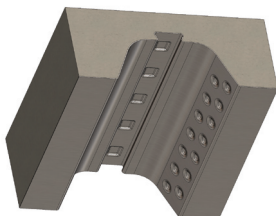


## INSTALLATION

- 1) Insert wedge nut and plate into decking channel
- 2) Rotate the wedge nut 90° to lock in place
- 3) Tighten the flange nut up to the surface of the plate to secure the installation



CMF



METFLOOR 60  
METFLOOR 80



## IMPORTANT INFORMATION

1. Construction materials and conditions vary on different sites. If it is suspected that the base material has insufficient strength to achieve a suitable fixing, contact Gripple Ltd. The responsibility for judgement of base material strength lies with the installer, and not with Gripple Ltd.
2. The information and recommendations given herein are believed to be correct at time of writing. The data has been obtained from tests done under laboratory, or other controlled conditions and it is the users responsibility to use the data given in light of conditions on site, taking account of the intended use of the products concerned.
3. Whilst Gripple Ltd can give general guidance and advice, the nature of Gripple products means that the ultimate responsibility for selecting the correct product for a particular application must lie with the customer.
4. All products must be used, handled and applied in accordance with current product instructions and manufacturers recommendations for use, published by Gripple Ltd.
5. Gripple's policy is one of continuous development and innovation. We therefore reserve the right to alter specifications, etc. without notice.

CABLE JOINTS, CABLE TERMINATIONS, CABLE GLANDS, CABLE CLEATS  
FEEDER PILLARS, FUSE LINKS, ARC FLASH, CABLE ROLLERS, CUT-OUTS

11KV 33KV CABLE JOINTS & CABLE TERMINATIONS  
FURSE EARTHING  
www.cablejoints.co.uk  
Thorne and Derrick UK

Tel 0044 191 490 1547 Fax 0044 191 477 5371  
Tel 0044 117 977 4647 Fax 0044 117 9775582

com

PI-33-ENG