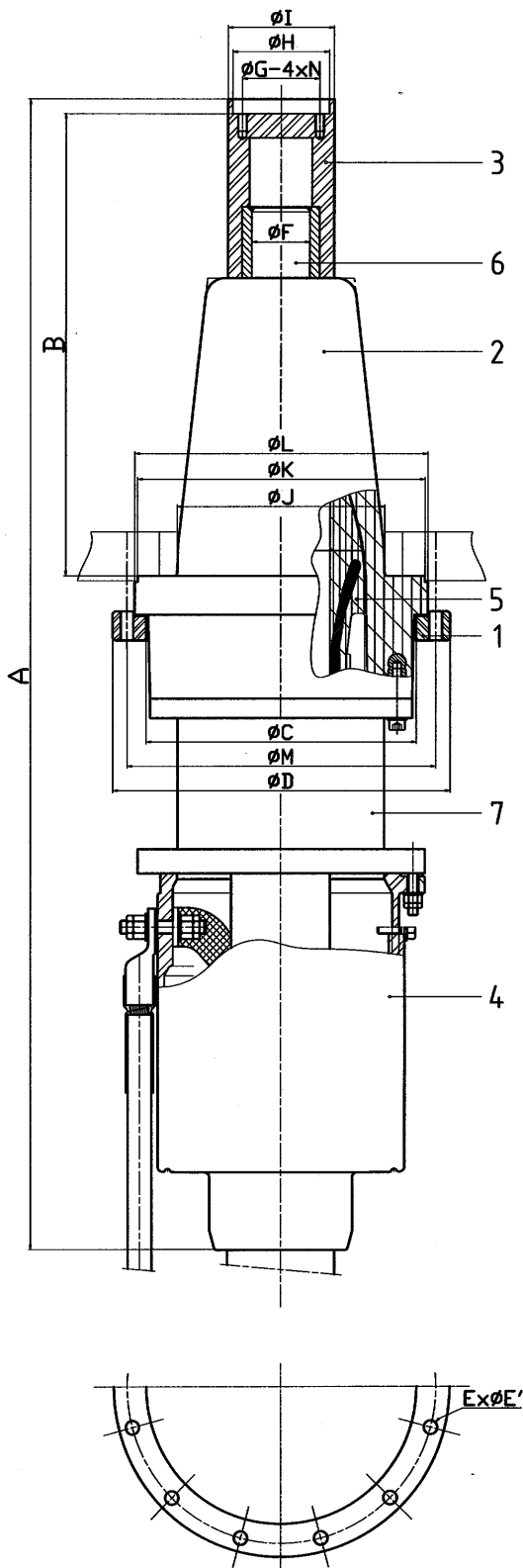


# Dry type Transformer sealing end

for synthetic insulated cables

DTT 1.72-11/0 – 72 kV



## Technical characteristics

### Electrical :

- Max. operating voltage	[kV]	72.5
- Impulse voltage strength		
1.2/50 µs	[kV]	325

### Mechanical :

- Cross section	[mm <sup>2</sup> ]	240-1'600
- ø min./max. over insulation	[mm]	40-80
- Total weight	[kg]	50

### Main dimensions :

- A	[mm]	1000
- B	[mm]	310
- ø C	[mm]	-
- ø D	[mm]	300
- Ex ø E	[mm]	8x12
- ø F	[mm]	-
- ø G	[mm]	80
- ø H	[mm]	100
- ø I	[mm]	110
- ø J	[mm]	196
- ø K	[mm]	245
- ø L	[mm]	-
- ø M	[mm]	270
- N	[mm]	4xM10

## Main parts

Item	Name of part	Material
1	Fixing flange	Aluminium
2	Insulator	Epoxy
3	Top cover	Aluminium
4	Introduction gland	Aluminium
5	Stress relief cone	Elastomer
6	Connector	Copper
7	Intermediate part	Aluminium

## Notes :

Interface according to IEC60859 for dry type cable termination  
According to IEC60840



WWW.CABLEJOINTS.CO.UK  
**THORNE & DERRICK UK**  
 TEL 0044 191 490 1547 FAX 0044 477 5371  
 TEL 0044 117 977 4647 FAX 0044 977 5582  
 WWW.THORNEANDDERRICK.CO.UK