

## Cable Clip - 'Twist & Lock' Metro Self-Locking LSF 550 series For use with GRP / metal framing channel (Strut), slotted cable tray & direct fixing to substrate surface



### The Metro LSF 550 Cable, Conduit & Pipe Clip

is supplied with optional 'slot' adaptors to enable mounting directly to 'strut' type GRP / metal framing systems & slotted cable tray; or may be installed by direct fixing to the substrate surface by expansion bolt or chemical anchor bolt fixings

### Safely secures Cables / Conduit / Wiring Ducts / Pipe work & Tubes whilst allowing for carrier flexing

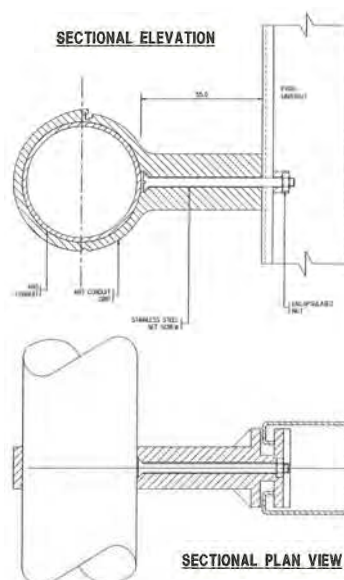
- ◆ Compliant with London Underground standard 'Fire Safety Performance of Materials' Ref No. 1-085
- ◆ Simple 'Twist & Lock' installation on GRP / metal framing channel systems and slotted cable tray **or** Bolt-on / 'Chemical Anchor Bolt' installation
- ◆ Serviceable to 330 Deg. C
- ◆ Strong durable one-piece construction
- ◆ No 'burrs' to snag or damage cables
- ◆ 40 Year effective life
- ◆ Available in various sizes
- ◆ Suitable for use with Low Smoke Zero Halogen cables
- ◆ Enables the unrestricted path of radio signal (RF) cable propagation signalling systems

#### Material:

- High Strength smooth surface LS0H thermoplastic resin
- Excellent electrical and thermal insulator with high dielectric strength and arc quenching
- Corrosion free stable - not subject to attack by weather, chemical or biological agents
- Dimensionally stable material with no directional 'grain' weakness

#### Product:

- Manufactured to tight tolerances
- Standard product colouring in Grey / Black - other colours available to special order



Please 'Contact Us' for details of our LS0H range of GRP 'strut' framing channel & Cable trays