



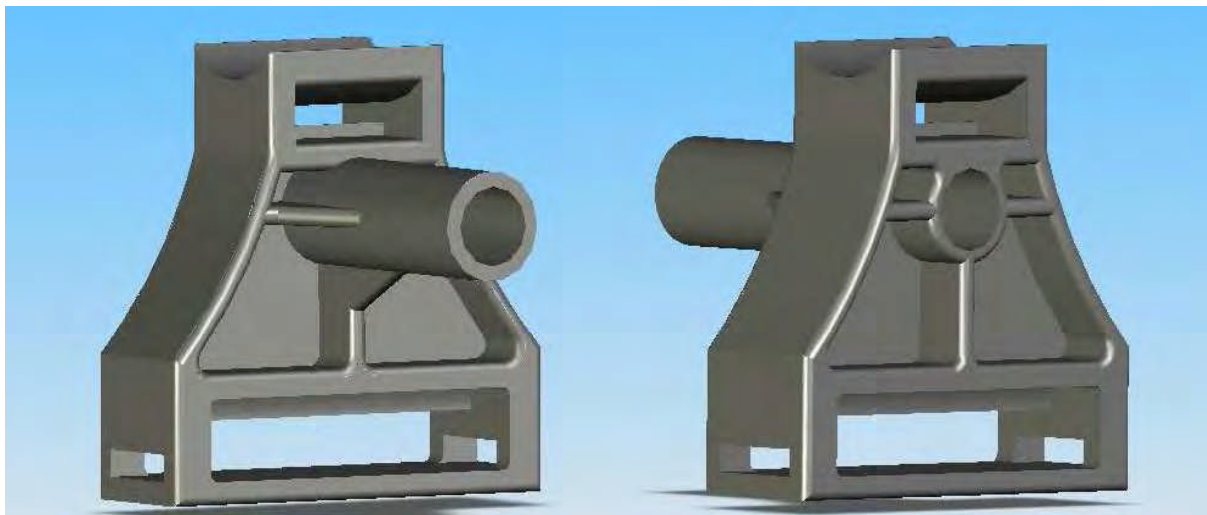
MELCROFT



CABLE JOINTS, CABLE TERMINATIONS, CABLE GLANDS, CABLE CLEATS
FEEDER PILLARS, FUSE LINKS, ARC FLASH, CABLE ROLLERS, CUT-OUTS

11KV 33KV CABLE JOINTS & CABLE TERMINATIONS
FURSE EARTHING
www.cablejoints.co.uk
Thorne and Derrick UK
Tel 0044 191 490 1547 Fax 0044 191 477 5371
Tel 0044 117 977 4647 Fax 0044 117 977 5582

Cable Clamp - Metro LSF950 series With multi-channel connector base fixing & one zip strap cable fastener and 50mm standard Spacer Bar



The Metro LSF950 Cable Clamp

is specifically designed to exceed the safety critical requirements of London Underground Ltd and to provide a secure, reliable cable fixing method in the most demanding, hostile and hazardous environments.

- ◆ London Underground 'Fire Safety Performance of Materials' compliant - Standard No. 1-085 (formerly Ref. 2-01001-002)
- ◆ Fast, efficient & simple 'Push-On' installation when used with the LUL 'J' Hanger cable support system
- ◆ Serviceable -40 to +323°C
- ◆ Strong durable construction
- ◆ No 'burrs' to snag or damage cables
- ◆ 40 Year effective life
- ◆ Less than 0.1% water absorption
- ◆ Suitable for use with LSOH cable (Low Smoke Zero Halogen)
- ◆ Standard size product accepts cable diameters of between 13 - 50mm
- ◆ Enables the unrestricted path of radio signal (RF) cable propagation signalling systems



Material:

- High Strength smooth surface thermoplastic resin
- Excellent electrical and thermal insulator with high dielectric strength and arc quenching
- Corrosion free stable - not subject to attack by weather, chemical or biological agents
- Dimensionally stable material with no directional 'grain' weakness

Product:

- Manufactured to tight tolerances
- Standard product colouring in Grey / Black - other colours available to special order