



MELCROFT



CABLE JOINTS, CABLE TERMINATIONS, CABLE GLANDS, CABLE CLEATS,
FEEDER PILLARS, FUSE LINKS, ARC FLASH, CABLE ROLLERS, CUT-OUTS

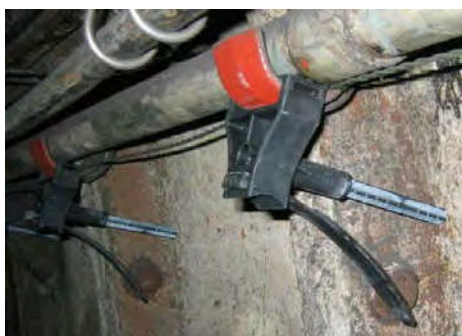
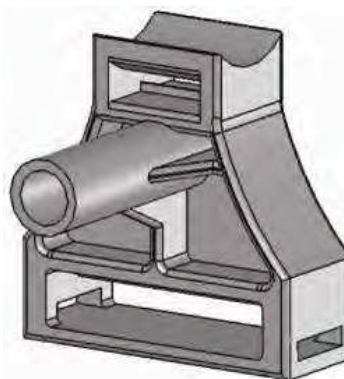
11KV 33KV CABLE JOINTS & CABLE TERMINATIONS
FURSE EARTHING
www.cablejoints.co.uk
Thorne and Derrick UK

Tel 0044 191 490 1547 Fax 0044 191 477 5371
Tel 0044 117 977 4647 Fax 0044 117 977 5582

Cable Clamp - Metro LSF216-MR-V4 series With dual-channelled connector base, locking zip-strap & optional length adjustable Metro Stand-off Rod



The Metro LSF216-MR-V4 Cable Clamp is specifically designed to exceed the safety critical requirements of London Underground Ltd and to provide a secure, reliable cable fixing method in the most demanding, hostile and hazardous environments.



- ◆ London Underground 'Fire Safety Performance of Materials' compliant - Standard No. 1-085
- ◆ Fast, efficient & simple 'Push-On' installation when used with the LUL 'J' Hanger cable support system
- ◆ Serviceable -40 to +323°C
- ◆ Strong durable construction
- ◆ No 'burrs' to snag or damage cables
- ◆ 40 Year effective life
- ◆ Less than 0.1% water absorption
- ◆ Suitable for use with LSOH cable (Low Smoke Zero Halogen)
- ◆ Enables the unrestricted path of radio signal (RF) cable propagation signalling systems
- ◆ Standard size product accepts cable diameters of between 13 - 50mm

Material:

- High Strength smooth surface thermoplastic resin
- Excellent electrical and thermal insulator with high dielectric strength and arc quenching
- Corrosion free stable - not subject to attack by weather, chemical or biological agents
- Dimensionally stable material with no directional 'grain' weakness

Product:

- Manufactured to tight tolerances
- Standard product colouring in Grey / Black - other colours available to special order