



MELCROFT



CABLE JOINTS, CABLE TERMINATIONS, CABLE GLANDS, CABLE CLEATS  
FEEDER PILLARS, FUSE LINKS, ARC FLASH, CABLE ROLLERS, CUT-OUTS

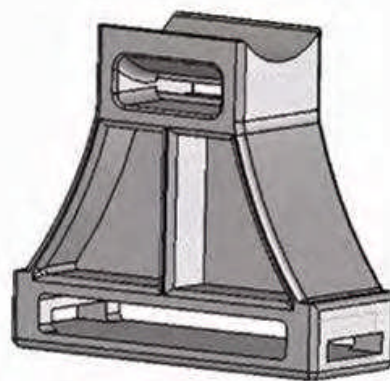
11KV 33KV CABLE JOINTS & CABLE TERMINATIONS  
FURSE EARTHING  
www.cablejoints.co.uk  
Thorne and Derrick UK  
Tel 0044 191 490 1547 Fax 0044 191 477 5371  
Tel 0044 117 977 4847 Fax 0044 117 977 5582

## Cable Clamp - Metro LSF216-MR-V3 series With dual-channelled connector base & locking zip-strap



The **Metro Clamp LSF216-MR-V3 cable clamp** is specifically designed to exceed the safety critical requirements of London Underground Ltd and to provide a secure reliable cable fixing method in the most demanding, hostile & hazardous environments.

- ◆ London Underground 'Fire Safety Performance of Materials' compliant - Standard Ref. Number 1-085 (formerly Ref. 2-01001-002)
- ◆ Fast, efficient & simple 'Push-On' installation when used with the LUL 'J' Hanger cable support system
- ◆ Serviceable  $-40$  to  $+323^{\circ}\text{C}$
- ◆ Strong durable construction
- ◆ No 'burrs' to snag or damage cables
- ◆ 40 Year effective life
- ◆ Less than 0.1% water absorption
- ◆ Suitable for use with LSOH cable (Low Smoke Zero Halogen)
- ◆ Enables the unrestricted path of radio signal (RF) cable propagation signalling systems
- ◆ Standard size product accepts cable diameters of between 13 - 50mm



### Material:

- High Strength smooth surface thermoplastic resin
- Excellent electrical and thermal insulator with high dielectric strength and arc quenching
- Corrosion free stable - not subject to attack by weather, chemical or biological agents
- Dimensionally stable material with no directional 'grain' weakness

### Product:

- Manufactured to tight tolerances
- Standard product colouring in Grey / Black - other colours available to special order