



MBT Range of Stainless Steel Cable Ties

Features and Benefits

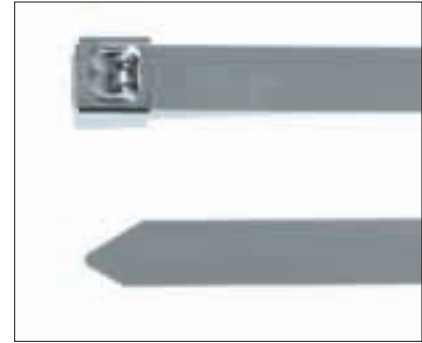
The MBT (Metal Ball bearing Ties) have a non-releasable locking mechanism that offers infinite adjustment along the length of the tie. These ties are available in both 316 and 304 grades of stainless steel.

Application

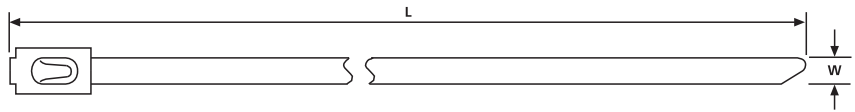
The MBT range of stainless steel ties are suitable for use in the most arduous conditions or where additional security, strength, fire resistance and chemical resistance properties. Used in all industries – from mass transit, ship building, oil rigs, mining, chemical industries and many more.



MBTS, MBTH



MBTXH



MBTS, MBTH

Technical Table

Article-No.	Type	Length (L)	Width (W)	Bundle Ø max.	Min. Tensile Strength (N)	Material	Application Tool
Material Type SS304							
111-93058	MBT5SS	127	4.6	25.0	670	SS304	MK9SST
111-93088	MBT8SS	201	4.6	50.0	670	SS304	MK9SST
111-93148	MBT14SS	362	4.6	102	670	SS304	MK9SST
111-93208	MBT20SS	521	4.6	152	670	SS304	MK9SST
111-93278	MBT27SS	681	4.6	203	670	SS304	MK9SST
111-93338	MBT33SS	838	4.6	254	670	SS304	MK9SST
111-94088	MBT8HS	201	7.9	50.0	1115	SS304	MK9SST
111-94148	MBT14HS	362	7.9	102	1115	SS304	MK9SST
111-94208	MBT20HS	521	7.9	152	1115	SS304	MK9SST
111-94278	MBT27HS	681	7.9	203	1115	SS304	MK9SST
111-94338	MBT33HS	838	7.9	254	1115	SS304	MK9SST
111-95148	MBT14XHS	362	12.3	107	2225	SS304	MK9SST
111-95208	MBT20XHS	521	12.3	152	2225	SS304	MK9SST
111-95278	MBT27XHS	681	12.3	203	2225	SS304	MK9SST
111-95338	MBT33XHS	838	12.3	254	2225	SS304	MK9SST
Material Type SS316							
111-93059	MBT5S	127	4.6	25.0	670	SS316	MK9SST
111-93089	MBT8S	201	4.6	50.0	670	SS316	MK9SST
111-93149	MBT14S	362	4.6	102	670	SS316	MK9SST
111-93209	MBT20S	521	4.6	152	670	SS316	MK9SST
111-93279	MBT27S	681	4.6	203	670	SS316	MK9SST
111-93339	MBT33S	838	4.6	254	670	SS316	MK9SST
111-94089	MBT8H	201	7.9	50.0	1115	SS316	MK9SST
111-94149	MBT14H	362	7.9	102	1115	SS316	MK9SST
111-94209	MBT20H	521	7.9	152	1115	SS316	MK9SST
111-94279	MBT27H	681	7.9	203	1115	SS316	MK9SST
111-94339	MBT33H	838	7.9	254	1115	SS316	MK9SST
111-95149	MBT14XH	362	12.3	102	2225	SS316	MK9SST
111-95209	MBT20XH	521	12.3	152	2225	SS316	MK9SST
111-95279	MBT27XH	681	12.3	203	2225	SS316	MK9SST
111-95339	MBT33XH	838	12.3	254	2225	SS316	MK9SST

All dimensions in mm. Subject to technical changes.



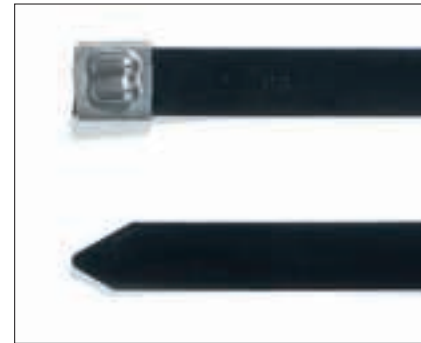
Please Note for Product Specific Approvals please refer to the Appendix



MBT Range of Stainless Steel Cable Ties

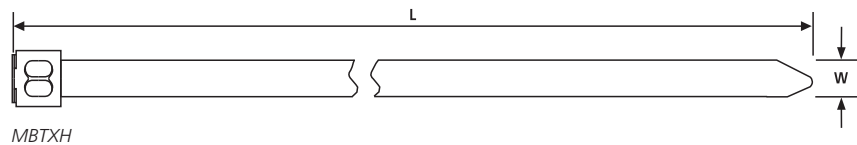


MBTS, MBTH



MBTXH

Material specification
see page 83.



MBTXH

Technical Table

Article-No.	Type	Length (L)	Width (W)	Bundle Ø max.	Min. Tensile Strength (N)	Material	Application Tool
MBT semi coated							
111-93057	MBT5SC	127	4.6	25.0	467	SS316, PA11	MK9SST
111-93087	MBT8SC	201	4.6	50.0	467	SS316, PA11	MK9SST
111-93147	MBT14SC	362	4.6	102	467	SS316, PA11	MK9SST
111-93207	MBT20SC	521	4.6	152	467	SS316, PA11	MK9SST
111-93277	MBT27SC	681	4.6	203	467	SS316, PA11	MK9SST
111-93337	MBT33SC	838	4.6	254	467	SS316, PA11	MK9SST
111-94087	MBT8HC	201	7.9	50.0	779	SS316, PA11	MK9SST
111-94147	MBT14HC	362	7.9	102	779	SS316, PA11	MK9SST
111-94207	MBT20HC	521	7.9	152	779	SS316, PA11	MK9SST
111-94277	MBT27HC	681	7.9	203	779	SS316, PA11	MK9SST
111-94337	MBT33HC	838	7.9	254	779	SS316, PA11	MK9SST
111-95147	MBT14XHC	362	12.3	107	1558	SS316, PA11	MK9SST
111-95207	MBT20XHC	521	12.3	150	1558	SS316, PA11	MK9SST
111-95277	MBT27XHC	681	12.3	203	1558	SS316, PA11	MK9SST
111-95336	MBT33XHC	838	12.3	254	1558	SS316, PA11	MK9SST
MBT Fully Coated							
111-00288	MBT5SFC	127	4.6	25.0	467	SS316, SP	MK9SST
111-00289	MBT8SFC	201	4.6	50.0	467	SS316, SP	MK9SST
111-00290	MBT14SFC	362	4.6	102	467	SS316, SP	MK9SST
111-00291	MBT20SFC	521	4.6	152	467	SS316, SP	MK9SST
111-00292	MBT27SFC	681	4.6	203	467	SS316, SP	MK9SST
111-00293	MBT33SFC	838	4.6	254	467	SS316, SP	MK9SST
111-00294	MBT8HFC	201	7.9	50.0	779	SS316, SP	MK9SST
111-00295	MBT14HFC	362	7.9	102	779	SS316, SP	MK9SST
111-00296	MBT20HFC	521	7.9	152	779	SS316, SP	MK9SST
111-00297	MBT27HFC	681	7.9	203	779	SS316, SP	MK9SST
111-00298	MBT33HFC	838	7.9	254	779	SS316, SP	MK9SST
111-00299	MBT14XHFC	362	12.3	107	1558	SS316, SP	MK9SST
111-00300	MBT20XHFC	521	12.3	150	1558	SS316, SP	MK9SST
111-00301	MBT27XHFC	681	12.3	203	1558	SS316, SP	MK9SST
111-00302	MBT33XHFC	838	12.3	254	1558	SS316, SP	MK9SST

All dimensions in mm. Subject to technical changes.