



Street **lighting** equipment



CABLE JOINTS, CABLE TERMINATIONS, CABLE GLANDS, CABLE CLEATS
FEEDER PILLARS, FUSE LINKS, ARC FLASH, CABLE ROLLERS, CUT-OUTS

11KV 33KV CABLE JOINTS & CABLE TERMINATIONS
FURSE EARTHING
www.cablejoints.co.uk
Thorne and Derrick UK

Tel 0044 191 490 1547 Fax 0044 191 477 5371
Tel 0044 117 977 4647 Fax 0044 117 9775582



contents

Street Lighting Cutouts and Isolators

Trojan Range	1
Trojan Mini Isolator	2
Trojan Midi Isolator	4
Trojan Maxi Isolator	6
Trojan Festive Lighting	8
Trojan Trough	9
Titan2 Range	10
Titan2 Trough	14
Titan2 Schematic diagrams	15
MC040SLF - Single Phase Fuse Unit	16

Feeder Pillars

Fortress Range	17
Fortress Mini Pillar	18
Fortress Range Single Door Pillars	20
Fortress Range Double Door Pillars	24
Heritage Range Cast Iron Service Pillars	24
Pre-wired Fortress & Hy-Cast Pillars	26
Special Pillars	27
Feeder Pillar Accessories	28
Primary Connection Products	29



CABLE JOINTS, CABLE TERMINATIONS, CABLE GLANDS, CABLE CLEATS
FEEDER PILLARS, FUSE LINKS, ARC FLASH, CABLE ROLLERS, CUT-OUTS

11KV 33KV CABLE JOINTS & CABLE TERMINATIONS
FURSE EARTHING
www.cablejoints.co.uk
Thorne and Derrick UK
Tel 0044 191 490 1547 Fax 0044 191 477 5371
Tel 0044 117 977 4647 Fax 0044 117 9775582

Trojan range



BSTS NEWCASTLE
APPROVED
PASSED & APPROVED

The new slimline Trojan Range has been redeveloped with a brand new innovative style which has been designed to satisfy all applications requiring double pole isolation. Lucy Lighting has also introduced a 3 way Trojan Midi to complement the existing Isolator Range, along with the Mini and Maxi. In doing this the Trojan Isolator portfolio now includes a 2, 3 and 4 way Modular System creating a family of products.

Specification

Kema approved 32A Double Pole switched isolator
IEC 947-3, BSEN 60947- Part 3 fuse holder

Interlock safety slider allowing the unit to be locked in the 'OFF' position

Kema approved fuseholder

Clear lockable hinged lid showing the 'ON/OFF' position

MD or LD fuses supplied fitted or separate see over for ordering table

Din rail

High grade flame retardant ABS

Extension trough available for larger cables

Tails

BSTS tested and approved

Trojan Mini Isolator

Incorporating a switch, fuses or MCB's with unique safety interlock

BSTS NEWCASTLE
APPROVED
PASSED & APPROVED

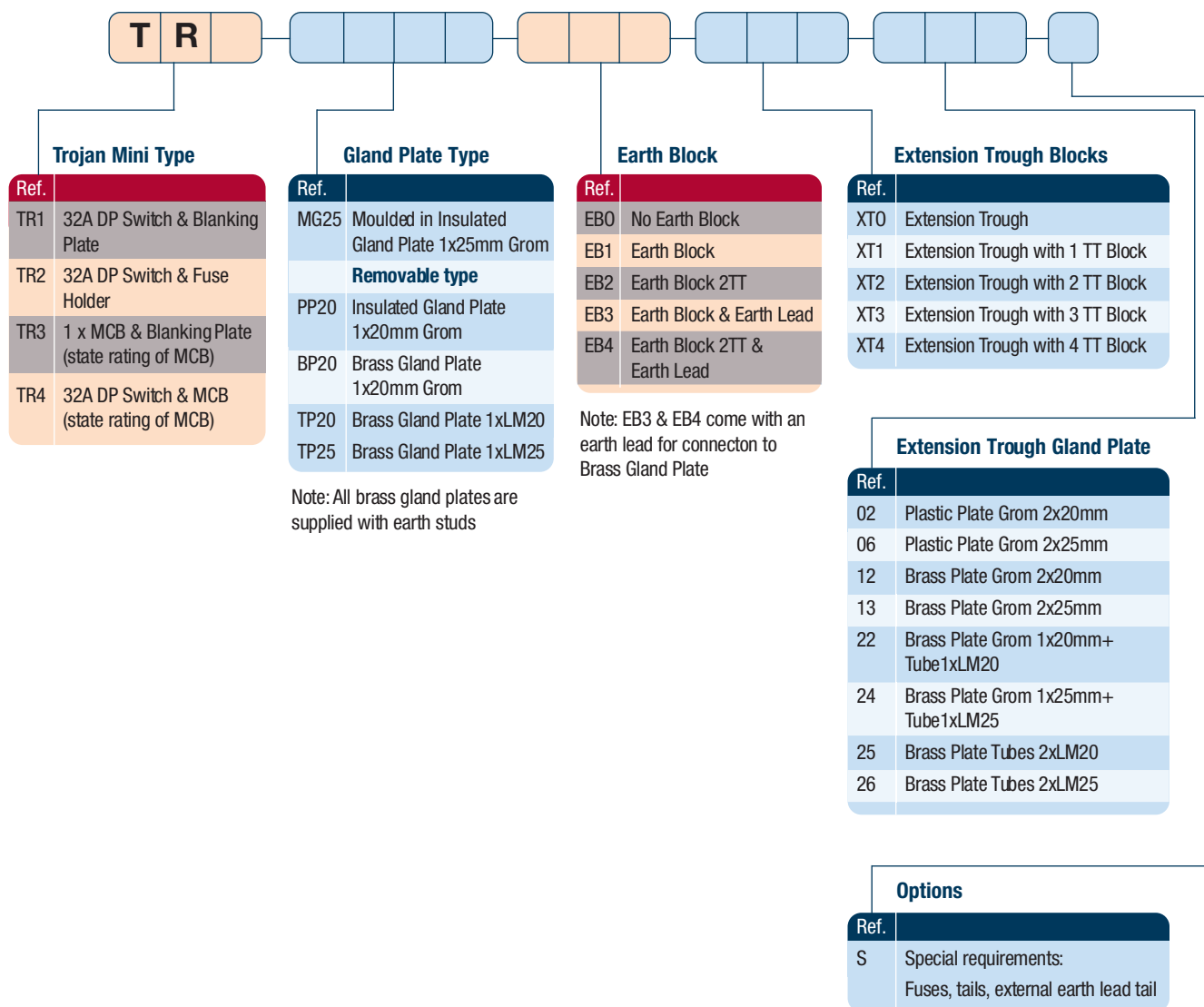


Built with ease of installation in mind, the new slimline Trojan Mini double pole lockable isolator offers maximum benefits to both contractors and local authorities.

The new Mini isolator has been specifically redesigned to improve cable access and suit various types of termination and cable. The Trojan Mini unit can also be supplied pre-wired with connection leads to reduce on site installation time.

Trojan Mini

Height 170mm Width
59.5mm Depth 83mm



Specification

Kema approved 32A Double Pole switched isolator IEC 947-3, BSEN 60947- Part 3

High grade flame retardant ABS

Fuse holder tested in accordance with the requirements of BS88 Part 1 and IEC 269. Kema approved

Clear lockable hinged lid showing the 'ON/OFF' position

Interlock safety slider allowing the unit to be locked in the 'OFF' position

IP 33D rating

MD or LD fuses supplied fitted or separate

BSTS tested and approved to BS88 Part 1 and IEC

Extension trough available for larger cables

Trojan Midi Isolator

3 Way Modular System incorporating a switch, fuse or MCB's

Trojan Midi
Height 160mm
Width 78mm Depth 80.5mm



BSTS NEWCASTLE
APPROVED
PASSED & APPROVED

Specification

Kema approved 32A Double Pole switched isolator IEC 947-3, BSEN 60947- Part 3

High grade flame retardant ABS

Fuse holder tested in accordance with the requirements of BS88 Part 1 and IEC 269
Kema approved

Clear lockable hinged lid showing the 'ON/OFF' position

Interlock safety slider allowing the unit to be locked in the 'OFF' position

IP 43 rating

MD or LD fuses supplied fitted or separate

BSTS tested and approved to BS88 Part 1 & IEC

Extension trough available for larger cables

The new Trojan Midi is the third instalment in the Trojan Isolator portfolio along with the Mini and the Maxi. It offers a 3 modular variation to allow for example, a two lantern supply or one lantern and a sign. The Trojan Midi can be pre-wired by Lucy Lighting for ease of installation.



Trojan Midi

Ref.	
01	32A DP Switch + 2 Blanking Plates
02	32A DP Switch + 1 BS88 Fuse Holder+1 Blanking Plate
03	32A DP Switch + 2 x BS88 Fuse Holders
04	32A DP Switch + 1 BS88 Fuse Holder+ 1 x MCB (State Rating of MCB)
05	32A DP Switch + 2 MCB's (State Rating of MCB)

Ref.	
N0	No Neutral Block
N1	Neutral Block
EB0	No Earth Block
EB1	Earth Block
EB2	Earth Block 2TT
EB2N1	Earth Block 2TT & Neutral
EB3*	Earth Block and Earth Lead
EB4*	Earth Block 2TT and Earth Lead

*Note

Using EB3 and EB4 requires the use of ED Extension Trough

Extension Trough Mouldings

Ref.	
EX	No Extension Trough
EA	Large Moulding Ref EA (triple entry)
EB	Smaller Moulding Ref EB (triple entry)
EC	Extra Long Extension (triple entry) Trough Ref EA+EB=EC
ED	Red Extension Trough ED (double entry)
EE	Adapter Trough EE (triple entry)
EF	Mini Extension Trough EF (double entry)

Note: Selection EB, cannot be used on its own.

Terminal Block for Extension Trough

Ref.	
TX	Not Required

For use with Extension Trough EA only

Ref.	
T2	2 x 2TT 25SQ Blocks = L+N
T3	3 x 2TT 25SQ Blocks = L+N+E
T4	4 x STUDS = TP+N

For use with Extension Trough ED only

Ref.	
2T2	2 x 2TT 25sq Blocks = L+N
2T3	3 x 2TT 25sq Blocks = L+N+E
2T4	5 x 2TT 25sq Blocks = 3 Phase+N+E
2T5	5 x 2TT 25sq Blocks = L+N+E+(L+Nspur)
3T2	2 x 3TT 25sq Blocks = L+N
3T3	3 x 3TT 25sq Blocks = L+N+E
3T4	5 x 3TT 25sq Blocks = 3 Phase+N+E
3T5	5 x 3TT 25sq Blocks = L+N+E+(L+Nspur)

Standard Trojan Midi Glandplate (Double Entry)

Ref.	
02	Plastic Plate GROM 2 X 20mm
04	Plastic Plate IPG13 Fitted + GROM
06	Plastic Plate GROM 2X25mm
12	Brass Plate GROM 2X20mm
13	Brass Plate GROM 2X25mm
14	Brass Plate GROM 1X20mm +1XBW20
15	Brass Plate GROM 1X25mm +1XBW25
16	Brass Plate 1XPG13 +1XBW20
17	Brass Plate GROM 1XPG13+1XBW20
18	Brass Plate 2XBW20
22	Brass Plate GROM 1x20mm + Tube 1xLM20
24	Brass Plate GROM 1x25mm + Tube 1xLM25
25	Brass Plate Tubes 2xLM20
26	Brass Plate Tubes 2xLM25
32	Brass Plate 1xPG13 +1xBW25

Extension Trough Glandplate (Triple Entry)

Ref.	
51	Plastic Plate GROM 3x25mm
52	Brass Plate GROM 1x20mm + 2x25mm
53	Brass Plate GROM 3x25mm
54	Brass Plate GROM 1x25mm+2xBW25
55	Brass Plate 1xBW20 + 1xBW25
56	Brass Plate 3xBW25
60	Brass Plate GROM 1x20mm+2xLM25 Tubes
61	Brass Plate 3xLM25 Tubes
62	Brass Plate 1X20mm GROM + 2XLM32 Tubes
63	Brass Plate 1XLM20 TUBES+2XLM32 Tubes
64	Brass Plate 1XLM25 TUBE + 2XLM32 Tubes
65	Brass Plate 3x20mm BW GLANDS
66	Brass Plate GROM 2x25mm
67	Brass Plate 3XLM20 Tubes
68	Brass Plate GROM 3x20mm

Options

Ref.	
S	Special requirements: eg fuses, tails, external earth lead tails.

Trojan Maxi Isolator

4 Way Modular System

Trojan Maxi

Height 172mm Width
94mm Depth 84mm

BSTS NEWCASTLE
APPROVED
PASSED & APPROVED

Specification

Incoming gear tray

Interlock safety slider allowing the unit to be locked in the 'OFF' position

Din Rail

High grade fire retardent ABS

Clear lockable hinged lid showing the 'ON/OFF' position

Extension troughs available

Brass and plastic gland plates

4 Cable exit holes

MCB and timers

Tails

IP43 Rating

The new slimline Trojan Maxi is just the latest in a long line of products containing brilliant solutions.

Like the standard Trojan it is a Kema approved 32A double pole switched isolator IEC 947-3 and BSEN 60947- Part 3. The Trojan Maxi represents total flexibility for up to 4 DIN modules. These modules range from BS88 fuse units to sophisticated control units such as time clocks and complex festive lighting controls. As with the Trojan Mini and Midi the Maxi has also been fully independently tested.

Specification Sheet



Trojan Maxi

Ref.	
02	32A DP Switch + 2 BS88 Fuse Holder+1 Blanking Plate
03	32A DP Switch + 3 x BS88 Fuse Holders
12	32A DP Switch + 2 MCB (State Rating of MCB) + 1 Blanking Plate
13	32A DP Switch + 3 MCB's(State Rating of MCB)

Ref.	
N0	No Neutral Block
N1	Neutral Block
EB0	No Earth Block
EB1	Earth Block
EB2	Earth Block 2TT
EB2N1	Earth Block 2TT & Neutral
EB3*	Earth Block and Earth Lead
EB4*	Earth Block 2TT and Earth Lead

*Note

Using EB3 and EB4 requires the use of ED Extension Trough

Extension Trough Mouldings

Ref.	
EX	No Extension Trough
EA	Large Moulding Ref EA (triple entry)
EB	Smaller Moulding Ref EB (triple entry)
EC	Extra Long Extension (triple entry) Trough Ref EA+EB=EC
ED	Red Extension Trough ED (double entry)
EE	Adapter Trough EE (triple entry)
EF	Mini Extension Trough EF (double entry)

Note: Selection EB, cannot be used on its own.

Terminal Block for Extension Trough

Ref.	
TX	Not Required

For use with Extension Trough EA only

Ref.	
T2	2 x 2TT 25SQ Blocks = L+N
T3	3 x 2TT 25SQ Blocks = L+N+E
T4	4 x STUDS = TP+N

For use with Extension Trough ED only

Ref.	
2T2	2 x 2TT 25sq Blocks = L+N
2T3	3 x 2TT 25sq Blocks = L+N+E
2T4	5 x 2TT 25sq Blocks = 3 Phase+N+E
2T5	5 x 2TT 25sq Blocks = L+N+E+(L+N spur)
3T2	2 x 3TT 25sq Blocks = L+N
3T3	3 x 3TT 25sq Blocks = L+N+E
3T4	5 x 3TT 25sq Blocks = 3 Phase+N+E
3T5	5 x 3TT 25sq Blocks = L+N+E+(L+N spur)

Standard Trojan Maxi Glandplate (Double Entry)

Ref.	
02	Plastic Plate GROM 2 X 20mm
04	Plastic Plate IPG13 Fitted + GROM
06	Plastic Plate GROM 2X25mm
12	Brass Plate GROM 2X20mm
13	Brass Plate GROM 2X25mm
14	Brass Plate GROM 1X20mm +1XBW20
15	Brass Plate GROM 1X25 +1XBW25
16	Brass Plate 1XPG13 +1XBW20
17	Brass Plate GROM 1XPG13+1XBW20
18	Brass Plate 2XBW20
22	Brass Plate GROM 1x20mm + Tube 1xLM20
24	Brass Plate GROM 1x25mm + Tube 1xLM25
25	Brass Plate Tubes 2xLM20
26	Brass Plate Tubes 2xLM25
32	Brass Plate 1xPG13 +1XBW25

Extension Trough Glandplate (Triple Entry)

Ref.	
51	Plastic Plate GROM 3x25mm
52	Brass Plate GROM 1x20mm + 2x25mm
53	Brass Plate GROM 3x25mm
54	Brass Plate GROM 1x25mm+2xBW25
55	Brass Plate 1xBW20 + 1xBW25
56	Brass Plate 3xBW25
60	Brass Plate GROM 1x20mm+2xLM25 Tubes
61	Brass Plate 3xLM25 Tubes
62	Brass Plate 1X20mm GROM + 2XLM32 Tubes
63	Brass Plate 1XLM20 TUBES+2XLM32 Tubes
64	Brass Plate 1XLM25 TUBE + 2XLM32 Tubes
65	Brass Plate 3x20mm BW GLANDS
66	Brass Plate GROM 2x25mm
67	Brass Plate 3XLM20 Tubes
68	Brass Plate GROM 3x20mm

Options

Ref.	
S	Special requirements: eg fuses, tails, external earth lead tails.



CABLE JOINTS, CABLE TERMINATIONS, CABLE GLANDS, CABLE CLEATS
FEEDER PILLARS, FUSE LINKS, ARC FLASH, CABLE ROLLERS, CUT-OUTS

11KV 33KV CABLE JOINTS & CABLE TERMINATIONS
FURSE EARTHING
www.cablejoints.co.uk
Thorne and Derrick UK
Tel 0044 191 490 1547 Fax 0044 191 477 5371
Tel 0044 117 977 4647 Fax 0044 117 977582

Control and Protection

Festive Lighting Unit complete
with 'EA' Extension Trough
Height 262mm Width 94mm
Depth 93mm



Specification

- Independently tested by BSTS
- Isolator made from flame retardant ABS plastic
- Completely flexible to your project needs
- 4 Din modules
- Fully pre-wired to ease installation
- Clear lockable hinged lid showing the 'ON/OFF' position

The Trojan Maxi range with its flexibility of up to 4 Din modules, its ability to be combined with an extension trough and various gland plates means it's ideal for the control and protection of festive lighting.

All festive lighting projects differ. Here at Lucy Lighting, we recognise this and can design any festive lighting isolator to suit your needs.

Whether you require Switches, Fuse holders, MCB's, RCBO's, RCD's or digital and analogue time clocks we are able to design our products around this.

We can also allow for larger cables with our large extension trough and additional terminal blocks to make cabling easier. Please refer to our sales office in order to ensure your specific requirements are fulfilled.

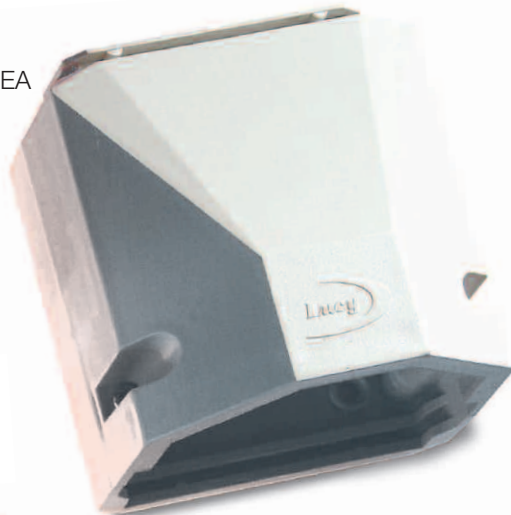
ED



Red Extension Trough ED

Height 104mm Width 78mm
Depth 65mm Note: Available
with up to 5 Terminal Blocks

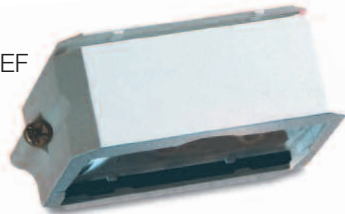
EA



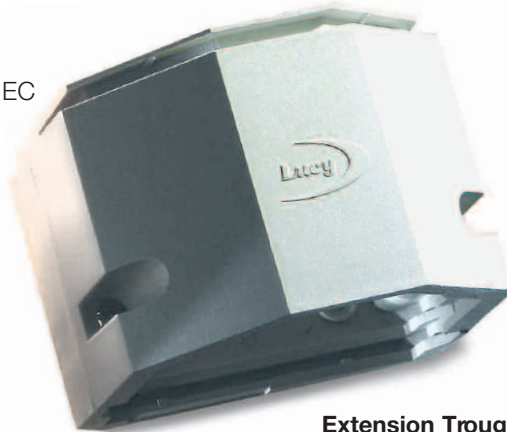
Extension Trough EA

Height 90mm Width 89.5mm
Depth 93mm

EF



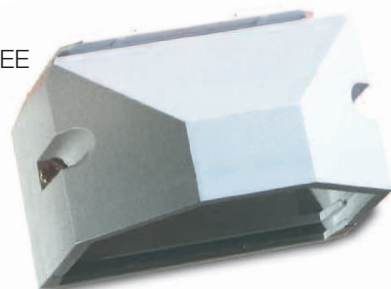
EC



Extension Trough EB

Height 60mm Width 89.5mm Depth
93mm Note: Available as part of the
extended long trough - Ref EC in
the ordering chart

EE



Adaptor Trough EE

Height 75.5mm Width 86mm
Depth 93mm

To complement the Trojan range, we have developed a range of extension troughs to provide additional space when terminating larger conductors or multiple cables. The extension troughs are manufactured from the same high performance thermoplastics as the fuse unit.

Extension Troughs can be provided with up to 5 insulated Terminal Blocks (refer to Red Extension Trough ED).

Extension trough EA accepts two pre-moulded supports for various terminal blocks

The cable entry plates are available in brass and plastic

Extension trough EB fits onto extension trough EA to provide additional space for multiple cables to create Ref EC

Titan2 range

APPROVED
BSTS NEW TESTED
APPROVED



Titan2
Height 150mm
Width 81mm
Depth 65mm

The Titan2 cutout from Lucy Lighting has many unique features for a compact unit of this size.

The Titan2 range provides improved flexibility and will be the only unit available to achieve the extensive range of terminations required by the installer. The Titan2 range has been designed with a Cam Lever handle that ensures easy removal of the fuse carrier.

This robust unit has been designed and manufactured to withstand heavy use in demanding locations.

The Titan2 range provides increased access to allow easier cabling for incoming terminations. This is because of its clear access gear tray and external fixing screws.

Its new accessories include 2 x mini extension troughs to accommodate 2 and 3 way cable entries and a new triple entry extension trough (refer to extension trough section).

Specification

Designed, manufactured and tested in accordance with BS 7654 and IEC 947 Part 1

Accepts Fuses to IEC 269-1 and BS 88 Part 1, AC16 Tag type

Moulded in high performance Thermoplastics to meet BS 7654

Single pole or Double pole

Single fuse or Twin fuses

Clear access gear tray for enhanced terminations (external fixing screws)

Terminal blocks to accept circular conductors up to 25mm CSA

Terminal blocks can accept from 1 to 3 conductors also available

Studs and lug connections

Terminal blocks have serrated bores to ensure good contact with all conductor types

The block cover moulded in red thermoplastic for safety

Cable entry plates available in plastic or brass

A sealing wire facility is provided

A padlock facility for safe working

A captive screw secures the cam lever handle IP43 rating

Titan2

Single and Double Pole Cut-out



Titan2
Height 150mm
Width 81mm
Depth 65mm

**Titan2 Fuse Unit**

Ref.	
	Single Phase, Double Pole
NT02	Loop in/out, 1 Fuse
NT04	Loop in/out, 2 Fuses
	Single Phase, Double Pole
NT06	Loop in/out, 1 Fuse
NT08	Loop in/out, 2 Fuses
	Single Phase, Double Pole + Spurs
NT10	Loop in/out, 2 Fuses with double pole fused spur
	Three Phase, Double Pole
NT12	Loop in/out, 1 Fuse
NT14	Loop in/out, 2 Fuses
	Single Phase, Single Pole CNE
NT15	Loop in/out, 1 Fuse

Note: T15 PME unit can only be used with Tunnel Terminals 'TT'.

Extension Trough

Ref.	
0	No extension trough
NEA	Extension trough (triple entry)
NEC	Large extension trough (=EA+EB triple entry)
NEE	Adapter trough EE (triple entry)
NEF	Mini extension trough EF (double entry)

Note: Please refer to Extension Trough page

Standard Titan Gland Plate (Double Entry)

Ref.		
02	Plastic Plate Grom 2x20mm	⊗⊗
06	Plastic Plate Grom 2x25mm	⊗⊗
12	Brass Plate Grom 2x20mm	⊗⊗
13	Brass Plate Grom 2x25mm	⊗⊗
22	Brass Plate Grom 1x20mm+Tube1xLM20	⊗⊗
24	Brass Plate Grom 1x25mm+Tube1xLM25	⊗⊗
25	Brass Plate Tubes 2xLM20	⊗⊗
26	Brass Plate Tubes 2xLM25	⊗⊗
	Extension Trough Gland Plate (Triple Entry)	
51	Plastic Plate Grom 3x25mm	⊗⊗⊗
53	Brass Plate Grom 3x25mm	⊗⊗⊗
60	Brass Plate Grom 1x20mm+2xLM25 Tubes	⊗⊗⊗
61	Brass Plate 3xLM25 Tubes	⊗⊗⊗
SGP	Special Gland Plate	⊗⊗⊗

Note: All Brass Gland Plates are complete with Earth Stud and Internal Earth Lead

Terminal Block

Ref.	
TT	Tunnel Terminal
SC	Stud Connections
3T	3 Tunnel Terminal Block
BP	Brass Pillar

Options

Ref.	
B	300mm External Earth Lead
D	Fit Fuse/s, state rating
F	Trough Block Carrier as specified
S	If "S" Special requirement is selected, a full description must be provided

NEF



Mini Extension Trough NEF

Height 33.5mm Width 79mm
Depth 65.5mm

NEE



Adaptor Trough NEE

Height 75.5mm Width 86mm
Depth 93mm

NEA



Extension Trough NEA

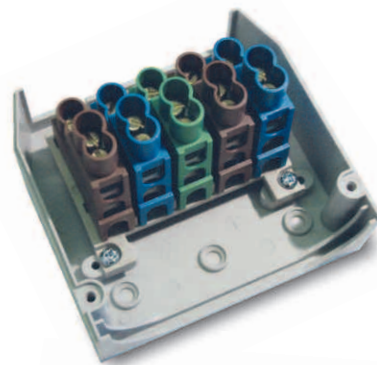
Height 90mm Width 89.5mm
Depth 93mm

NEB



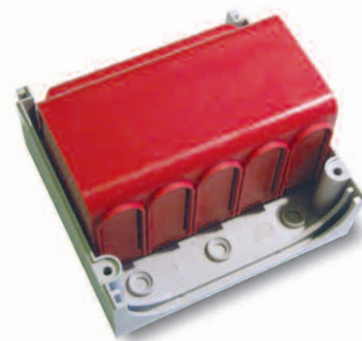
Extension Trough NEB

Height 60mm Width 89.5mm Depth 93mm
Note: Available as part of the extended long trough - Ref NEC in the ordering chart



Extension Trough NEA

With terminal blocks and stud terminals



To complement the **Titan2** range, we have developed a range of extension troughs to provide additional space when terminating larger conductors or multiple cables. The extension troughs are manufactured from the same high performance thermoplastics as the fuse unit.

Extension Troughs can be provided with up to 5 insulated Terminal Blocks.

Extension trough NEA accepts two premoulded supports for various terminal blocks and studs

The cable entry plates are available in brass and plastic

Extension trough NEB fits onto extension trough NEA to provide additional space for multiple cables to create Ref NEC



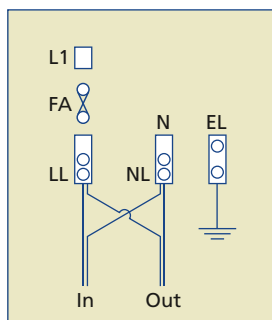
Ref.	Description
LI	Live supply in
NI	Neutral supply in
LL	Live supply loop
NL	Neutral supply loop
LS	Live spur
NS	Neutral spur
EU	Earth block in upper chamber
EL	Earth block in lower chamber



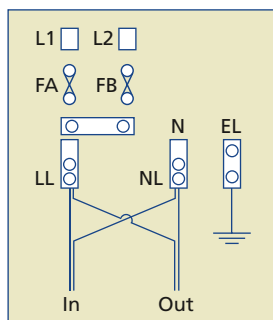
Symbol denoting LST Fuselink

Single Phase Single Pole

Type NT02 Loop in/out
Single Fuse

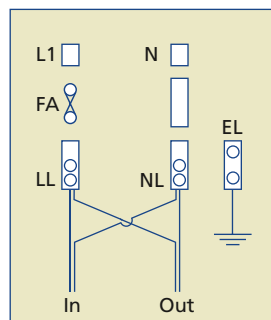


Type NT04 Loop in/out
Two Fuses

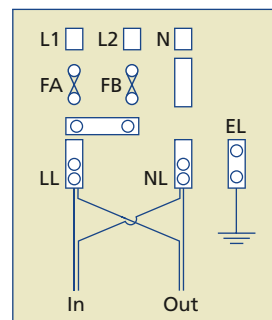


Single Phase Double Pole

Type NT06 Loop in/out
Single Fuse

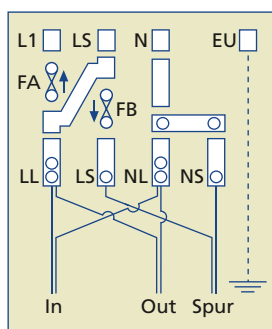


Type NT08 Loop in/out
Two Fuses



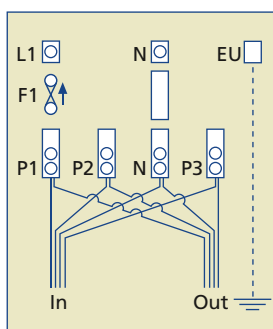
Single Phase Double Pole with Double Pole Fused Spur

Type NT10 Loop in/out with
Fused Double Pole Spur

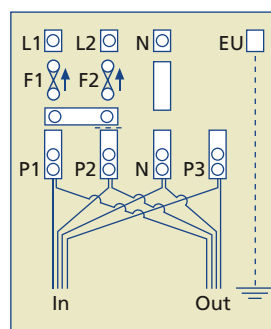


Three Phase Double Pole

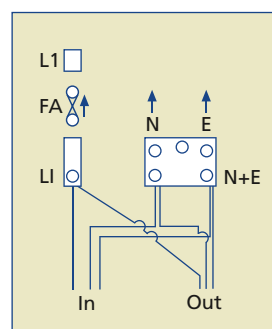
Type NT12 Loop in/out
One Fuse



Type NT14 Loop in/out
Two Fuses



Type NT15 REC/PME Version



This unit will usually require an extension
trough Type A with suitable gland plate

MC040SLF

Single Phase Fuse Unit



Specification

Designed, manufactured and tested in accordance with BS7654:1997

Accepts fuse links to BS 88 Part 1, AC16 Tag Type

Single Pole isolation

Single fuse

All terminals are formed from solid brass, serrated and electroplated

Maximum cable of 16mm² stranded copper or 25mm² solid aluminium conductors

Cable entry via PVC grommets as standard

Outgoing cables exit below horizontal to form drip loop

Sealing wire facility

Designed, manufactured and tested in accordance with BS7654:1997. The latest Single Pole Street Lighting Cut-out from Lucy Lighting has been redesigned in a high grade, high performance thermoplastic. Its new low body line split increases cable access. By incorporating retained fixing screws, this allows for reduced installation time. It also has a redesigned cam operated lever mechanism with zero extraction force. Operating cam lever ensures electrical disconnection prior to removal of fuse carrier, thus giving additional safety features.

There are two versions available, separate, neutral and earth (SNE) and combined neutral/earth (CNE) for PME applications.

To meet the high demands of our customers Lucy Lighting has developed the Fortress Range of Enclosures. These Enclosures offer a robust solution providing increased durability and a long maintenance free life. In addition to our Fortress Range we can also offer alternative materials and bespoke designed Enclosures.



Mini Pillar

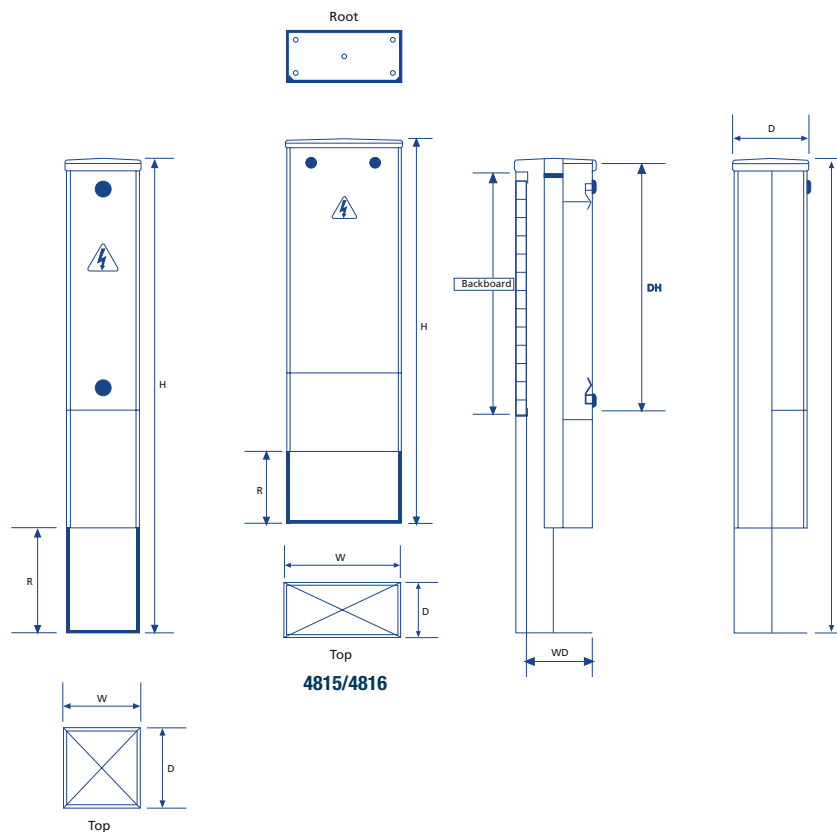
Fortress



The range is available in 7 sizes to meet most applications for the smaller installation. The 7 pillar sizes are also offered in two material finishes:

HDG: Sheet Steel which is Hot Dip Galvanised to BS 1461.

HDP: Sheet Steel which is Hot Dip Galvanised to BS 1461 and then treated and Painted as standard in grey.

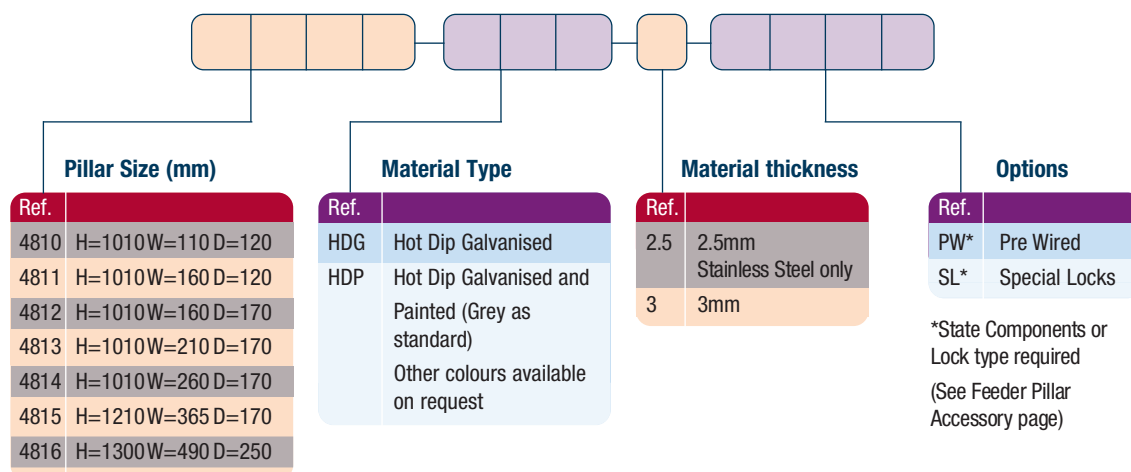


Sheet Steel & Stainless Steel Mini Pillars

Dimensions (mm)

Pillar size code	4810	4811	4812	4813	4814	4815	4816
Nominal Size in inches (WxD)	4x4	6x4	6x6	8x6	10x6	14x6	19x10
Height Above Ground	787	787	787	787	787	987	1000
Root Section (R)	223	223	223	223	223	223	300
Width (W)	110	160	160	210	260	365	490
Depth (D)	120	120	170	170	170	170	250
Door Opening Height (DH)	490	490	490	490	490	690	780
Working Depth (WD)	85	85	130	130	130	130	199
Backboard Size (WxH)	90x500	140x500	140x500	190x500	240x500	345x710	480x790
Weight (Kg)	11	14	16	19	22	32	47

The ordering code consists of 4 sections



Specification

The pillars have a fully removable door
Tri-head locks fitted as standard
Backboard made from 18mm thick treated exterior grade plywood
Danger warning label fitted in a recess in the door
Earth lead connection supplied from pillar body to door

High quality UV resistant paint, to a minimum thickness of 60 microns
Fixing bolts, nuts, washers and locks are all stainless steel
Detachable roof
Backboard can be removed for wiring

Options

May be supplied pre-wired
Other colours available to special order
G2A Highways paint specification
Special labels to identify ownership

Fortress Range

Sheet Steel & Stainless Steel Single Door Hinged Pillars

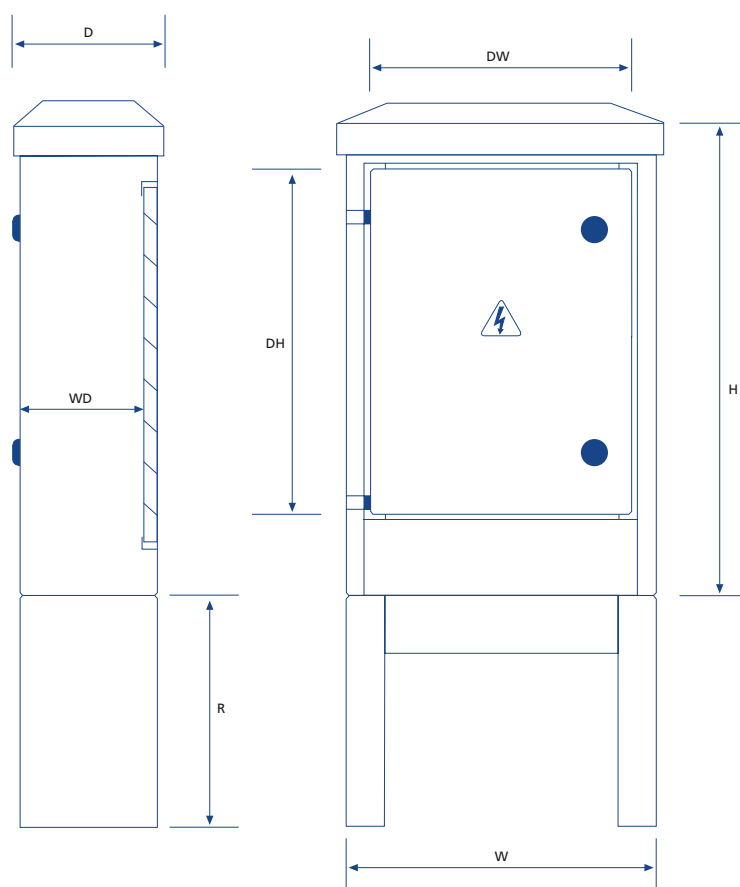


The Fortress range of Sheet Steel pillars is manufactured to a new modular design and is available in 6 sizes and 3 material types.

HDG: Sheet Steel which is Hot Dip Galvanised to BS 1461.

HDP: Sheet Steel which is Hot Dip Galvanised to BS 1461 and then treated and Painted as standard in grey.

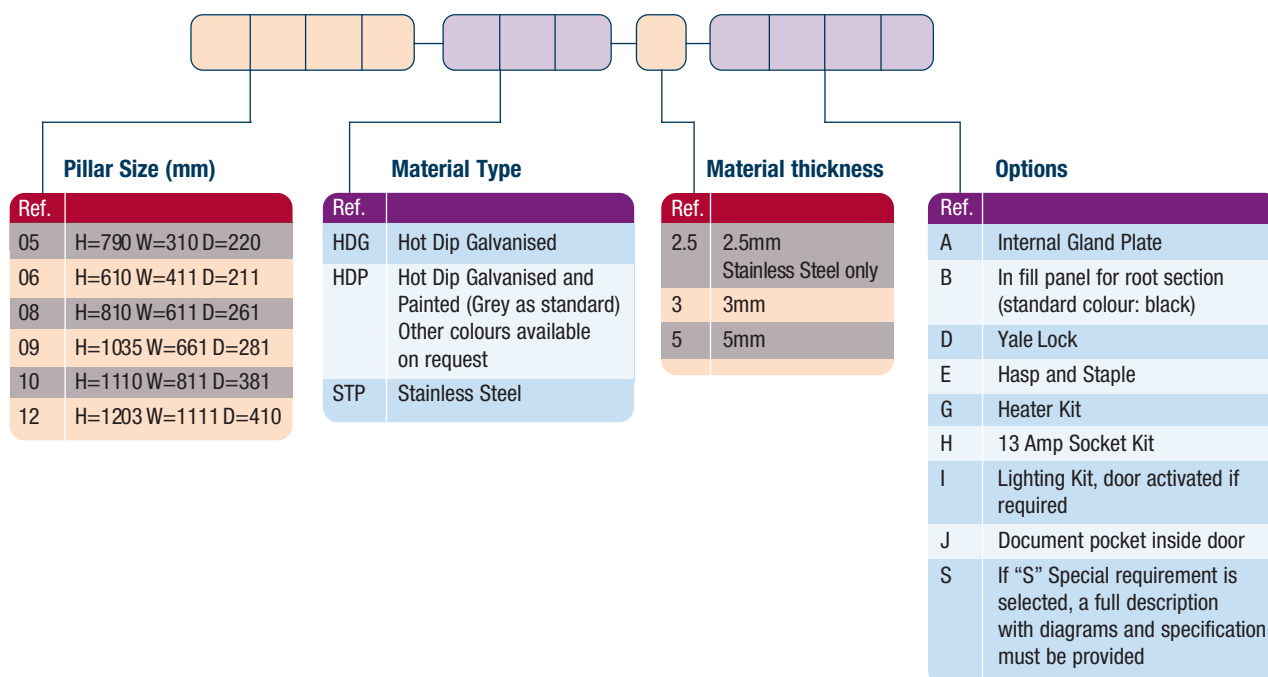
STP: 2.5mm Stainless Steel



Dimensions (mm)

Pillar size code	5	6	8	9	10	12
Height (H) above ground	791	636	836	1035	1194	1294
Root Section (R)	350	300	300	350	350	350
Width (W)	310	400	600	661	800	1100
Depth (D)	220	180	250	281	350	400
Door Opening Height (DH)	580	415	615	840	915	1015
Door Opening Width (DW)	200	300	500	550	700	1000
Working Depth (WD)	170	155	225	225	325	375
Backboard Size (WxH)	630x300	380x455	580x655	630x880	780x955	1080x1040
Weight (Kg) (3mm thickness)	36	42.5	71.5	84	108	142

The ordering code consists of 4 sections



Specification

Long life hinges manufactured from solid stainless steel blocks on all versions

Fitted as standard two Tri-head locks

Backboard made from 18mm thick treated exterior grade plywood

Detachable root section finished in bitumen enriched paint

Danger warning label fitted in a recess in the door

Earth lead connection supplied from pillar body to door

HDP is powder coated grey (BS 4800.18B25) as standard

High quality UV resistant paint to a minimum thickness of 60 microns

Door seal up to IP65

Detachable roof

Backboard can be removed for wiring

Anti vandal lock available
(See Feeder Pillar Accessory page)

Options

Pre-wired

Special labels

G2A Highways paint specification



CABLE JOINTS, CABLE TERMINATIONS, CABLE GLANDS, CABLE CLEATS
FEEDER PILLARS, FUSE LINKS, ARC FLASH, CABLE ROLLERS, CUT-OUTS

11KV 33KV CABLE JOINTS & CABLE TERMINATIONS
PURSE EARTHING
www.cablejoints.co.uk
Thorne and Derrick UK
Tel 0044 191 430 1547 Fax 0044 191 477 5371
Tel 0044 117 977 4647 Fax 0044 117 9775582

Fortress Range

Double door pillars



The Fortress range of Sheet Steel pillars is manufactured to a new modular design and is available in 9 sizes.

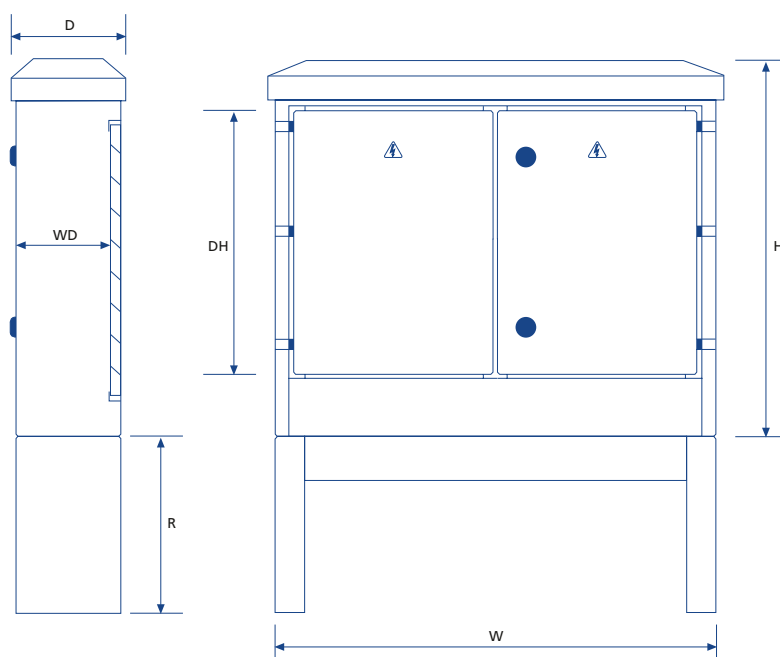
Sizes 14,16,18,20 are 1300mm high above the root and sizes 22,24,26,28,30 are 1600mm high above the root.

The 9 sizes are also offered in 3 materials:

HDG: Sheet Steel which is then Hot Dip Galvanised to BS 1461 (supplied in either 3mm or 5mm).

HDP: Sheet Steel which is Hot Dip Galvanised to BS 1461 and then treated and Painted in grey (supplied in either 3mm or 5mm).

STP: 2.5mm Stainless Steel



Note

Lifting lugs provided are only designed to lift the pillar shell.

Sheet Steel & Stainless Steel Double Door Hinged Pillars

Dimensions (mm)

Pillar size code	14	16	18	20	22	24	26	28	30
Height above Ground (H)	1300	1300	1300	1300	1600	1600	1600	1600	1600
Root Section (R)	380	380	380	380	380	380	380	380	380
Width (W)	1250	1500	1750	2000	1250	1500	1750	2000	2250
Depth (D)	450	450	450	450	450	450	450	450	450
Working Depth (WD)	375	375	375	375	375	375	375	375	375
Backboard Size (WxH)	1220x1145	1470x1145	1720x1145	1970x1145	1220x1445	1470x1445	1720x1445	1970x1445	2220x1445
Weight (Kg) (thickness 3mm)	176	202	234	266	201	231	269	305	343

The ordering code consists of 4 sections

Pillar Size (mm)		Material Type		Material thickness		Options	
Ref.		Ref.		Ref.		Ref.	
14	H=1300 W=1250 D=450	HDG	Hot Dip Galvanised	2.5	2.5mm	A	Internal Gland Plate
16	H=1300 W=1500 D=450	HDP	Hot Dip Galvanised and Painted (Grey as standard) Other colours available upon request		Stainless Steel	B	In fill panel for root section (standard colour: black)
18	H=1300 W=1750 D=450			3	3mm	D	Yale Lock
20	H=1300 W=2000 D=450	STP	Stainless Steel	5	5mm	E	Hasp and Staple
22	H=1600 W=1250 D=450					G	Heater Kit
24	H=1600 W=1500 D=450					H	13 Amp Socket Kit
26	H=1600 W=1750 D=450					I	Lighting Kit, door activated if required
28	H=1600 W=2000 D=450					J	Document pocket inside door
30	H=1600 W=2250 D=450					S	If "S" Special requirement is selected, a full description with diagrams & specification must be provided

Specification

Two, three hinged doors

Long life hinges are manufactured from solid stainless steel blocks on all versions

Two Lucy wedge locks fitted as standard

Backboard made from 18mm thick treated exterior grade plywood
Danger warning label fitted in a recess in the door

Earth lead connection supplied from pillar body to door

HDP is powder coated painted in grey (BS 4800.18B25) as standard

High quality UV resistant paint to a minimum thickness of 60 microns

Doors seal up to IP65

No fixed bar between doors gives totally open access for installing equipment

Detachable roof

Backboard can be removed for wiring
Detachable root section finished in Bitumen paint

Anti vandal lock available. See Feeder Pillar Accessory page)

Options

G2A Highways paint specification

Pre-wired

Special Labels



CABLE JOINTS, CABLE TERMINATIONS, CABLE GLANDS, CABLE CLEATS
FEEDER PILLARS, FUSE LINKS, ARC FLASH, CABLE ROLLERS, CUT-OUTS

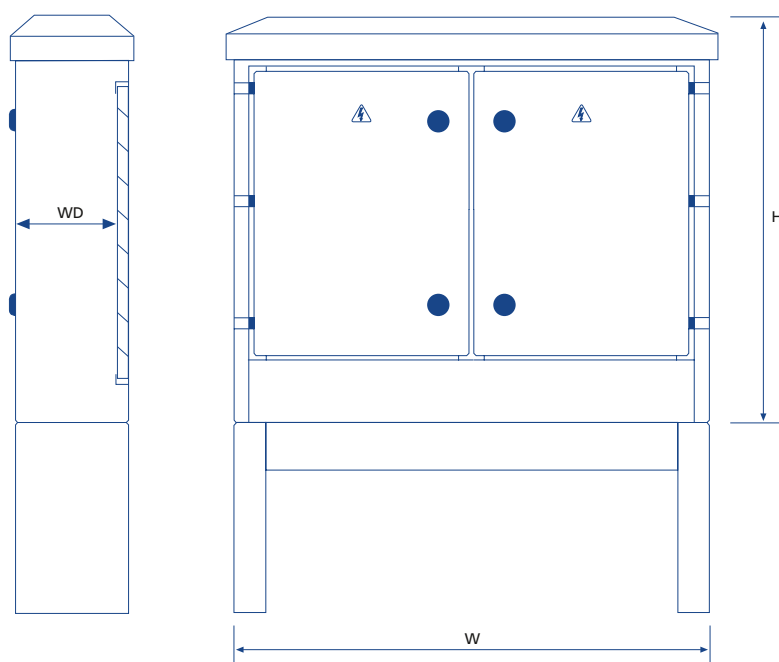
11KV 33KV CABLE JOINTS & CABLE TERMINATIONS
FURSE EARTHING
www.cablepoints.co.uk
Thorne and Derrick UK
Tel: 0044 191 490 1547 Fax: 0044 191 477 5371
Tel: 0044 117 977 4647 Fax: 0044 117 977 5582

Heritage Range

Hy-Cast 407 Cast Iron Service pillars



The classic robust Lucy Lighting cast iron pillar range has been designed for increased weather protection, security and very long life. Available in a variety of sizes, locking arrangements and colours, the Heritage range can be supplied with wooden backboard and interlocks to customer's specification. Two heights of cast iron service pillars are available within this range - Highline and Lowline with a common width and depth.



Dimensions (mm)

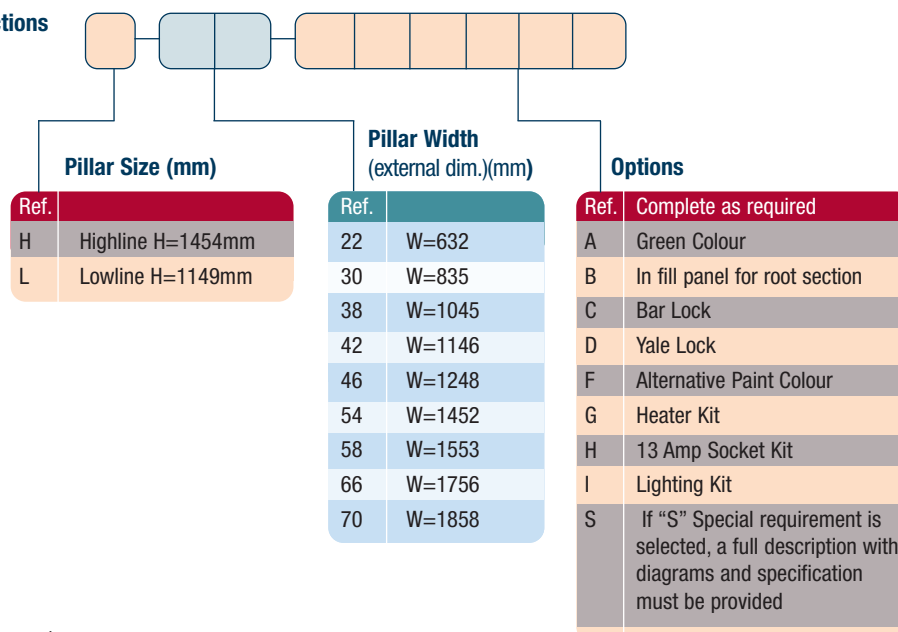
Pillar size code	22	30	38	42	46	54	58	66	70
A Width of Pillar Roof	632	835	1045	1146	1248	1452	1553	1756	1858
B Ground Fixing Centres (Bolt on root only)	273	476	686	787	889	1092	1194	1397	1498
C Ground Fixing Centres (Shell only)	521	724	934	1035	1137	1340	1442	1645	1746
D Min. distances required to open door	435	486	452	503	554	655	706	808	895
E Internal Width	559	762	972	1073	1175	1378	1480	1683	1784
Backboard Width	483	686	896	997	1099	1302	1404	1607	1708

Approx. Empty Weight (Kg)	22	30	38	42	46	54	58	66	70
Highline	240	280	315	332	360	398	415	440	460
Lowline	203	241	279	292	318	343	368	394	406

Note

1. Highline & Lowline dimensions A to D are common.
2. Pillar sizes 22 & 30 single door hinged from left hand side.
3. Internal working depth (WD) from backboard = 353mm.
(461mm external depth)
4. Backboard height: Highline = 1185mm Lowline = 880mm.

The ordering code consists of 3 sections



Specification

Pillar cap and sides cast in close grain grey iron to BS 1452: grade 180

All pillar components receive a special proprietary zinc phosphate resin treatment followed by a final coat of polyurethane paint in dark admiralty grey or hollybush green

IP3L3 degree of protection to IEC 947-1 standard

Doors and back panels are fabricated from 4mm special chrome enriched steel

Sets of zinc pre-coated steel in-fill panels available for fitting to root when mounted above ground

Doors can be fitted back and front if required with a centre mounted backboard offering dual entry/security i.e. for R.E.C. and local authority access

A backboard of 15mm marine ply is supplied as standard with each pillar

Two wedge locks with security covers fitted as standard

Doors are fitted with latching stays for safety but may be removed from their hinges if required

Concealed ventilation to prevent condensation via the Lucy original vented cap design

Options

Option of in-fill /apron plate available

Yale lock and Bar Lock

Other high performance finishes to relevant BS standards and suitable for hostile environments are available

Options of interior light, heater & thermostat available

Electrical interior fit out service to your design including factory test certificate

G2A Highways paint specification



Lucy Lighting has vast experience of manufacturing pre-wired distribution and control equipment. We have been successful in supplying for many years the street lighting and electrical contractor market for a variety of applications:

- Street lighting control
- Motorway applications
- Car park lighting
- Airports
- Private Developments
- Railways
- Telecommunications
- Docks
- MOD
- Water Utilities
- Power Stations
- Pharmaceutical Sites

We can manufacture pillars to your requirements or discuss a tailor made solution.

Specification

Made from either 3mm, 5mm sheet steel galvanised to BS 1461, 2.5mm, 3mm stainless steel or cast iron

Mini, single or double doors with hinges manufactured from solid stainless steel blocks

Door seal up to IP65

Backboard made from 18mm thick treated exterior grade plywood
Earth lead supplied from pillar body to door

Danger warning label fitted in a recess in the door

Fast and efficient design service

Technical advice

Additionally the Pillar body and detachable roof can be supplied separately to the backboard which can be delivered and installed on site.

Can provide full layout and circuit drawings

Control equipment to suit your requirements

- Single or three phase control/distribution system
- Contactor/timer control
- Photo cell relay options
- Door interlock safety switch
- Distribution board – MCB or HRC fuses
- Cable terminations options
- Additional extra's can include interior lighting, lock options, RCCB socket, heater kit

Dimensions (mm)

Pillar size code	MIN 0	MIN 1	MIN 2	MIN 3	MIN 4
A Height	900	960	1030	1863	1638
B Root Section	300	360	360	325	325
C Width	150	265	385	600	600
D Depth	160	160	220	220	220
E Door Opening Height	470	517	527	530/677	810
F Door Opening Width	110	224	329	408/514	498
G Working Depth	110	116	176	163	165
H Backboard Size	470	605	605	528/664	1155
I Backboard Size	130	245	350	590/540	580
J Weight	12	22	20	110	86

- Alternative finishes available
- 18mm External Grade Plywood fully treated backboard
- Hot dip galvanised to BS EN ISO 1461
- 3mm mild steel (5mm available)
- M8 Tri head locks as standard
- Stainless steel hinges
- Painted Root



Locks

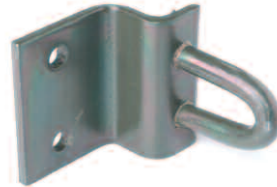
In order to support our product literature on the Fortress and Heritage Range Feeder Pillars, we are able to bring you specific information on the locks available within these ranges.

Each pillar has standard locks available but Lucy Lighting also offers the ability to have alternative or additional locks for extra security measures.



Tri Head / 'O' Lock

The Tri-Head Lock is our standard on our steel Mini and Single Door Pillars. The 'O' Lock is an alternative for the Tri-Head Lock.



Hasp and Staple Padlock

This is an optional extra for the Single and Double Door Fortress Range Feeder Pillars.



Fortress Range Wedglock

This is the standard lock for Steel Feeder Pillars.



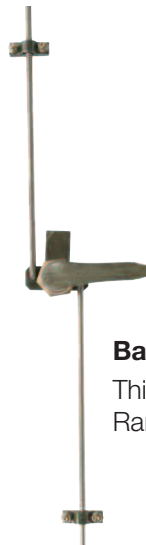
Cast Iron Heritage Range Wedglock

This is our standard lock for the Heritage Range.



Yale Lock

This is an optional extra for the Fortress and Heritage Range.



Bar Lock

This is an optional extra for the Heritage Range Feeder Pillar.



Examples of anti-vandal locks available from Lucy Lighting

Anti-Vandal Locks

Lucy Lighting are also able to offer you a number of anti-vandal locks available to fit our Fortress and Heritage Range Feeder Pillars. Please refer to our Sales Office in order to ensure your specific requirements are fulfilled.

MNLS Products



Specification

Conforms to BS 7657

Enclosure moulded in grey glass filled engineering thermoplastic material

Single pole

Moulded shield for each cable exit

Accepts 2 x 35mm² cables at bottom and 3 x 35mm² cable sat top

Sealing wire facility

Two pinch screws for each cable entry

Used for live or neutral connections

Labelled cover for use as earth block

Termination block machined from brass, with serrated cable bores

100 Amp

Order Details

MLNS

Height 68mm Width 49mm Depth 42mm

To order quote

MLNS 5 way connector box



Specification

Moulded in black phenolicthermoset material

Single pole

Accepts 3 x 70mm² cables at bottom and 3 x 70mm² cables at top

Sealing wire facility

Captive sealing screws

Two pinch screws for each cable entry

Termination block machined from brass, with serrated cable bores

150 Amp

Order Details

6MLNS

Height 53mm Width 115mm Depth 53mm

To order quote

6MLNS 6 way connector box



CABLE JOINTS, CABLE TERMINATIONS, CABLE GLANDS, CABLE CLEATS
FEEDER PILLARS, FUSE LINKS, ARC FLASH, CABLE ROLLERS, CUT-OUTS

11KV 33KV CABLE JOINTS & CABLE TERMINATIONS

FURSE EARTHING

www.cablejoints.co.uk

Thorne and Derrick UK

Tel 0044 191 490 1547 Fax 0044 191 477 5371

Tel 0044 117 977 4647 Fax 0044 117 9775582