

Tel: +44 (0)191 490 1547

Fax: +44 (0)191 477 5371

Email: northernsales@thorneandderrick.co.uk

Website: www.cablejoints.co.uk

www.thorneandderrick.co.uk



Exterior Power
Distribution Equipment

Fortress Pillar Range

The market leading Fortress pillar range is available in a wide range of materials and finishes, including G2A for highway applications. All of which are available pre-wired.

Mini



- Mild steel hot dip galvanised construction
- Stainless steel also available
- Available in 7 sizes: 113mm – 503mm wide
- Painted options including G2A
- 3mm shell thickness
- Single door
- Supplied with Tri-head lock(s)
- Removable door
- Stainless steel fixings and locks
- Bitumen painted root section for longer life
- 18mm backing board (exterior grade plywood)
- Other 'anti vandal' lock options are available

Slimline



- Mild steel hot dip galvanised construction
- Stainless Steel also available
- Available in 6 sizes: 250mm – 800mm wide
- Slimline depths from 160mm – 325mm
- Painted options including G2A
- 3mm shell thickness
- Single door with two Tri-head locks
- Two vandal resistant fully flush hinges
- Stainless steel locks and hinges
- Detachable, Bitumen treated, root section
- IP65 door seal
- 18mm backing board (exterior grade plywood)
- Other 'anti vandal' lock options are available

Single Door



- Mild steel hot dip galvanised construction
- Stainless Steel also available
- Available in 6 sizes 310mm – 1100mm wide
- Shell thickness option
 - 3mm
 - 5mm
 - 2.5mm (stainless steel)
- Single door with two Tri-head locks
- Painted options including G2A
- Two vandal resistant fully flush hinges
- Stainless steel locks and hinges
- Detachable roof
- Detachable, Bitumen treated, root section
- IP65 door seal
- 18mm backing board (exterior grade plywood)
- Other 'anti vandal' lock options are available

Double Door



- Mild steel hot dip galvanised construction
- Stainless Steel also available
- Available in 9 sizes 1250mm – 2250mm wide
- Shell thickness options
 - 3mm
 - 5mm
 - 2.5mm (stainless steel)
- Double door with two Lucy Wedge locks
- Painted options including G2A
- Six vandal resistant fully flush hinges
- Stainless steel locks and hinges
- Detachable roof with lifting hooks
- Detachable, Bitumen treated, root section
- IP65 door seal
- 18mm backing board (exterior grade plywood)
- Other 'anti vandal' lock options are available

Pre-wired Pillars

Lucy Zodion has a wealth of experience in the manufacture and supply of pre-wired power distribution systems. This expertise, combined with our market leading ranges of power distribution pillars, enables Lucy Zodion to deliver best in class solutions across a wide range of sectors.



Design & Manufacture

From technical site surveys through to design and manufacture, our pre-wired facility provides a fast and efficient design and build service, making Lucy Zodion the No.1 supplier of pre-wired solutions in the UK.

From power distribution feeder pillars for highways and street lighting to In-Ground distribution pillars for markets and urban regeneration schemes, Lucy Zodion is the UK's leading supplier, whose pre-wired service is at the heart of our customer proposition.

Our specialist Pre-wired Pillar operation delivers complete solutions for:

- Street Lighting
- Highways
- Airports
- Ports
- Retail & Leisure
- Industry
- Rail

Quality and Standards

Our pre-wired solutions are manufactured in the UK to the highest standard in accordance with BS7671 and BSEN 61439. Lucy Zodion is ISO 9001:2008 and ISO 14001:2000 certified – ensuring we operate efficiently and sustainably to provide our customers with best in class service and quality.

In-Ground Distribution Pillars

The Westminster range of In-Ground distribution pillars meet a wide range of applications where discreet, on-demand power is required. Available pre-wired in various configurations, the In-Ground solution retracts flush when closed making it the ideal solution for urban schemes, markets, shopping centres, event spaces and other temporary power applications.



London Borough of Newham Market

Specification

- 5mm/10mm galvanised construction
- Securely locked - flush top surface when closed
- Electrical components protected to IP67
- 6x standard SP&N socket arrangements (max 100A SP&N Supply)
- 110/240Vac variants
- Positive drainage spigots option

Addition information

- 2x 'Tub' designs to incorporate infill plates/30mm medium
- Single and 3-phase variants on request - up to 250A TP&N
- Addition services available including Water/DATA/Metering
- Automatic power disconnection in down position (LED Indicator)
- Stainless steel construction (304/316 grade) for corrosive applications
- Fully earth bonded - Earth mats/Rods available



Heritage Cast Iron

The Lucy Heritage Cast Iron Feeder Pillar range is extremely robust, offering unrivalled longevity of service. Available pre-wired in a range of configurations and sizes, the Lucy Heritage range is the perfect solution for urban and highway schemes where traditional character and long service is paramount.

Specification

- Cast Iron construction with Steel rear and door panels
- Zinc primer applied for long life
- A range of pillar sizes
 - Width: 582mm – 1808mm
 - Height: 1149mm or 1454mm
- Available Pre-wired in a range of configurations
- Painting to BS or RAL colours

Addition information

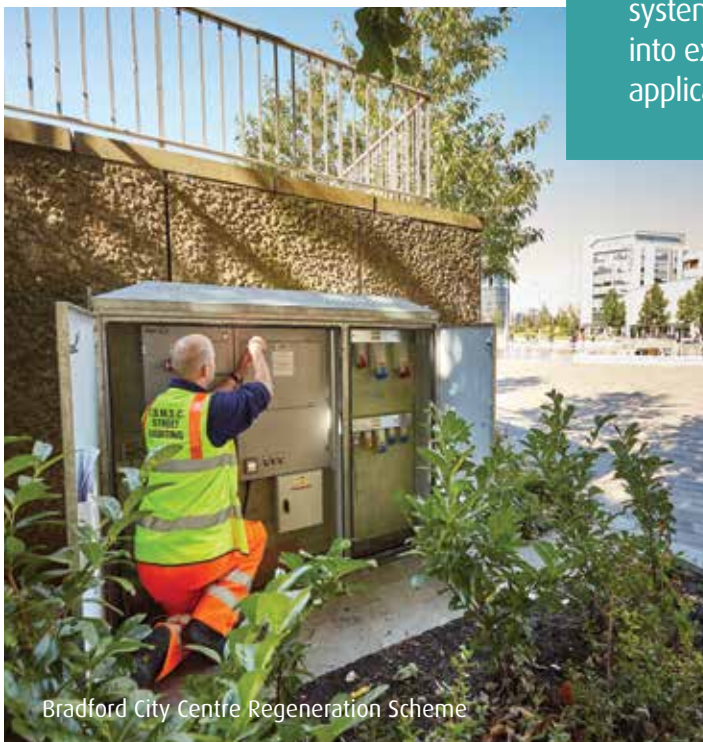
- Pre-wiring available
- Wide range of locks available
- G2A paint finishes available for highways applications
- Infill panels for above ground installation
- Doors can be fitted front and back for dual access



Bletchley Park Museum

Dist RX

A new range of miniaturised single and 3-phase street lighting feeder pillars designed into a dedicated distribution system that can be pre-wired offsite and mounted easily into existing floor mounted pillar shells. This retrofit application greatly reduces time onsite and costs.



Bradford City Centre Regeneration Scheme

Specification

- Miniaturised feeder pillar range designed for retrofit
- 100A SP&N or TP&N options
 - 6 – 24 SP&N
 - 2 – 8 TP&N
- Interlocked Switch-fuse or Switch-disconnector for safe operation
- Detachable brass gland plates as standard
- Available in painted mild steel or painted stainless steel

Options

- Individual or group switching options
- Additional internal consumer units for ancillary power e.g. heater, light switch, power outlet, photocell control
- Selection of energy efficient ancillary products
- Built in terminal rail for larger cables
- Integral pillar socket, light and override switches

Lucy Zodion is the UK's leading provider of control and power distribution products for street lighting applications. Our market-leading products are manufactured and distributed in the UK, and exported across the globe.

All of our products are built with street lighting in mind, enabling our products to withstand the harshest application environment, whilst delivering unrivalled continuity of service.

Our product ranges include:

- Photocells & Control Gear
- Isolators and Cut-Outs
- Pillar Shells
- Pre-wired Pillars
- Vizion Central Management System



T&D THORNE &
DERRICK UK

Tel: +44 (0)191 490 1547
Fax: +44 (0)191 477 5371
Email: northernsales@thorneandderrick.co.uk
Website: www.cablejoints.co.uk
www.thorneandderrick.co.uk

