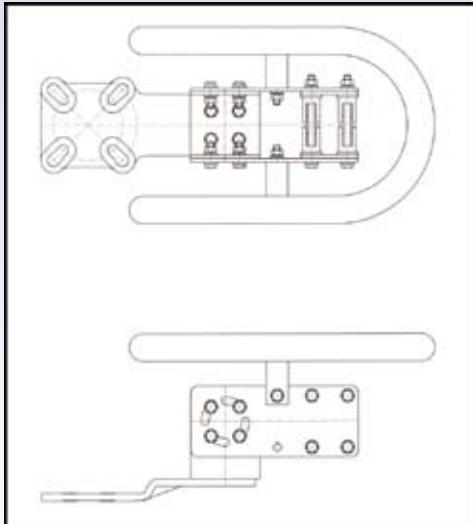
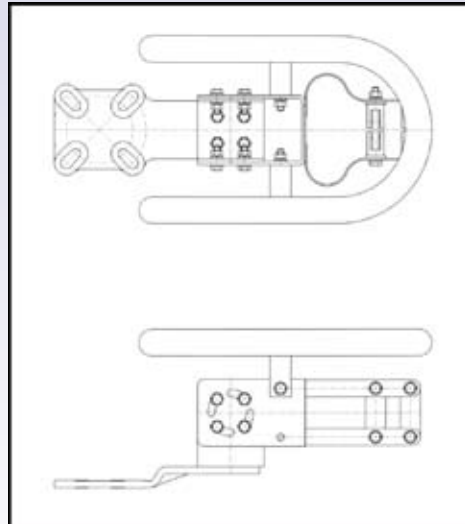


## 275kV 2000amps Connector Arrangements

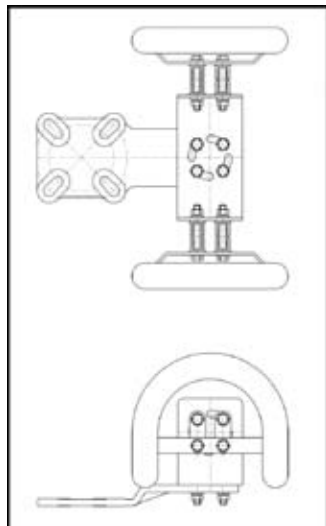
for Copper Busbar and Twin Copper Stranded Conductor — Ref PCSTD08



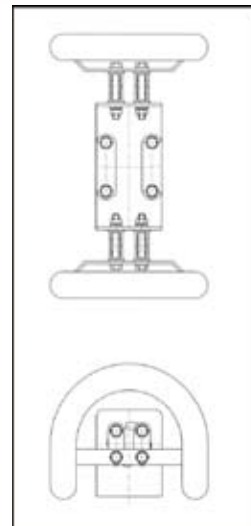
Rigid Connector Copper Busbar  
to 127/178 PCD



Expansion Connector Copper Busbar  
to 127/178 PCD



Rigid Connector to suit  
Twin Copper Stranded  
Conductor to 127/178 PCD



Tee Connector to suit  
Copper Busbar to  
Twin Copper Stranded  
Conductor