

# Ladders & Platforms

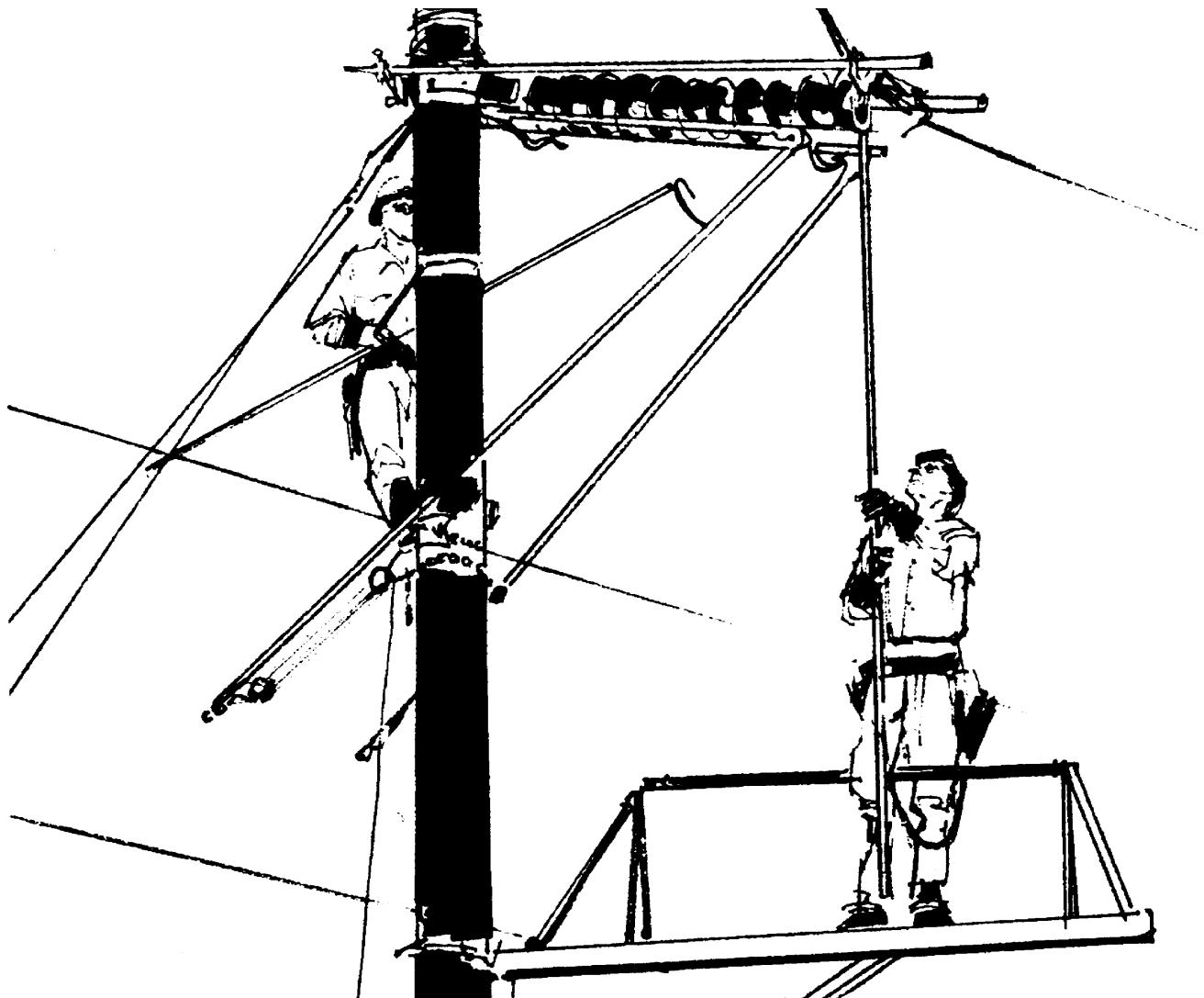
## Warranty - Material

Hubbell Power Systems, Inc. warrants all products sold by it to be merchantable (as such term is defined in the Uniform Commercial Code) and to be free from defects in material and workmanship. Buyer must notify the Company promptly of any claim under this warranty. The Buyer's exclusive remedy for breach of this warranty shall be the repair or replacement, F.O.B. factory, at the Company's option, of any product defective under the warranty which is returned to the Company within one year from the date of shipment. NO OTHER WARRANTY, WHETHER EXPRESS OR ARISING BY OPERATION OF LAW, COURSE OF DEALING, USAGE OF TRADE OR OTHERWISE IMPLIED, SHALL EXIST IN CONNECTION WITH THE COMPANY'S PRODUCTS OR ANY SALE OR USE THEREOF. The Company shall in no event be liable for any loss of profits or any consequential or special damages incurred by Buyer. The Company's warranty shall run only to the first Buyer of a product from the Company, from the Company's distributor, or from an original equipment manufacturer reselling the Company's product, and is non-assignable and non-transferable and shall be of no force and effect if asserted by any person other than such first Buyer. This warranty applies only to the use of the product as intended by Seller and does not cover any misapplication or misuse of said product.

## Warranty - Application

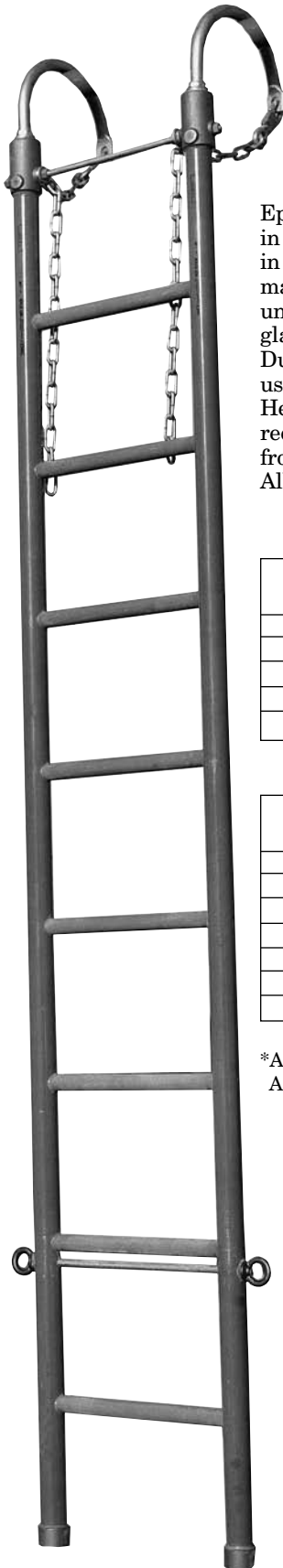
Hubbell Power Systems, Inc. does not warrant the accuracy of and results from product or system performance recommendations resulting from any engineering analysis or study. This applies regardless of whether a charge is made for the recommendation, or if it is provided free of charge.

Responsibility for selection of the proper product or application rests solely with the purchaser. In the event of errors or inaccuracies determined to be caused by Hubbell Power Systems, Inc., its liability will be limited to the re-performance of any such analysis or study.



**WWW.CABLEJOINTS.CO.UK**  
**THORNE & DERRICK UK**  
**TEL 0044 191 490 1547 FAX 0044 477 5371**  
**TEL 0044 117 977 4647 FAX 0044 977 5582**  
**WWW.THORNEANDDERRICK.CO.UK**

# Epoxiglas® Swivel Hook Ladders



Epoxiglas Hook Ladders have many applications in high voltage maintenance to position linemen in the most advantageous working location, making line repairs possible at otherwise almost inaccessible places. Two basic styles of Epoxiglas Hook Ladders are available. The Regular Duty Ladders, with 2" siderails, are normally used for vertical suspension applications. The Heavy Duty Ladders, with 2½" siderails are recommended where men are required to work from the ladder in a tagged-out position. All hooks are formed from 1"-diameter tempered

steel and can be swiveled to best fit various angles on the structure. Ladders are normally furnished with 8" diameter hooks but 14" or 18" diameters can be ordered for other structure applications. Steel chains clip to the hooks to assist in securing the ladder to a support. Rung material for both rated ladders are 1¼" Epoxiglas, sand coated.

## REGULAR-DUTY HOOK LADDERS 2" SIDE RAILS

Catalog No. 8" Hooks*	Overall Length	Distance Between Side Rails	Weight
H49048	8'	14½"	42 lb./18.9 kg.
H490410	10'	14½"	46 lb./20.7 kg.
H490412	12'	14½"	52 lb./23.4 kg.
H490414	14'	14½"	60 lb./27.0 kg.
H490416	16'	14½"	68 lb./30.6 kg.

## HEAVY-DUTY HOOK LADDERS 2½" SIDE RAILS

Catalog No. 8" Hooks*	Overall Length	Distance Between Side Rails	Weight
H49058	8'	14½"	47 lb./21.2 kg.
H490510	10'	14½"	55 lb./24.8 kg.
H490512	12'	14½"	63 lb./28.4 kg.
H490514	14'	14½"	70 lb./31.5 kg.
H490516	16'	14½"	76 lb./34.2 kg.
H490518	18'	14½"	85 lb./38.3 kg.
H490520	20'	14½"	98 lb./44.1 kg.

\*Add suffix "A" to catalog number for 14" hooks.  
Add suffix "B" to catalog number for 18" hooks.

Rated Working Load per Hook  
 8" hook 1250 lb.  
 14" hook 1000 lb.  
 18" hook 750 lb.

# Epoxiglas® Spliced Ladders

Chance Epoxiglas Spliced Ladders are available in combinations of up to 32 feet in 2½" diameter side rails, all splices are interchangeable, thus offering a variety of total reach with a few ladder sections in more convenient transportation lengths.



One-inch diameter steel rods, 8" in diameter, are arched to hook over structural shapes are furnished on all top section units. The hooks are complete with steel chains; larger hooks are available on special order.

Heavy-duty Chance Epoxiglas Ladders, manufactured in short, easy-to-transport lengths, are joined with the Chance Rigid Ladder Splice to form an unshakable, rigid splice; two eye pins in each rail, with a klik pin in the end of each are supplied.

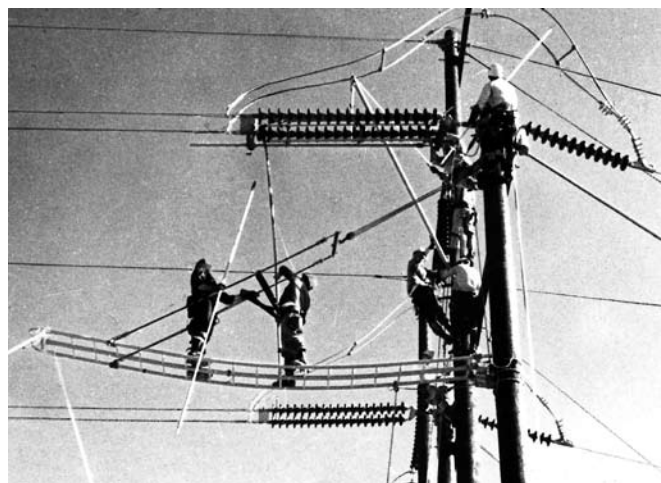


**SPLICED, HEAVY-DUTY HOOK LADDERS — 2½" SIDE RAILS**

Catalog No.	Top Section Length	Weight
C4020482	10'	44 lb./19.8 kg.
C4020402	12'	48 lb./21.6 kg.
C4020404	14'	52 lb./23.4 kg.
C4020407	16'	56 lb./25.2 kg.
C4020411	20'	64 lb./28.8 kg.
T4020423	10' middle section	44 lb./19.8 kg.

Catalog No.	Bottom Section Length	Weight
C4020418	8'	28 lb./12.6 kg.
C4020421	10'	32 lb./14.4 kg.
C4020422	12'	36 lb./16.2 kg.

## Three Rail Ladder



The greater mechanical strength, and less deflection of the Chance Three Rail Ladder increases the efficiency of line workers when working in a tagged-out position.

The third rail also provides for a convenient, centered, safety-belt-tie, and divides the ladder rung into natural positions for each foot placement.

Specifications include: 2½" center rail, capped on both ends; 2" side rails with 8" swivel hooks on the top and caps on the bottom end of the rail, 1¼" sanded rungs; steel tie rods top and bottom and pinned sleeves on outside rails for spliced ladders with a 15½" center. Both straight and spliced ladder units are available.

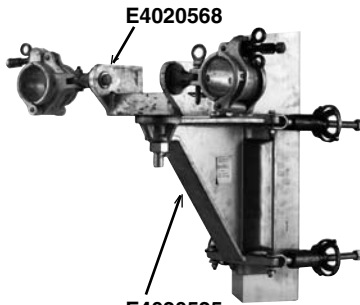
Catalog No.	Description	Weight
C4020119	20' Straight Ladder	100 lb./45.0 kg.
C4020512	8' Bottom Section	43 lb./19.4 kg.
C4020513	12' Bottom Section	52 lb./23.4 kg.
C4020514	12' Top Section	62 lb./27.9 kg.

# Ladder Support Attachments

Quick, easy rigging on most types of structure is the feature of the Chance ladder attachment sets, affording efficient use of the Chance Epoxiglas® ladder as a platform for live-line maintenance.

The sets were designed to be attached to either steel or wood structures, vertical or horizontal, to support the structure-end of the ladder in a tagged-out position. These sets are designed for use on 2½"-dia. side rail ladders and can be ordered as sets or choosing the individual components.

The diagram below shows a typical rigging and working loads with various guy mountings.



**E4020525**  
**Ladder Support Assembly**  
**for Vertical Tower Member**



**E4020087**  
**Ladder Support Assembly**  
**for Horizontal Tower Member**



**E4020526**  
**Vertical Ladder Support**  
**Attachment for Wood Poles**



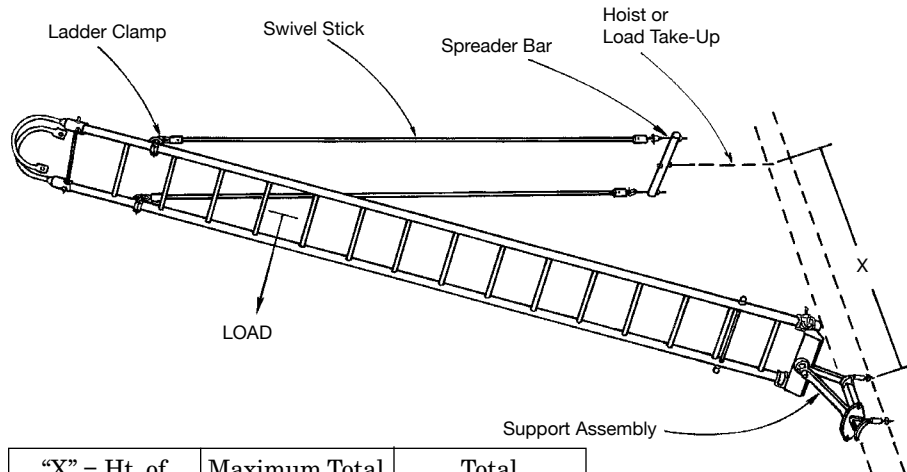
**E4020099**  
**Spreader Bar**



**E4020138**  
**Ladder Clamp**



**E4020092**  
**Double Clamp**  
 2½" and 1½" Diameter



"X" = Ht. of Guy Position	Maximum Total Working Load	Total Ladder Length
8' — 0"	500 lb.	16 ft.
12 — 0"	400 lb.	24 ft.
16' — 0"	300 lb.	32 ft.

Kits Consist Of Following:	C4020139 Ladder Support Kit For Vertical Attach. On Towers	C4020140 Ladder Support Kit For Horizontal Attach. On Tower	C4020155 Ladder Support Kit For Vertical Attach. On Wood or Steel Poles
E4020525 Vertical Attachment Tower	1		
E4020087 Horizontal Attachment Tower		1	
E4020526 Vertical Attachment Pole			1
E4020568 Yoke Assembly	1	1	1
E4020099 Spreader Bar	1	1	1
E4020138 Ladder Clamp	2	2	2
E4020141 (Also see Swivel Stick *below)	2	2	2
E4020092 Double Clamp	1	1	1
Total Kit Weight	61.5 lb./27.7 kg.	50 lb./22.57 kg.	61.5 lb./27.7 kg.



**\*Swivel Sticks**  
 (1¼" dia.)

Cat. No.	Length
*E4020141	12½ ft.
*T4020899	6 ft.
*T4020900	8 ft.
*T4020901	10 ft.



# Adjustable Ladder Hook



**CHANCE**

2355

## Attachment is Quick and Easy

The Adjustable Hook is easily attached in one quick operation. Just position on the Epoxiglas® side rail, swing the bolt around and tighten the wing nut.

The hook is made of 1" diameter heat-treated, rust-resistant steel and is equipped with a rugged chain and chain snap for a positive lock between the ladder and the support. Hooks are rated at 1,000 lb. per pair.

Catalog No.*			For Side Rail Dia.	Approx. Wt., Each†
8" Hook	14" Hook	18" Hook		
H49041	—	—	2"	7 lb./3.2 kg.
H49051	H49251	H49451	2½"	7 lb./3.2 kg.

\* Catalog No. includes one (1) Hook, Chain, and Chain Snap.

† Weights listed are for an 8" Hook; 14" Hook 8½ lb. each; and for 18" Hook 14½ lb. each.



Chance Adjustable Hooks for Epoxiglas® ladders are popular with hot line maintenance and construction crews. Adjustable hooks can be used with Epoxiglas Hook Ladders to obtain a more convenient position, or attached to an Epoxiglas Service Ladder for use as a temporary hook ladder. Adjustable Hooks are ideal for suspension use where there are uneven or sloping supports.

## Ladder Monitor Kit

### for EHV Microamp Measurement on Bare-hand Equipment

The Chance Ladder Monitor Kit is used in connection with EHV Barehand maintenance procedure to detect microamp leakage on the ladder before it is placed into use. This is accomplished by connecting the meter to the ladder, and taking readings as the ladder is placed in contact with the conductor.

It is recommended that readings be taken periodically during work progress to assure proper or optimum working conditions which could be altered by a change in the atmosphere.

The kit consists of a 200 micro-amp scale microammeter; three clamps to effect use on a three-rail ladder, a cable with clips and adapter to establish contact, a bracket to ground and hold the meter on the structure and two dry cell batteries. Instruction drawings for field assembly are also included in the kit. Note: Operating instructions included.



Catalog No.	Description	Weight
C4020288	Ladder Monitor Kit	7.5 lb./3.4 kg.

## Chance Sentinel Leakage-Current Monitor

To alert utility-line workers of overcurrent conditions on such aerial devices as insulated ladders and truck booms, the Chance Sentinel sounds an alarm if leakage current reaches a pre-set level. The leakage setting adjusts from 1 to 1,000 microamperes in resolution increments of 0.1 microamp.

The audible warning eliminates the need to watch the actual current level, continuously displayed on the Chance Sentinel's digital LCD screen. The alarm sounds immediately upon overcurrent and continues until the condition is corrected.

To also trigger a truck horn or other external alarm, a jack on the instrument panel accepts a standard ¼" two-conductor phone plug.

A test terminal on the panel permits a simple continuity check of the monitor leads prior to each operation. Before each use, the instrument automatically performs a rapid electronic self test. Simple operating steps are printed on the inside lid panel. A detailed instruction sheet also comes with each unit.

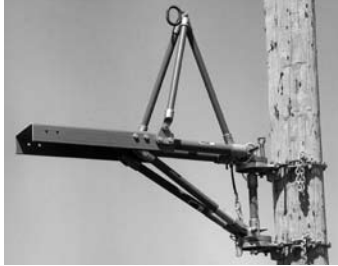


Kit includes 1 coaxial cable and battery, plus 2 jumpers and 3 hose clamps for connections to two- or three-rail ladders. Brackets on box secure to an earth-grounded structure up to 5/8" thick such as a transmission tower.

Catalog No.	Description	Weight
C4070025	Chance Sentinel Kit	9 lb./4.05 kg.

# Epoxiglas® Insulated Platforms

Epoxiglas Tripod and Pivot Base must be ordered as separate items.



4-ft. Insulated Platform



Epoxiglas Railing must be ordered as a separate item.

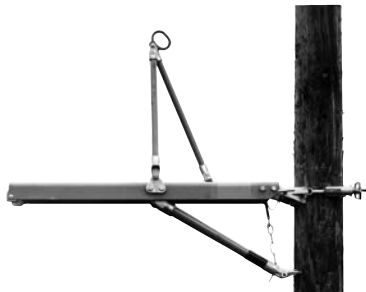
6-ft. Insulated Platform

Maximum Load Rating, all platforms: 500 lb.

## Non-skid surface

For improved footing, three strips of 2" non-skid tape extend the length of the platform working surface.

## Standard Aerial Platforms



4-ft. Standard Aerial Platform  
Epoxiglas Tripod must be ordered as separate item.

Chance Standard Platforms are designed to provide a convenient workstation on an aerial structure. They quickly mount

Maximum Load Rating, all platforms: 500 lb.

Each Standard Aerial Platform listed below is 10" wide and furnished with a Fixed Pole Mount

Catalog No.	Description	Weight
H496442W	42-in. Standard Platform	40 lb./18 kg.
H49644W	4-ft. Standard Platform	49 lb./22 kg.
H49646W	6-ft. Standard Platform	56 lb./25.2 kg.
H49648W	8-ft. Standard Platform	71 lb./32 kg.

Each Standard Aerial Platform below is 10" wide and furnished with an Epoxiglas Railing and Fixed Pole Mount

Catalog No.	Description	Weight
T4020632	10-ft. Standard Platform	86 lb./39.7 kg.
T4020619	12-ft. Standard Platform	105 lb./47.3 kg.

## U.S. Patent 4,641,727

Unique design features 12" of clear insulation provided by two 2"-diameter orange Epoxiglas poles connecting the platform to the mounting bracket. No other platforms include these insulating members, manufactured to the same exacting standards as Chance hot-line tools: OSHA subpart V, section 1926.951(d) and ASTM 711. Cleaning and care of Epoxiglas components are same as for Chance hot-line tools.

## Mounting options and accessories

To provide convenient workstations for rubber-glove work on energized lines, these platforms quickly secure to the pole with either of two mounts:

1. Fixed mount, for jobs that do not require frequent platform relocation, comes as part of each basic platform and includes a chain binder and wheel tightener.
2. Pivot mount, optional for easy positioning to access jobs, permits worker to swivel the mounted platform on its horizontal plane.

For belt-on/restraining guide, add optional Tripod or Railing.

Each Epoxiglas Insulated Platform listed below is 10" wide and furnished with a Fixed Pole Mount

Catalog No.	Description	Weight
C4021042	4-ft. Insulated Platform	49 lb./22 kg.
C4021043	6-ft. Insulated Platform	56 lb./25.2 kg.
C4021079	8-ft. Insulated Platform	60 lb./27 kg.



6-ft. Standard Aerial Platform  
Epoxiglas Railing must be ordered as separate item.

in position on the structure to place workers in the correct relationship to the work area.

## Mounting options and accessories

These platforms are furnished with a Fixed Pole Mount for maintenance jobs that do not require frequent platform relocation. Pivot Mounts (available below as optional accessories) allow the platform to be swiveled on its horizontal plane to different positions for a certain operations.

For belt-on and as restraining guides for workers, Epoxiglas Tripods or Railings may be added, see page 2357.

## Non-skid surface

For improved footing, three strips of 2" non-skid tape extend the length of the platform working surface. A bare section near the mounting end helps reduce moisture accumulation in inclement weather and provides an area between the working surface and the mount fittings that can be readily wiped clean of dirt and moisture when necessary.

# Suspension Platform

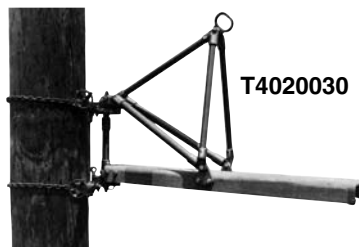
Constructed of the same material as Standard Platforms, the Suspension Platform design incorporates a special 26"-high Epioxiglas® tripod railing into the suspension brace. 10"-wide and furnished with a Pivot Mount, the platform is adjustable through a 180° horizontal range.

Platform capacity is 400 lb. in a position perpendicular to and directly in line with the structure. Capacity is reduced to 300 lb. in side-loading the platform pivot 90° to the left or right of an "in-line" position with the structure.

Catalog No.	Description	Weight
T4020030	48-in. Utility Platform	80 lb./36 kg.

## Non-skid surface

For improved footing, three strips of 2" non-skid tape extend the length of the platform working surface.



T4020030

# Utility Platform

Designed for limited workspace, 10"-wide Utility Platform is furnished with Fixed Pole Mount. Strut base folds against board for compact, for easy transport and storage.

Platform capacity is 400 lb. in a position perpendicular to and directly in line with the structure.

Catalog No.	Description	Weight
C4020426	30-in. Utility Platform	32½ lb./14.6 kg.

## Non-skid surface

For improved footing, three strips of 2" non-skid tape extend the length of the platform working surface.



C4020426

# Platform Mounting Attachments

## Fixed Pole Mount

– fits all Chance platforms except Suspension model

Catalog No.	Description	Weight
M490110W	Fixed Pole Mount for Platform	9 lb./4.1 kg.

## M490110W

includes 30" chain binder with self-locking handwheel and one hinge pin.



## Fixed Tower Mount

– fits all Chance platforms except Suspension model

For attachment to tower legs 3½" x 3½" to 8" x 8"

Catalog No.	Description	Weight
M490121	Fixed Tower Mount for Platform	10 lb./4.5 kg.



M490121 for towers

## Pivot Mounts for Poles

– fit all Chance platforms except Utility model

Handwheel on top and interlocking teeth on two pivot plates provide simple, sure adjustment to work angle needed. Two sizes vary in height to fit all applicable platforms as listed.

Pivot range permits 140° adjustment in increments of approximately 9° per tooth on matching plates. Turning handle raises and lowers upper plate; stainless-steel guide pin keeps plates aligned. Groove in upper plate centers on rib in base to assure teeth engagement at every angle setting.

Catalog No.	Description	Weight
C4021164	Pivot Base for 42" or 4' Platform	28¾ lb./12.7 kg.
C4021173	Pivot Base for 6' or 8' Platform	29¾ lb./13.2 kg.

Each Pivot Base includes two 30" chain binders with self-locking handwheels and one hinge pin.



# Platform Tripods and Railings

Epoxiglas® construction adds belt-on capability and restraining guide for lineworkers. Note specific applications below.

## Tripod Railings

– fit Insulated and Standard Aerial models as listed  
(for Suspension model tripod, consult factory)

Catalog No.	Description	Weight
H4964	Tripod for 4-ft. Insulated model only	9 lb./4.1 kg.
T4021195	Tripod for 42-in. or 4-ft. Standard model	9 lb./4.1 kg.

## Platform Railings

– fit Insulated and Standard Aerial models as listed

Catalog No.	Description	Weight
C4021055	Railing for 4-ft. Insulated Platform*	13 lb./5.9 kg.
C4020023	Railing for all 6-ft. Chance Platforms	15 lb./6.8 kg.
C4020024	Railing for all 8-ft. Chance Platforms	17 lb./13.5 kg.

\*except Suspension model



### Non-skid surface

For improved footing, three strips of 2" non-skid tape extend the length of the platform working surface.

## Platform Ladder

Stand or sit at the worksite instead of kneeling on the structure — for convenience and efficiency.

Proven products combine in the Chance Platform Ladder: 48"-long Epoxiglas® Ladder and two 20"-long sections of 10"-wide Platform joined side-by-side constitute a bosun's chair.

Adjustable ladder hooks may be added (see Catalog page 2355). Platform Ladder may be suspended and tagged-off with rope, wire tongs or a combination of both in order to maneuver a worker into position.

For quick rigging and easy storage, Platform Ladder folds into a neat, compact package.

Although the Platform Ladder is rated for loads to 500 pounds, users must give serious consideration to the capacity of the point from which it is suspended and the equipment used to suspend it.

Catalog No.	Description	Weight
C4020276	Platform Ladder, no hooks	36 lb./16.2 kg.

## Epoxiglas® Service Ladders

Service Ladders of Epoxiglas offer greater safety when working around energized lines. Because they are much lighter than comparable wood ladders they are easier to transport. Spacing between side rails and rung spacings are in accordance with the specifications of the largest central station and telephone companies. Side rails of 1½"-diameter Epoxiglas are plastic-covered at the top for cushioning. Rubber feet are supplied on bottom end. Rungs are of 13/16"-diameter glass fiber.

Catalog No.	Overall Length	Spacing Between Side Rails	Approx. Wt., Ea.
H4903M10	10'-1"	12"	16 lb.
H4903M12	12'-1"	12"	19 lb.

