

# Technor

## Control Station and Junction Box

### XAWE



This new control station range consist of 2 different sizes allowing from 1 to 3 Harmatex control- and signalling units/indicators in each unit. The 2 sizes can be connected together in various combinations.

- Compact but still user friendly when it comes to wiring.
- Flexible system such as a variety of configurations can be utilized
- Can be delivered with terminal
- Standard fitted with polyamide cable glands and plug



WWW.CABLEJOINTS.CO.UK  
THORNE & DERRICK UK  
TEL 0044 191 490 1547 FAX 0044 477 5371  
TEL 0044 117 977 4647 FAX 0044 977 5582  
WWW.THORNEANDDERRICK.CO.UK



## Control Station and Junction Box

XAWE is a new range of polyamide boxes. It consists of individual boxes that can be equipped with 1 to 3 Harmatex control and signalling units. A specific device allows assembling several boxes to obtain numerous configurations and combinations.

### Benefits

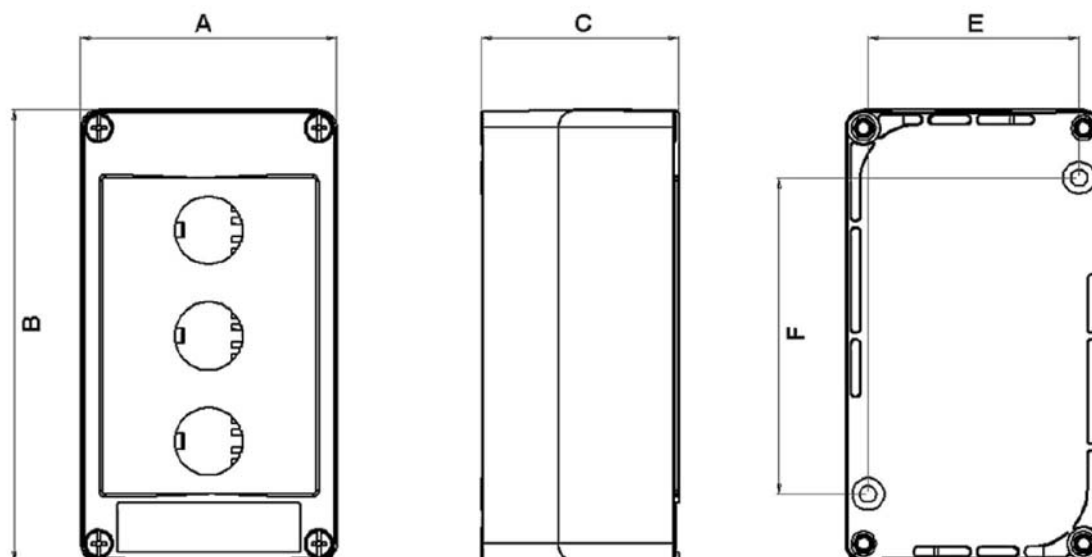
- Its particular design gives a much better access to the terminals or contact blocks for an easier wiring compared to the traditional housings.
- Optimized for use with our HARMATEX control and signalling units including the new contact block 16A and the multitension pilot light
- Coupling device to perform pre-equipped control stations with more than 3 pushbuttons
- Available with ammeter
- For armoured cable, earth continuing plate can be provided



### Specifications

|               |   |
|---------------|---|
| Material      | Polyamide   |
| IP Rating     | IP 65-66  |
| Temperature   | -20°C to +40°C<br>(50°C and 60°C depending on configuration)                                    |
| Approval Atex | INERIS 03ATEX0122   |
| Standards     | CENELEC EN60079-0, EN60079-1, EN60079-7, EN60079-18, EN61241-0, EN61241-1                       |
| Ex-Code       | Ex II 2 GD<br>Ex e II<br>Ex e mb II<br>Ex d e IIC<br>Ex tD A21<br>....or a combination of these |

### Dimensions



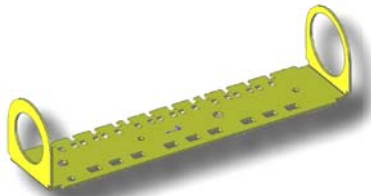
| Box                             | A (mm) | B (mm) | C (mm) | D (mm) | E (mm)           | F (mm)            |
|---------------------------------|--------|--------|--------|--------|------------------|-------------------|
| <b>XAWE1...</b> (XAWE2812/9104) | 85     | 85     | 65     |        | 74 <sup>1)</sup> | 54 <sup>1)</sup>  |
| <b>XAWE3...</b> (XAWE21)        | 150    | 85     | 65     | 45     | 54 <sup>2)</sup> | 105 <sup>2)</sup> |
| <b>XAWE3... + XAWE1</b>         | 236    | 85     | 65     | 45     | 54 <sup>2)</sup> | 105 <sup>2)</sup> |

D=distance between 2 pilot lights and switches

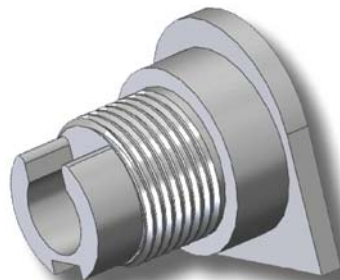
<sup>1)</sup> Fixing by screw CH M4

<sup>2)</sup> Fixing by screw CH M5

### Options



Earth continuity plate for use  
with armoured cable/cable gland  
XAWE-PU



Interconnection coupling for  
assembling several boxes together  
XAWE-TP



### Order Information

| Function   | Labels (pushbutton color), contact function                          | Insulated box and unit |
|--|--|------------------------|
| 1 pushbutton, spring return                            | Start (green), 1NC   | XAWE10                 |
| 1 pushbutton, spring return                            | Stop (red), 1NC  | XAWE11                 |
| 1 mushroom pushbutton Ø40 mm, spring return            | Stop (red), 1NC  | XAWE16                 |
| 1 mushroom pushbutton Ø40 mm, latching turn to release | Stop (red), 1NC  | XAWE17                 |
| 1 selector switch, 2 positions stay put                | Start/Stop, 1NO  | XAWE13                 |
| 2 pushbuttons, spring return                           | Start (green), 1NO - Stop (red), 1NC                                 | XAWE21                 |
| 3 pushbutton, spring return                            | Forward (green), 1NO - Stop (red), 1NC - Reverse (green), 1 NO       | XAWE31                 |
| 1 pilot light, 2 pushbuttons, spring return            | Red light unit 24-415V AC/DC<br>Start (green), 1NO - Stop (red), 1NC | XAWE34                 |
| 1 ammeter  |  | XAWE2812               |
| Function   | Terminal functions   | Insulated box and unit |
| 5 terminals  | 3P + T + N   | XAWE9104               |
| Function   | Cable gland (number and type)  | Insulated box and unit |
| Empty box prepared for 1 control and signalling unit   | 1 cable gland M20 + 1 plug M20                                       | XAWE101                |
| Empty box prepared for 2 control and signalling units  | 1 cable gland M20 + 1 plug and 1 cable gland M25 + 1 plug            | XAWE302                |
| Empty box prepared for 3 control and signalling units  | 1 cable gland M20 + 1 plug and 1 cable gland M25 + 1 plug            | XAWE303                |

Standard cable gland from Ø8 - Ø16 mm cables



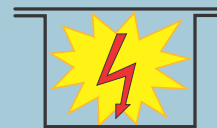
### Zone Classification with the presence of DUST

|         |  |
|---------|--|
| Zone 21 | An area in which an explosive atmosphere in the form of a cloud of combustible dust in air is likely to occur in normal operation of the plant.  |
| Zone 22 | A place in which an explosive atmosphere in the form of a cloud of combustible dust in air is not likely to occur in normal operation, if it does occur, will persist for a short period only. |

### Applicable EX protection

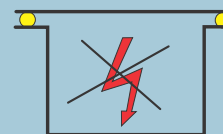
#### Ex d Protection

Parts, which can ignite a potentially explosive atmosphere, are surrounded by an enclosure, which are designed to withstand the pressure of an internal explosion and to prevent the propagation of the explosion to the atmosphere surrounding the enclosure.



#### Ex e Protection

for electrical components that do not spark under normal working conditions but where measures are applied to prevent high temperatures and the occurrence of arcs and sparks internally.



### Zone Classification with the presence of GAS

|                        |   |
|------------------------|---|
| Zone 1<br>(Category 2) | An area in which explosive gas is likely to be present during normal operation of the plant.          |
| Zone 2<br>(Category 3) | An area in which explosive gas is not continuously present, but may exist for a short period of time. |

