

**Now available from Hawke International**  
***The PL6I2 Enclosure Populated as a Standard Offering***



- **The Ultimate in Robust GRP Construction**  
Designed to withstand impact resistance up to 20Nm  
GRP Construction provides a high degree of resistance to corrosive atmospheres
- **Anti-Static Properties**  
Removes the risk of ignition sources through static induced sparking resistivity  
Insulation Resistance less than 1 GΩ
- **External Mounting Feet**  
Eliminates the need to remove the lid when mounting the enclosure on the wall
- **Corrosion Resistant Stainless Steel Lid Fixing Screws with Nylon Retaining Washers**  
Prevents loss of screws during assembly and maintenance
- **Durable Captive Moulded Silicone Gasket**  
Provides Ingress Protection to IP66 and IP67  
DTS01 deluge protection witnessed by EECS
- **Stainless Steel Rating Label**  
Highly durable and corrosion resistant

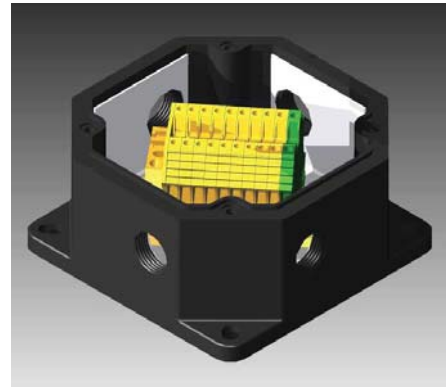
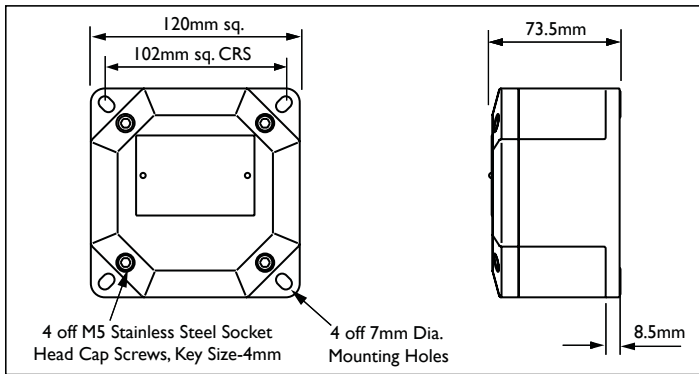


# Enclosure Type Glass Reinforced Polyester PL612 Increased Safety Exe

Now available from Hawke International  
The Dual ATEX/IECEX Approved PL612 Enclosure

| TERMINAL DATA         |               |                      |                                   |      |            |           |
|-----------------------|---------------|----------------------|-----------------------------------|------|------------|-----------|
| Terminal Manufacturer | Terminal Type | Terminal Quantity    | Conductor Size (mm <sup>2</sup> ) |      | Max. Volts | Max. Amps |
|                       |               |                      | Min.                              | Max. |            |           |
| Weidmuller            | WDU 2.5N      | 12<br>+ 1 Rail Earth | 0.5                               | 2.5  | 420        | 16        |
| Weidmuller            | WDU 2.5       | 10<br>+ 1 Rail Earth | 0.5                               | 2.5  | 550        | 17        |

**Note:** Terminals listed are only suitable for a minimum operating temperature of -50°C.



PL6 Series GRP Enclosures

## Technical Data

- Increased Safety Exe.  $\text{Ex II 2 GD Exe II, ExtD}$ .
- PL612 BASEEFA Certificate No. BAS 01 ATEX 2107X. Baseefa 06ATEX0117X. IECEx BAS 06.0028X.
- ZPL612 BASEEFA Certificate No. BAS 01 ATEX 2101U. Baseefa 06ATEX0116U. IECEx Bas 06.0027U.
- Suitable for use in Zone 1, Zone 2, Zone 21 & Zone 22.
- Construction and test standards IEC 60079-0, IEC 60079-7, IEC 61241-0 and IEC 61241-1. EN 60079-0, EN 60079-7, EN61241-0 and EN 61241-1.
- IP66 and IP67 ingress protection to IEC 60529 and EN 60529.
- DTS01 deluge protection witnessed by EECS.
- Operating temperature range -60°C to +75°C.
- Temperature Class and Ambient T6 40°C. Optional T5 with ambients up to 65°C.
- Assembly instruction data sheet No. A.I. 273. For PL612.

## General Information

Standard PL612 Enclosures are supplied complete with :-

- Steel Earth Continuity Plate.
- 1 x M20 offset tapped entry per face. (ENTRIES NOT PLUGGED).

## Features

- The Ultimate in Robust GRP Construction
- Anti-Static Properties
- External Mounting Feet
- Corrosion Resistant Stainless Steel Lid Fixing Screws with Nylon Retaining Washers
- Durable Captive Moulded Silicone Gasket
- Stainless Steel Rating Label

Please note :-

Hawke still offers enclosures to customer specifications, available from our Box Modifiers

## Materials & Finishes

Glass Reinforced Polyester. Natural Black Finish.  
Flame Retardant to IEC 92.1. Clause 2.38.

Connection Solutions  
www.ehawke.com



CABLE JOINTS, CABLE TERMINATIONS, CABLE GLANDS, CABLE CLEATS  
FEEDER PILLARS, FUSE LINKS, ARC FLASH, CABLE ROLLERS, CUT-OUTS

11KV / 33KV CABLE JOINTS & CABLE TERMINATIONS  
FURSE EARTHING  
www.cablejoints.co.uk  
Thorne and Derrick UK

Tel 0044 191 490 1547 Fax 0044 191 477 5371  
Tel 0044 117 977 4647 Fax 0044 117 9775582

HAWKE

HWK106 Sept '08

