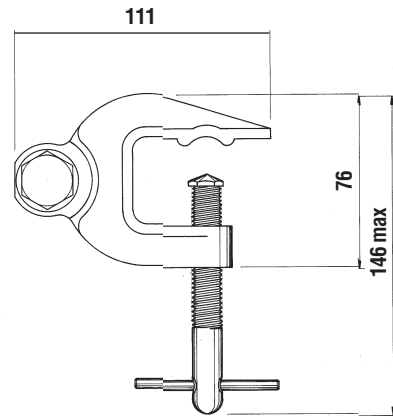


Earth End Clamp S9A

Code S9A /A/TB/PT/135H

Fitted with Hardened Steel Tip.
 For up to 20mm thick bars.

Tested to 17.5kA for 2 seconds.

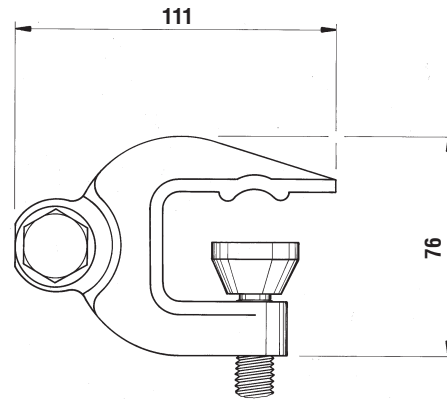


Earth End Clamp S9A

Code S9A /A/-/RB/135H

Fitted with Aluminium Alloy Rocker Block
 For 12.7mm thick bars and for 6.4 to 20mm round conductors.

Tested to 17.5kA for 2 seconds.

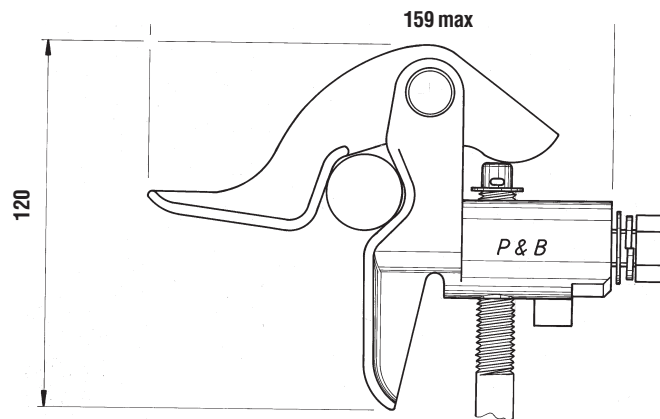


Earth End Clamp S9B

Code S9B

For 6.3mm to 38mm diameter conductors.

Tested to 17.5kA for 2 seconds.

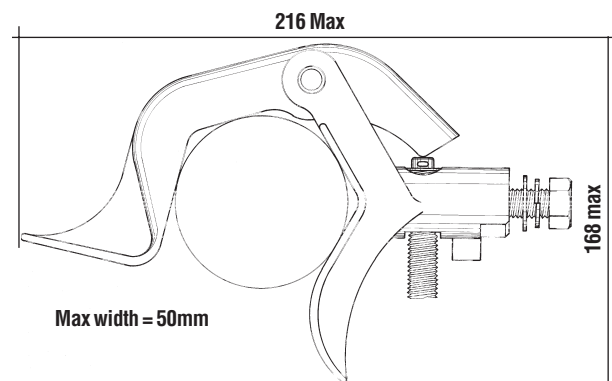


Earth End Clamp S9C

Code S9C

For 38mm to 76mm diameter conductors

Tested to 17.5kA for 2 seconds.



All sizes are in Millimetres