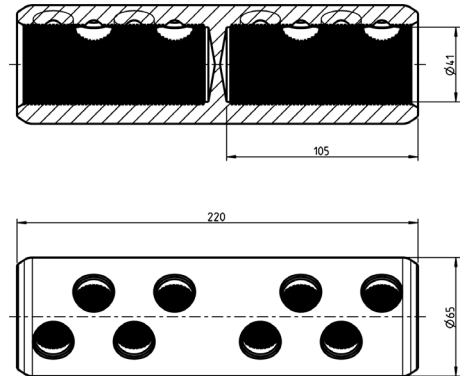




WWW.CABLEJOINTS.CO.UK
THORNE & DERRICK UK
 TEL 0044 191 490 1547 FAX 0044 477 5371
 TEL 0044 117 977 4647 FAX 0044 977 5582
 WWW.THORNEANDDERRICK.CO.UK

• GPH • M630-1000 Mechanical connector

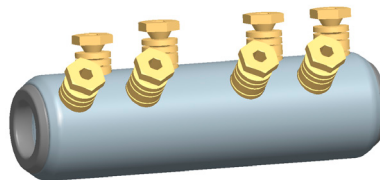
NEW



With the new mechanical connector **GPH M630-1000** the NPAG offers the **widest range of MV connectors tested according to IEC:**

Worldwide unique: **With only four connectors**

- M16-95
- M70-240
- M300-500
- M630-1000

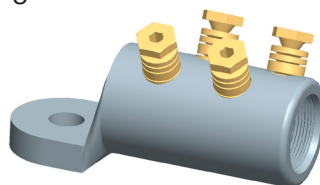


the cross section range from 16 to 1000 mm² is fully covered.

For other cross sections further five connectors as well as six transition connectors are available.

The mechanical connector is used especially at **wind parks** that are connected to the medium-voltage power grid and to other high performance MV connections in the network.

A suitable mechanical cable lug **GPH C630-1000** is also available.



Clamping range:

- Al round stranded:
630 - 1000 mm²
- Al round solid:
630 - 1000 mm²
- Cu round stranded:
630 - 800 mm²

Material and surfaces:

- Connector body: high strength aluminium alloy
- Bolts: brass, with allen key and hexagon head
- All surfaces tin-plated

Centering rings:

- Special centering rings for conductor alignment are available on request

