

Earth rod clamps

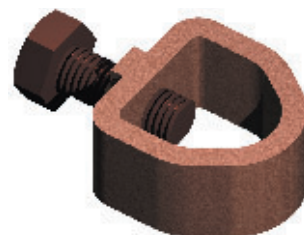
Where permanent connections are not appropriate, mechanical clamps offer the ideal solution. These are typically used on smaller scale installations where periodic disconnection for testing is required.

All Furse mechanical clamps are manufactured from high copper content alloy. They have high mechanical strength, excellent corrosion resistance and conductivity.

Corrosion resistance, conductivity and mechanical strength are essential considerations in clamp design to ensure an earthing system remains operative for many years. All Furse earth rod clamps have high strength copper alloy bodies and screws eg. aluminium bronze, phosphor bronze, etc; **commercial brass is not used.**

Rod to cable clamp (type G)

CR105



Rod to cable clamp (type G)

CR515



Rod to cable clamp (type GUV)

CR700



Earth inspection pits

Regular inspection and testing of the earthing system is essential. Inspection pits allow easy access to earth electrodes and conductors to facilitate this procedure.

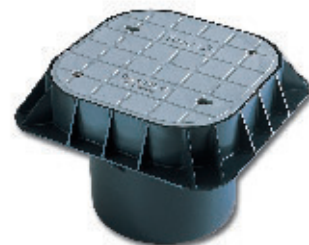
Lightweight inspection pit

PT205

The lightweight inspection pit weighs only 1.8kg yet is load rated to 5,000kg. It has a lockable lid and improved working area compared to the concrete inspection pit.

An integral earth bar is available as an optional extra.

Manufactured from high-performance polymer, the lightweight pit is UV stable and chemically resistant.

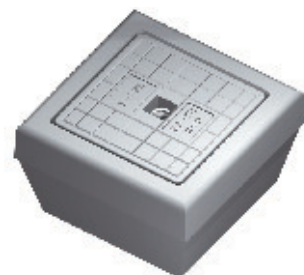


Concrete inspection pit

PT005

The concrete inspection pit is load rated to 4,500kg and is suitable for most types of earthing and lightning protection installations.

It is not suitable for use in areas where high load, small wheel vehicles are used. The lightweight inspection pit (PT205) is recommended for this type of application.



WWW.CABLEJOINTS.CO.UK
THORNE & DERRICK UK
 TEL 0044 191 490 1547 FAX 0044 191 477 5371
 TEL 0044 117 977 4647 FAX 0044 117 977 5582
 WWW.THORNEANDDERRICK.CO.UK