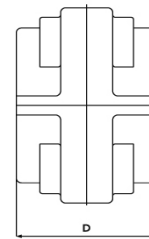
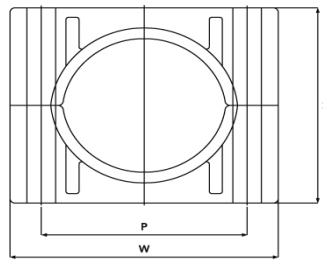
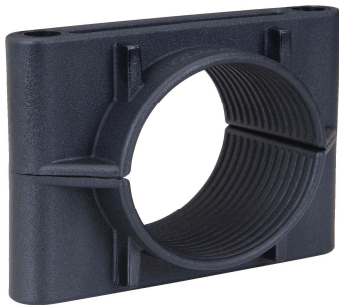


Two Hole Cableclamp (2F) Data Sheet

Manufactured as standard in black polypropylene (B), black flame retardant V0 zero halogen phosphorus free Nylon (LSF) or to special order in a London Underground approved material (LUL).(Material data sheets are available on request). **UK Design Reg. No. 355854.** Used to fix power cables in indoor and outdoor applications.



Selection Table for Two Hole Cable Clamps

| Part No | Material Suffix | Cable Dia. Range mm | Dimensions | | | | Fixing Hole | Pack Qty. | Weight g | | |
|---------|-----------------|---------------------|------------|------|------|------|-------------|-----------|----------|-------|-------|
| | | | W mm | H mm | D mm | P mm | | | B | LSF | LUL |
| 2F-07 | B/LSF/LUL | 38-46 | 92 | 60 | 54 | 68 | 2 x M10 | 25 | 73.0 | 91.0 | 119.0 |
| 2F-08 | B/LSF/LUL | 46-51 | 103 | 71 | 54 | 79 | 2 x M10 | 25 | 80.9 | 109.9 | 132.0 |
| 2F-09 | B/LSF/LUL | 51-57 | 103 | 76 | 54 | 79 | 2 x M10 | 25 | 95.0 | 119.0 | 155.0 |
| 2F-10 | B/LSF/LUL | 57-64 | 103 | 82 | 54 | 79 | 2 x M10 | 25 | 89.1 | 122.5 | 156.5 |
| 2F-11 | B/LSF/LUL | 64-70 | 130 | 89 | 54 | 106 | 2 x M10 | 15 | 116.0 | 157.3 | 189.0 |
| 2F-1200 | B/LSF/LUL | 70-76 | 130 | 95 | 54 | 106 | 2 x M10 | 15 | 124.0 | 167.3 | 202.0 |
| 2F-1201 | B/LSF/LUL | 76-83 | 130 | 100 | 54 | 106 | 2 x M10 | 10 | 126.0 | 170.0 | 205.0 |
| 2F-1202 | B/LSF/LUL | 83-90 | 130 | 108 | 54 | 106 | 2 x M10 | 10 | 128.0 | 172.0 | 208.0 |
| 2F-131 | B/LSF/LUL | 90-97 | 150 | 115 | 54 | 126 | 2 x M10 | 5 | 152.0 | 208.0 | 248.0 |
| 2F-132 | B/LSF/LUL | 97-105 | 150 | 122 | 54 | 126 | 2 x M10 | 5 | 156.0 | 208.0 | 254.0 |
| 2F-141 | B/LSF/LUL | 105-112 | 161 | 130 | 54 | 135 | 2 x M10 | 5 | 179.5 | 238.8 | 292.0 |
| 2F-142 | B/LSF/LUL | 112-120 | 169 | 138 | 54 | 143 | 2 x M10 | 5 | 193.5 | 261.0 | 315.4 |
| 2F-151 | B/LSF/LUL | 120-128 | 177 | 148 | 54 | 151 | 2 x M10 | 5 | 212.2 | 280.0 | 346.0 |
| 2F-152 | B/LSF/LUL | 128-135 | 185 | 158 | 54 | 158 | 2 x M10 | 5 | 228.5 | 304.4 | 372.4 |



London Underground

The LUL version of the 2F Two Hole Cableclamps are compliant with the requirement of London Underground Standard 1-085. Product Register No. 364.

Testing Information

Two Hole Cable Clamps have been tested in line with the International Standard of "Cable Cleats for Electrical Installations" IEC 61914: 2009. Typical results below.

| Properties | IEC 61914:2009 Classification Clause | Units / Classification B | Units / Classification LSF | Test Data B | Test Data LSF |
|--|--------------------------------------|----------------------------|---|-------------------------|---|
| Cleat Type | 6.1, 6.1.3 | Non Metallic | Non Metallic | - | - |
| Impact Resistance | 6.2, 6.3.5, 9.2 | Very Heavy Classification | Very Heavy Classification | Pass | Pass |
| Resistance to Electro Mechanical Force <i>(Undertaken at Damstra Laboratories NL)</i> | 6.4, 6.4.3, 9.5 | Refer to Ellis Patents. | kA @ 600mm Centres. 4 Core SWA Cable (3 cores used) | Refer to Ellis Patents. | 76 Peak <i>(Report No. PDL-10.150)</i> |
| Temperature for Permanent Application | 6.2 | oC | oC | -40 to 40 | -40 to 60 |
| Needle Flame Test | 10.0, 10.1 | Application Time (seconds) | Application Time (seconds) | >30 | >120 |
| Lateral Load Test | 9.3 | Newtons (N) | Newtons (N) | 7330 | 18400 |
| Axial Movement Test | 9.4 | Newtons (N) | Newtons (N) | 1220 | 1200 |