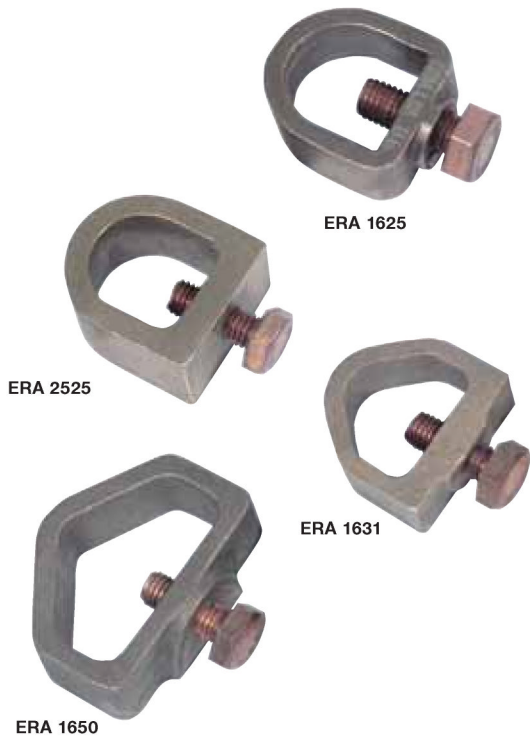


Earth Rod to Tape 'A' Clamps

These clamps are used for joining earth rods to different sizes of copper tape. The clamps have a high resistance to corrosion and are mechanically strong to ensure a lasting connection.



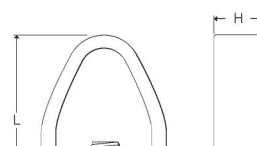
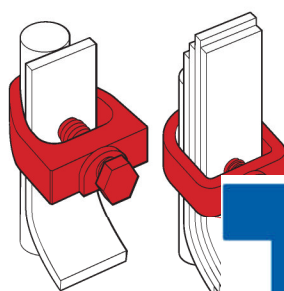
Earth Rod Shank Ø mm	Maximum Tape Size mm	L mm	W mm	H mm	Unit Weight kg	Pack Quantity	Part Number
12.7	26 x 15	43	37	17	0.10	50	ERA 1625
	32 x 15	43	45	18	0.20	25	ERA 1631
	39 x 15	44	51	22	0.25	25	ERA 1638
14.2	26 x 14	43	37	17	0.10	50	ERA 1625
	32 x 14	43	45	18	0.20	25	ERA 1631
	39 x 14	44	51	22	0.25	25	ERA 1638
	51 x 16	47	64	20	0.21	25	ERA 1650
15.0	26 x 13	43	37	17	0.10	50	ERA 1625
	32 x 13	43	45	18	0.20	25	ERA 1631
	39 x 13	44	51	22	0.25	25	ERA 1638
	51 x 15	47	64	20	0.21	25	ERA 1650
16.0	26 x 12	43	37	17	0.10	50	ERA 1625
	32 x 12	43	45	18	0.20	25	ERA 1631
	39 x 12	44	51	22	0.25	25	ERA 1638
	51 x 14	47	64	20	0.21	25	ERA 1650
17.2	26 x 11	43	37	17	0.10	50	ERA 1625
	32 x 11	43	45	18	0.20	25	ERA 1631
	39 x 11	44	51	22	0.25	25	ERA 1638
	51 x 13	47	64	20	0.21	25	ERA 1650
	26 x 18	55	40	25	0.20	10	ERA 2525
20.0	26 x 8	43	37	17	0.10	50	ERA 1625
	32 x 8	43	45	18	0.20	25	ERA 1631
	39 x 8	44	51	22	0.25	25	ERA 1638
	51 x 10	47	64	20	0.21	25	ERA 1650
	26 x 16	55	40	25	0.20	10	ERA 2525
25.0	26 x 11	55	40	25	0.20	10	ERA 2525

Material: Aluminium Bronze with M10 x 25mm Phosphor Bronze Set Screw.

The aluminium version is mainly used for connecting aluminium tape to a puddle flange rod as part of a lightning protection system.

Rod Shank Ø mm	Maximum Tape Size mm	L mm	W mm	H mm	Unit Weight kg	Pack Quantity	Part Number
16.0	26 x 12	44	40	19	0.60	25	ERA 1625A

Material: Aluminium with M10 x 25mm Stainless Steel Set Screw.



CABLE JOINTS, CABLE TERMINATIONS, CABLE GLANDS, CABLE CLEATS
FEEDER PILLARS, FUSE LINKS, ARC FLASH, CABLE ROLLERS, CUT-OUTS

11KV 33KV CABLE JOINTS & CABLE TERMINATIONS
FURSE EARTHING
www.cablejoints.co.uk
Thorne and Derrick UK

Tel 0044 191 490 1547 Fax 0044 191 477 5371
Tel 0044 117 977 4647 Fax 0044 117 9775582