**RIDGIDUCT LIGHTING →**

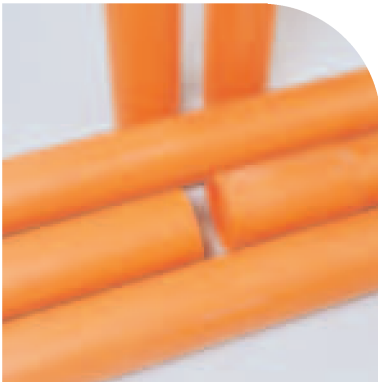
Ridgiduct lighting is a twin wall low weight flexible duct system, specifically manufactured in orange for use in street lighting and traffic signals applications. A full range of access and junction boxes, bends, reducers and adaptors completes the system.

Ridgiduct Lighting

Nom. Size	O.D. mm	Length	Product Code
94	110	6m	RB94X60(SL or TS)
100	118	6m	RB100X60(SL or TS)
150	178	6m	RB150X60(SL or TS)

Ridgiduct Lighting features include:

- Impact resistance, even at low temperatures
- Flexible in application, with a minimal requirement for special bends
- BBA approved and complies with BS EN 50086-2-4
- Available with print options for traffic signals and street lighting

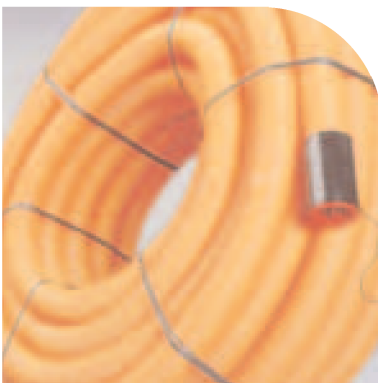
**POLYDUCT LIGHTING →**

Polyduct lighting is a single wall alternative to twin wall ducts. Manufactured in orange MDPE or HDPE. It can be used in either open trench or trenchless applications.

Polyduct Lighting

O.D. mm	I.D. mm	Wall Thickness	Length (m)	Product Code
60	50	5	6	PD5060X60(TS or SL)
63	56	3.5	6	PD5663X60(TS or SL)
107	97	5	6	PD97107X60(TS or SL)

Available with street lighting or traffic signal print. Please specify with order.

**RIDGICOIL LIGHTING →**

Ridgicoid's flexibility eliminates the need for special bends and the smooth bore has a low co-efficient of friction for ease of cable installation.

Ridgicoid Lighting

Code	O.D. mm	I.D. mm	Length
RC65X500 (SL or TS)	63	50	50m
RC110X500 (SL or TS)	110	94	50m

Ridgicoid Lighting features:

- Compliance with EN 50086-2-4: Type 450N, normal duty impact resistance
- Long coil lengths for reduced jointing
- Factory installed draw cord and coupling

LIGHTING IN SCOTLAND →**Lighting in Scotland**

Description	Nom. Size	I.D. mm	Product Code
100m coil	60	53	SSL60X100P
40m coil	100	90	SSL100X40P

Purple as standard. Other colours available on request. Minimum order 50 coils.

Lighting in Scotland has specific requirements and for this purpose Polypipe Civils manufacture a single wall polypropylene duct range.

**ACCESS BOXES →**

Polypipe Civils offers a comprehensive range of 5 duct access boxes in single, double or triple height units.

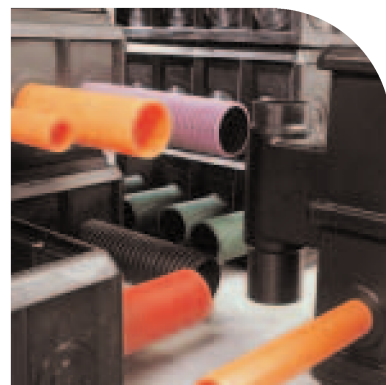
Access Boxes

Product Code	Description	Height mm	Box opening* mm		External mm	
			Width	Depth	Width	Depth
AC2902751	290x275 Single Unit	300	325	310	390	375
AC4503001	450x300 Single Unit	300	485	335	550	400
AC4503002	450x300 Double Unit	640	485	335	550	400
AC4503003	450x300 Triple Unit	980	485	335	550	400
AC4504501	450x450 Single Unit	300	470	470	550	550
AC4504502	450x450 Double Unit	640	470	470	550	550
AC4504503	450x450 Triple Unit	980	470	470	550	550
AC6004501	600x450 Single Unit	300	635	485	700	550
AC6004502	600x450 Double Unit	640	635	485	700	550
AC6004503	600x450 Triple Unit	980	635	485	700	550
AC6006001	600x600 Single Unit	300	635	635	700	700
AC6006002	600x600 Double Unit	640	635	635	700	700
AC6006003	600x600 Triple Unit	980	635	635	700	700

* The clear opening for boxes is greater than the clear opening for frames. See the relevant tables for details of clear openings of frames.

Access box features include:

- Robust, single-piece injection or rotational mouldings
- High strength, structured wall construction
- Manufactured in impact resistant polyethylene for installation in all conditions
- Corrosion free and chemical resistant material
- Ultraviolet light resistant material, suitable for extended storage periods
- Light, easy to handle, transport and install
- Provision of guaranteed cover to the ducting of 450 or 750mm for double and triple height units
- Modular construction, allowing access boxes to be used as rising sections as required
- Pre-trepanned points of entry to accommodate 54, 63, 110 and 118mm outside diameter ducting, covering the full range of products in the industry
- Supplied black as standard, other colours may be available subject to order quantity and lead times

**POLE BOXES →**

The range of 4 pole boxes is available in 290x275mm and 450x450mm sizes, incorporating integral housings for 114 and 140mm poles and are manufactured from polyethylene. The pole box provides 450mm depth of cover as standard, extendable if required using modular access boxes as rising sections.

Pole Boxes

Product Code	Description	Height mm	Box opening* mm		External mm		Pole Box mm
			Width	Depth	Width	Depth	
PB2902751	290x275	640	325	310	680	400	114
PB2902752	290x275	640	325	310	680	400	140
PB4504501	450x450	640	470	470	875	600	114
PB4504502	450x450	640	470	470	875	600	140

* The clear opening for boxes is greater than the clear opening for frames.



**COMPOSITE COVERS →**

New advanced skid resistance composite covers are available for the range of access, pole and signal boxes. Manufactured in high strength, fibre-reinforced polyester resin and to BS EN 124 Class B 125.

Composite Covers	
Product Code	Nominal Size mm
CC290275	290 x 275
CC450300	450 x 300
CC450450	450 x 450
CC600450	600 x 450
CC600600	600 x 600

→ Locking systems also available

Performance

In tests the unique anti-slip composite covers achieve a SRV (Skid Resistance Value) far in excess of minimum limits set by the Country Surveyors Society working party data collection unit 1-96.

Skid Resistance Values	
Test	Value
Dry Test	SRV87
Wet Test	SRV76
Equilibrium Wet Test	SRV64

Frame sold separately

GALVANISED STEEL COVERS →

Galvanised steel covers and frames are manufactured to the FACTA (Fabricated Access Cover Trade Association) Class B specification, equivalent to BS EN 124 Class B 125.

Galvanised Steel Covers & Frames	
Product Code	Clear Opening mm
GCF290275	290 x 275
GCF450300	450 x 300
GCF450450	450 x 450
GCF600450	600 x 450
GCF600600	600 x 600

Typical places of installation include areas subject to slow moving wheel loads, including footways, pedestrian areas, car parks and verges.

DUCTILE IRON COVERS & FRAMES →

Ductile iron access box covers are manufactured to BS EN 124 Class B 125.

Ductile Iron Covers & Frames		
Product Code	Clear Opening mm	A mm
DCF450450	450 x 450	100
DCF600450	600 x 450	60
DCF600600	600 x 600	60