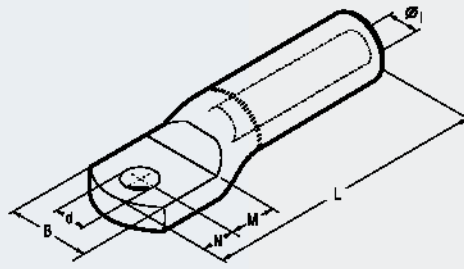


# ALUMINIUM TERMINALS

## AA-M



AA-M series terminals are made from aluminium of a purity equal to or greater than 99.5%.

They are designed to accept a variety of conductor forms especially low stranded compacted conductors.

Non circular conductors may require pre-rounding prior to introduction to the terminal.

Barrels are capped and filled with grease so as to avoid oxidation of the aluminium.

| Conductor Size<br>sqmm | Ø<br>Stud<br>mm | Ref.           | Dimensions mm |    |    |    |       |      | Quantity<br>Box/Bag | Hydraulic<br>Tools                 |
|------------------------|-----------------|----------------|---------------|----|----|----|-------|------|---------------------|------------------------------------|
|                        |                 |                | Øi            | B  | M  | N  | L     | d    |                     |                                    |
| 16                     | 8               | AA 16-M 8      | 5,5           | 21 | 13 | 11 | 77,0  | 8,4  | 60/3                | HT 131-UC<br>RHU 131-C<br>B 131-UC |
| 25                     | 8               | AA 25-M 8      | 6,5           | 21 | 13 | 11 | 77,0  | 8,4  | 60/3                |                                    |
| 35                     | 8               | AA 35-M 8      | 8,0           | 23 | 13 | 11 | 77,5  | 8,4  | 60/3                |                                    |
|                        | 10              | AA 35-M 10     | 8,0           | 23 | 13 | 11 | 77,5  | 10,5 | 60/3                |                                    |
| 50                     | 12              | AA 50-M 12     | 9,0           | 26 | 16 | 14 | 91,0  | 13,2 | 60/3                |                                    |
|                        | 14              | AA 50-M 14     | 9,0           | 26 | 18 | 16 | 95,0  | 15,0 | 60/3                |                                    |
| 70                     | 12              | AA 70-M 12     | 11,0          | 27 | 16 | 14 | 91,0  | 13,2 | 45/3                |                                    |
|                        | 14              | AA 70-M 14     | 11,0          | 27 | 18 | 16 | 95,0  | 15,0 | 45/3                |                                    |
| 95                     | 12              | AA 95-M 12     | 12,5          | 27 | 16 | 14 | 91,0  | 13,2 | 45/3                |                                    |
|                        | 14              | AA 95-M 14     | 12,5          | 27 | 18 | 16 | 95,0  | 15,0 | 45/3                |                                    |
| 120                    | 12              | AA 120-M 12    | 13,7          | 35 | 16 | 14 | 115,0 | 13,2 | 30/3                |                                    |
|                        | 14              | AA 120-M 14    | 13,7          | 35 | 18 | 16 | 119,0 | 15,0 | 30/3                |                                    |
| 150                    | 12              | AA 150-M 12    | 15,5          | 34 | 16 | 14 | 115,0 | 13,2 | 30/3                |                                    |
|                        | 14              | AA 150-M 14    | 15,5          | 34 | 18 | 16 | 119,0 | 15,0 | 30/3                |                                    |
| 185                    | 12              | AA 185-M 12    | 17,0          | 42 | 20 | 14 | 122,0 | 13,2 | 18/3                |                                    |
|                        | 14              | AA 185-M 14    | 17,0          | 42 | 22 | 16 | 126,0 | 15,0 | 18/3                |                                    |
| 240                    | 12              | AA 240-M 12    | 19,5          | 44 | 20 | 14 | 122,0 | 13,2 | 15/3                |                                    |
|                        | 14              | AA 240-M 14    | 19,5          | 44 | 22 | 16 | 126,0 | 15,0 | 15/3                |                                    |
| 300                    | 12              | AA 300-34-M 12 | 22,5          | 47 | 22 | 14 | 130,0 | 13,2 | 15/3                |                                    |



WWW.CABLEJOINTS.CO.UK

THORNE & DERRICK UK

TEL 0044 191 490 1547 FAX 0044 477 5371

TEL 0044 117 977 4647 FAX 0044 977 5582

WWW.THORNEANDDERRICK.CO.UK

