

24V
3.3Ah
Ni-MH

HYDRAULIC PUMPS



B70M-P24

Portable electro-hydraulic pump, operating at 24V dc by battery for independent use, developing 700 bar pressure; it features an integral socket for connection to an external 24 V dc supply. It is also available insulated and operated by remote pneumatic hand controller and supplied with an non-conductive hose.

B70M-P24 is supplied with:

- 3 m flexible hose complete with male + female 3/8" NPT self-lock quick couplers
- Remote control
- Shoulder strap
- External battery charger
- Canvas holdall for carrying accessories

| Operating pressure bar | Dimensions mm | | | Weight kg |
|------------------------|---------------|-------|--------|-----------|
| | length | width | height | |
| 700 | 390 | 163 | 323 | 9,2* |

**without accessories*

Available as optional accessories:

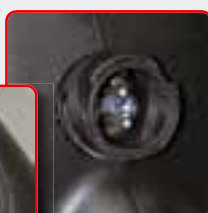
- Spare 24V dc battery
- 24 V dc external supply connection cables:
 - ESC 300 CEE with 24 V dc CEE type plug (3 m length)
 - ESC 600 with crocodile clips (6 m length)
- RCP-B70 remote foot pedal controller
- ERCH-WH remote hand controller (adjustable on 3 m length flexible hose)
- TRS-B70 canvas rucksack (for carrying the pump)
- SH-B70 hook (for hanging the pump from a ladder)

Remote electrical hand or foot controller connection

24V dc external power supply socket with protective cap



Easily accessible oil top-up inlet



High pressure hose connects to automatic self-lock quick coupling with protective cap

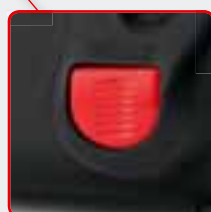
- 1 Powerful 24V 3.3Ah Ni-MH battery.
- 2 Plug-in remote hand controller with bezel-locking electrical connector.
- 3 3metre, high pressure flexible hose with automatic self-lock, quick couplers.
- 4 Self-ventilating battery charger for in-house use.
- 5 Shoulder strap for attachment to rings provided on pump.
- 6 Canvas accessories bag.



Powerful 24V Ni-MH rechargeable battery



Battery residual power level display



Manual pressure release button



B70M-P24-KV
 insulated version
 with remote
 pneumatic
 hand controller