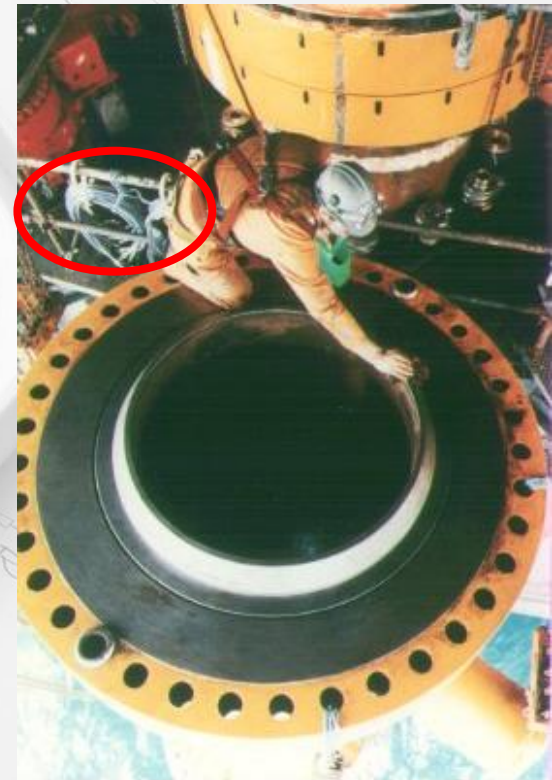


CableSafe® - Simplicity in Safety



Slips, trips & falls

- cause 25% of all workplace liability accidents*
- 95% of major slips & trips cause broken bones*
- causes dropped objects
- causes falls from heights



* Source: www.hse.gov.uk – HSENI Annual Report

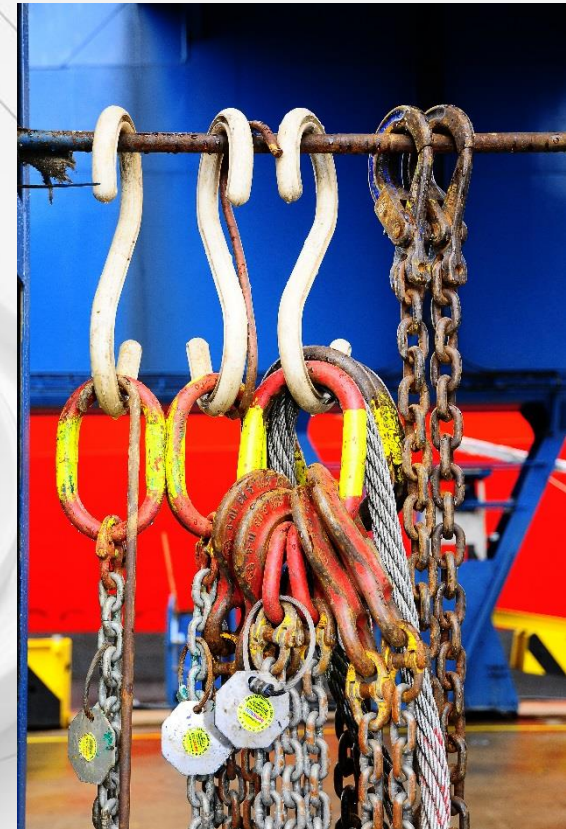
CableSafe Safetyhooks

1. Easy suspend cables, wires & hoses
2. Simple effective S-shape
3. Contributes to a safe work culture
4. Efficient cable management
 - replacing temporary cables
 - cable life extension by reduced wear
 - prevents environmental spills



Industrial Housekeeping

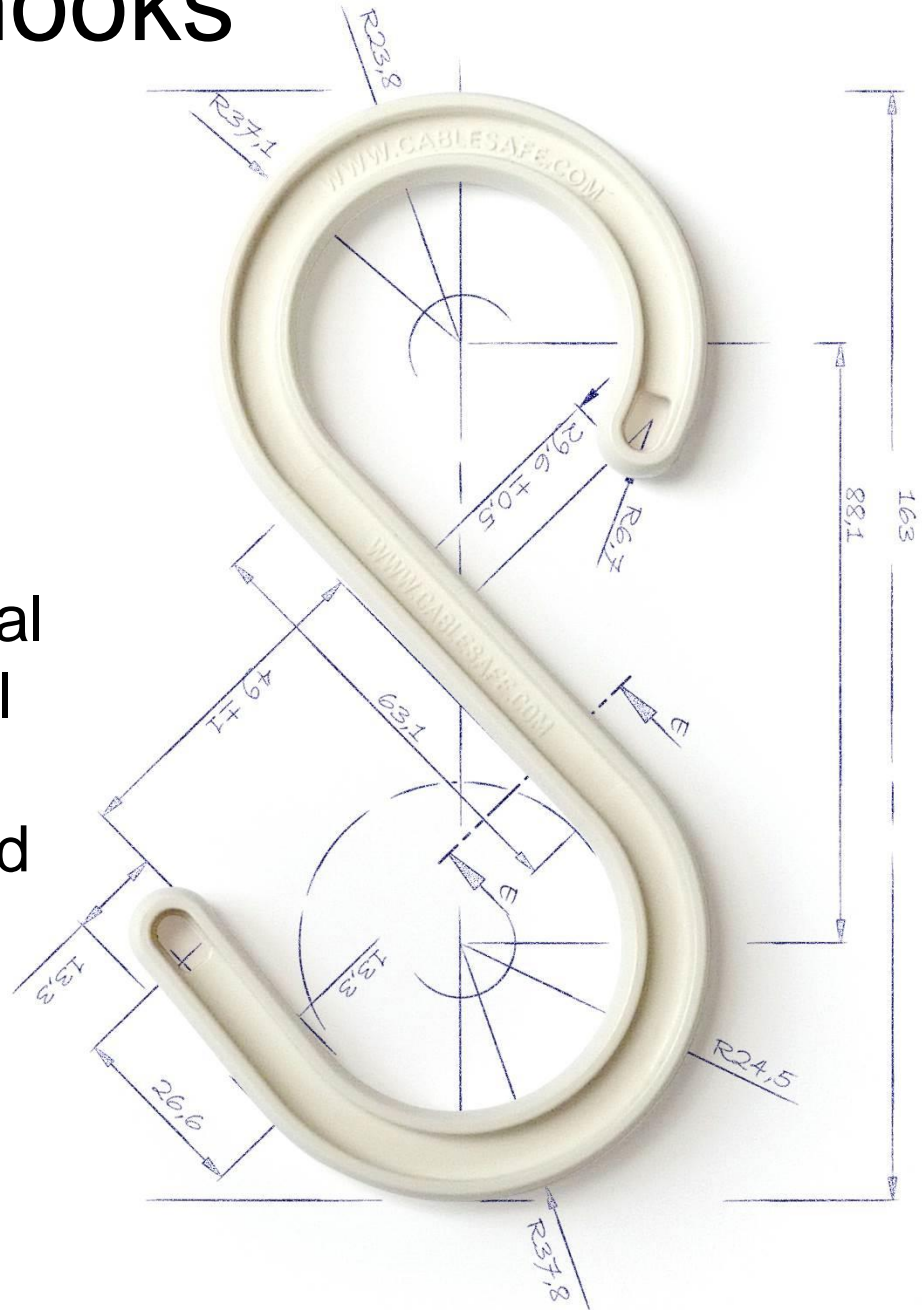
1. Policy for most multinationals
2. Cable management is an absolute requirement
3. Cable(Safe) management: *“Avoid slips & trips by suspension of cables, hoses and temporary equipment using S-hooks.” **



* Source: Total and DSM safety procedures

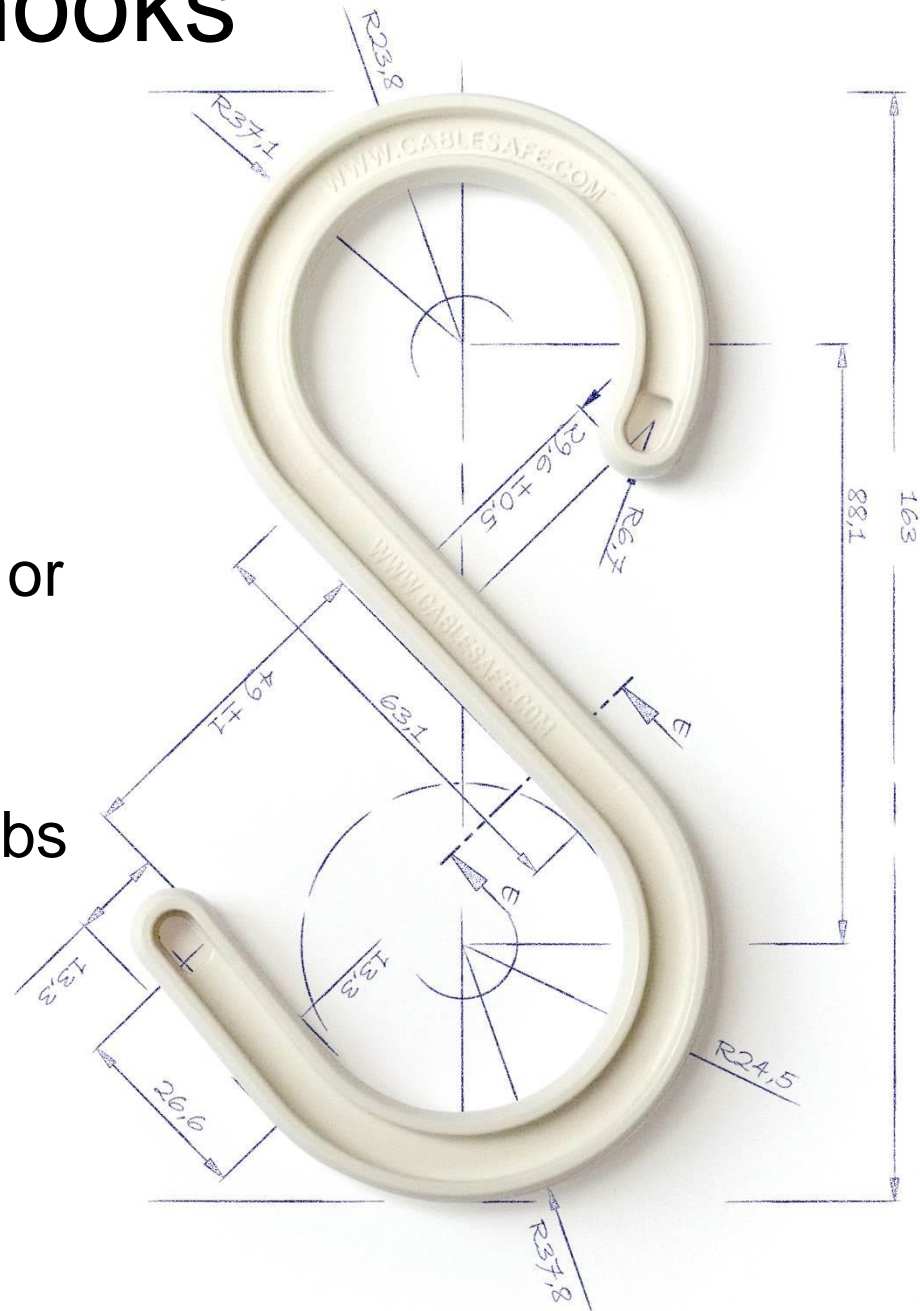
CableSafe Safetyhooks

- ✓ Application during maintenance, turnaround, construction and industrial works
- ✓ Industries: refineries, chemical plants, shipbuilding, electrical power stations, festivals, wind/solar energy, mining and nuclear installations



CableSafe Safetyhooks

- ✓ Non-conductive of electricity
- ✓ High UV resistance
- ✓ Heat resistant: -20 to 200°C, or -4 to -392°F
- ✓ Load: 40-300 kg, or 88–600 lbs
- ✓ Material: glass reinforced polyester



Cable(Safe) management [1/3]



Cable(Safe) management [2/3]



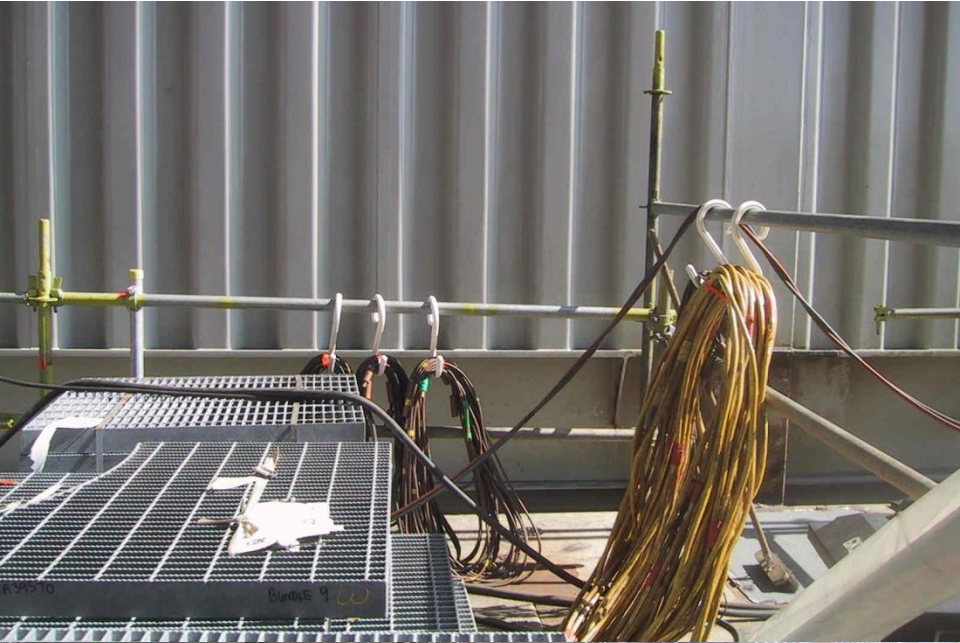
Cable(Safe) management [3/3]



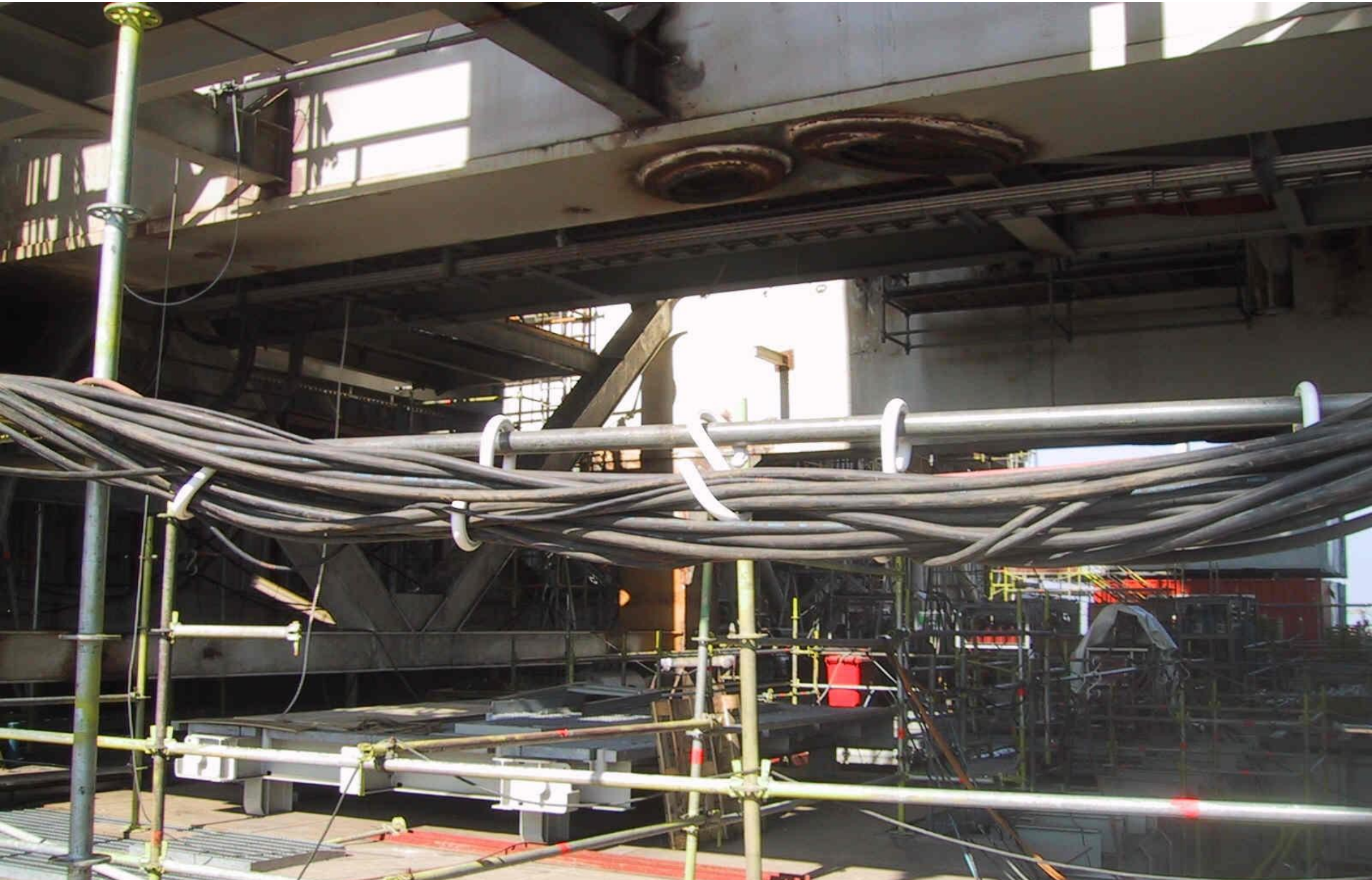
Suspension applications [1/2]



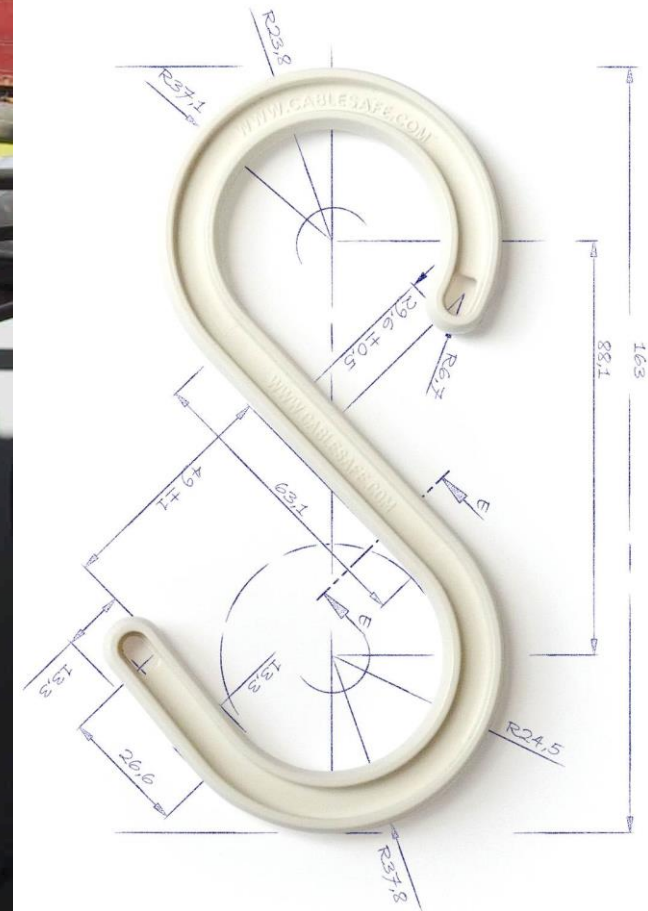
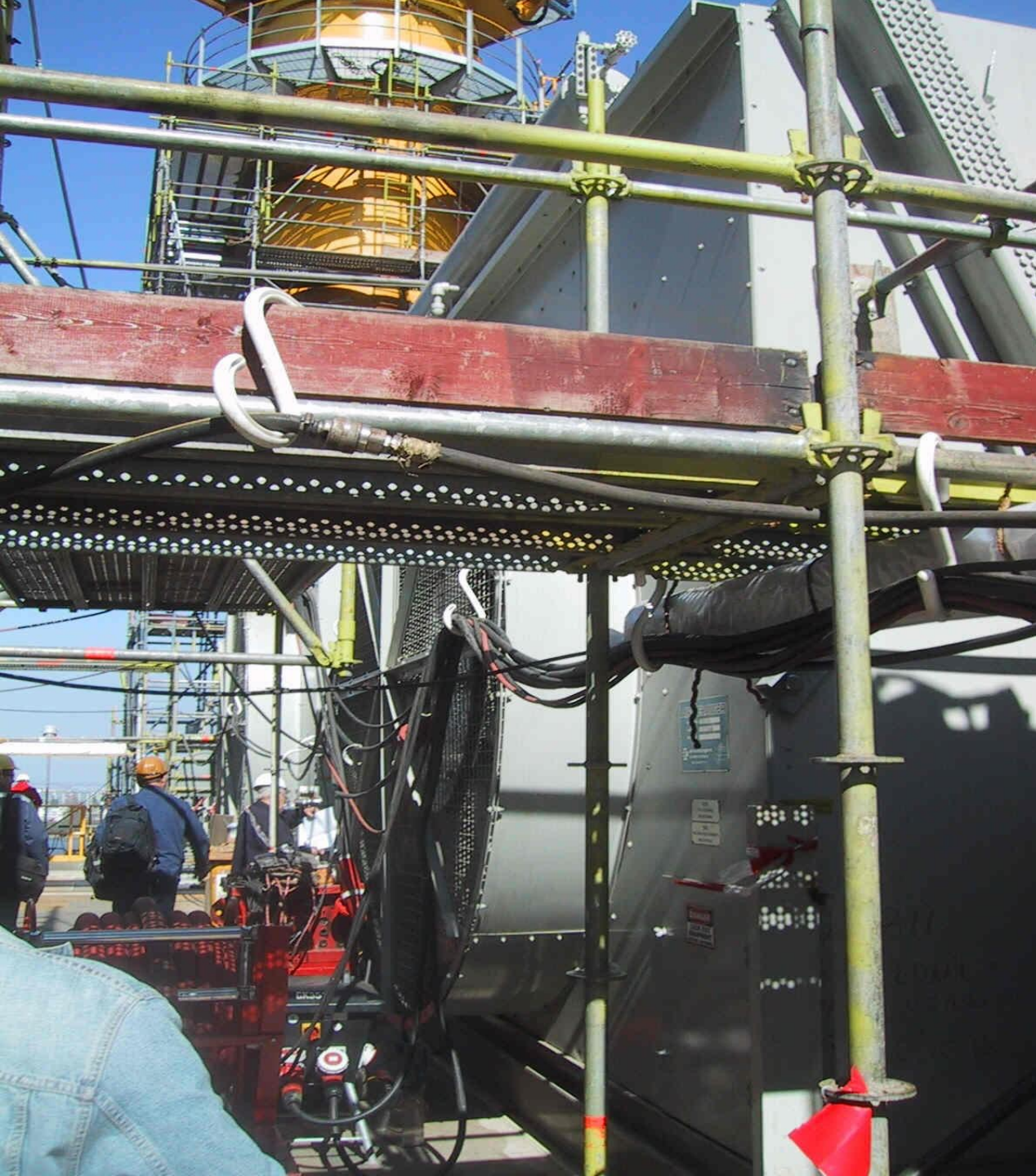
Suspension applications [2/2]



Heavy load capability



Eliminate: slips, trips
& blunt impacts!



CableSafe[®] specifications

Model	6"	9"	12"	15"
Cable opening size	47 mm	70 mm	95 mm	120 mm
Maximum load	40 kg (88 lbs)	55 kg (121 lbs)	190 kg (418 lbs)	300 kg (661 lbs)
Weight	55 grams (0.12 lbs)	105 grams (0.23 lbs)	350 grams (0.77 lbs)	650 grams (1.43 lbs)
Working temperature	from -20°C (-4°F) up to 200°C (392°F)			
Material	Glass reinforced polyester			
Standard available colors	White Yellow * company specific colors and company name on request			

Cablesafe® options

Standard available colors:

- White
- Yellow
- Glow-in-the-dark

Company Specific (on request):

- company colors
- company name



Glow-in-the-dark



'Glow-in-the-dark' hooks

Escape from your workspot in case of fire, power blackouts or other emergency situations in confined spaces



HAGEMEYER

ConocoPhillips

 **BASF**

The Chemical Company

References



bp



AkzoNobel



Shell



TOTAL

Q8



Boskalis

subsea 7 FLUOR

GRAINGER

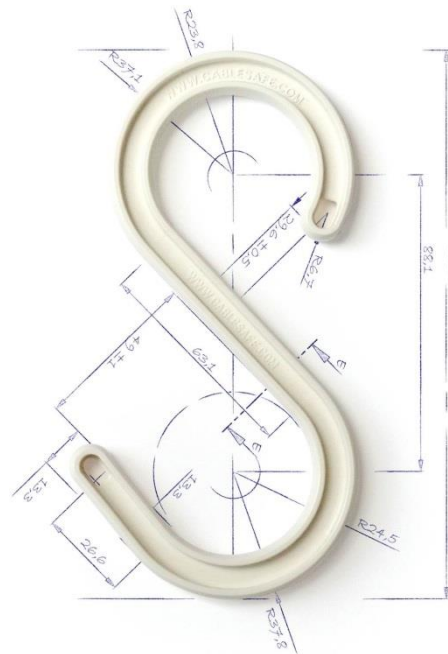
Huisman

ExxonMobil





Westmark BV
P.O. Box 32
3930 EB Woudenberg
The Netherlands



BP Oil UK Limited
Coryton Refinery
The Manorway
Stanford-Le-Hope
Essex SS17 9LL



Dear Lodewijk Westerbeek

For the "glow-in-the-dark" type was only used in a limited number of locations. This type was used inside two vessels that required cable runs inside. These hooks were located along the exit routes in case the internal lighting failed. The feedback was that on one occasion when the lights failed the hooks were a great help to personnel inside the vessel to evacuate until the lights were returned to service.

During the next turnaround, which is due 1st Qtr 2006 on our Fuels Complex, Cablesafe Hooks will be used not only for cable but also for hoses [Air/Water]. The main mechanical contractors will be advised if the availability of the cablesafe hooks and expect them to be adopting their use.

I hope this of help to your good selves. If you want to use Coryton as a reference site then please do so.

Regards,
Mark R. Saunders
Refinery Maintenance Planner



An abstract 3D digital artwork featuring two bright yellow, thick, curved shapes that resemble stylized 'C' or 'S' characters. These shapes are positioned on a smooth, white, reflective surface. A bundle of dark grey, glossy, ribbed tubes or ribbons enters from the left, loops around the base of the yellow shapes, and extends towards the right. The scene is lit from the upper left, creating soft shadows and highlights on the reflective surface and the curved forms. The background is a plain, light grey gradient.