



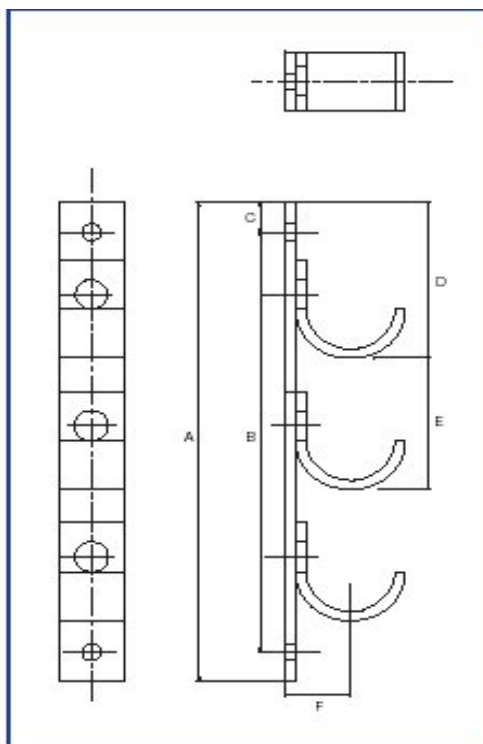
Technical Data Sheet

Cable Hangers

Drawing Reference: 3128 @ Revision 1

Steel Specification: S275 JR+AR grade Hot Rolled Structural Steel to BS EN 10025-2:20

Galvanising Specification: Hot dip spin galvanising to BS EN ISO1461:1999 after manufacture



| Part No. | Ways | Dimensions mm | | | | | | Material Size | | Fixing holes dia. | Pack Qty | Weight g |
|----------|------|---------------|-----|----|-----|-----|----|---------------|-----------|-------------------|----------|----------|
| | | A | B | C | D | E | F | Width | Thickness | | | |
| CH1W1 | 1 | 145 | 105 | 20 | 105 | - | 37 | 40 | 6 | 11 | 1 | 500 |
| CH2W1 | 2 | 235 | 195 | 20 | 105 | 90 | 37 | 40 | 6 | 11 | 1 | 900 |
| CH3W1 | 3 | 325 | 285 | 20 | 105 | 90 | 37 | 40 | 6 | 11 | 1 | 1300 |
| CH4W1 | 4 | 415 | 375 | 20 | 105 | 90 | 37 | 40 | 6 | 11 | 1 | 1700 |
| CH5W1 | 5 | 505 | 465 | 20 | 105 | 90 | 37 | 40 | 6 | 11 | 1 | 2100 |
| CH6W1 | 6 | 595 | 555 | 20 | 105 | 90 | 37 | 40 | 6 | 11 | 1 | 2500 |
| CH1W2 | 1 | 170 | 130 | 20 | 130 | - | 50 | 50 | 6 | 13 | 1 | 820 |
| CH2W2 | 2 | 295 | 255 | 20 | 130 | 125 | 50 | 50 | 6 | 13 | 1 | 1480 |
| CH3W2 | 3 | 420 | 380 | 20 | 130 | 125 | 50 | 50 | 6 | 13 | 1 | 2240 |
| CH4W2 | 4 | 545 | 505 | 20 | 130 | 125 | 50 | 50 | 6 | 13 | 1 | 2980 |
| CH5W2 | 5 | 670 | 630 | 20 | 130 | 125 | 50 | 50 | 6 | 13 | 1 | 3710 |
| CH6W2 | 6 | 795 | 755 | 20 | 130 | 125 | 50 | 50 | 6 | 13 | 1 | 4440 |
| CH1W3 | 1 | 185 | 145 | 20 | 145 | - | 62 | 50 | 6 | 13 | 1 | 980 |
| CH2W3 | 2 | 345 | 305 | 20 | 145 | 160 | 62 | 50 | 6 | 13 | 1 | 1900 |
| CH3W3 | 3 | 505 | 465 | 20 | 145 | 160 | 62 | 50 | 6 | 13 | 1 | 2820 |
| CH4W3 | 4 | 665 | 625 | 20 | 145 | 160 | 62 | 50 | 6 | 15 | 1 | 3600 |
| CH5W3 | 5 | 825 | 785 | 20 | 145 | 160 | 62 | 50 | 6 | 15 | 1 | 4560 |
| CH6W3 | 6 | 985 | 945 | 20 | 145 | 160 | 62 | 50 | 6 | 15 | 1 | 5600 |

Size 1 for cables up to 50mm Diameter

Size 2 for cables 51 - 75mm Diameter

Size 3 for cables 76 - 100mm Diameter

CABLE JOINTS, CABLE TERMINATIONS, CABLE GLANDS, CABLE CLEATS
FEEDER PILLARS, FUSE LINKS, ARC FLASH, CABLE ROLLERS, CUT-OUTS

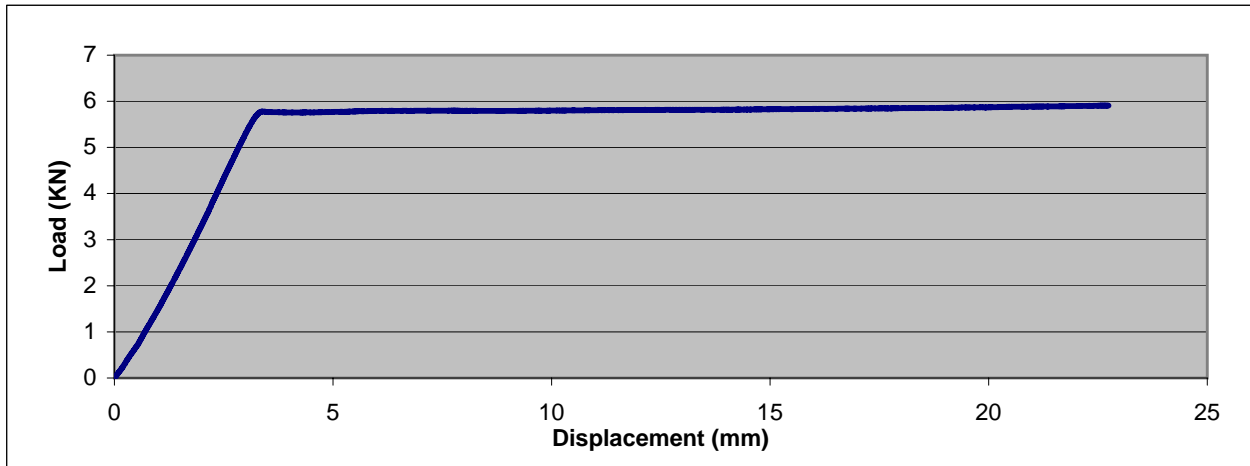


Load Capacity:

The recommended safe working load for individual hooks is detailed below. Brackets with multiple hook configurations are designed to operate with all hooks carrying their maximum load.

Recommended safe working loads for Size 1 Cable Hangers

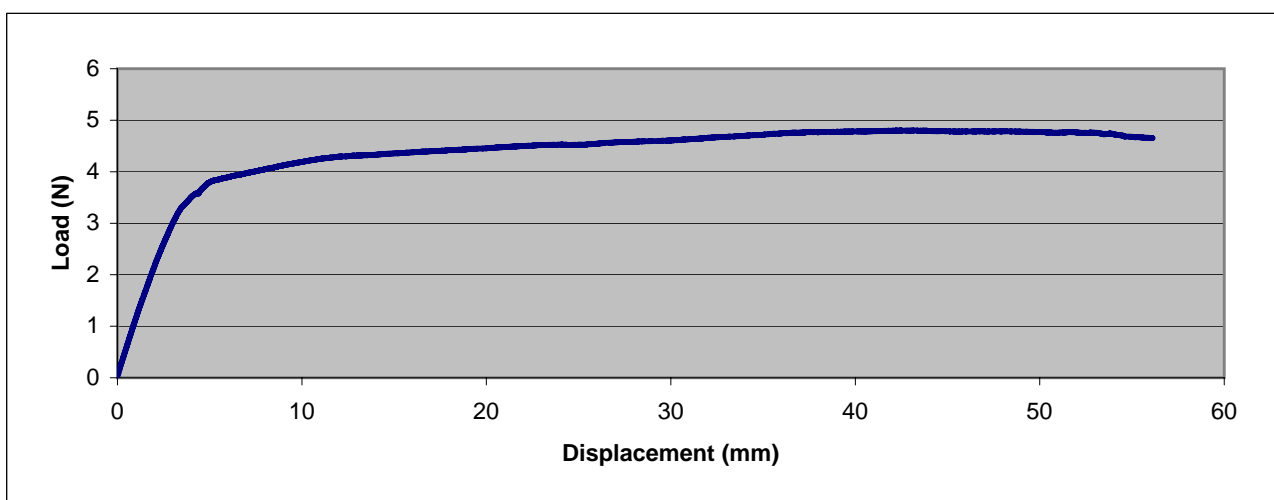
| | | | Newtons | Kg |
|--------------|--------------------|-------------------------|---------|-----|
| CH1W1 | Cable Hanger 1-Way | Cables to 50mm Diameter | 2000 | 200 |
| CH2W1 | Cable Hanger 2-Way | Cables to 50mm Diameter | 2000 | 200 |
| CH3W1 | Cable Hanger 3-Way | Cables to 50mm Diameter | 2000 | 200 |
| CH4W1 | Cable Hanger 4-Way | Cables to 50mm Diameter | 2000 | 200 |
| CH5W1 | Cable Hanger 5-Way | Cables to 50mm Diameter | 2000 | 200 |
| CH6W1 | Cable Hanger 6-Way | Cables to 50mm Diameter | 2000 | 200 |

Typical Tensile Test Data for Size 1 Cable Hangers

Typical yield at 5.7kN

Recommended Safe Working Loads for Size 2 Cable Hangers

| | | | Newtons | Kg |
|--------------|--------------------|----------------------------|---------|-----|
| CH1W2 | Cable Hanger 1-Way | Cables 51 to 75mm Diameter | 2500 | 250 |
| CH2W2 | Cable Hanger 2-Way | Cables 51 to 75mm Diameter | 2500 | 250 |
| CH3W2 | Cable Hanger 3-Way | Cables 51 to 75mm Diameter | 2500 | 250 |
| CH4W2 | Cable Hanger 4-Way | Cables 51 to 75mm Diameter | 2500 | 250 |
| CH5W2 | Cable Hanger 5-Way | Cables 51 to 75mm Diameter | 2500 | 250 |
| CH6W2 | Cable Hanger 6-Way | Cables 51 to 75mm Diameter | 2500 | 250 |

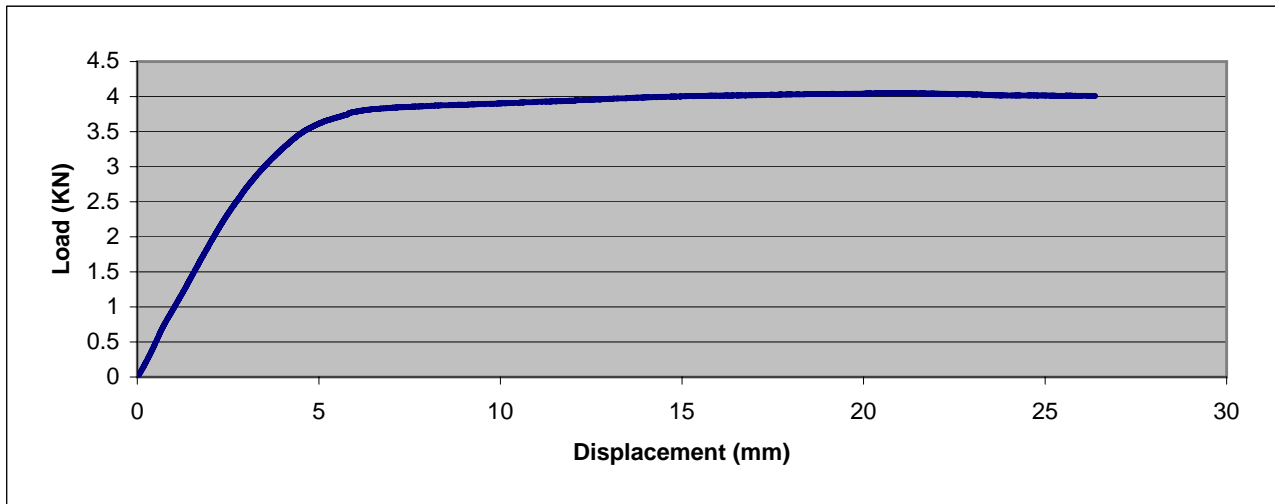
Typical Tensile Test Data for Size 2 Cable Hangers

Typical yield at 4.8kN

Recommended Safe Working Loads for Size 3 Cable Hangers

| | | | Newtons | Kg |
|--------------|--------------------|-----------------------------|---------|-----|
| CH1W3 | Cable Hanger 1-Way | Cables 76 to 100mm Diameter | 2500 | 250 |
| CH2W3 | Cable Hanger 2-Way | Cables 76 to 100mm Diameter | 2500 | 250 |
| CH3W3 | Cable Hanger 3-Way | Cables 76 to 100mm Diameter | 2500 | 250 |
| CH4W3 | Cable Hanger 4-Way | Cables 76 to 100mm Diameter | 2500 | 250 |
| CH5W3 | Cable Hanger 5-Way | Cables 76 to 100mm Diameter | 2500 | 250 |
| CH6W3 | Cable Hanger 6-Way | Cables 76 to 100mm Diameter | 2500 | 250 |

Typical Tensile Test Data for Size 3 Cable Hangers



Typical yield at 3.7kN



CABLE JOINTS, CABLE TERMINATIONS, CABLE GLANDS, CABLE CLEATS
FEEDER PILLARS, FUSE LINKS, ARC FLASH, CABLE ROLLERS, CUT-OUTS

11KV 33KV CABLE JOINTS & CABLE TERMINATIONS

FURSE EARTHING

www.cablejoints.co.uk

Thorne and Derrick UK

Tel 0044 191 490 1547 Fax 0044 191 477 5371

Tel 0044 117 977 4647 Fax 0044 117 9775582