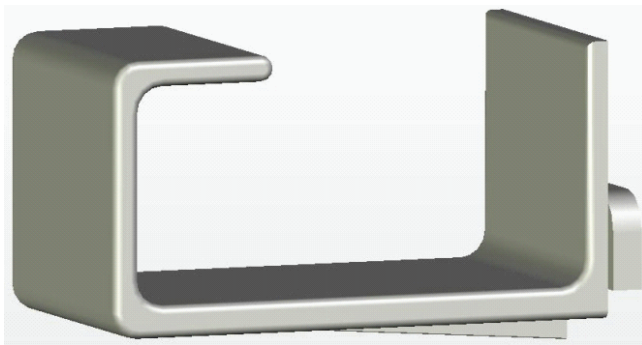


GRP format Signal Cable Hanger for Universal Fixing Bracket (UFB) Types 400 - 700 Multi-way Series for Tunnel Ring Mounting Versions

The attachment fixing panel of the Universal Fixing Bracket (UFB) product range is designed to enable various accessories and items to be simply & robustly secured by our 'Twist & Lock' fixing mechanism (*no bolt or screw fitting required*). **Multiple units of the same attachments & accessories, or alternatively a mixed choice of items may be secured as required**



The GRP format Signal Cable Hanger

is specifically designed to exceed the safety critical requirements of London Underground Ltd and to provide a secure, reliable cable fixing method in the most demanding, hostile and hazardous environments.

Benefits:

- ◆ London Underground 'Fire Safety Performance of Materials' compliant with specification No. 1-085 (2-01001-002)
- ◆ High strength - Glass reinforced
- ◆ Non-metallic - No bimetallic corrosion
- ◆ No deburring, earthing or painting required
- ◆ No concerns with EMC or magnetic fields
- ◆ Excellent electrical and thermal insulator with high dielectric strength and arc quenching
- ◆ Maintenance free
- ◆ Lightweight, rigid & durable
- ◆ Easy to use
- ◆ Safe handling & safe 'in-use'
- ◆ Zero maintenance
- ◆ Serviceable to 330°C
- ◆ UV Resistant
- ◆ No 'burrs' to snag or damage cables
- ◆ 50 Year Effective Life
- ◆ Weather resistant
- ◆ 100% recyclable

Material:

- ◆ High Strength & Durable Glass Reinforced smooth surface thermoplastic resin
- ◆ Flame retardant - Flammability to UL94 V-0 rating at 0.8mm - Self extinguishing
- ◆ Low Smoke, Halogen & Phosphorous free
- ◆ Non-Toxic & Non-Hazardous
- ◆ Choice of raw material compounds for specific and extreme applications
- ◆ Corrosion free stable - not subject to attack by weather, chemical or biological agents
- ◆ Dimensionally stable material with no directional 'grain' weakness

Product:

- ◆ Easily manageable lightweight product
- ◆ Manufactured to tight tolerances
- ◆ Suitable for usage & storage in exposed, potentially hazardous & hostile environments
- ◆ Standard product colouring in Grey / Black - other colours available to special order

Continued on Page 2 ►