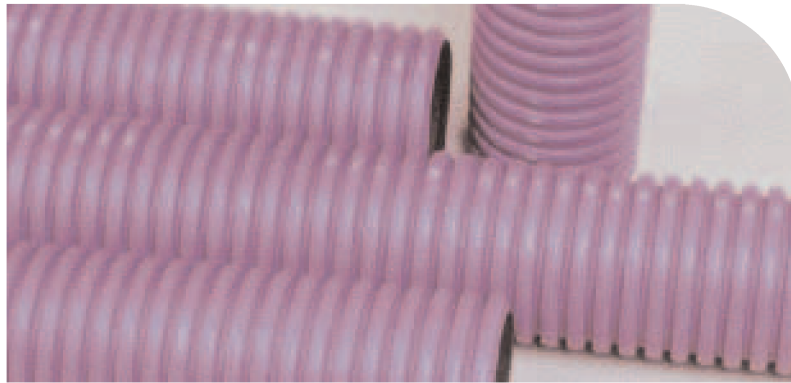


**RIDGIDUCT COMMS →**

Polypipe Civils is able to offer Ridgiduct Comms 94, 100 and 150mm as a sealed system specifically designed for motorway communications applications. Ridgiduct is fully integrated with Polypipe access boxes. (Refer to Lighting section).

Ridgiduct Comms features include:

- Type 450, normal duty
- IP47 rated sealed system
- BBA certified as a fully sealed system
- Certified to BS EN 50086-2-4 and meets the requirements of MCHW 1530
- Print options available
- Available in 6 and 12m lengths to minimise the number of joints

**Ridgiduct Comms**

Description	I.D. mm	Length (m)	Product Code
Purple motorway duct	94	6	RB94X6PMCPPE
	100	6	RB100X6PMCPPE
	150	6	RB150X6PMCPPE
	94	12	RB94X12PMCPPE
	100	12	RB100X12PMCPPE

Conforms to Highways Agency Specification for sealed systems.
Printed Motorway Comms/Power
Also available in black. Please contact us for further information.
Print options available. Please state requirements when ordering.

**POLYDUCT COMMS →**

Polyduct is manufactured in MDPE or HDPE and is available in coils. It can be used for either open trench or trenchless applications.

Polyduct Comms

O.D. mm	I.D. mm	Length	Product Code
60	50	50m coil	PD5060X50P
107	97	50m coil	PD97107X50P

The above ducting is made to order and is subject to minimum order quantities and lead times.
Also available in other lengths.

**Features include:**

- IP47 rated sealed system
- Two part plug allows for rapid fitting, both new and retrofit
- Integral air test valve
- Design resists ejection from the duct
- All 4 ports can be utilised by the use of an additional draw cord bracket

COMLITE TRANSIT SYSTEMS →

Comlite duct plugs, when used in conjunction with the insertable cable grommets, ensures full compliance with the requirements of Series 1530 of the Highways Agency Specification for Highway Works and is the only transit system accredited by the BBA for motorway comms. When used with Ridgiduct it completes a certified sealed system.

Comlite

Product Code	Description
DP94	94mm plug
DP100	100mm plug
DPG0	Blanking grommet with rope attachment point
DPG9	9mm grommet
DPG12	12mm grommet
DPG14	14mm grommet
DPG16	16mm grommet
DPG18	18mm grommet
DPG21	21mm grommet
DPG24	24mm grommet
DPG27	27mm grommet
DPG9x4	4x9mm grommet
DPG9x7	7x9mm grommet
DPRAB	L-bracket for rope attachment

Patent pending



**RIDGICOIL COMMS →**

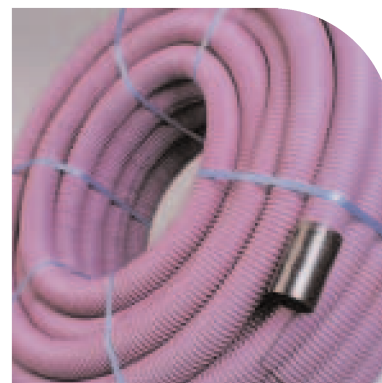
Ridgicoil is a coiled twin wall duct, its flexibility eliminates the need for special bends and the smooth bore has a low co-efficient of friction for ease of cable installation.

Ridgicoil Comms

Code	O.D. mm	I.D. mm	Length
RC63X50PMCP	63	50	50m
RC110X50PMCP	110	94	50m

Ridgicoil Comms features:

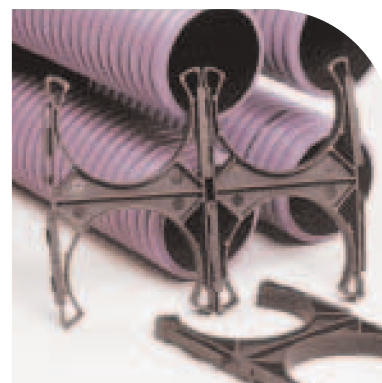
- Compliance with EN 50086-2-4:
Type 450N, normal duty impact resistance
- Manufactured in polyethylene with
excellence impact resistance at low
temperatures
- Long coil lengths for reduced jointing
- Factory installed draw cord and
coupling
- Optional sealing rings for sealed system
- Low weight, high strength

**DUCT SPACERS →**

High quality injection moulded spacers are available to secure multiple installations of all 94 and 100mm diameter ducts. The unique modular designs enables multiple configurations to be assembled. Duct spacers comply with the requirements of MCHW 1530.

Duct Spacers

Description	Duct ID	Product Code
2 way Duct Spacer (to suit 110mm O.D.)	94	RBS110x2
4 way Duct Spacer (to suit 110mm O.D.)	94	RBS110x4
6 way Duct Spacer (to suit 110mm O.D.)	94	RBS110x6
2 way Duct Spacer (to suit 118mm O.D.)	100	RBS118x2
4 way Duct Spacer (to suit 118mm O.D.)	100	RBS118x4
6 way Duct Spacer (to suit 118mm O.D.)	100	RBS118x6

**DRAW CORD →**

Manufactured from high quality polypropylene to a nominal breaking strength of 5kN.

Draw Cords

Description	Product Code	Pallet Qty
6mm Dia. x 220m	DC220	160
6mm Dia. x 500m (wooden drum)	DC500	72

**SPECIAL NOTE FOR APPLICATIONS SUBJECT TO HIGHWAYS AGENCY REQUIREMENTS →**

It should be noted that a number of versions of the Manual of Contract Documents for Highway Works are in use and individual contracts can be subject to substantial variation. Suitability should always be checked with the overseeing organisation. Products selected should be BBA approved or meet the requirements of Table 5/2 unless exceptional requirements demand an alternative. It should also be noted that there are differences between requirements for ducts in Series 500 and 1500 of the Specification for Highway Works.