

## INSTALLATION INSTRUCTIONS



**12.** When working with the NOFIRNO sealant we recommend the use of disposable nitrile gloves. Using the water spray, dampen the cellulose sponge. This is done to stop the sealant from sticking to the sponge whilst working with it.



**15.** The surface of the NOFIRNO sealant should then be finished off by hand. Ensure a good smooth finish is obtained by the use of a fast skimming motion. Make sure there is a good seal around all of the cables, paying particular attention between the cables.



**13.** Using a dabbing motion, firmly pat down the NOFIRNO sealant, ensuring the sealant makes good contact with both cable and the duct wall. For installations in vertical ducts the sealant should stand just proud of the duct; allowing any water to run off the surface without pooling.



**16.** Take a final check with a torch to ensure sufficient sealant has been applied and the duct is properly sealed. If there are any areas that do not seem sufficiently sealed add more NOFIRNO sealant in this area and smooth off as before. Clean any excess sealant from the edge of the duct and cables.



**14.** Use the water spray to wet your gloves, this will ensure the sealant does not stick to the gloves.



**17.** The completed RISE RAPID Duct Seal will provide a 4 bar (58 psi) water tight and 1.0 bar (15 psi) gas tight rated seal. The RISE RAPID system is proven to provide maintenance free protection for a period in excess of 50 years.

### TOOLS REQUIRED:

(In addition to the RISE RAPID Finishing Kit)

- High ratio sealant gun
- Long nosed pliers
- Approved degreaser
- Cartridge Cutter
- Torch

### RISE RAPID FINISHING KITS AVAILABLE

Kit includes; disposable nitrile gloves, cellulose sponge, wooden gauge, water spray, long nozzles and angles.

### RISE RAPID Duct Seal Kits

#### Duct Size

RISEDUCT-R	1 Kit = 100mm Duct 2 Kits = 150mm Duct
RISEDUCT100-R	100mm
RISEDUCT125-R	125mm
RISEDUCT150-R	150mm
RISEDUCT160-R	160mm
RISEDUCT200-R	200mm
RISEDUCT225-R	225mm
RISEDUCT250-R	250mm
RISEDUCT300-R	300mm

Installation instruction video also available on our website  
[www.csdsealingsystems.co.uk](http://www.csdsealingsystems.co.uk)

## INSTALLATION INSTRUCTIONS

INSTALLATION  
VIDEO AVAILABLE  
ON OUR WEBSITE

# RISE<sup>®</sup> RAPID Duct Seal

## Multi Cable and Pipe Transit Sealing System

### CSD Sealing Systems

Unit 6, Easter Park,  
Nelson Park West,  
Cramlington NE23 1WQ

Tel: 01670 739970

Fax: 01670 716548

Information: [info@csdsealingsystems.co.uk](mailto:info@csdsealingsystems.co.uk)

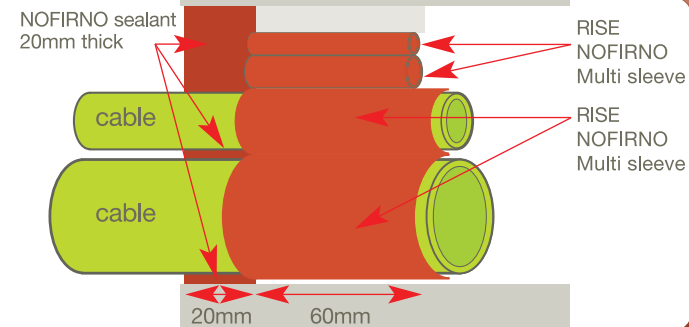
[www.csdsealingsystems.co.uk](http://www.csdsealingsystems.co.uk)

**CSD**  
SEALING SYSTEMS

**SAFETY.  
RELIABILITY.  
INGENUITY.**

## INSTALLATION INSTRUCTIONS

The RISE RAPID Multi Cable and Pipe Transit Sealing System provides an effective and simple solution to all gas and water tight duct sealing requirements. It consists of only two components: **NOFIRNO sealant**; a silicone based fire resistant, water repellent sealant and **NOFIRNO multi sleeves**, supplied in bonded strips to make the system easy to install.



20mm layer of NOFIRNO sealant  
60mm RISE NOFIRNO Multi sleeve  
Water tight pressure resistance - 4 bar

• WIMES, DSEAR,  
ATEX & APEA  
Compliant



1. Ensure the duct opening is clear, removing any debris which may interfere with the installation of the RISE RAPID Duct Seal & cutting of any cable ties to enable thorough cleaning of the cables and the duct. The duct should also be dry.



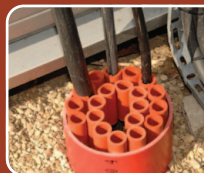
2. Using an approved degreasing cleaner, thoroughly clean the inside 20mm edge of the transit. All dirt, dust, rust or oil residues must be removed to ensure a good bond of the NOFIRNO sealant to the ducting.



3. To ensure cable separation for installations with smaller cables, use the sleeve cutting tool to slit a quantity of the NOFIRNO sleeves. This should be about equal to the quantity of cables in the duct.



4. Place a split sleeve around each of the cables in the duct and then push the multi sleeves into the duct. For larger or single cables, this is not necessary. Simply ensure the multi sleeves provide separation between cables and between the duct and cables.



5. Fill the remaining free space with spare NOFIRNO multi sleeves.



6. Any small gaps should be filled with smaller sized 18/12 NOFIRNO multi sleeves. Multi sleeves can be easily separated in to smaller quantities. It is important to ensure multi sleeves are tightly packed into the duct to create a solid base for the application of the sealant.



7. Push all of the multi sleeves into the duct.



8. Push sleeves into duct to depth of 20mm, allowing for the application of the NOFIRNO sealant layer.



9. Adjustments can be made to the multi sleeves using a pair of long nosed pliers. Allowing the correct 20mm depth will ensure a suitable layer of sealant is applied and a good seal is maintained.



10. Attach the nozzle to the NOFIRNO sealant cartridge and snip the nozzle at an angle, this will help installation. For awkward applications longer nozzles and angled applicators are available. To ensure a good bond is made, before adding the NOFIRNO sealant, clean the duct and cables again using the approved degreaser.



11. Using a specialist high ratio caulking gun, apply the NOFIRNO sealant to the least accessible areas first (usually around cables). Apply sealant over sleeves, allowing to fill out to the required 20mm depth; a slight overfill is needed. Use a torch to check for gaps in sealant & apply more sealant if required.