

Adding a cable.



Step 1

Adding new cables is a simple process. Cut away the sealant layer using a plastic knife or hollow punch. Take care not to damage existing cables. A hole slightly larger than the new cable should be made.



Step 2

Pull the new cable through one of the empty filler sleeves. Use an approved degreaser to ensure the cable sheath is clean and free from dirt, dust or oil to ensure the sealant will bond to the cable.



Step 3

Refill the opening cut in the sealant layer with sufficient sealant. A slight overfill is required.



Step 4

Finish the sealant layer in the usual way. Using a damp cloth pat down the NOFIRNO sealant, ensure the sealant makes good contact with the cable and the existing sealant layer. Finally, smooth the surface by hand.

Standard RISE RAPID Duct Seal kits – order table.

REQUIREMENT	SIZE	ORDER CODE
GASTIGHT/WATERTIGHT	1 KIT = 100MM DUCT 2 KITS = 150MM DUCT	RISEDUCT-R
GASTIGHT/WATERTIGHT	125MM DUCT	RISEDUCT125-R
GASTIGHT/WATERTIGHT	150MM DUCT	RISEDUCT150-R
GASTIGHT/WATERTIGHT	160MM DUCT	RISEDUCT160-R
GASTIGHT/WATERTIGHT	200MM DUCT	RISEDUCT200-R
GASTIGHT/WATERTIGHT	225MM DUCT	RISEDUCT225-R
GASTIGHT/WATERTIGHT	250MM DUCT	RISEDUCT250-R
GASTIGHT/WATERTIGHT	300MM DUCT	RISEDUCT300-R

NOTE: RISE can be used to suit **ANY** size opening. If the above standard selection does not suit your requirements please contact us.



TOOLS REQUIRED

- High ratio sealant gun
- Disposable nitrile gloves
- Approved Cloths
- Long nose pliers
- Water spray
- Wooden 20mm depth gauge
- Wire brush
- Approved Degreaser
- Sleeve cutting tool

RISE FINISHING KITS AVAILABLE

RISE Finishing Kit
(includes water spray, cloths, nitrile gloves, wooden gauge, long nozzels & angles)

RISE Full Installation Kit (includes all tools)



WWW.CABLEJOINTS.CO.UK
THORNE & DERRICK UK
TEL 0044 191 490 1547 FAX 0044 477 5371
TEL 0044 117 977 4647 FAX 0044 977 5582
WWW.THORNEANDDERRICK.CO.UK

RISE RAPID Duct Seal

Multi Cable and Pipe Transit Sealing System



Simple and effective

The RISE RAPID Duct seal has been developed with speed of installation in mind, but without compromising on the high levels of reliability and safety synonymous with our range of RISE Duct sealing systems.

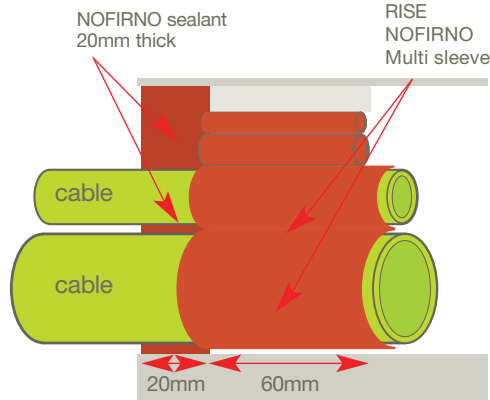
The innovative multi sleeves are supplied bonded in strips of ten, making installation even quicker than with our traditional RISE Duct Seals. Bonded sleeves can be easily torn off if neccessary and with our cutting tool, sleeves can be quickly slit to fit around cables.

Gas and water tight

The elasticity and high bonding strength of NOFIRNO sealant offers a flexible seal, which resists movement, shock and vibration, as well as high pressure. The RISE NOFIRNO multi sleeves ensure cable separation and are used to pack the free space and provide a backing for the application of the sealant. The completed duct seal will prevent the migration of dangerous gases and provide flood protection and has been independently tested to prove no deterioration in performance for more than 50 years.

20mm layer of NOFIRNO sealant. 60mm RISE NOFIRNO Multi sleeves

- Certified Pressure Resistance – 4 bar



WWW.CABLEJOINTS.CO.UK
THORNE & DERRICK UK
TEL 0044 191 490 1547 FAX 0044 477 5371
TEL 0044 117 977 4647 FAX 0044 977 5582
WWW.THORNEANDDERRICK.CO.UK

Installation instructions

The RISE RAPID Multi Cable and Pipe Transit Sealing System provides an effective and simple solution to all gas and water tight duct sealing requirements. It consists of only two components: NOFIRNO sealant, a silicone based fire resistant, water repellent sealant and rubber multi sleeves. These joined sleeves make the system even quicker and easier to install than the standard RISE Duct Seal.



Step 1

Ensure the duct opening is clear, removing any debris which may interfere with the installation of the RISE Duct Seal. The duct should also be dry.



Step 2

Using an approved degreasing cleaner, thoroughly clean the inside 20mm edge of the transit. All dirt, dust, rust or oil residues must be removed to ensure a good bond of the NOFIRNO sealant to the ducting.



Step 3

Using the sleeve cutting tool, slit a quantity of the Nofirno sleeves, about equal to the quantity of cables in the duct.



Step 4

Place a split sleeve around each of the cables in the duct and then push the multi sleeves into the duct. For larger or single cables, this is not necessary. Simply ensure the multi sleeves provide separation between cables and between the duct and cables.



Step 5

Fill the remaining free space with spare NOFIRNO multi sleeves.



Step 6

Smaller gaps should be filled with smaller sized 18/12 NORFIRNO filler sleeves. Filler sleeves can be easily separated in to smaller quantities. It is important to ensure filler sleeves are tightly packed into the transit to create a solid base for the application of the sealant.



Step 7

Push all of the filler sleeves into the duct.



Step 8

Leave 20mm free space at the front of the duct for the application of the NOFIRNO sealant layer.



Step 9

Adjustments can be made to the filler sleeves using a pair of long nosed pliers. Allowing the correct 20mm depth will ensure a suitable layer of sealant is applied and a good seal is maintained.



Step 10

Attach the nozzle to the NOFIRNO sealant Cartridge and snip the nozzle at an angle, this will help installation. For awkward applications longer nozzles and angled applicators are available.



Step 11

Using a specialist high ratio caulking gun, apply the NOFIRNO sealant to the most awkward places, (around cables). Apply sealant against sleeves, allowing to fill out to the required 20mm depth; a slight overfill is needed.



Step 12

Using the water spray dampen a cloth, this is done to stop the sealant from sticking to the cloth whilst working with it. When working with the NOFIRNO sealant we recommend the use of disposable nitrile gloves.



Step 13

Using a dabbing motion, pat down the NOFIRNO sealant, ensuring the sealant makes good contact with both cable and the duct wall. The sealant should stand just proud of the duct; allowing any water to run off the surface without pooling.



Step 14

Use the water spray to wet your gloves, this will ensure the sealant does not stick to the gloves.



Step 15

The surface of the NOFIRNO sealant should then be finished off by hand. Ensuring a good smooth finish is obtained.



Step 16

Take a final check with a torch to ensure sufficient sealant has been applied and the transit is properly sealed. If there are any areas that do not seem sufficiently sealed add more NOFIRNO sealant in this area and smooth off in the usual way.



Step 17

The completed RISE RAPID Duct Seal will provide a 4 bar (58 psi) water tight and 1.0 bar (15 psi) gas tight rated seal. The RISE NOFIRNO system is proven to provide maintenance free protection for a period in excess of 50 years.

See overleaf for 'Adding or replacing a cable'