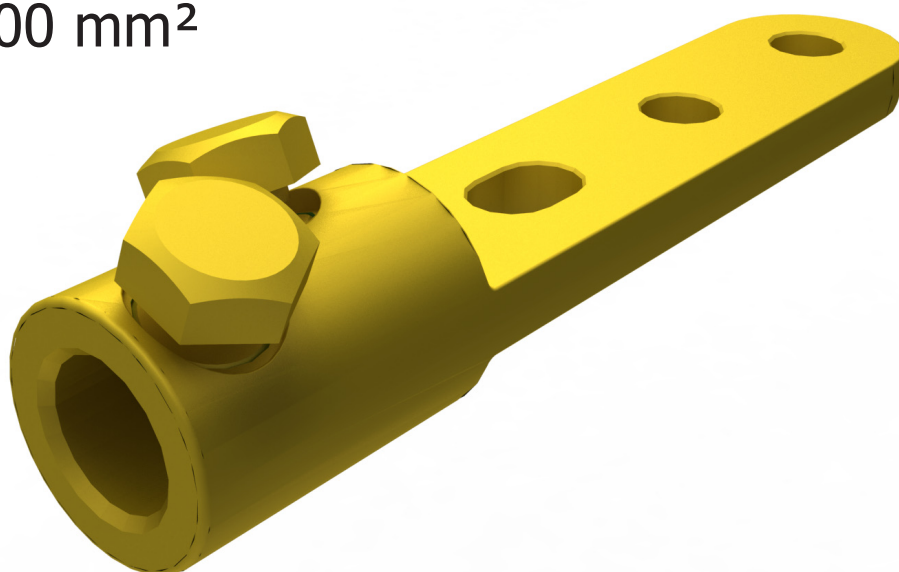


## BMHTO300AS3

Indoor/Outdoor Lug  
300 mm<sup>2</sup>



### BIcon™

#### Application

Power cables with aluminium conductors.  
Can be used with cold shrink and heat shrink terminations. For 12mm stud fixings.

#### Features

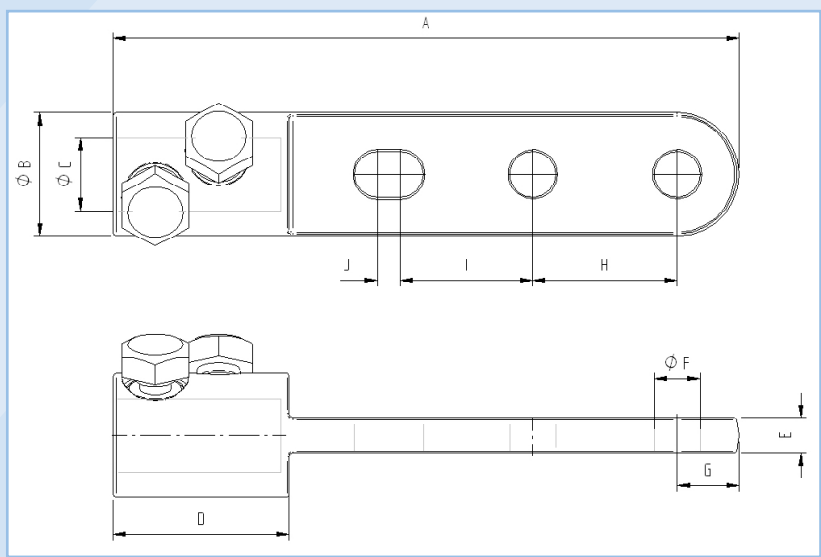
Profiled bore to enhance electrical contact and increase mechanical restraint.  
Full compliance with the **electrical** and **mechanical** requirements of IEC 61238.



WWW.CABLEJOINTS.CO.UK  
**THORNE & DERRICK UK**  
TEL 0044 191 490 1547 FAX 0044 477 5371  
TEL 0044 117 977 4647 FAX 0044 977 5582  
WWW.THORNEANDDERRICK.CO.UK



BMHTO300AS3 Indoor/Outdoor Lug 300 mm²



Dimension Details

A	178 mm
B	35 mm
C	20.5 mm
D	50 mm
E	10 mm
F	13 mm
G	17.5 mm
H	41 mm
I	37.5 mm
J	6.5 mm

Technical Data

Connector Type	Lug (Centre Palm)
Material Reference Number	8702701
Catalogue Number	BMHTO300AS3
Connector Material	Brass
Number of Conductor Bolts	2
AF	17 mm
Shear torque	34 Nm
Bolt Material	Brass
Palm Configuration	2 Holes + Single Slot
Hole size to suit stud diameter	12 mm
Additional sleeve to suit stud diameter	N/A mm
Slot	Yes
Slot Width	13 mm
Slot Length	19.5 mm
Conductor Cross Section Range	
Solid Aluminium	300 mm²
Stranded Aluminium	N/A mm²
Stranded Copper	N/A mm²
Stranded Flexible Copper	N/A mm²
Overall Length	178 mm
Diameter	35 mm
Weight (Each)	645g
Shipping Quantity (min)	10 pieces
Test Standard	IEC 61238

\*Technical Information subject to change without notice.

Accessories

BMHOLDER	Connector brace for use on installation
59020	Mastic filler kit (Pack of 6 Strips)