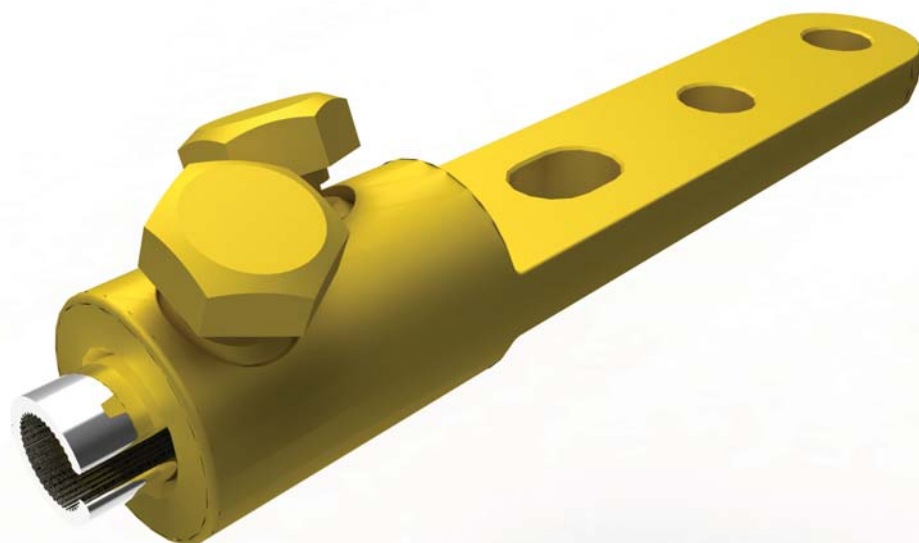


BMHT0185AS3

Indoor/Outdoor Lug
95 -185 mm²



BI con™

Application

Power cables with copper and aluminium conductors.
Can be used with cold shrink and heat shrink terminations. For 12mm stud fixings.

Features

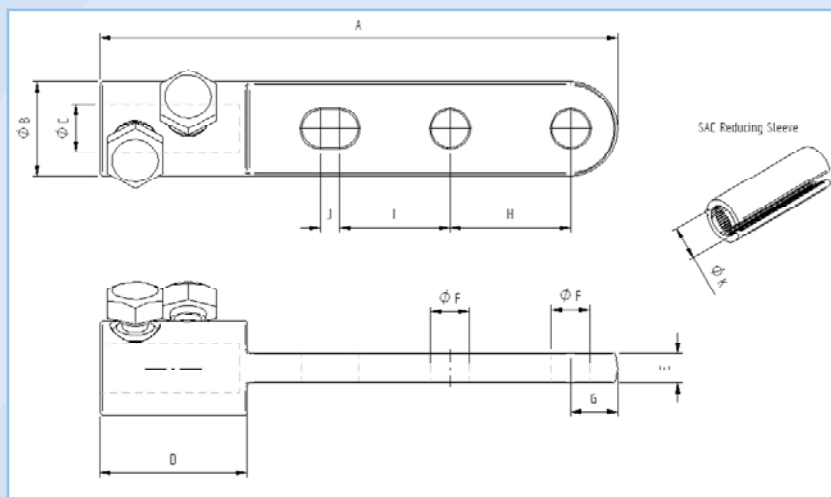
Profiled bore to enhance electrical contact and increase mechanical restraint.
Full compliance with the **electrical** and **mechanical** requirements of IEC 61238.



WWW.CABLEJOINTS.CO.UK
THORNE & DERRICK UK
TEL 0044 191 490 1547 FAX 0044 477 5371
TEL 0044 117 977 4647 FAX 0044 977 5582
WWW.THORNEANDDERRICK.CO.UK



BMHTO185AS3 Indoor/Outdoor Lug 95-185 mm²



Dimension Details

A	176 mm
B	32 mm
C	16.5 mm
D	50 mm
E	10 mm
F	13 mm
G	16 mm
H	41 mm
I	37.5 mm
J	6.5 mm
K	11 mm

Technical Data

Connector Type	Lug (Centre Palm)
Material Reference Number	8702601
Catalogue Number	BMHTO185AS3
Connector Material	Brass
Number of Conductor Bolts	2
AF	19 mm
Shear torque	34 Nm
Bolt Material	Brass
Palm Configuration	2 Holes + Single Slot
Hole size to suit stud diameter	12 mm
Additional sleeve to suit stud diameter	N/A mm
Slot	1
Slot Width	13 mm
Slot Length	19.5 mm
Conductor Cross Section Range	
Solid Aluminium	95-185 mm ²
Stranded Aluminium	70-150 mm ²
Stranded Copper	70-150 mm ²
Stranded Flexible Copper	N/A mm ²
Overall Length	176 mm
Diameter	32 mm
Weight (Each)	600g
Shipping Quantity (min)	10 pieces
Test Standard	IEC 61238

*Technical Information subject to change without notice.

Accessories

BMHOLDER	Connector brace for use on installation
59020	Mastic filler kit (Pack of 6 Strips)



WWW.CABLEJOINTS.CO.UK
THORNE & DERRICK UK
 TEL 0044 191 490 1547 FAX 0044 477 5371
 TEL 0044 117 977 4647 FAX 0044 977 5582
 WWW.THORNEANDDERRICK.CO.UK

