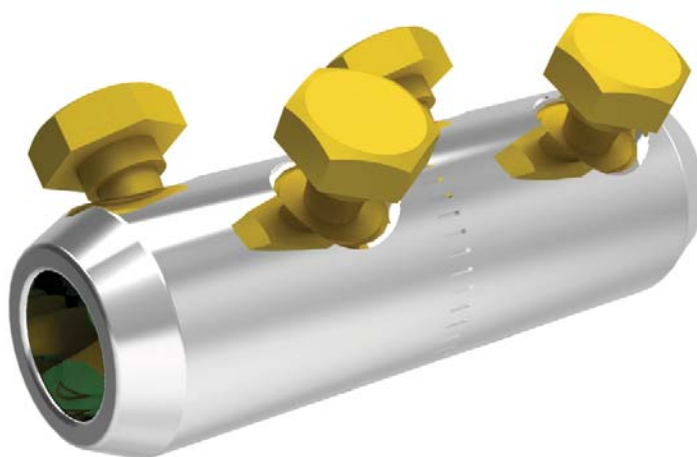


BMHC240TADWB

Solid Blocked Straight Connector
95-240 mm²



BI con™

Application

Power cables with copper & aluminium conductors.

Can be used with all jointing technologies: cold shrink, heat shrink, resin etc.

Features

Profiled bores to enhance electrical contact and increase mechanical constraint.

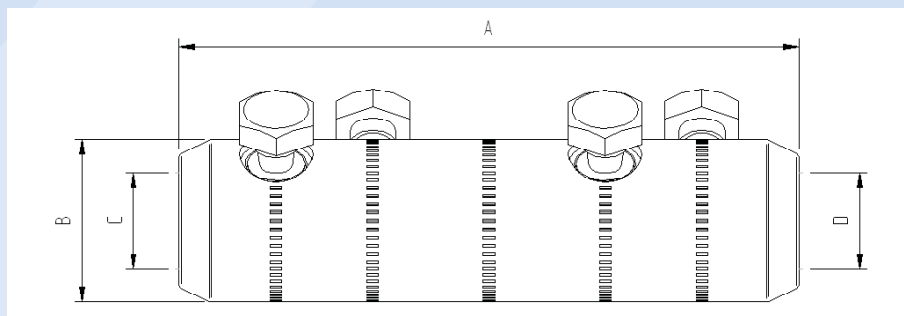
Full compliance with the **electrical** and **mechanical** requirements of IEC 61238.



WWW.CABLEJOINTS.CO.UK
THORNE & DERRICK UK
TEL 0044 191 490 1547 FAX 0044 477 5371
TEL 0044 117 977 4647 FAX 0044 977 5582
WWW.THORNEANDDERRICK.CO.UK



BMHC240TADWB Solid Blocked Straight Connector 95-240 mm²



Dimension Details

A	110 mm
B	35 mm
C	20 mm
D	20 mm

Technical Data

Connector Type	Solid Blocked Straight
Material Reference Number	87055001
Catalogue Number	BMHC240TADWB
Connector Material	Tinned Aluminium
Number of Conductor Bolts	2+2
AF	19 mm
Shear torque	35-40 Nm
Bolt Material	Brass
Central Connection Type	None
Central Connection Bolt	N/A
AF	N/A mm
Shear Torque	N/A Nm
Bolt Material	N/A
Connection Bolt Removable	N/A
AF	N/A mm
Conductor Cross Section Range	
Solid Aluminium	120-300 mm ²
Stranded Aluminium	95-240 mm ²
Stranded Copper	95-240 mm ²
Stranded Flexible Copper	N/A mm ²
Overall Length	110 mm
Diameter	35 mm
Weight (each)	375 g
Shipping Quantity (min)	20 pieces
Test Standard	IEC 61238

*Technical Information subject to change without notice.

Accessories

BMHOLDER	Connector brace for use on installation
59020	Mastic filler kit (Pack of 6 Strips)
8702302	Brass Centralising Range Extension Sleeve for 50mm ² (Str Al/Cu) to 70mm ² (SAC Al/Cu)
8702304	Brass Centralising Range Extension Sleeve for 10mm ² (Str Al/Cu) tp 35mm ² (Str Al/Cu)



WWW.CABLEJOINTS.CO.UK
THORNE & DERRICK UK
 TEL 0044 191 490 1547 FAX 0044 477 5371
 TEL 0044 117 977 4647 FAX 0044 977 5582
 WWW.THORNEANDDERRICK.CO.UK

