

Operating Instructions

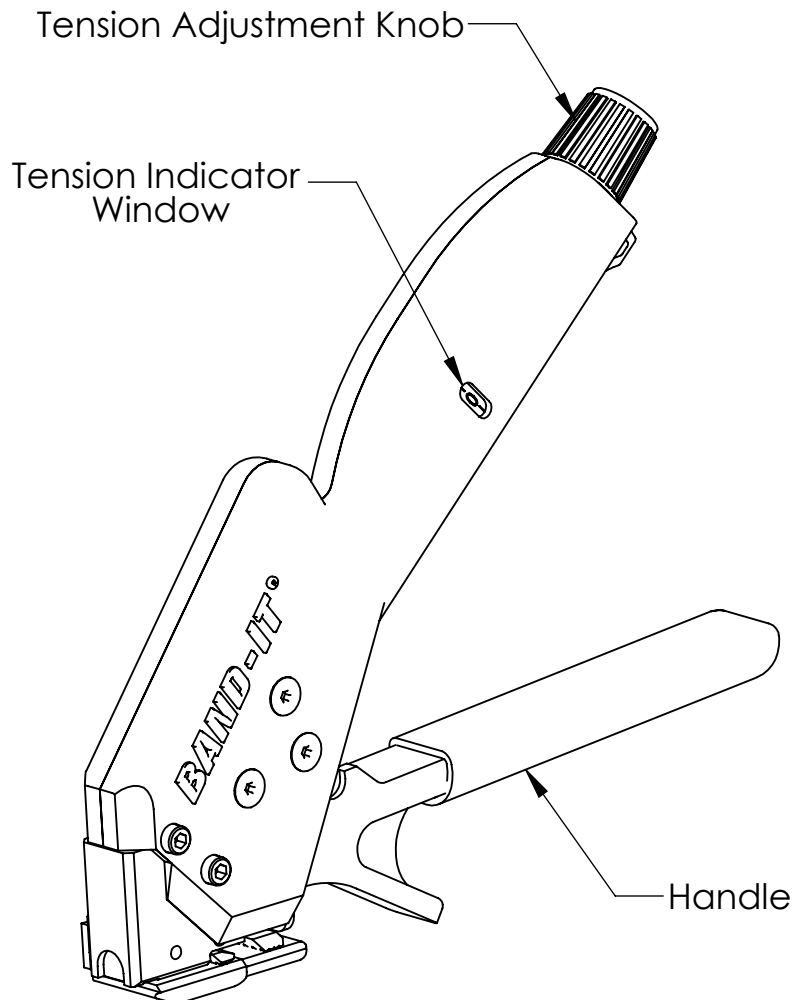
Warning:

Always wear safety glasses when operating hand tool.

Instructions:

1. Tool is designed to accept 3/16" and 5/16" wide coated and uncoated ties.
2. Turn tension adjustment knob until desired tension setting is displayed in tension indicator window. Space between the numbers counts as one-half setting. See step 7.
3. Extend handle open to release gripping mechanism and insert clamp tail into tool through side load entry.
4. Squeeze handle repeatedly to tighten band around object. Be sure to release handle completely to use full pull-up stroke of tool. Buckle must be secure against the tool head. Once the preset tension has been reached, the handle will no longer release completely.
5. To cut off excess clamp tail, squeeze handle one last time.
6. The tool must be reset by extending the handle out until it snaps into place. The tool will now be ready to apply the next clamp.
7. Tension Setting Range:

3/16" Self-Lok	1 - 4 1/2
3/16" Ball-Lok	1 - 4 1/2
5/16" Ball-Lok	1 - 6 1/2

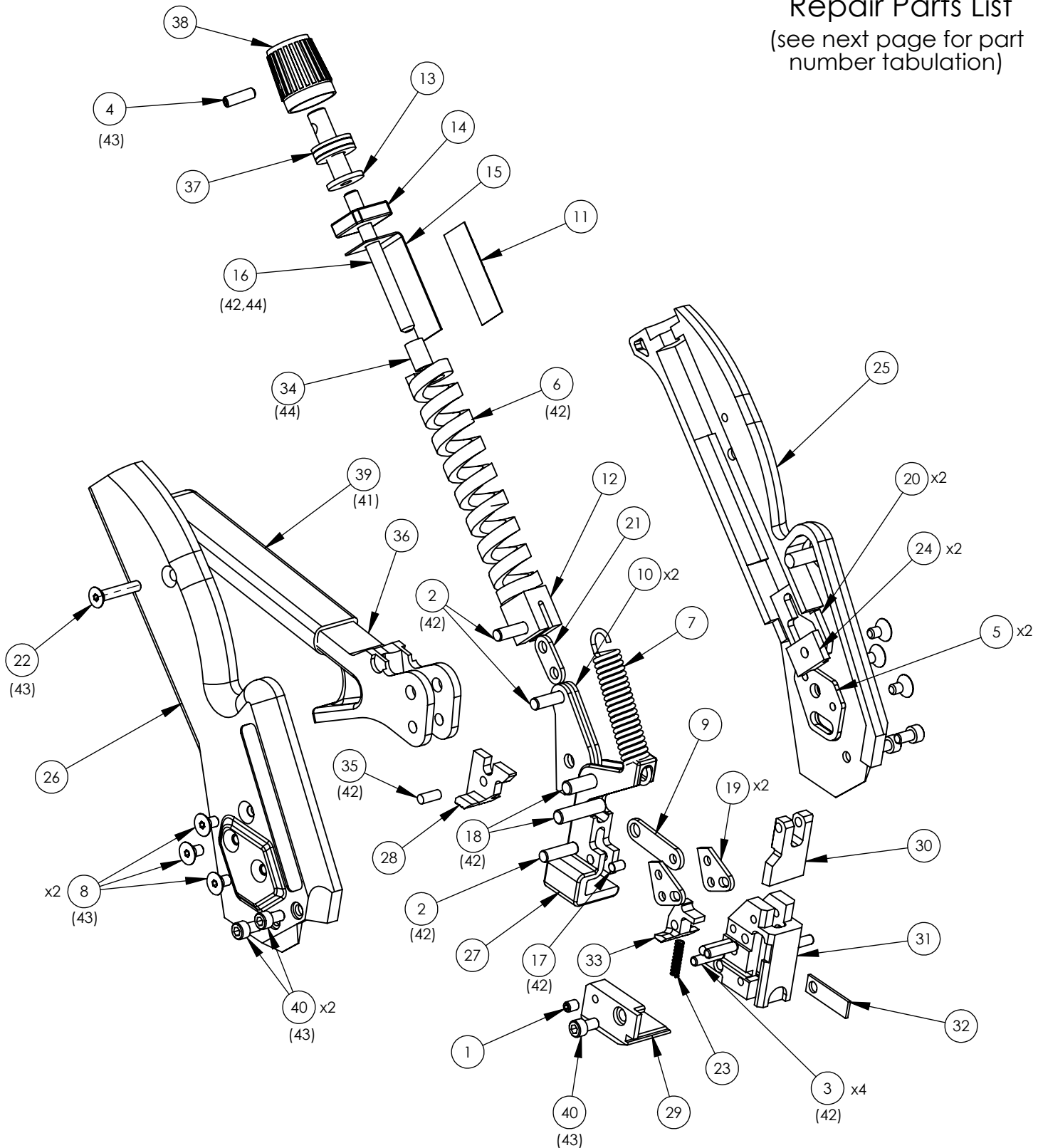


CABLE JOINTS, CABLE TERMINATIONS, CABLE GLANDS, CABLE CLEATS
 FEEDER PILLARS, FUSE LINKS, ARC FLASH, CABLE ROLLERS, OUT-OUTS

11KV 33KV CABLE JOINTS & CABLE TERMINATIONS
 FURSE EARTHING
 www.cablejoints.co.uk
 Thorne and Derrick UK
 Tel: 0044 191 490 1547 Fax 0044 191 477 5371
 Tel: 0044 117 977 4647 Fax 0044 117 977 5582



Repair Parts List
(see next page for part number tabulation)



Repair Parts List

ITEM NO.	PART NUMBER	DESCRIPTION	QTY.
1	A02887	SCREW, SET, #6-32 X .188 L	1
2	A73587	PIN, 5/32 DIA X .562 LONG	3
3	A84487	PIN, 1/8DIA X .50 LONG	4
4	A85687	SCREW, SET, #6-32 X .473 L	1
5	A91477	BODY PLATE, FRONT/SIDE LOAD TOOL	2
6	A91687	SPRING, DIE, 3.0L EXTRA HEAVY	1
7	A91787	SPRING, EXTENSION, 3/8 X 1.5" L	1
8	A91987	SCREW, FLAT, #6-32 X 1/4L	6
9	A92177	LINK, MIDDLE, CUTOFF	1
10	A92267	TENSION ARM, FRONT/SIDE LOAD TOOL	2
11	A92387	DECAL, TENSION INDICATOR	1
12	A92487	TENSION PLUNGER	1
13	A92577	TENSION CAP	1
14	A93487	BLOCK, TENSION	1
15	A93587	TENSION INDICATOR	1
16	A94488	SCREW, SET, #10-24 X 2.0 L	1
17	A94687	PIN, .125D X .19L	1
18	A94887	PIN, .188D X .78L	2
19	A94987	LINK, CUTOFF	2
20	A95387	TENSION PLATE	2
21	A95487	TENSION LINK	1
22	A96087	SCREW, FLAT, #6-32 X 3/4L	1
23	C09587	SPR, COMP, .12 DIA X .5L	1
24	K57887	PAD, CENTERING, TENSION ARM	2
25	K93487	BODY, LEFT, STANDARD	1
26	K93687	BODY, RIGHT, BLACK	1
27	K93788	PULL UP LEVER, SIDE LOAD	1
28	K93887	GRIPPER, PULLING	1
29	K93987	BLADE, LONG TAIL	1
30	K94087	KNIFE, LONG TAIL	1
31	K94187	HEAD, SIDE LOAD	1
32	K94287	KNIFE COVER	1
33	K94387	GRIPPER, HOLDING	1
34	K97387	BUSHING, TENSION STOP	1
35	K97487	PIN, .125" DIA X .313" L	1
36	K97587	HANDLE, FRONT/SIDE LOAD TOOL	1
37	M53287	BEARING, THRUST, .250 ID X .462 OD	1
38	M53387	KNOB, ADJUSTMENT, .250 SHAFT	1
39	M53887	GRIP,TEXT .437ID X 3.25 LG, BLACK	1
40	M54587	SCREW, CAP, #6-32 X .25 L	5
41	-	ADHESIVE, CYANOACRYLATE	-
42	-	GREASE, EXTREME PRESSURE	-
43	-	BLUE LOCTITE (MEDIUM STRENGTH)	-
44	-	RED LOCTITE (HIGH STRENGTH)	-



CABLE JOINTS, CABLE TERMINATIONS, CABLE GLANDS, CABLE CLEATS,
FEEDER PILLARS, FUSE LINKS, ARC FLASHY CABLE ROLLERS, CUT-OUTS
11KV 33KV CABLE JOINTS & CABLE TERMINATIONS
FUSE ASSEMBLY
www.band-it-idx.com
Thames and Derwent UK
Tel: 0044 191 490 1547 Fax: 0044 191 477 5371
Tel: 0044 117 975 4649 Fax: 0044 117 975582