

# TFJB Range

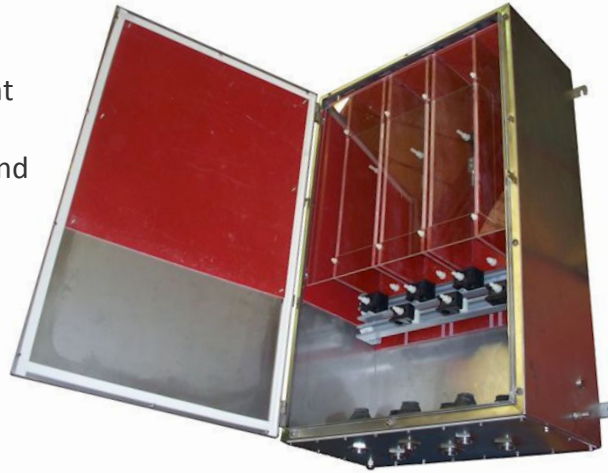


WWW.CABLEJOINTS.CO.UK  
**THORNE & DERRICK UK**  
 TEL 0044 191 490 1547 FAX 0044 477 5371  
 TEL 0044 117 977 4647 FAX 0044 977 5582

36kV

The latest in the high voltage range offering enhanced flexibility over the choice of cables, entries and cable terminations. The TFJB can accept three phase connections either straight through or bottom entry only. The unit can accommodate one\* connector per phase in and out.

- Up to 36kV in Zone 1 Areas
- Fault rated 25kA for one second
- DTS-01 deluge tested enclosure
- Heavy duty machined hinges with lift off cover pad-lockable cover



## Enclosure Ratings

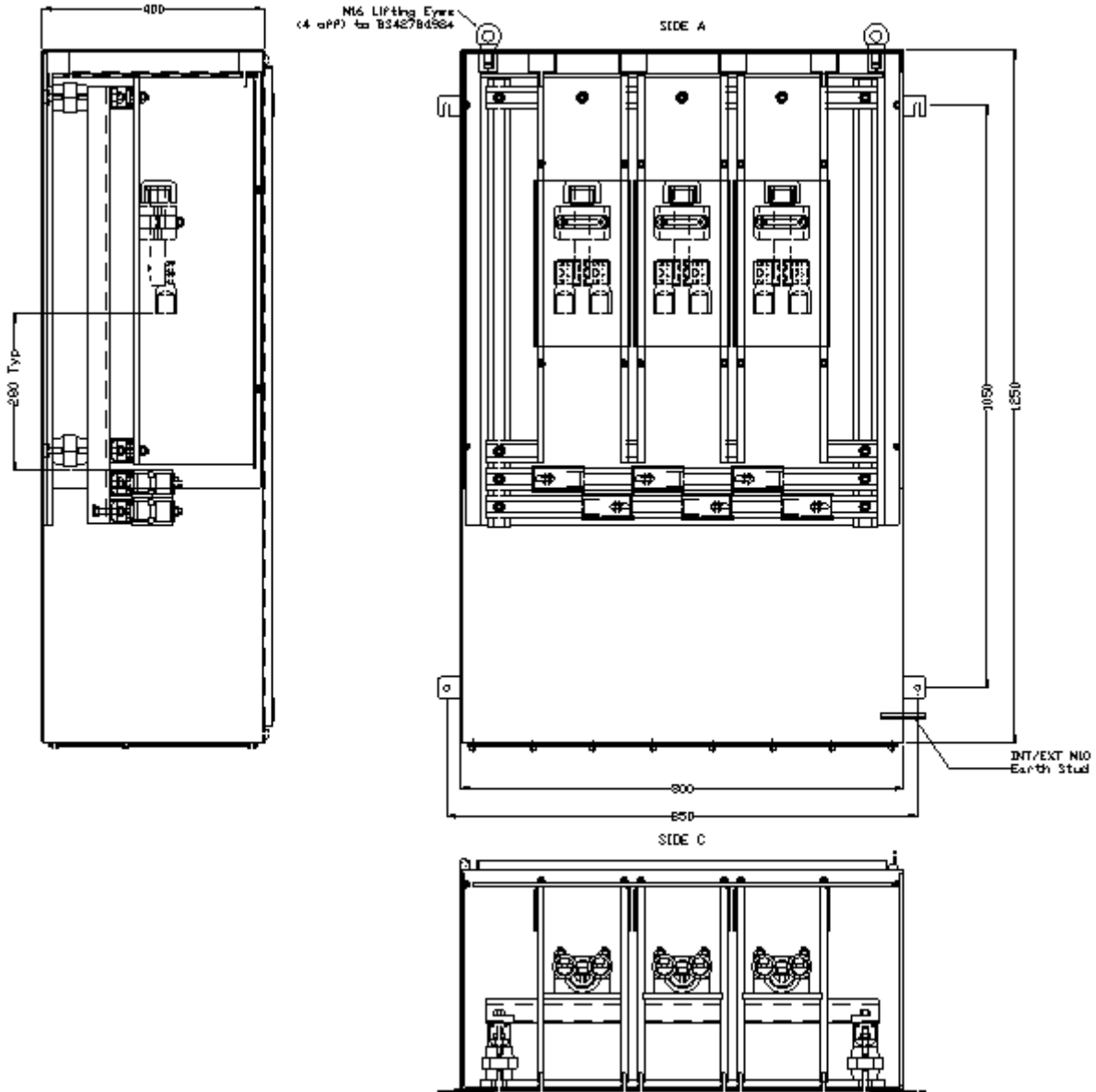
Product Reference	Width (mm)	Height (mm)	Depth (mm)	Power Rating @ T4 (W)	Maximum Voltage (kV)	Maximum Current (A)	Ambient Range	Weight (kg)
TFJB	800	1250	300	174	36	312	-20°C to +40°C	98

## Standard Specifications

Enclosure Type	High Voltage
Ingress Protection	IP66 to EN60529, Type 4X, DTS-01
Impact Resistance	>7Nm (tested above 10 Nm)
Material	2mm 316L Stainless Steel (EN 1.4404) enclosure with orbital finish, silicone gasket and captive 316 stainless steel fasteners, 3mm 316L (EN 1.4404) Stainless Steel gland plates
Maximum Terminations	1 conductor per phase in & 1 conductor per phase out
No. of Gland Plates	Dependant upon configuration
Crimp Lugs	6mm <sup>2</sup> to 630mm <sup>2</sup>
Earthing	Via studs on enclosure, door and gland plates
Mounting	Via 3mm thick external mounting straps, slotted upper strap for ease of installation
<b>Certification</b>	
Area Classification	Zone 1 & 21, Gas and Dust
Apparatus Coding	Ex II 2 GD T4 Gb, Ex tb IIIC T135°C Db
Certificate Number	Sira 09ATEX3313X

\* Represents standard configuration. Other termination arrangements may be possible, please contact sales for further information

## General Arrangement



## Options

ACH	Anti-condensation heater
EP	Electro-polished
PS	Epoxy powder coated, smooth finish (RAL colour may be specified)
PT	Epoxy powder coated, Hammer Grey
MB	Mounting boss for eye bolts

Add the required suffix to the product reference.

Example: TFJBPT = TFJB with 1 x conductors per phase top entry and 1 x conductor per phase bottom entry with Hammer Grey paint finish

## Accessories

ABDM2010SS	M20 Breather drain
ABDM2510SS	M25 Breather drain
FSM12EB	M12 Eye bolts (stainless steel)
FSM16EDB3MM	M16 Eye bolts (stainless steel)



WWW.CABLEJOINTS.CO.UK  
**THORNE & DERRICK UK**  
 TEL 0044 191 490 1547 FAX 0044 477 5371  
 TEL 0044 117 977 4647 FAX 0044 977 5582

ABDS-80 - Rev 0