

Certification and Approval

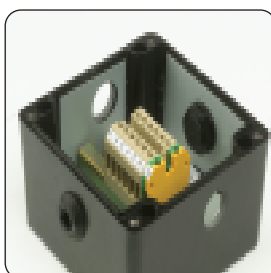
Certification Code	EEx e dm ia II 2 GD IIC T6
Certification number	PTB 00 ATEX 1002
Certification standard	EN60079-0, 1, 7, 11, 18, EN50281-1-1-1999+A1
Protection	IP66

Features

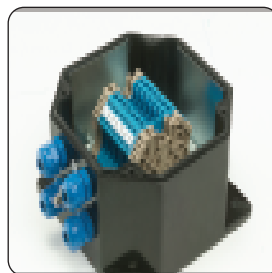
Heavy duty GRP moulding
Silicone weather seal
Graphite loaded material to minimise static build up.



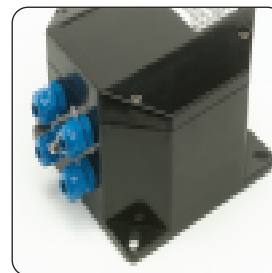
G48 and G49 Oktabox



Typical terminal
arrangement



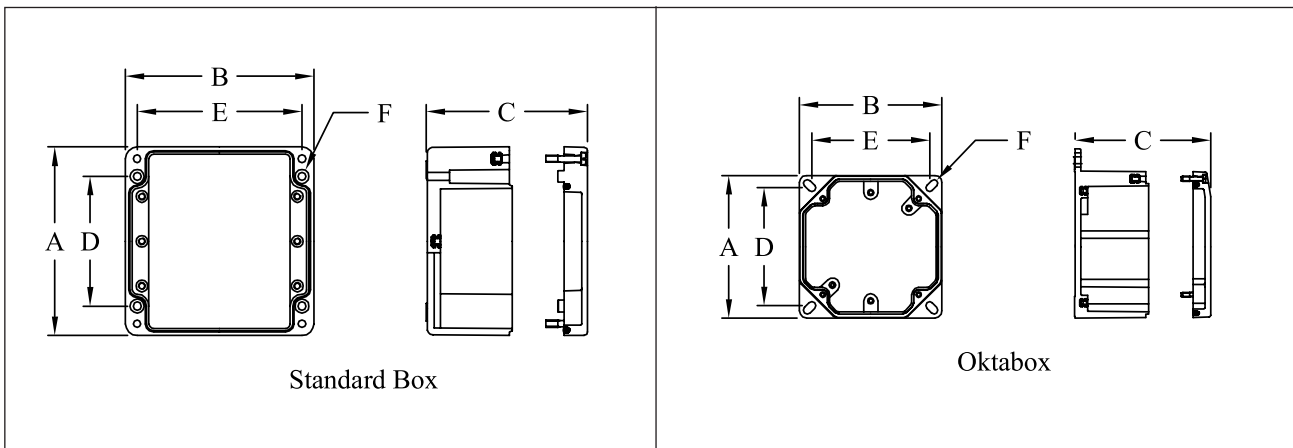
Oktabox cable entry and
terminal arrangement



Oktabox external
mounting foot

Technical Data

Voltage/Current ratings	Dependant upon Ex components fitted and conductors used
Operating Temperature	T6 -20°C to +40°C, T5 -20°C to +55°C
Terminals	2.5 up to 120 – subject to enclosure limits
Flammability	Self Extinguishing, UL 94/V Use handle and cable gland for plug 4 fixing holes on plug to handle units
Material	Glass reinforced duroplastic polyester, graphite added Halogen Free
Colour/Finish	Black as moulded
Mounting	G41 – G47 Internal fixing holes G48 & G49 External fixing holes
Features	Silicone weather seal Heavy duty GRP mouldings Graphite loaded material to minimise static build up



Standard Box						
	A	B	C	D	E	F Ø
G41	120 x 120		90	82	106	6.3
G42	160 x 160		90	110	140	6.5
G43	250 x 250		120	200	235	6.5
G44	405 x 405		120	355	388	6.5
G45	160 x 260		90	110	240	6.5
G46	160 x 360		90	110	340	6.5
G47	250 x 400		120	200	380	6.5
Oktabox						
G48	120 x 120		76	100	100	5.5
G49	160 x 160		93	140	140	5.5