

Threaded Couplings

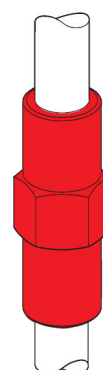
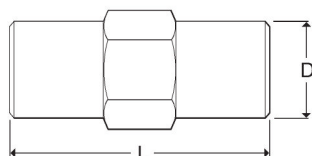
These Wallis high-strength couplings are used for joining copperbond threaded earth rods together. They facilitate deep driving and ensure continual contact between the rods both during and after installation.

The coupling also protects the earth rod threads during installation with the threaded driving head. There is a lead-in for ease of assembly and a hex on the outside for grip and keeping the coupling tight when driving into the ground.

All Wallis couplings are manufactured from a high copper content alloy ensuring excellent corrosion resistance.

Type	L mm	D mm	Unit Weight kg	Pack Quantity	Part Number
1/2"	70	20	0.07	25	ERBO 12
5/8"	70	20	0.09		ERBO 16
3/4"	80	24	0.14		ERBO 20

Material: Aluminium Bronze.

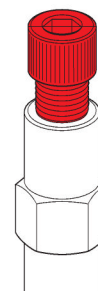
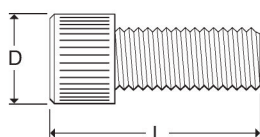


Threaded Driving Heads

These Wallis re-usable threaded driving heads are suitable for driving copperbond threaded earth rods by hand or with a power hammer. The driving head screws into the threaded coupling to allow deep driving of the earth rods.

Type	L mm	D mm	Unit Weight kg	Pack Quantity	Part Number
1/2"	50	20	0.05	25	ERBD 12
5/8"	55	22	0.08		ERBD 16
3/4"	60	25	0.13		ERBD 20

Material: Steel.



CABLE JOINTS, CABLE TERMINATIONS, CABLE GLANDS, CABLE CLEATS
FEEDER PILLARS, FUSE LINKS, ARC FLASH, CABLE ROLLERS, CUT-OUTS