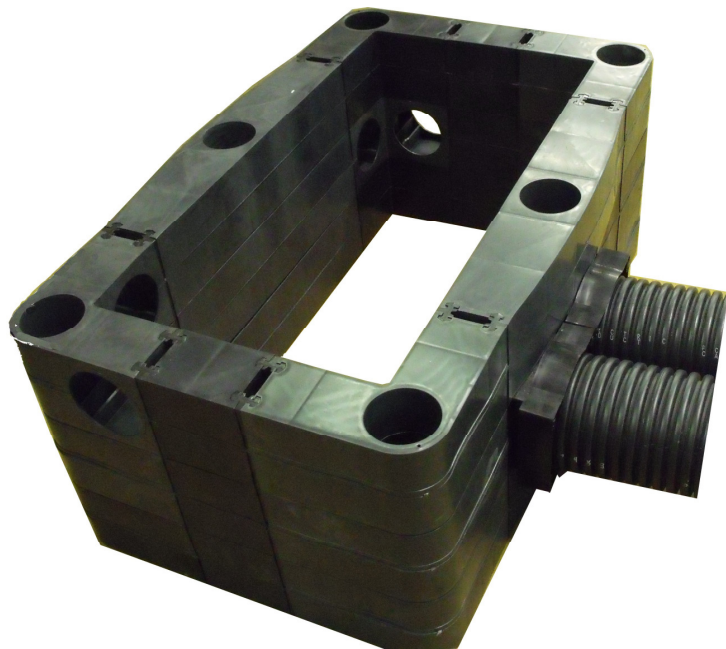


High-Strength Access Chamber

Designed to be a quick-build alternative to concrete or brick built chambers, this high strength structural chamber is manufactured from recyclable durable polypropylene. Available either flat-pack for assembly on-site or as complete ready to install chambers, the 150mm deep ring sections can simply be stacked on top of each other to the required depth to complete a totally load bearing chamber.

- **B125 & D400 Loadings**
- **Lightweight yet extremely durable**
- **Knockouts for duct entries**
- **Reduced Health & Safety and Manual Handling Risks**
- **No tools required for assembly**
- **Environmentally Friendly** – Manufactured from recyclable raw materials



Testing & Dimensions

The modular design incorporates internal support ribs which give the finished chamber its inherent strength. The chamber system has been extensively and independently tested at **Lloyds British PLC**. The tests have concluded that the chamber design surpasses both EN124 B125 and D400 requirements for vertically applied loads. Further tests were also carried out on sidewall, laterally applied loads which again showed the system to be capable of loads in excess of any current requirement.

The clear openings available match EN124 access cover and frame dimensions allowing easy pairing of correct chamber to cover. The twinwall design is 100mm thick providing a suitable bedding area for the access cover frame and subsequent transferral of loads through the chamber, in-line with Highways Agency requirements.

Clear Opening (MM)	Type	B125 Loading	D400 Loading
300 x 300		✓	✓
450 x 300		✓	✓
450 x 450	Highway MCX "Loop"	✓	✓
600 x 450	Highway MCX "C"	✓	✓
600 x 600		✓	✓
675 x 675		✓	✓
750 x 600		✓	✓
750 x 675	Highway MCX "B"	✓	✓
750 x 750		✓	✓
900 x 450		✓	✓
900 x 600		✓	✓
900 x 900		✓	✓
1200 x 675		✓	✓
1300 x 850	Highway MCX "A"	✓	✓
1500 x 750	Highway "A" (Scotland)	✓	✓

To complete any installation or project, we also supply:

- **Ductile Iron Covers/Frames**
- **Steel Covers/Frames**
- **Composite Covers/Frames**
- **Bearers & Brackets**
- **Steps**
- **Base Units with sump**
- **Security Plates**
- **Pipe Reducer Units**