

Overhead Distribution

**Fuse Service Equipment**

# Pole Mounted Cutouts

Rated at 400A

## Standard model

Our industry standard unit is a very popular model.

Designed with ease of use and simplicity in mind, this pole mountable fused cutout is the ideal method of providing rural dwellings with a safe protected and reliable Low Voltage power supply.

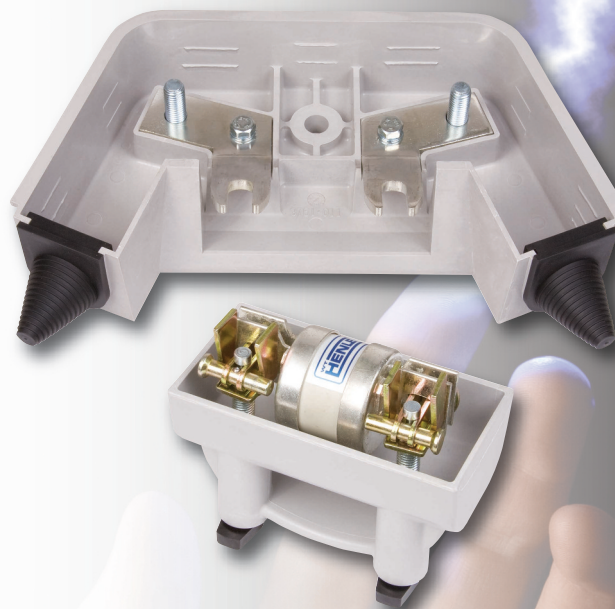
Manufactured from our own track-resistant grade of Glass Reinforced Polyester, this fused Cutout is unobtrusive in appearance, but robust for outdoor applications.

Each fused Cutout includes M12 captive studs with nuts and washers for the reception of cable sockets (lugs) up to 300mm<sup>2</sup> (compression type only) with copper or aluminium conductors.

For ease of mounting to either a wall or a wooden pole, the fused cutout is supplied with an M12 coach screw.

- Robust and tough design using our own formulation of DMC.
- Slide fit front cover for ease of jointing.
- 'Easy fit' studs accept cable sockets (lugs) up to 300mm<sup>2</sup>
- Designed to accept standard 'J' type fuselinks
- Fully compliant with the requirements of BS 7656:1993
- Fully meeting the design criteria of IP43

*Note: Fuselink not included*



## Fuselinks

This fused Cutout is designed to accommodate standard wedge 'J' type fuselinks to BS 88 with 82mm fixing centres.

Standard fuselink ratings range from 20 to 400A

## Compact model

This version can be pole, cross arm or wall mounted, its compact size allowing optimised arrangements resulting in less obtrusive installations.

Mechanical terminals with shear head bolts replace the studs usually associated with this type of cutout, eliminating the need for additional connecting lugs and specialised tools to ensure a simple, safe and effective joint.

The terminals will accept solid or stranded aluminium and solid copper conductors in the range 70 to 300mm<sup>2</sup>. An adaptor is available for 25/35mm<sup>2</sup> copper or aluminium conductors.

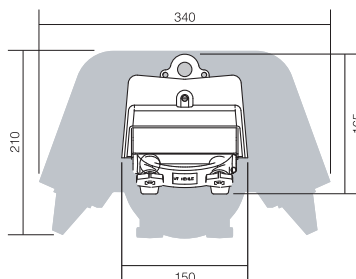
The fuse carrier accepts 'J' type fuselinks to BS88 rated up to 400A.

With the PVC cable sealing grommets in place, the cutout is IP43 rated and has been designed to fully comply with the performance requirements specified in BS7656: 1993 for LV pole mounting fuses.

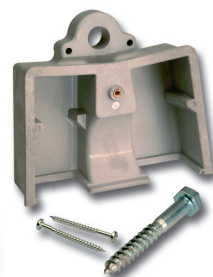
The enclosure is moulded in our own high performance, glass reinforced polyester, renowned and proven worldwide.

- Compact design for optimised mounting arrangements.
- Mechanical terminals require no additional lugs.
- Shear bolts – needs no special tools.
- Accepts aluminium and copper conductors between 70 and 300mm<sup>2</sup>
- Designed for IP43 rating and performance compliance with BS7656: 1993

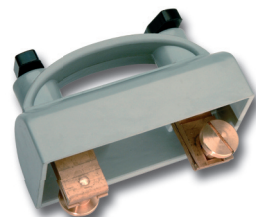
*Note: Fuselink not included*



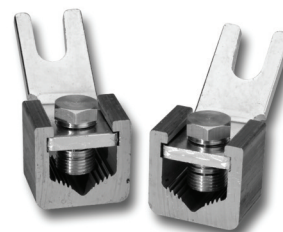
Compact size (compared with conventional products)



Coach screw (supplied) or No 8 wood screw fixing options



Spare fuse carrier (58424-06)



Spare terminal assembly kit (54614-18)

## Fuselinks

This fused Cutout is designed to accommodate standard wedge 'J' type fuselinks to BS 88 with 82mm fixing centres.

Standard fuselink ratings range from 20 to 400A



WWW.CABLEJOINTS.CO.UK  
**THORNE & DERRICK UK**  
TEL 0044 191 490 1547 FAX 0044 477 5371  
TEL 0044 117 977 4647 FAX 0044 977 5582

is the  
out prior written

14688 2014-02-01

