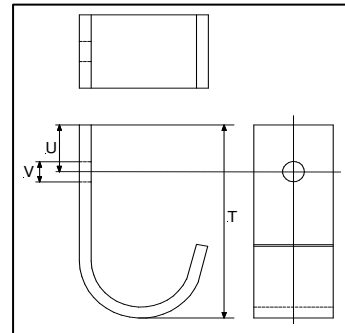




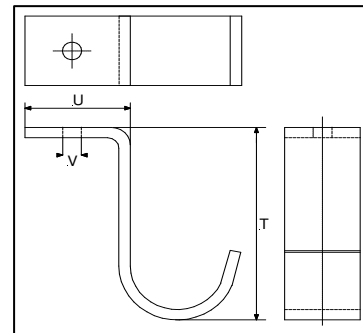
Suspension Hooks Data Sheet

Fabricated from mild steel flat bar (S275 grade Hot Rolled Structural Steel to BS EN 10025-1:2004 and BS EN 10025-2:2004). Hot dip spin galvanising to BS EN ISO1461:1999 after manufacture. Special designs are available upon request.



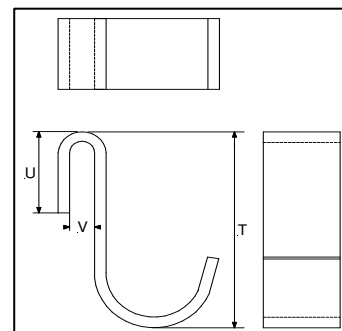
Type A

Part Number	Max Cable dia mm	Dimensions mm			Material Size		Pack Qty	Weight g	SWL kgs
		T	U	V	Width	Thickness			
SHA1	50	105	25	11	40	6	1	320	200
SHA2	75	120	25	13	50	6	1	490	250
SHA3	100	155	25	13	50	6	1	640	250



Type B

Part Number	Max Cable dia mm	Dimensions mm			Material Size		Pack Qty	Weight g	SWL kgs
		T	U	V	Width	Thickness			
SHB1	50	125	55	11	40	6	1	440	200
SHB2	75	140	60	13	50	6	1	680	250
SHB3	100	150	60	13	50	6	1	780	250



Type C

Part Number	Max Cable dia mm	Dimensions mm			Material Size		Pack Qty	Weight g	SWL kgs
		T	U	V	Width	Thickness			
SHC1	50	125	40	13	40	6	1	480	200
SHC2	75	140	45	13	50	6	1	700	250
SHC3	100	150	45	13	50	6	1	780	250



CABLE JOINTS, CABLE TERMINATIONS, CABLE GLANDS, CABLE CLEATS
FEEDER PILLARS, FUSE LINKS, ARC FLASH, CABLE ROLLERS, CUT-OUTS

11kV 33kV CABLE JOINTS & CABLE TERMINATIONS
FURZE EARTHING
www.ellispatents.co.uk
Thorne and Derrick UK
Tel 0044 117 490 1547 Fax 0044 151 477 5371
Tel 0044 117 977 4847 Fax 0044 117 977 5582