



**The UK's number 1
stainless steel enclosure
manufacturer and
passive safety experts**

Highways

British manufacturer Ritherdon design all the steel products detailed within this brochure at their factory in Darwen.

The History of Ritherdon & Co Ltd

Our company was founded by the Managing Director's great grandfather, Percy Ritherdon, in Bolton in 1895. Probably due to Percy's interests in chemistry and magic, the company initially concentrated on electro-plating, but also on making tricks for magicians: a rather unconventional range of products.

In the early 20th century, Ritherdons began to produce more sheet metalwork with "the renowned "Ritho" Steel and Non-Ferrous Products" being advertised in 1929 (electro-plating was gradually phased out through the 1980s and 90s as part of ongoing efforts to reduce our environmental impact).

We moved to our present factory in Lorne St, Darwen in 1947 and our expertise in manufacturing cabinets, control panels and other specialist sheet metalwork took off through the mid 20th century.



To mark our 100-years of Incorporation, Ritherdon & Co were awarded with a Centenary Certificate by Companies House to commemorate our Centenary year.

ENCLOSURES



A range of stainless steel cabinets ranging in size from 150mm to 1550mm wide. Internals can be specified, as well locks and colours. Aesthetically pleasing with no worries of rusting!

FEEDER PILLARS



The stainless steel feeder pillar range from 150 to 460mm wide, with integral roots and lift-off doors and with either a high quality powder coated or natural finish as standard.

PASSIVELY SAFE CABINET



The Passively Safe Cabinet was officially crash-tested to the specifications outlined in European standard EN 12767. The innovative and pioneering design of the cabinet has pushed the boundaries of possibility in terms of passive safety and passively safe products.



WWW.CABLEJOINTS.CO.UK
THORNE & DERRICK UK
TEL 0044 191 490 1547 FAX 0044 477 5371
TEL 0044 117 977 4647 FAX 0044 977 5582
WWW.THORNEANDDERRICK.CO.UK



MAC Modular Access Chambers



Orion Pole Retention Socket



FlexiPole



FlexiPost

FLEXIPOLE

FLEXIPOST

POLETECH



The Ritherdon FlexiPole is a passively safe signpost system that is tested to be impacted 1000 times at 60km/h and is designed to self-return to its original form and position time and time again.



The Ritherdon FlexiPost is a passively safe sign system that is tested to be impacted 700 times at 70km/h. Using a patented spring mechanism, the FlexiPost is designed to self-return time and time again.



Concrete traffic islands mounted on Poletech retention sockets. The islands are quick and easy to install or remove for roadworks or temporary traffic re-routing.



WWW.CABLEJOINTS.CO.UK
THORNE & DERRICK UK
 TEL 0044 191 490 1547 FAX 0044 477 5371
 TEL 0044 117 977 4647 FAX 0044 977 5582
 WWW.THORNEANDDERRICK.CO.UK



All cabinets and external enclosures are made from stainless steel for added strength, lighter and longer lasting.

Choice of materials

At Ritherdons there is a choice of 3 standard grades of stainless steel, depending on the application for the enclosure:

Grade	Alternative Names	Class of Stainless
4003	Utility grade, 3Cr12	Ferritic
304	1.4301	Austenitic
316	Marine grade, 1.4401	Austenitic

Applications	4003	304		316	
	*powder coated	powder coated / natural		powder coated / natural	
Typical urban and rural environments	✓	✓	✓	✓	✓
More corrosive, marine or certain industrial environments.		✓		✓	✓

*If left unpainted the surface of 4003 stainless steel can become discoloured in certain environments (though it's easily cleaned off, if it occurs) and so we only supply 4003 with a powder coating.

The Ritherdon range of stainless steel enclosures gives you all the following features and benefits compared with alternative products

- **Highly resistant to corrosion**

- Much longer life, giving you a lower total cost of ownership and reducing the carbon footprint of production and installation.
- Remain aesthetically pleasing - no rust.
- Removes the environmental impact of the galvanizing process.

- **Closer manufacturing tolerances**

- Better sealing against the weather and dust.
- Better-looking products.

- **Powder coated (when required)**

- A much smoother finish than with galvanized products (including a broad choice of colours to suit your local environment).

- **Thinner gauge metal possible**

- Enclosures are lighter, making for easier and safer handling during installation, while maintaining integrity after minor collisions.





- Most kept ex stock for quick delivery
- Choice of colours dark green, light and dark grey, black and anti-graffiti powder coating, or can be left natural
- WIRING - let Ritherdon take the hassle away and deliver to site a fully wired cabinet to your specification for quick installation
- EXTRAS - From heaters to cooling systems to shelves and lights, all can be added to your design
- KEYS - whatever your requirements are from a simple tri-key to high security, Ritherdon can help
- BACKBOARDS - plywood, steel or aluminium - *you choose*



WWW.CABLEJOINTS.CO.UK
THORNE & DERRICK UK
TEL 0044 191 490 1547 FAX 0044 477 5371
TEL 0044 117 977 4647 FAX 0044 977 5582
WWW.THORNEANDDERRICK.CO.UK



ENCLOSURE SELECTION MATRIX

Enclosure Type	Working Depth mm	Backboard w x h mm	Page
ER150	134	130 x 600	7
R150	134	130 x 600	7
R200 mini	84	180 x 330	7
BT Communication Pillar - small	134	180 x 400	8
BT Communication Pillar - large	134	180 x 650	8
R200	184	180 x 600	7
RH210	133	180 x 490	10
RB300 wall	133	210 x 250	12 and 13
R300	134	280 x 600	7
RH300	133	280 x 580	10
RH400	133	380 x 580	10
R460	214	440 x 600	7
RB460	213	405 x 930	12 and 13
RH500	133	470 x 580	10
RB600	283	545 x 930	12 and 13
RB800	333	745 x 930	12 and 13
RB1000	333	945 x 930	12 and 13
RB1250	383	1195 x 930	12 and 13
RB1550	383	1495 x 930	12 and 13





The Ritherdon service/feeder pillar is designed with an integral root and body and a detachable door.

To ensure a long service life the complete unit is manufactured from 2.0mm thick stainless steel and is available either in the natural stainless steel finish or with a powder coated finish.

Access for cable ducting is provided through the lower front section of the pillar and duct apertures in the sides and back of the root. An earth cable is provided for bonding the door to the body, with two M6 studs complete with nuts and washers.

The base plate is designed to provide stability during installation and protrudes at both the front and sides. To permit installation close to a wall the rear edge of the base plate is welded flush with the rear panel of the pillar body. To ensure installation at the optimum depth a suggested ground level is marked on the outer faces of the pillar.



EX STOCK –

call us on 01254 819100
for stock availability

DELIVERY –

we have our own vans to
deliver when you need them

LOCK TYPE –

should the standard tri-key
cam lock not be suitable,
please specify your lock type for
Ritherdon to source and price

COLOUR –

choice of colours dark green,
light and dark grey, black and
anti-graffiti powder coating,
or can be left natural

Feeder Pillar Dimensions

Pillar Type	Width mm	Depth mm	Overall Height mm*	Base Plate (width x depth mm)	Plywood Backboard (width x depth mm)
ER150	150	150	900	175 x 130	130 x 600
R150	150	150	1060	230 x 190	130 x 600
R200 mini	200	100	750	280 x 140	180 x 330
R200	200	200	1060	280 x 240	180 x 600
R300	300	150	1060	380 x 190	280 x 600
R460	460	230	1060	540 x 270	440 x 600

* subtract ~350 mm for burial depth to give the installed height





The communication pillar allows remote monitoring equipment to be housed and accessed by an engineer, without the need to enter the signals cabinet.

BT Communication Pillar Dimensions

	Width mm	Depth mm	Overall Height *	Base Plate mm	Plywood Backboard mm
BT PILSM	200	150	800	280 x 140	180 x 400
BT PILLRG	200	150	950	280 x 140	180 x 650

* subtract ~320 mm for burial depth to give the installed height

LOCK TYPE –

should the standard tri-key cam lock not be suitable, please specify your lock type for Ritherdon to source and price

COLOUR –

choice of colours dark green, light and dark grey, black and anti-graffiti powder coating, or can be left natural

The termination peg is normally situated next to the signal controller cabinet. The pegs are manufactured in two sizes with a modified flange for easier routing of the conduit into the base of the BT Termination Peg.

The Ritherdon BT Termination Peg is a replacement for existing corroded "Pegs" which are usually located next to the signal controller cabinets.

BT Termination Peg Dimensions

	Width mm	Depth mm	Overall Height *
Pegslim	90	50	800
Pegwide	150	50	800

* subtract ~400 mm for burial depth to give the installed height

LOCK TYPE –

tri-key fixing

COLOUR –

available in light grey

DELIVERY –

we have our own vans to deliver when you need them

EX STOCK –

call us on 01254 819100 for stock availability



WWW.CABLEJOINTS.CO.UK
THORNE & DERRICK UK
 TEL 0044 191 490 1547 FAX 0044 477 5371
 TEL 0044 117 977 4647 FAX 0044 977 5582
 WWW.THORNEANDDERRICK.CO.UK



Light box – was developed to mount a street light onto a existing wall or pole thus reducing street clutter.

The Ritherdon Light Boxes are designed to mount a street lamp, or other external lamp, onto poles or walls; being especially popular for rural and semi rural locations where existing electricity poles can be used to mount lighting.

The Standard Box has a spigot which is suitable for small to medium lanterns and the Heavy Duty Box can hold the larger lanterns. The spigots pass through the box and are welded both front and back for maximum strength.

The boxes themselves have a lift off door and can accommodate a large cut-out plus MCB enclosures. Cable access is through a 25 mm hole in the base.



COLOUR – choice of colours dark green, light and dark grey, black and anti-graffiti powder coating, or can be left natural



DELIVERY – we have our own vans to deliver when you need them



EX STOCK – call us on 01254 819100 for stock availability



LOCK TYPE – should the standard tri-key cam lock not be suitable, please specify your lock type for Ritherdon to source and price

Ritherdon Enclosures -
LIGHTER WEIGHT

Thinner gauge metal can be used because our stainless steel enclosures don't need to withstand the galvanizing process. This means that our pillars, cabinets and boxes are much easier and safer to install.

Light Box Dimensions

	Width mm	Depth mm	Height mm	Spigot Diameter mm	Spigot Length mm
Standard	170	150	400	33.4	300
Heavy Duty	170	150	400	50.0	300



WWW.CABLEJOINTS.CO.UK
THORNE & DERRICK UK
 TEL 0044 191 490 1547 FAX 0044 477 5371
 TEL 0044 117 977 4647 FAX 0044 977 5582
 WWW.THORNEANDDERRICK.CO.UK



Hinged Pillars

The door on this service or feeder pillar is flush with the body and attached with a full-length stainless steel piano hinge and has a watertight neoprene gasket.

The unit is designed and manufactured to withstand moderate forced entry. To ensure a long service life the pillars are manufactured from 2mm thick stainless steel with a powder coated finish. The standard price covers painting in one of the range of colours.

Access for cable ducting is provided through the lower front section of the pillar or the root. A length of wire provides earth bonding of the door to the body using M6 studs complete with nuts and washers.

All pillars are supplied with a full-width, external-grade plywood backboard for the fitting of electrical termination equipment. We are also able to supply and assemble any internal electrical equipment that may be required.

« **COLOUR –**
Choice of colours dark green, light and dark grey, black and anti-graffiti powder coating, or can be left natural

« **EX STOCK –**
call us on 01254 819100 for stock availability

« **DELIVERY –**
we have our own vans to deliver when you need them

« **LOCK TYPE –**
should the standard tri-key cam lock not be suitable, please specify your lock type for Ritherdon to source and price

Hinged Door Pillar Dimensions

Pillar	Width mm	Depth mm	Overall Height mm*	Base Plate	Plywood Backboard mm
RH210	210	170	1060	290 x 220	180 x 490
RH300	300	170	1060	380 x 210	280 x 580
RH400	400	170	1060	480 x 210	380 x 580
RH500	500	170	1060	580 x 240	470 x 580

* subtract ~350 mm for burial depth to give the installed height



WWW.CABLEJOINTS.CO.UK
THORNE & DERRICK UK
 TEL 0044 191 490 1547 FAX 0044 477 5371
 TEL 0044 117 977 4647 FAX 0044 977 5582
 WWW.THORNEANDDERRICK.CO.UK



Ritherdon & Co have been supplying Vaisala with a variety of cabinets in a variety of different sizes, including the RB800 and RB1250.

Vaisala highlighted the quality finish and size of our cabinets as a determining factor in choosing Ritherdon & Co to manufacture and supply their enclosures. Vaisala said:

“Vaisala Ltd selected the Ritherdon cabinet for its quality painted finish and the internal size of the enclosures chosen.”

The RB800 was selected for use on Vaisala Weather Stations on the Scottish Trunk Roads Network that were upgraded in the last year to have dual cameras with Infra-red lighting. These gave the space required to house all the equipment and of course incoming services and signal cables from instruments.”

“The RB1250 was chosen for our solar and wind-powered sites as it was large enough to house the battery bank, wind generator and solar regulator and associated extras for the dual cameras and IR lighting.”



PIPS Technology is a leader in the manufacture and supply of the most advanced automatic number plate recognition (ANPR) cameras.

Ritherdon & Co produce a bespoke, specialist cabinet for PIPS and continue to supply them on a regular basis. The cabinets we supply to Pips are designed to their exact specifications.

“Ritherdon designed a specialist cabinet for PIPS Technology with plug points and consumer units, which are used for a number of our Police ANPR installations across the UK.”



Cabinet built to customer specifications



Ritherdon & Co supply Vysionics ITS with our R620 stainless steel service cabinet to house their latest Average Speed Enforcement system.

We worked closely with Vysionics, customising our enclosure to meet their requirements. As with all Ritherdon products, we aim to be as flexible as possible to cater for your needs and offer a fully-customisable, bespoke service. Vysionics ITS said:

“We chose the Ritherdon R620 for our latest SPECS3 POD Average Speed Enforcement system because it offers us a compact and attractive enclosure ideal for installation on the urban and rural road network.”

Ritherdon has been a great partner working with us to customise their enclosure for our application, and building fully kitted production units for us.”



WWW.CABLEJOINTS.CO.UK
THORNE & DERRICK UK
TEL 0044 191 490 1547 FAX 0044 477 5371
TEL 0044 117 977 4647 FAX 0044 977 5582
WWW.THORNEANDDERRICK.CO.UK



RB Cabinet Internal Accessory Kits

The other new feature of the RB Cabinet is that the internal modular design permits the fitting of a range of extra equipment, from shelves and partitions to climate control equipment etc. This means that cabinets with extra features don't have to be specially made - reducing lead times and cost. The kits can be supplied loose, pre-installed, or ordered and retrofitted at a later date.



« **COLOUR –**
choice of colours dark green, light and dark grey, black and anti-graffiti powder coating, or can be left natural

« **EX STOCK –**
call us on 01254 819100 for stock availability

« **DELIVERY –**
we have our own vans to deliver when you need them

« **LOCK TYPE –**
should the standard tri-key cam lock not be suitable, please specify your lock type for Ritherdon to source and price



Plinth sold separately for quick installation in soft verges



Shelf kit



WWW.CABLEJOINTS.CO.UK
THORNE & DERRICK UK
TEL 0044 191 490 1547 FAX 0044 477 5371
TEL 0044 117 977 4647 FAX 0044 977 5582
WWW.THORNEANDDERRICK.CO.UK



RB Cabinet Dimensions

Cabinet	Width mm	Depth mm	Max Height mm	Plywood Backboard mm	No. of Doors
RB300 Wall Mounted	300	180	342	210 x 250	Single
RB460	460	260	1125*	405 x 930	Single
RB600	600	330	1125*	545 x 930	Single
RB800	800	380	1125*	745 x 930	Single
RB1000	1000	380	1125*	945 x 930	Single
RB1250	1250	430	1125*	1195 x 930	Double+
RB1550	1550	430	1125*	1495 x 930	Double+

* 2° slope to back of cabinet; excluding plinth height of 300 mm
 + Doors seal against each other without the need for a vertical bar, therefore saving space.

Options:

- Document pocket
- Police door
- Castellations bars
- Heaters and cooling fans
- Louvre filter kit (recommended with fan, to prevent the ingress of dust)
- Internal light kit (LED light including door-activated switch)
- Multiple backboards



11" or 19" fixed or swinging rack units



Folding cabinet



WWW.CABLEJOINTS.CO.UK
THORNE & DERRICK UK
 TEL 0044 191 490 1547 FAX 0044 477 5371
 TEL 0044 117 977 4647 FAX 0044 977 5582
 WWW.THORNEANDDERRICK.CO.UK



Passively Safe

Why choose Ritherdon?

Ritherdon are continually looking at ways to improve our highways. With this range of passive safe products, Ritherdon are not only improving the highways but making them safer.

FREE consultation service -

to help designers use the correct products, our team have been involved in schemes across Europe from design to implementation to make sure it's correct and meets the standards

FREE site survey - so from start to finish you know it's right

One stop shop - buy everything you need to allow a complete scheme to be built using one supplier

Guarantee - from a free replacement to a 10 year guarantee, we don't think any other products in the marketplace come near to Ritherdons

TESTING – TRL carried out BS EN12767 at 35 and 100 kph. Poletechs pole plug was used to make the demo live. We also tested with 26kg of weight in the cabinet to allow for different equipment to be installed inside the cabinet.



Electrical Isolation

Electrical cables pose a problem for passively safe equipment in an impact. The National Annex to BS EN 12767 demands any electrical supply is isolated in an impact to prevent apparatus becoming electrically live. Also cables must pull away and not tether the cabinet in any impact.

Ritherdon with Poletech's expertise in electrical isolation systems gained from supplying cabling systems to passively safe lighting columns and illuminated signs. The test cabinet was provided with 4 multicore cables to represent a typical cables arrangement. The cables were provided with moulded PolePlug IP 68 rated weatherproof plugs. The plugs separate at or below ground level when the cabinet is knocked forward during the impact.

Impact will also trigger a shock sensor mounted in the cabinet which then isolates the power supply at a relay safely sited away from the cabinet.



WWW.CABLEJOINTS.CO.UK
THORNE & DERRICK UK
TEL 0044 191 490 1547 FAX 0044 477 5371
TEL 0044 117 977 4647 FAX 0044 977 5582
WWW.THORNEANDDERRICK.CO.UK



Passively Safe Cabinet

Why- on high speed roads and motorways over 50 mph the chance of serious injury or death is increased when impacting roadside furniture. Passive safety over the last 5 years has grown in the UK and more locations are requiring passively safe products. One product missing was the roadside cabinet and so we developed a version with engineers and installers of roadside cabinets to meet their demands and requirements.



The car after a 100 kph crash test with the Ritherdon cabinet



The plinth and cables after the 100 kph impact (the cables and underlying cast-in foundation unit are totally undamaged but the visible plinth is designed to be replaced)



The cabinet after the 100 kph impact showing the separated "PolePlugs"

Passive Cabinet Dimensions

Cabinet	Width mm	Depth mm	Max Height mm	Plywood Backboard mm	No. of Doors
RB460	460	260	1125*	405 x 930	Single
RB600	600	330	1125*	545 x 930	Single
RB800	800	380	1125*	945 x 930	Single

COLOUR –
choice of colours dark green, light and dark grey, black and anti-graffiti powder coating, or can be left natural

EX STOCK –
call us on 01254 819100 for stock availability

DELIVERY –
we have our own vans to deliver when you need them

LOCK TYPE –
should the standard tri-key cam lock not be suitable, please specify your lock type for Ritherdon to source and price



WWW.CABLEJOINTS.CO.UK
THORNE & DERRICK UK
TEL 0044 191 490 1547 FAX 0044 477 5371
TEL 0044 117 977 4647 FAX 0044 977 5582
WWW.THORNEANDDERRICK.CO.UK

ore saving space.

The Problem...



Damaged road signs
Replacement costs
Disruption to traffic
Personal injury claims



FLEXIPOLE

Sign System is a unique system that allows a variety of

LOW-LEVEL SIGNS

to be attached to a passive safe, flexible pole (the Flexipole).



Tested to be impacted
1000 times at 60km/h

Post height:
upto 1m

Max sign size:
upto 600 diameter

Illuminated options available



5 Year Replacement
Guarantee - if pole
doesn't self return



WWW.CABLEJOINTS.CO.UK
THORNE & DERRICK UK
TEL 0044 191 490 1547 FAX 0044 477 5371
TEL 0044 117 977 4647 FAX 0044 977 5582
WWW.THORNEANDDERRICK.CO.UK

• maintenance costs • are quick

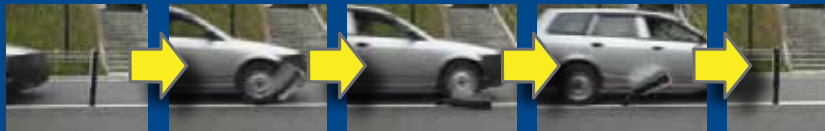
The Solution...

The Flexipost and Flexipole

"the only passively safe pole and post to reduce maintenance"

A significant proportion of road traffic accidents are as a result of collisions with signs, signals, poles and other items of street furniture which can now be made passive safe offering a real contribution in the reduction of personal injury to the occupants of vehicles involved in such accidents.

The Flexipole and Flexipost are designed to self-return to their original form and position time and time again.



FLEXIPOST

Sign System is a unique system that allows a variety of

HIGH-LEVEL SIGNS

to be attached to a passive safe, flexible post (the Flexipost).



Tested to be impacted
700 times at 70km/h

Pole height:
upto 2.8m x 50
diameter post

Max sign size -
upto 2.5m high
x 1.5m diameter

Illuminated options available

Using a patented spring mechanism, the FlexiPost is designed to self-return time-and-time again

Any sign can be attached to your requirements

See both the Flexipole and Flexipost products in action -

Demonstrations available on site at place of work.

Call 01254 819100

to book your

free demonstration today!



and easy to install • reduce the chance of personal injury



- Orion Retention Socket
- Pole Plugs (Electric Isolation Systems)
- MAC - Modular Access Chambers, Lids and Frames
- Demountable Islands



WWW.CABLEJOINTS.CO.UK
THORNE & DERRICK UK
TEL 0044 191 490 1547 FAX 0044 477 5371
TEL 0044 117 977 4647 FAX 0044 977 5582
WWW.THORNEANDDERRICK.CO.UK

Orion Pole Retention Socket

Previously street furniture columns had always been set in concrete. This is fine until they need to be replaced or moved; when the costs start mounting:

Jackhammer and excavate; replace the column; infill with concrete; repair paving slabs or surrounding surfaces; remove waste arising.

Installing poles and columns into Orion Retention Sockets completely eliminates this costly maintenance work.

Pole Replacement with Orion Socket

- | | |
|---|------------------------------------|
| 1/ Remove top plate; | 5/ Insert into socket; |
| 2/ Loosen clamping screws; | 6/ Tighten clamping screws; |
| 3/ Lift out damaged pole; | 7/ Screw down top plate; |
| 4/ Slide top plate, clamp and (new) O-ring onto new pole; | 8/ Finished in ~10 minutes. |

Pole Size Diameter	Pole Plant Depth
50, 60, 76, 89, 115, 140, 145, 168, 177, 180, 194, 200, 219	300, 450, 600 (various sizes available).

- Quick and simple installation and removal.
- Uniform clamping around pole (patent app. 2482889).
- Ideal for passively safe poles (traffic signals and lighting).
- No weak points – full strength along foundation.
- Power/data cable entry through ducted base plate or Rhino.
- Accepts tapered and polygonal columns.

“One of the reasons the Orion was chosen over its competitors units was the circular design which doesn’t look out of place and fits in with the retro design we were trying to achieve.”

Lighting Technician at East Ayrshire Council, Robert Cooper

Cable entry options

Ducted base plate –

“Rotaduct” Single elbow or twin elbow (T Joint) to loop IN & OUT to accept 100mm diameter cable duct.

Rhino bend –

Cable entry via Rhino bend on side wall of socket to match cable slot in pole, when socket depth is too deep for base plate cable entry.

Tightened Sleeve Sockets

A simpler socket designed typically to accept bollards. The pole is simply pushed into the socket and gripped by a tightening polymer sleeve. The pole/bollard can be removed with a clamp and jacking unit provided by Ritherdon & Co.



WWW.CABLEJOINTS.CO.UK
THORNE & DERRICK UK
 TEL 0044 191 490 1547 FAX 0044 477 5371
 TEL 0044 117 977 4647 FAX 0044 977 5582
 WWW.THORNEANDDERRICK.CO.UK



Installed Orion Retention Socket (Worthing)



The Pedestrian Guard Rail version is a rectangular-section polymer-sleeve socket and comes in the following sizes:

Pedestrian Guardrail Sockets (mm)

60 x 60	50 x 50
50 x 30	50 x 60

Socket Dept (mm)
 0 & 450

The PolePlug (Electric Isolation System)



The PolePlug is the safest and easiest-to-maintain wiring system for Passively Safe traffic poles. The PolePlug is also the Highways Agency approved system for passively safe poles requiring emergency disconnection of the power supply cables. Should the sign post or lighting column shear on impact, the pole is not tethered in any way by the supply cables.

With a design life of 20-years the Break-Away PolePlug is safe, reliable and waterproof to IP68, meeting all of the design requirements of the Highways Agency BS EN 12767:2007 National Annex NA.8 underground electric connections.

All PolePlug connectors have undergone rigorous testing and comply with the requirements of BSEN 60309-1, IEC 60309-1 and BSEN 60309-2 IEC 60309-2. PolePlugs are designed to have protection against foreign objects and water and conform to the requirements of IP68 to BSEN 60529.



Benefits of PolePlugs:

- Meets the requirements of BSEN 12767: 2007 including the national Annex NA.8 underground electric connections
- IP68 tested
- Eliminates risk liability due to preventable fire or electrocution.
- Eliminates possibility of fire after accident due to sparking wires
- Eliminates possibility of electrocution to accident victims, rescue personnel and pedestrians
- Eliminates damaged splices in adjoining poles
- Eliminates delayed rescue efforts attributed to exposed wire
- Eliminates repeated splicing and wire damage after knockdown
- Allows other lighting columns on the circuit to continue illumination
- Meets the Break-Away wiring requirements of the Highways Agency
- System maintenance quick and simple
- PolePlug allows proper pole trajectory during knockdown

Lineguard electrical isolation system which has zero voltage upon vehicle impact.



Used in conjunction with Ritherdon passively safe cabinet.



Poleplug female socket after vehicle impact and plug breakaway.

Pin Sizes Available	Amp Rated	Cable Length
2, 3, 5, 16 & 20	20	As required



WWW.CABLEJOINTS.CO.UK
THORNE & DERRICK UK
 TEL 0044 191 490 1547 FAX 0044 477 5371
 TEL 0044 117 977 4647 FAX 0044 977 5582
 WWW.THORNEANDDERRICK.CO.UK

The MAC (Modular Access Chamber), Lids and Frames

The MAC (Modular Access Chamber) system is an innovative, modular, flatpack cable access box, which easily converts into a Pole Box if required.

The MAC chambers for underground cable connections satisfies the requirements of the utilities industry and local authorities for cable joints to traffic signs, traffic signals and street lighting columns.



Sizes Available	Depth mm	Coms Depth mm
300 x 300	585	885
450 x 300	585	885
450 x 450	585	885
600 x 450	585	885
600 x 600	585	885

Benefits of the MACs:

- Substantial cost saving
- Multiple cable entry points
- Rigid reinforced construction
- Simple onsite erection
- Saves on storage and transport space
- Units are stackable and interlocking
- Versatile
- Cable duct access
- Access chamber or polebox
- No special equipment required
- Duct depth from 190mm



WWW.CABLEJOINTS.CO.UK
THORNE & DERRICK UK
TEL 0044 191 490 1547 FAX 0044 477 5371
TEL 0044 117 977 4647 FAX 0044 977 5582
WWW.THORNEANDDERRICK.CO.UK



Rapidly Installed Islands

The key to the Ritherdon Flexipole and Flexipost is flexibility and this is just as evident in its installation and implementation of the demountable islands.

The flexipole or post with sign attached can be built onto road island systems, delivered to site ready made and simply placed into position-reducing traffic congestion.



WWW.CABLEJOINTS.CO.UK
THORNE & DERRICK UK
TEL 0044 191 490 1547 FAX 0044 477 5371
TEL 0044 117 977 4647 FAX 0044 977 5582
WWW.THORNEANDDERRICK.CO.UK



Delivered to site with specified installation(s) ready to be installed!

- A complete working island installed in hours that can be removed in minutes if required
- Significantly reduces traffic congestion
- Substantial cost savings
- Islands can be sold separately

At any point these demountable islands can be taken away as a whole. This was necessary during the London Olympics where they had to be removed for the street processions. After the event they were simply reinstalled back into position.



Some locations where they can be found

- London marathon route
- Cycle road race route
- Triathlon route



WWW.CABLEJOINTS.CO.UK
THORNE & DERRICK UK
TEL 0044 191 490 1547 FAX 0044 477 5371
TEL 0044 117 977 4647 FAX 0044 977 5582
WWW.THORNEANDDERRICK.CO.UK



The mirror enables the bus driver to be aware of the cyclist as this is no longer a blind spot!



Benefits of the Cyclist Mirror Signal-Pole Bracket

- Provides motorists with increased visibility of approaching cyclists
- Attaches to any existing fixed traffic signal pole(s)
- 180 degree adjustment horizontally and vertically
- Potential to reduce cyclist casualties and fatalities



WWW.CABLEJOINTS.CO.UK
THORNE & DERRICK UK
TEL 0044 191 490 1547 FAX 0044 477 5371
TEL 0044 117 977 4647 FAX 0044 977 5582
WWW.THORNEANDDERRICK.CO.UK



- Installed in 5 minutes
- No excavating required
- Strong in appearance
- Soft upon impact
- Emergency vehicle friendly



Flexipole Solar bollard

- Provides guidance
- Generates cost savings since it can be installed in parks and areas where there is no power supply



WWW.CABLEJOINTS.CO.UK
THORNE & DERRICK UK
TEL 0044 191 490 1547 FAX 0044 477 5371
TEL 0044 117 977 4647 FAX 0044 977 5582
WWW.THORNEANDDERRICK.CO.UK



Ritherdon can design and manufacture bespoke products working with customers, either to improve an existing product or creating a totally new concept



Ritherdon solved all our issues and problems by designing a specific cabinet for our application and needs. Within weeks we had a cabinet ready to take our idea to the market. The team at Ritherdon have a great knowledge and experience to bring your ideas to life.

Park with Ease



WWW.CABLEJOINTS.CO.UK
THORNE & DERRICK UK
TEL 0044 191 490 1547 FAX 0044 477 5371
TEL 0044 117 977 4647 FAX 0044 977 5582
WWW.THORNEANDDERRICK.CO.UK



"The FlexiPole keep left sign has stood up to the job really well. We are still using the prototypes from the initial trial, and again we have had no issues or faults whatsoever with the product."



Ian McCracken, Route Steward for NWTRA, said:
The FlexiPoles Ritherdon have provided have

proved extremely easy to install and maintain, and in most cases have been in place, undamaged, for more than double the length of time of other company's products."



"The city council was searching for a solution that would ensure that public safety is assured while not inflicting a negative impact on historic street scenes. The FlexiPole is currently delivering this requirement and while the trial continues and is still being assessed,

the product has demonstrated that it potentially can provide a robust, low maintenance, cost effective solution to meet Westminster's needs."

Dave Franks, Service Development Manager (Public Lighting) for Westminster Council.

"Ritherdon products are excellent value for money and have given us longer life expectancies for our private networks."

Street Lighting Chief Engineer

Ritherdon and Co have produced cabinets for Motus for over 5 years. The stainless steel cabinets have allowed Motus to offer the client an alternative cabinet with added benefits.

Ritherdon have always be quick to adapt the cabinet to meet our ever changing needs in a competitive market we Motus would recommend Ritherdon as an ideal partner.



WWW.CABLEJOINTS.CO.UK
THORNE & DERRICK UK
TEL 0044 191 490 1547 FAX 0044 477 5371
TEL 0044 117 977 4647 FAX 0044 977 5582
WWW.THORNEANDDERRICK.CO.UK



WWW.CABLEJOINTS.CO.UK
THORNE & DERRICK UK
TEL 0044 191 490 1547 FAX 0044 477 5371
TEL 0044 117 977 4647 FAX 0044 977 5582
WWW.THORNEANDDERRICK.CO.UK