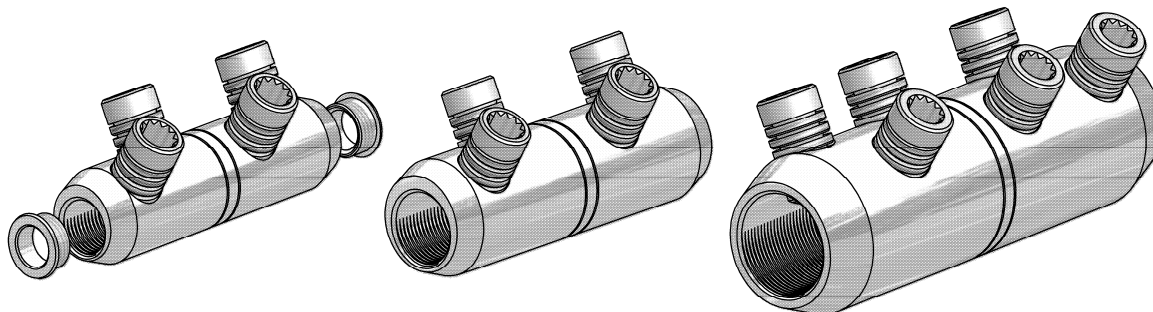


**Straight Mechanical Ferrule with  
Moisture/Contaminant Block  
for Medium/High Voltage  
Applications**

**MECHANICAL  
CONNECTORS**



## USMF Connectors (Concentric Bore)



USMF1

USMF2

USMF3

**Principle Application:** Straight jointing of circular stranded conductors for all cable voltages up to and including 46kV

**Range:**

PRODUCT REFERENCE	STRANDED CORE C.S.A. (AWG)		APPROX UNIT WEIGHT (grams)
	MIN	MAX	
USMF1*	#2 (34mm <sup>2</sup> )	250 kcmil (127mm <sup>2</sup> )	138
USMF2	4/0 (107mm <sup>2</sup> )	500 kcmil (253mm <sup>2</sup> )	194
USMF3	500 kcmil (253mm <sup>2</sup> )	1000 kcmil (507mm <sup>2</sup> )	454

The **USMF** range of concentric bore, mechanical connectors incorporate an integral moisture/contaminant block and utilise the patented universal range taking shear bolts.

The appropriate tooling is to be used at all times, typical examples shown below.



JTS/71



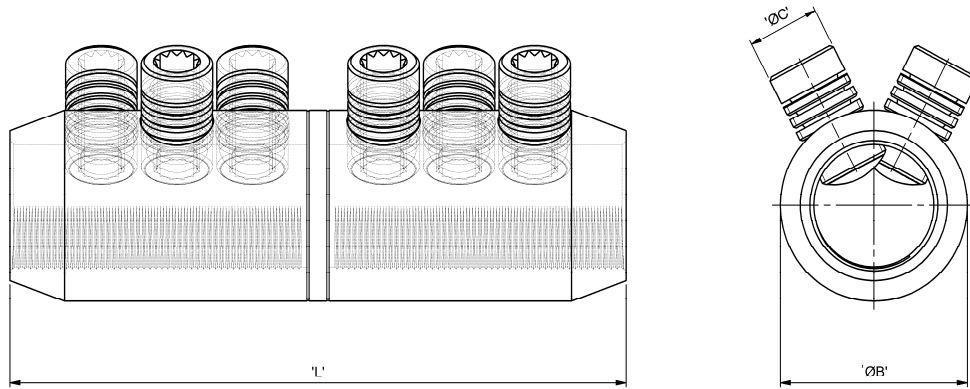
JTS/9

The connector is delivered fully assembled with conductor core stripping guides marked on the connector body.

**Straight Mechanical Ferrule with  
Moisture/Contaminant Block  
for Medium/High Voltage  
Applications**

**USMF Connectors (Concentric Bore)**

**Physical  
Dimensions:**



PRODUCT REFERENCE	DIMENSIONS (mm)		
	'L'	'ØB'	'ØC'
USMF1*	101	28	M16
USMF2	111	34	M16
USMF3	155	47	M18

**Material:** Aluminium Alloy

**Test Specification:** ANSI C119.4 Class 2 Partial Tension

**Test Report No:** TTR/271 & TTR/272

**Fitting instructions:**

1. Strip insulation from each core equal to the depth of the bore +5mm.
2. Wire brush the exposed conductor cores and wipe clean (optional).
3. Align and position the conductor cores in each of the boxes ensuring that the core is fully inserted to the centre wall.
4. Fit the universal shear screw bolts within the connector and torque tighten one turn at a time, using the correct tool, until the bolts have sheared.
5. De-burr and clean the connector as appropriate **ensuring the profile of the screws are level with the connector body and leaving no sharp edges.**

**\*IMPORTANT:** When using the USMF1 the centralising ring must be used on cable sizes #2 to 2/0 AWG, inclusive.