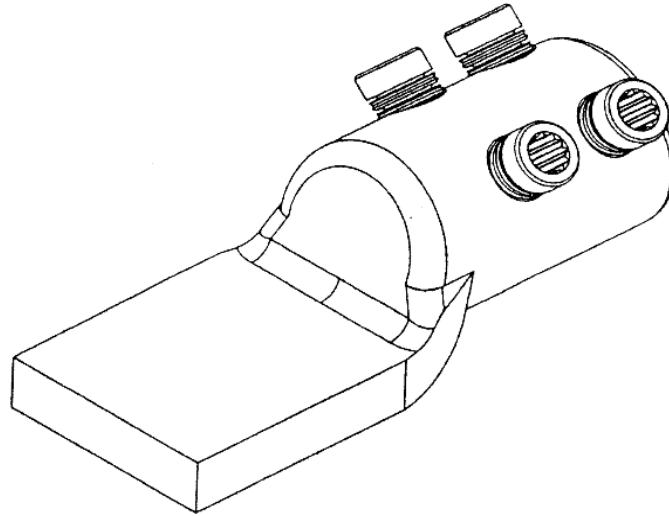


ML8 Connector**Principle Application**

Termination of solidal/stranded, aluminium/copper circular conductor cores.

Range

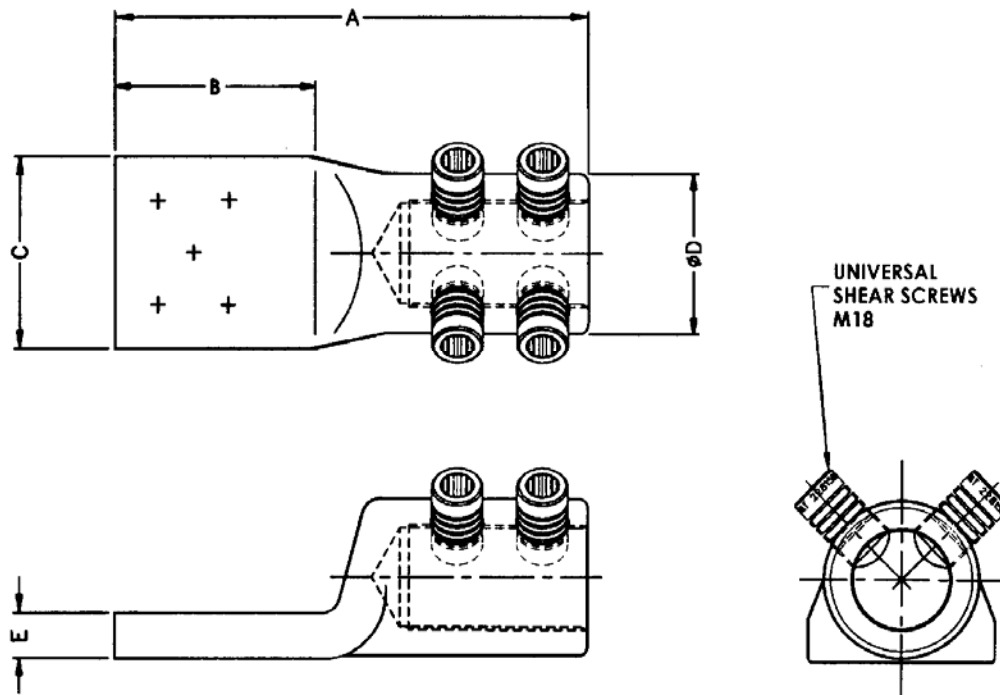
Product Reference	Core c.s.a. (mm ²)		Stud Size (mm)
	Min	Max	
ML8	800	1000	-
ML8-4 x 8			4 x M8
ML8-4 x 10			4 x M10

Note: For jointing other core configurations please contact Sicame Technical Dept

The **Hepworth ML8** mechanical lugs are manufactured from an aluminium forging, thereby providing an integral moisture block. The lugs utilise the patented 'universal' range taking shear bolts.

ML8 Connector

Physical Dimensions



Product Reference	Dimensions (mm)					Stud Size (mm)
	A	B	C	ØD	E	
ML8	186	70	63	64	16	-
ML8 - 4 x 8	166	70	65	54	16	4 x M8
ML8-4 x 10	171	55	68	64	16	4 x M10

Material

Aluminium Alloy

Fitting instructions

1. Strip insulation from each core equal to the depth of the bore guide + 5mm.
2. Thoroughly abrade exposed conductors. (See note)
3. Fully insert core within the barrel of the connector.
4. Tighten the universal bolts consecutively one turn at a time until all the heads have sheared.

Note: When joining copper conductor wrap the supplied brass gauze around the core prior to installation.