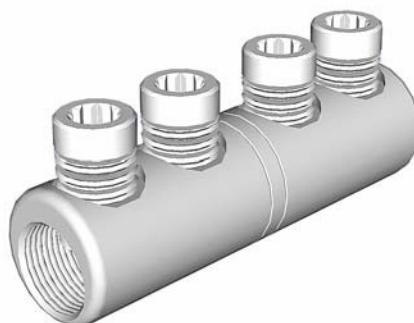


Straight mechanical ferrule with moisture / contaminant block for medium voltage applications

## MECHANICAL CONNECTORS



### MF15 Connectors



### Principle Application

Straight through jointing of stranded/solid sectoral conductors

### Range

| PRODUCT REFERENCE | CORE C.S.A. (mm <sup>2</sup> ) |           |       |     | APPROX. UNIT WEIGHT (grammes) |
|-------------------|--------------------------------|-----------|-------|-----|-------------------------------|
|                   | STRANDED                       |           | SOLID |     |                               |
|                   | MIN                            | MAX       | MIN   | MAX |                               |
| MF15/1            | 16                             | 120       | 16    | 95  | 120                           |
| MF15/2            | 16                             | 185       | 16    | 150 | 150                           |
| MF15/3            | 70                             | 300       | 70    | 240 | 220                           |
| MF15/4            | 50 (ABC)                       | 120 (ABC) | 120   | 300 | 202                           |
| MF15/5            | 50 (ABC)                       | 120 (ABC) | 70    | 240 | 220                           |

Note: For jointing other core configurations/sizes please contact Sicame Technical Dept

The MF15 range of mechanical connectors incorporate an integral moisture/contaminant block and utilises the patented "universal" range taking shear bolts. The connector comes complete with core stripping guides.

Suitable for all cable voltages upto and including 11000 volts.

### Secondary Application

Straight through jointing of stranded/solid circular cored conductors.

### Range

| PRODUCT REFERENCE | CORE C.S.A. (mm <sup>2</sup> ) |     |       |     | APPROX. UNIT WEIGHT (grammes) |
|-------------------|--------------------------------|-----|-------|-----|-------------------------------|
|                   | STRANDED                       |     | SOLID |     |                               |
|                   | MIN                            | MAX | MIN   | MAX |                               |
| MF15/1            | 16                             | 120 | 16    | 185 | 120                           |
| MF15/2            | 16                             | 185 | 16    | 300 | 150                           |
| MF15/3            | 70                             | 300 | 70    | 400 | 220                           |
| MF15/EDF          | 95                             | 240 | -     | -   | 220                           |

Note: For jointing other core configurations/sizes please contact Sicame Technical Dept

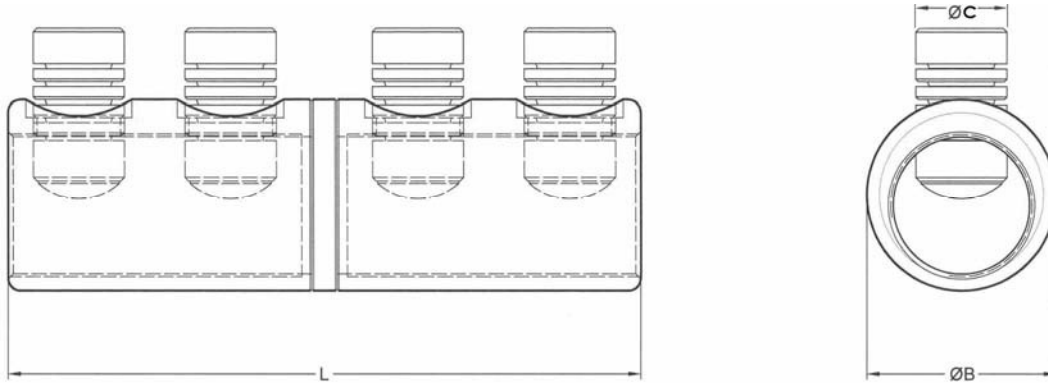
Straight mechanical ferrule with moisture / contaminant block for medium voltage applications

## MECHANICAL CONNECTORS



### MF15 Connectors

#### Physical Dimensions



| PRODUCT REFERENCE | DIMENSIONS (mm) |           |     |
|-------------------|-----------------|-----------|-----|
|                   | L               | ÆB        | ÆC  |
| MF15/1            | 107             | 28.0      | M16 |
| MF15/2            | 111             | 32.0      | M18 |
| MF15/3            | 125             | 37.5      | M18 |
| MF15/4-18         | 115             | 41.0/32.0 | M18 |
| MF15/EDF          | 105             | 32.0      | M16 |
| MF15/5            | 119             | 37.5/32.0 | M18 |

**Material:** Aluminium Alloy

#### Test Specification

Engineering Recommendation C79 / IEC 1238-1.

#### Fitting instructions

1. Strip insulation from each core equal to the depth of the bore guide + 5mm.
2. Thoroughly abrade exposed conductor cores. (See note).
3. Position the conductor cores within the connector ensuring they are fully located.
4. Fit the universal shear bolts and tighten consecutively one turn at a time until the bolts have sheared.

Note: When jointing copper conductor, wrap the core with the brass gauze supplied prior to installation.

Conductor cores 10mm<sup>2</sup> and below should be doubled to achieve the necessary cross-sectional area.

**IMPORTANT:** Please note when using the MF connectors in joints nominally rated in excess of 3.3kV, it is essential that the Jointing System Supplier's instructions for stress relieving and re-insulation techniques are strictly adhered to.