

Electrical safety

APPLICATIONS



OIL & GAS

Oil and gas industry, offshore installations, shipbuilding, heavy industry



WWW.CABLEJOINTS.CO.UK  
THORNE & DERRICK UK  
TEL 0044 191 490 1547 FAX 0044 477 5371  
TEL 0044 117 977 4647 FAX 0044 977 5582  
WWW.THORNEANDDERRICK.CO.UK





Welcome



# to the world of electrical safety



# OIL & GAS

Offshore installations, shipbuilding, heavy industry

## Your major supplier for all your electrical safety equipment needs

**CATU** was created in 1919 and, since the beginning, it has dedicated its activity to the manufacture of material and equipment for electricity networks and installations.

Since 1936, **CATU's** activity has been concentrated on equipment for personal protection against electrical hazards and accordingly, has now more than 60 years experience in this field.

After the end of World War II, many French companies involved in Production, Transmission and Distribution of Electrical Energy were amalgamated into one National Company, called "Electricité de France" (EDF).

A short time later, a central department for Safety and Prevention of Accidents was created within EDF. Because of the experience that **CATU** already had in this field, a very close cooperation was forged between EDF and **CATU** which resulted in joint development and improvement of all the important Safety Material and Equipment now used in France. The international recognition gained by EDF in this field has contributed to giving **CATU** a foremost position at the World Wide level.

At the present time, **CATU Safety Equipment**, including all the range of short-circuiting and earthing systems, the **DETEX™** voltage detectors and testers, the live working tools and the individual equipment for linesmen, is used by the Main Power Utilities, Electrical Contractors, **OIL&GAS** industry, Large Industries and Railways in about 100 countries spread over the 5 continents.

**CATU's** experience and level of investment and research is unmatched. As a member of the main national and international technical committees (such as UTE, CENELEC, IEC and ASTM), **CATU** is contributing to the development and application of the latest technologies. This quest for continuous improvement is now reinforced with the ISO 9001:2000 Quality Insurance Certification.

Our endeavours to be the Specialist in Electrical Safety Equipment are made with genuine dedication to all aspects of Safety Engineering Principles. Together with our network of distributors, we acknowledge our commitment and obligations to our customers.



N° : 1-0897



# Warning signs and delineators



## Substation Warning signs

Aluminium warning signs treated against corrosion



Ref. AM-20-GB  
(297x210 mm)



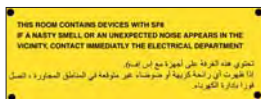
Ref. AM-20-RM  
(350x500 mm)



Ref. AP-510-BT-GB\*  
(297x210 mm)  
\*plastic



Ref. AM-7002  
(300x200 mm)



Ref. AM-215-RM  
(350x250 mm)



Ref. AM-282/2-RM  
(200x60 mm)



Ref. AM-61-GB  
(150x200 mm)



Ref. AM-61-RM  
(150x200 mm)



Ref. AM-344-GB  
(100 mm side)



Ref. AM-345-GB  
(100 mm side)



Ref. AT-41/1  
(100 mm side)  
Ref. AT-41/05  
(50 mm side)  
Ref. AT-41/025  
(25 mm side)



Ref. AT-49/1  
(100 mm side)  
Ref. AT-49/05  
(50 mm side)  
Ref. AT-49/025  
(25 mm side)



Ref. AT-54/1  
(100 mm ø)  
Ref. AT-54/05  
(50 mm ø)



Ref. AT-60/1  
(100 mm ø)  
Ref. AT-60/05  
(50 mm ø)



Ref. AT-63/1  
(100 mm ø)  
Ref. AT-63/05  
(50 mm ø)



Ref. AT-50/1  
(100 mm side)  
Ref. AT-50/05  
(50 mm side)  
Ref. AT-50/025  
(25 mm side)



Ref. AT-51/1  
(100 mm side)  
Ref. AT-51/05  
(50 mm side)  
Ref. AT-51/025  
(25 mm side)



Ref. AT-58/1  
(100 mm ø)  
Ref. AT-58/05  
(50 mm ø)



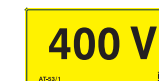
Ref. AT-61/1  
(100 mm ø)  
Ref. AT-61/05  
(50 mm ø)



Ref. AT-66/1  
(100 mm side)



Ref. AT-52/1  
(100 mm side)  
Ref. AT-52/05  
(50 mm side)



Ref. AT-53/1  
(100 mm side)  
Ref. AT-53/05  
(50 mm side)



Ref. AT-59/1  
(100 mm ø)  
Ref. AT-59/05  
(50 mm ø)



Ref. AT-62/1  
(100 mm ø)  
Ref. AT-62/05  
(50 mm ø)

## Warning earth flags



Ref. AL-60



Ref. AL-58

## Delineators



Ref. AL-62-A  
(colored ribbon  
20 m length)



Ref. AL-63-A  
(colored ribbon  
20 m length)

## Specialized warning signs



Ref. AM-42/2  
(200 mm side)



Ref. AM-33/3  
(300 mm ø)



Oil & Gas applications







## Chain delineators



Ref. **AL-31/25**  
25 m length  
Ref. **AL-31/05**  
5 m length  
Ref. **AL-32/05**  
5 m length

## Safety boundary post



Ref. **AL-316**  
0.9 m length



Ref. **AL-318**  
0.9 m length

## Safety locking badge

Ref. **AM-467-GB**  
80 mm ø



## Safety padlocks with warning signs



\* add N° of key 111 or 222  
Z : random N° of Key

Ref. **AL-230-(\*)-EX**  
Ring bow 50mm length, ø 6mm  
Ref. **AL-230-S-(\*)-EX**  
Ring bow 70mm length, ø 6mm  
Ref. **AL-230-Z-EX**  
Ring bow 50mm length, ø 6mm  
Ref. **AL-230-S-Z-EX**  
Ring bow 70mm length, ø 6mm  
Ref. **AL-240-(\*)-EX**  
Ring bow 50mm length, ø 4mm  
Ref. **AL-240-S-(\*)-EX**  
Ring bow 70mm length, ø 4mm  
Ref. **AL-240-Z-EX**  
Ring bow 50mm length, ø 4mm  
Ref. **AL-240-S-Z-EX**  
Ring bow 70mm length, ø 4mm

## Handle with 6 padlocks



Handle of moulded plastic for holding up to 6 padlocks.  
Ref. **AL-236-111-EX**  
with 6ex AL-230-111-EX  
Ref. **AL-236-S-111-EX**  
with 6ex AL-230-S-111-EX  
Ref. **AL-236-222-EX**  
with 6ex AL-230-111-EX  
Ref. **AL-236-S-111-EX**  
with 6ex AL-230-S-222-EX

## Multiple locking apparatus



Ref. **AL-200**  
Holds up to 4 padlocks

Ref. **AL-202**  
Holds up to 4 padlocks

## Handle for 10 and 30 padlocks



Ref. **AL-207/10**  
for 10 padlocks

Ref. **AL-207/30**  
for 30 padlocks

## Face shield



CE Ref. **MO-186**

Polycarbonate face shield.  
Head fit adjustment by milled wheel.  
Protection against electric arcs of short circuits.

EN 166 /EN 170

## Face shield



CE Ref. **MO-185-BL**

Panoramic face shield in non-scratch and anti-mist polycarbonate.

Chinstrap (with Velcro fastening) Head fit adjustment by milled wheel.

EN 166, EN 170, EN 50365, EN 397





# Protective equipment

## Insulating rubber gloves



CE



Insulating rubber gloves conform to international **IEC-60903** standard.

To satisfy the requirements of this standard, they are subjected to dielectrical, mechanical resistance and ageing tests.

The acceptance levels for mechanical tests are stricter.

\* References to be completed by size A, B, C, D. \*\*References to be completed by size C, D. Correspondence with standard sizes: A = 8, B = 9, C = 10, D = 11

Ref.	Class	Voltage (V)	Thickness	Weight (g)
<b>CG-02<sup>(1)</sup></b>	00	500 V	0.9 mm	220
<b>CG-05*</b>	00	500 V	0.5 mm	90
<b>CG-10*</b>	0	1000 V	1.0 mm	200
<b>CG-15**</b>	1	7500 V	1.5 mm	270
<b>CG-20**</b>	2	17000 V	2.3 mm	450
<b>CG-30**</b>	3	26500 V	2.9 mm	560
<b>CG-40**</b>	4	36000 V	3.6 mm	800

<sup>(1)</sup> cotton tised inner layer

## Insulating boots



Ref. **MV-135\***

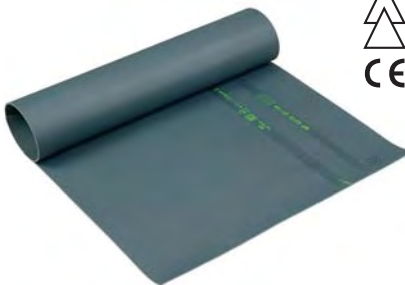
Made from elastomer canvas support, very flexible and resistant.

Anti-perforation stainless steel sole and shell.

**EN 345**

\* Add sizes: 39-40/41-42-43/44-45-46/47

## Insulating Mat



CE

The matting is manufactured of elastomer compounds with slip-resistant rubber.

High quality dielectrical rubber.

Conform to international **IEC-61111** standard.

Ref.	Tension (kV)	Thickness	Dimensions (m)
<b>MP-42/11</b>	≤26.5	3 mm	1 x 1
<b>MP-42/16</b>	≤26.5	3 mm	0,6 x 1
<b>MP-42/66</b>	≤26.5	3 mm	0,6 x 0,6
<b>MP-60/03-10</b>	≤26.5	3 mm	0,6 x 10
<b>MP-100/03-5</b>	≤26.5	3 mm	1 x 5
<b>MP-60/05-5</b>	≤26.5	5 mm	0,6 x 5
<b>MP-100/05-5</b>	≤36	5 mm	1 x 5
<b>MP-60/10-10</b>	>80	10 mm	0,6 x 10

## Working on pole kit



CE

Ref. **KIT-HAUT-02\***

**EN-358 EN-361 ( Harness only)**

Composition:

- 1 harness belt (\*size M or XL)
- 1 anti fall grip with 15m rope
- 1 tether rope with energy absorber
- 1 tether rope with tension device
- 1 constraint tie
- 1 snap hook

For full working on pole range information please contact us or consult our general catalogue on our website: [www.catuelec.com](http://www.catuelec.com).

## Bags for insulating mats



Ref. **MP-01**  
For MP-42/16 and MP-42/66  
length: 0.7m

Ref. **MP-02**  
For MP-42/11  
length: 1.1m

## Insulating stepladders



CE

A complete range with top quality features:  
Insulation between two steps: 30 000 V  
Lateral risers in polyester/fiberglass  
Aluminium alloy rungs with anti-slip coating.

**EN 131**

Ref.	Nbr.steps	Reach height
<b>MP-700-4</b>	3	0.68 m
<b>MP-700-1</b>	4	0.91 m
<b>MP-700-2</b>	5	1.14 m
<b>MP-700-3</b>	6	1.37 m

## Climbers



Ref. **MO-23**

Climbers for H profile metallic poles  
For other models:  
please consult us



**Oil & gas applications**  
Offshore installations, shipbuilding, heavy industry







# Arc flash personal electrical safety protection

In many countries regulations have been established to protect workers from electrical shock and flash hazards in specific areas within which arc flash protection is required.

## Arc flash face shield kit (10cal/cm<sup>2</sup>)

Ref. **KIT-ARC-01**

Composition of the kit:

- 1 **Face shield** with chin cup 10cal/cm<sup>2</sup>, absorbs > 99.9% of harmful UV radiation, 70% light transmission, tested to ASTM F2178 specifications
- 1 **ABS helmet** electrically insulated EN397, EN 50365, ANSI Z89.1, 20kV.
- 1 **carrying bag** for face shield and helmet



## Arc flash jacket kit (11cal/cm<sup>2</sup>)

Ref. **KIT-ARC-02**

Composition of the kit:

- 1 **Face shield** with chin cup 10cal/cm<sup>2</sup>, absorbs > 99.9% of harmful UV radiation, tested to ASTM F2178 specifications
- 1 **ABS helmet** electrically insulated EN397, EN 50365, ANSI Z89.1, 20kV.
- 1 **safety glasses** EN 166/EN 170
- 1 **arc flash protective jacket** 11cal/cm<sup>2</sup> (size XL\*), ASTM F1506 and NFPA 70E Standards
- 1 **carrying bag** for face shield and helmet
- 1 all kit **carrying bag**

*\*other sizes on request*



## Arc flash protective coverall kit (11cal/cm<sup>2</sup>)

Ref. **KIT-ARC-03**

Composition of the kit:

- 1 **Face shield** with chin cup 10cal/cm<sup>2</sup>, absorbs > 99.9% of harmful UV radiation, tested to ASTM F2178 specifications
- 1 **ABS helmet** electrically insulated EN397, EN 50365, 20kV.
- 1 **safety glasses** EN 166/EN 170
- 1 **arc flash protective hood**
- 1 **protective coverall** 11cal/cm<sup>2</sup> (size L\*), ASTM F1506 and NFPA 70E Standards
- 1 **carrying bag** for face shield and helmet
- 1 all kit **carrying bag**

*\*other sizes on request*



## Arc flash protective hood kit (40cal/cm<sup>2</sup>)

Ref. **KIT-ARC-04**

Composition of the kit:

- 1 **arc flash protective hood** 40cal/cm<sup>2</sup>, ASTM F2178 and NFPA 70E Standards
- 1 **arc flash protective coat** 40cal/cm<sup>2</sup>, (size L), ASTM F1506 and NFPA 70E Standards
- 1 **arc flash protective bib overall** 40cal/cm<sup>2</sup>, (size XL\*), ASTM F1506 and NFPA 70E Standards
- 1 **ABS helmet** electrically insulated EN397, EN 50365, ANSI Z89.1, 20kV.
- 1 **safety glasses** EN 166/EN 170
- 1 **carrying bag** for face shield and helmet
- 1 all kit **carrying bag**

*\*other sizes on request*



### Additional equipment non included in kits:

Insulating gloves for  
KIT-ARC-01, 02 and 03  
Ref. **CG-10\***  
1000 V Class 0

Insulating gloves for  
KIT-ARC-04  
Ref. **CG-20\***  
17000 V Class 2

Undergloves  
Ref. **CG-80-H**

Overgloves  
Ref. **CG-98\***

Bag for insulating gloves  
Ref. **CG-36**

*\*References to be completed by size A, B, C, D. Correspondence with standard sizes:  
A = 8, B = 9, C = 10, D = 11*



Oil & gas applications  
onshore installations, shipbuilding, heavy industry







# Live saving kits    Safety lamps

## Wall mounted saving kit



Ref. **CZ-54-R**  
**24 kV**

with instructions in english

Ref. **CZ-55-R**  
**36 kV**

with instructions in english

Ref. **CZ-54-MR**  
**24 kV**

with instructions in english/arabic

Ref. **CZ-55-MR**  
**36 kV**

with instructions in english/arabic

*In case of an electrical accident, quick response is essential: seconds gained or lost can decide the life or death of a victim.*

*Our life saving equipment is designed to make all necessary materials immediately available to rescue personnel.*

### Composition of the kit:

- 1 moulded plastic support with translucent high resistance plastic door.
- 1 rescue telescopic stick
- 1 voltage detector with flexible antenna contact (with autotest)
- 1 cable cutter with insulated handles Forged steel blades maximum opening: 30 mm
- 1 insulating platform 24 or 36 kV high voltage
- 1 insulating gloves
- 1 insulating boots
- 1 Safety instructions on the plastic door
- 1 talcum powder can.



## Compact carrying saving kit

*This compact kit is designed especially to be carried in a vehicle for safety electrical intervention (up to 24 kV).*

*Made in two part (of moulded material: PEHD), the case is also on its red part, an insulating platform.*

### Composition of the kit:

- 1 insulating platform 24 or 36 kV
- 1 telescopic insulating stick
- 1 voltage detector with autotest
- 1 rescue hook
- 1 insulated cable cutter
- 1 pair of insulating gloves
- 1 pair of insulating boots
- 1 talcum powder can
- 1 safety instructions and safety first aid posters
- 1 adhesive tape (black and yellow).



Ref. **CZ-53-R**  
**24 kV**

with instructions in english

Ref. **CZ-53-R/2**  
**36 kV**

with instructions in english

Ref. **CZ-53-MR**  
**24 kV**

with instructions in english/arabic

Ref. **CZ-53-MR/2**  
**36 kV**

with instructions in english/arabic



## Intrinsically safe torch light



Ref. **CD-103**

II 2GD EEx ibe IIC T4 or T6.  
Zone 1 et 2 - 21 et 22.

- Simple optical system.
- Power supply by 1.5 V LR20 batteries (x3).
- Bulb P13, 559 - 3.7 V - 0.3 A. Ref. **MS-115-1**
- IP 66.

Conforms to ATEX 9419 CE and EN 50014-19-20



Ref. **CD-104**

Double optical systems.  
II 2GD EEx ibe IIC T6 or T4 or T3.  
Zone 1 et 2 - 21 et 22.

Protection mode (suitable for all areas and gases).  
Appropriate certificates for Merchant Marine and VERITAS.

Power supply by 1.5 V LR20 batteries (x2).  
Fixed light or intermittent optical signals.  
IP 66/68.

Conforms to ATEX 9419 CE and EN 50014-19-20

## Intrinsically safe LED's headlamp

Ref. **MS-126**

II 2GD EEx ia IIC T4. Zone 1.

- Lighting by 3 high performance White LEDs.
- 2 lighting levels (High: 3 LEDs on or low: 1 LED on).
- Adjustable lamp height angle.
- Range: 10 to 15 meters.
- Powered by 3 batteries LR03 (AAA).
- Autonomy: 150 hours.
- Strap: cloth or silicone rubber (for helmet).
- Hooks set for helmet (non included)

Ref. **M-95864**

Conforms to ATEX 9419 CE  
and EN 50014-19-20



**Oil & gas applications**  
Offshore installations, shipbuilding, heavy industry





# Electrical maintenance equipment

## Low voltage complete set

Composition of the kit:

### Personnel equipment

MO-11001	1 safety glasses
CG-98	1 working gloves

### Voltage detector

MS-911-EX	1 voltage multiterster
-----------	------------------------

### Insulating equipment

CG-05-B	1 rubber gloves size B
CG-36	1 carrying bag for rubber gloves
MP-42/16	1 insulating mat
MP-26-A	10 insulating caps
MP-35/12	1 insulating blanket
MP-39	10 wood clamps for insulating blanket
MP-32/15	6 line protectors
MP-19	5 insulated adhesive tapes

### Insulated tools

MO-61001	1 stripping knife	MO-69003	1 adjustable spanner 250 mm	MO-65205	1 flat blade screwdriver 4 x 100
MO-67502	1 cable cutter 230 mm	MO-66002	1 universal pliers 180 mm	MO-65207	1 flat blade screwdriver 6,5 x 150
MO-68008/19	1 open end spanners set	MO-66202	1 round nose pliers 160 mm	MO-65209	1 flat blade screwdriver 8 x 175
MO-69903	1 right angle hexagonal key wrench 3 mm	MO-66502	1 water pump pliers 250 mm	MO-65232	1 Phillips screwdriver n° 1
MO-69904	1 right angle hexagonal key wrench 4 mm	MO-67102	1 side cutter 160 mm	MO-65234	1 Phillips screwdriver n° 2
MO-69906	1 right angle hexagonal key wrench 6 mm	MO-69308/23	1 sockets 3/8" wrench set	MO-65236	1 Phillips screwdriver n° 3
MO-751	1 insulating folding rule				

## Low Voltage Intervention Kit

MO-11001	1 safety glasses	M-87370	1 Tool bag
CG-02-C	1 insulating gloves	MO-65204	1 flat blade screwdriver 3.5 x 100
AL-230	1 safety padlock	MO-65206	1 flat blade screwdriver 5.5 x 150
MO-66002	1 universal pliers 180 mm	MO-65209	1 flat blade screwdriver 8 x 175
MO-66502	1 water pump pliers 250 mm	MO-65242	1 Pozidriv screwdriver n° 1
MO-67302	1 End stripping pliers 160 mm	MO-65244	1 Pozidriv screwdriver n° 2
MO-66402	1 Bent snipe pliers 160mm	MO-65236	1 Pozidriv screwdriver n° 3
MO-67500	1 Cable cutter 170 mm		

Ref. **MO-510-03-EX**

Tool bag not included



Ref. **MO-38510**



## Safety shunt

Ref. **MC-132/07**

With 0.7m of cable

Ref. **MC-132/20**

With 2m of cable



Safety shunt with two insulated clamps in anti-spark alloy and copper cable 35 mm<sup>2</sup> under transparent flexible sheath.

Delivered in plastic case.

## Earthing systems for vehicles

Ref. **TR-18**

Fitted boundary earthing plug for vehicle earthing cable.



Ref. **MC-130**

Earthing clamp, capacity: ø 18 to 38 mm.



## Earthing clip

Ref. **COL- 8/32**

capacity: ø 8 to 32 mm from 2.5 to 6 mm<sup>2</sup>

Ref. **COL- 32/100**

capacity: ø 32 to 100 mm from 2.5 to 16 mm<sup>2</sup>

Interconnects to earth every metallic part of installations.



Oil & gas applications  
Offshore installations, shipbuilding, heavy industry







# Electrical maintenance equipment

## Substation equipment (medium voltage)



### Voltage detector



Ref. **CC-365-(\*)-HBL-(\*\*)**

The DETEX voltage detector HBL is designed to offer users maximum safety on **MV installations with explosive atmosphere**.

Voltage presence is indicated by both:

- extremely bright red flashing LED's
- powerful rated audible signal > 60 dB/2 m.

High reliability

Tropicalized: -25 / +55 °C.

- housing made from polycarbonate with high mechanical properties and dielectric strength.

\*\*End fitting C or K, recommends stick: CE-4-21

\*Range of voltage **3/10 kV, 10/30 kV, 30/45 kV**

### Two pole phase comparator



Ref. **CL-8-36**

Detect differences in voltage between any two points of an installation indicated by LED's. It also enables assessment of the order of magnitude of the residual voltage induced by nearby live lines or circuits, and thus differentiates it from the one provided directly from a high voltage source.

Range of voltage: **2/36 kV**

### Short circuiting and earthing systems



Installation on permanent fixed points IEC-61230/EN-61230



Installation on bare conductors IEC-61230/EN-61230

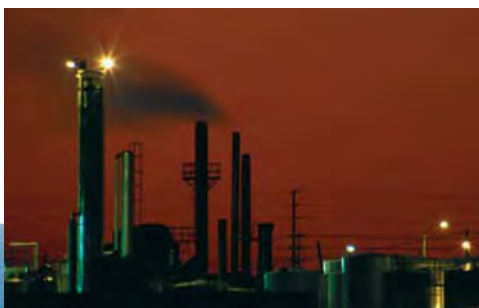


Ref.	<b>MT-1910</b>	<b>MT-1920</b>
Icc (kA/1s)	20	30
Installation on fixed points	Ø 20 mm MT-2951 range	Ø 25 mm MT-3951 range
Composition	3 clamps MT-1911-E 1 MT-1911	3 clamps MT-1921-E 1 MT-1921
Connection set	3 cables 95 mm <sup>2</sup> 1 earth cable 35 mm <sup>2</sup>	3 cables 150 mm <sup>2</sup> 1 earth cable 50 mm <sup>2</sup>

Recommended stick to be ordered separately: **CF-5-40-E**

Ref.	Icc (kA/1s)	Conductors (mm)	Composition set	Connection
<b>MT-5805</b>	20	<ul style="list-style-type: none"> <li>• Ø 5-35</li> <li>— 16-40</li> <li>— 5-40</li> </ul>	3 clamps MT-815-C 1 MT-840/1	3 cables 95 mm <sup>2</sup> 1 earth cable 35 mm <sup>2</sup>
<b>MT-8408</b>	14.5	<ul style="list-style-type: none"> <li>• Ø 18-33</li> </ul>	3 clamps MT-815-C 1 MT-840/1	3 cables 70 mm <sup>2</sup> 1 earth cable 35 mm <sup>2</sup>
<b>MT-9801</b>	10	<ul style="list-style-type: none"> <li>• Ø 5-16</li> <li>— 0-16</li> <li>! 40 x 16</li> <li>• Ø 5-28</li> </ul>	3 clamps MT-817-C 3 clamps MT-814/2-C 1 MT-840/1	3 cables 50 mm <sup>2</sup> 1 earth cable 25 mm <sup>2</sup>

Recommended stick to be ordered separately: **CF-4-21-C**  
For other configurations please consult us.







# Electrical maintenance equipment



## Fixed points for flat conductors on MV substation

Ref. **MT-2951/1**

Ref. **MT-3951**

Ref. **MT-2951/35**



Reference	Sphere dimension	Weight (g)	Fixing
<b>MT-2951</b>	Ø 20 mm	130	Thread: M 12
<b>MT-2951/1</b>	Ø 20 mm	180	Bolt: M 12 - L = 35 mm
<b>MT-2951/2</b>	Ø 20 mm	200	Bolt: M 12 - L = 45 mm
<b>MT-2950/35</b>	Ø 20 mm	247	Bolt: M 12 - L = 35 mm
<b>MT-3951</b>	Ø 25 mm	240	Thread: M 12
<b>MT-3952</b>	Ø 25 mm	240	Thread: M 16
<b>MT-3951/1</b>	Ø 25 mm	300	Bolt: M 12 - L = 45 mm
<b>MT-3952/1</b>	Ø 25 mm	350	Bolt: M 16 - L = 45 mm
<b>MT-3950/35</b>	Ø 25 mm	300	Bolt: M 16 - L = 35 mm

## Overhead line equipment (medium voltage)

### IEC electronic voltage detector

IEC 61243-1

Ref. **CC-875-10/36\***

range: 10 - 36 kV

Ref. **CC-875-11/33\***

range: 11 - 33 kV



Compact and light it offers:

- a wide band: **10/36 kV**
- a universal application (50/60 Hz)
- Characteristics:
- Detectors have unitary adjustment and are checked by routine test
- Dielectrically tested on substation bars (bridging test)
- Precise and stable operating threshold
- Reduced sensitivity to induced voltages
- Reduced sensitivity to interference field
- High environmental resistance (impacts, vibrations, moisture)

Use from **50 to 60 Hz**

Temperature conditions: class N (IEC-61243-1 standard).

Storage and operation: -25/+55 °C

Robust housing.

Power supply: 1 x 9 V alkaline battery type 6LR61

Weight: 1.1 kg size: 340 x 275 x 83 mm

Recommended stick: CE-4-21\*

\* specify type of mounting when ordering (C or K)

### Overhead line short circuiting and earthing system



IEC 61230



**MT-613** clamps are automatic contact clamps. They are put into position from above the conductor, using the clamp dispenser head



### Single pole phase comparators

IEC 61481



Ref. **CL-7-10/36**

range: 12 - 36 kV



Range of voltage (kV): **12-36**

Length of antenna (m): 1.20

Frequency and voltage phase memory.

Integrated TEST push-button.

Powered by a LF 22 9 V battery.

Delivered in carrying case.

Reference	Rating	Equipment composition
<b>MT-6613</b>	8 kA/1s	<ul style="list-style-type: none"> <li>- 3 automatic contact clamps MT-613</li> <li>- Connection cables 35 mm<sup>2</sup>, max. gap between clamps: 2.75 m</li> <li>- 1 clamp dispenser head MT-635/1-C</li> <li>- 1 spool with earthing cable connection MT-640-S</li> <li>- 1 carrying bag M-87295</li> </ul>
<b>MT-6613/1</b>	25 kA/0.5s	<ul style="list-style-type: none"> <li>- 3 automatic contact clamps MT-613</li> <li>- Connection cables 95 mm<sup>2</sup>, max. gap between clamps: 2.75 m</li> <li>- 1 clamp dispenser head MT-635/1-C</li> <li>- 1 earthing cable connection 15 x 35 mm<sup>2</sup></li> <li>- 1 earthing clamp MT-840/1</li> <li>- 1 carrying bag M-87295</li> </ul>







## Services

### After sale service



#### Repairs under guarantee

Guaranteed repairs, parts and labour, within the limit of the CATU guarantee terms and conditions specified for the products.

#### Audit of your inventory

- General recommendations
- Preventive reminders
- Repairs on quotations

#### Routine Maintenance, Calibration, Retrofit

Operations made in accordance with a quotation after examination of the equipment.

#### Logistics in association with our appointed distributor in your country

- Collection and delivery of your equipment
- Rental of equipment

### Training & technical assistance



#### Training

Training modules on site or at our premises is provided on the following program:

- the electrical risk,
- IEC and the "golden rules"
- Voltage detection
- LV, MV and HV earthing and short-circuiting
- Safety equipment for transformers and substations.

#### Technical assistance

- Recommendation on the use of our products
- Assistance with specification and choice of products according to the application need
- Help with preparation of the technical specifications

### Flexible workshop



#### Specially manufactured items

Quotations in accordance with feasibility.

#### Rush delivery

- According to the specificity of the product and on estimate
- With a guarantee of rapidity.



WWW.CABLEJOINTS.CO.UK  
THORNE & DERRICK UK  
TEL 0044 191 490 1547 FAX 0044 477 5371  
TEL 0044 117 977 4647 FAX 0044 977 5582  
WWW.THORNEANDDERRICK.CO.UK

## Just contact us!

Oil & gas applications  
Offshore installations, shipbuilding, heavy industry





[www.catuelec.com](http://www.catuelec.com)



**CATU<sup>TM</sup>**



[WWW.CABLEJOINTS.CO.UK](http://WWW.CABLEJOINTS.CO.UK)  
THORNE & DERRICK UK  
TEL 0044 191 490 1547 FAX 0044 477 5371  
TEL 0044 117 977 4647 FAX 0044 977 5582  
[WWW.THORNEANDDERRICK.CO.UK](http://WWW.THORNEANDDERRICK.CO.UK)